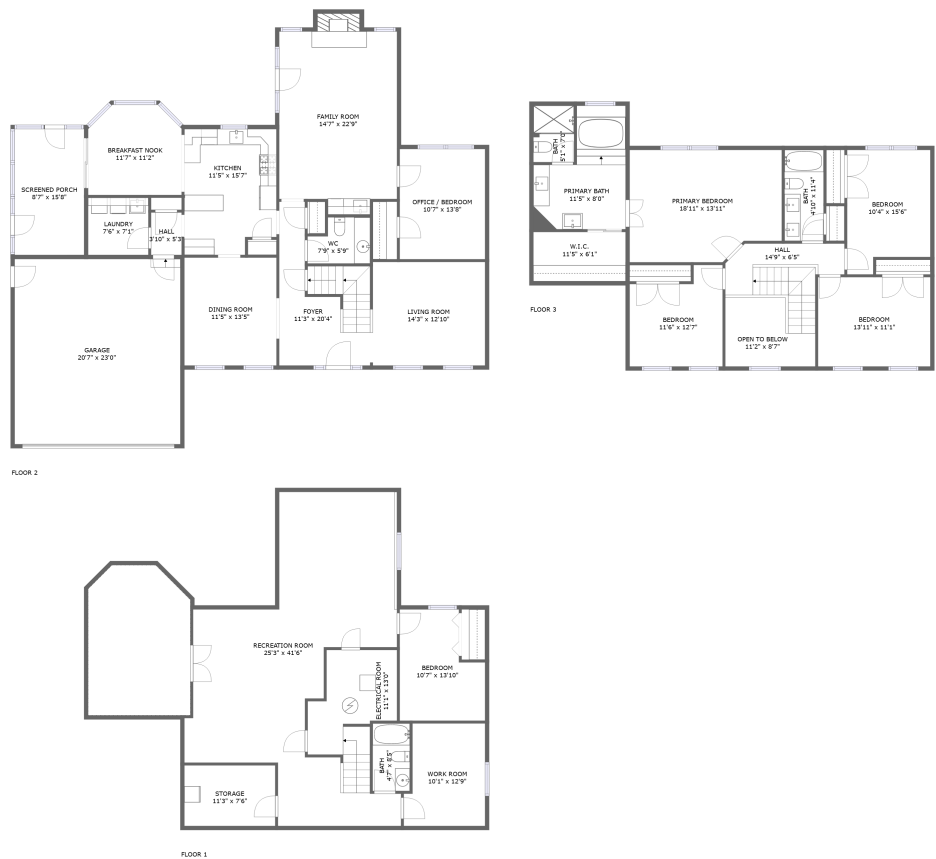


Home report

941 Stanton Street, Batavia, Kane County, Illinois, United States, 60510



**Total Area: 3537 sq. ft**

Below Ground: 890 sq. ft, Floor 2: 1463 sq. ft, Floor 3: 1184 sq. ft

Excluded: Work Room 119 sq. ft, Storage 85 sq. ft, Low Ceiling 223 sq. ft, Room Electrical 115 sq. ft, Garage 473 sq. ft, Outdoor Porch Screen 135 sq. ft, Fireplace 14 sq. ft, Opentobelow 79 sq. ft, Walls: 309 sq. ft

Property summary

**3**  
Floors

**6**  
Bedrooms

**3**  
Bathrooms

Home report

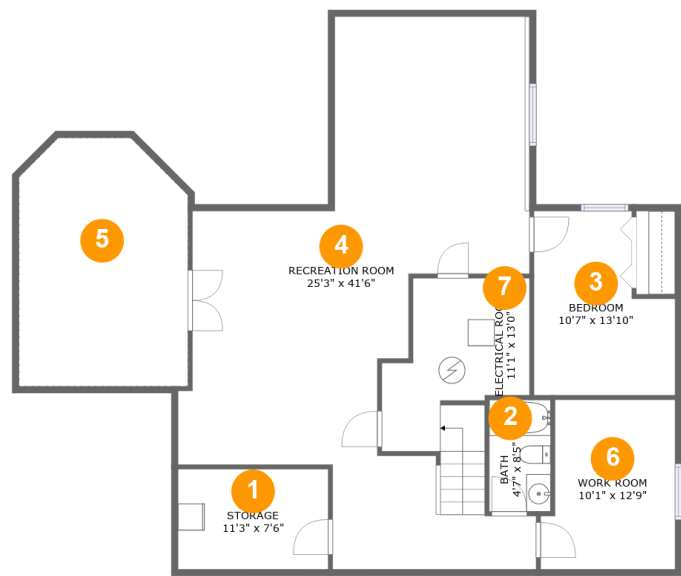
941 Stanton Street, Batavia, Kane County, Illinois, United States,  
60510

 **1**  
Half baths

 **1**  
Garages

Home report

941 Stanton Street, Batavia, Kane County, Illinois, United States, 60510



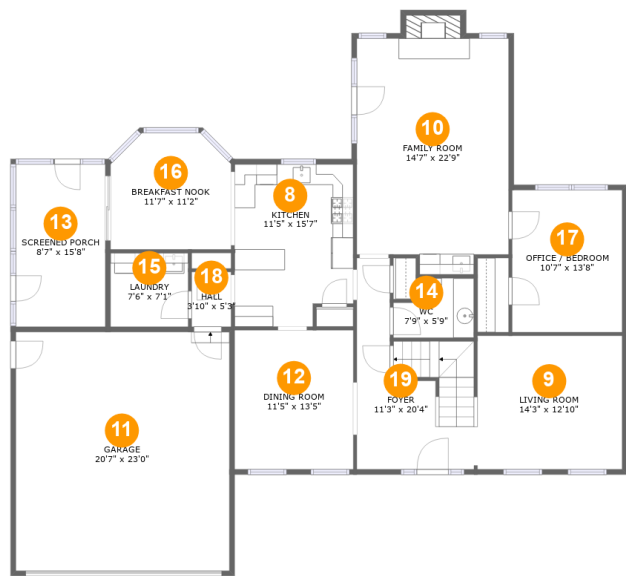
Room dimensions

Floor 1 Below ground Total:890sqft Excluded: 542sqft

#		Max Dimensions	sqft	Included
1	Storage	11'3" x 7'6"	85 sq. ft	No
2	Bath	4'7" x 8'5"	39 sq. ft	Yes
3	Bedroom	10'7" x 13'10"	125 sq. ft	Yes
4	Recreation Room	25'3" x 41'6"	664 sq. ft	Yes
5	Crawl Space	12'8" x 18'8"	223 sq. ft	No
6	Work Room	10'1" x 12'9"	119 sq. ft	No
7	Electrical Room	11'1" x 13'0"	114 sq. ft	No

Home report

941 Stanton Street, Batavia, Kane County, Illinois, United States, 60510



Room dimensions

Floor 2 Total:1463sqft Excluded: 622sqft

#		Max Dimensions	sqft	Included
8	Kitchen	11'5" x 15'7"	170 sq. ft	Yes
9	Living Room	14'3" x 12'10"	182 sq. ft	Yes
10	Family Room	14'7" x 22'9"	326 sq. ft	Yes
11	Garage	20'7" x 23'0"	473 sq. ft	No
12	Dining Room	11'5" x 13'5"	153 sq. ft	Yes
13	Screened Porch	8'7" x 15'8"	135 sq. ft	No
14	WC	7'9" x 5'9"	39 sq. ft	Yes
15	Laundry	7'6" x 7'1"	53 sq. ft	Yes
16	Breakfast Nook	11'7" x 11'2"	121 sq. ft	Yes
17	Office / Bedroom	10'7" x 13'8"	145 sq. ft	Yes
18	Hall	3'10" x 5'3"	20 sq. ft	Yes

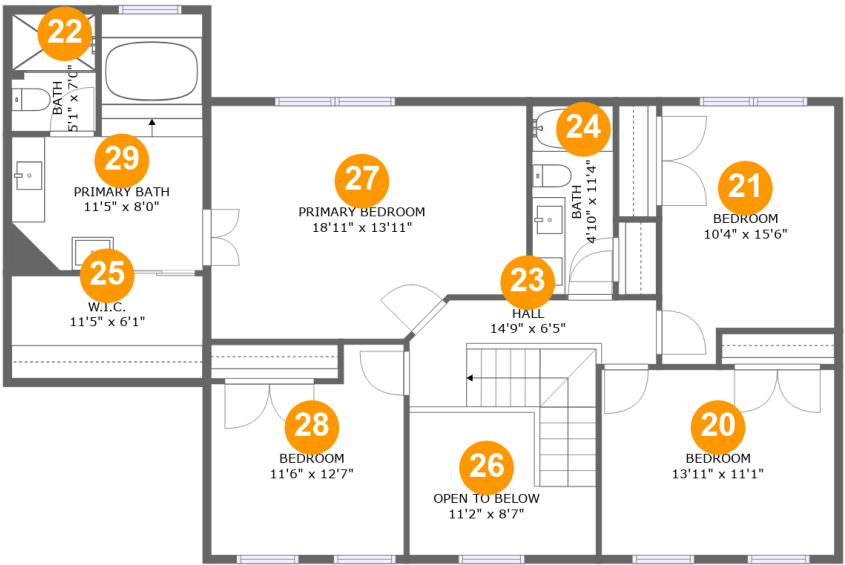
Home report

941 Stanton Street, Batavia, Kane County, Illinois, United States, 60510

#		Max Dimensions	sqft	Included
19	Foyer	11'3" x 20'4"	161 sq. ft	Yes

Home report

941 Stanton Street, Batavia, Kane County, Illinois, United States, 60510

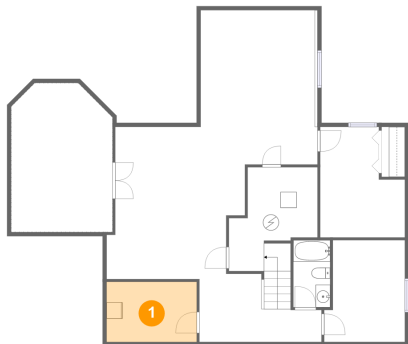


Room dimensions

Floor 3 Total:1184sqft    Excluded: 79sqft

#		Max Dimensions	sqft	Included
20	Bedroom	13'11" x 11'1"	155 sq. ft	Yes
21	Bedroom	10'4" x 15'6"	144 sq. ft	Yes
22	Bath	5'1" x 7'0"	35 sq. ft	Yes
23	Hall	14'9" x 6'5"	102 sq. ft	Yes
24	Bath	4'10" x 11'4"	55 sq. ft	Yes
25	W.I.C.	11'5" x 6'1"	70 sq. ft	Yes
26	Open To Below	11'2" x 8'7"	79 sq. ft	No
27	Primary Bedroom	18'11" x 13'11"	248 sq. ft	Yes
28	Bedroom	11'6" x 12'7"	127 sq. ft	Yes
29	Primary Bath	11'5" x 8'0"	136 sq. ft	Yes

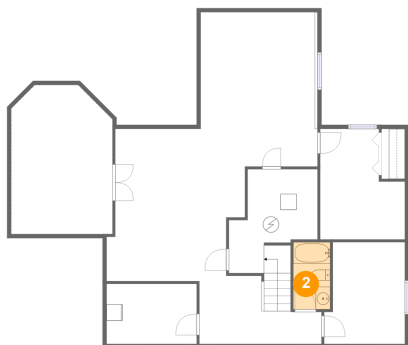
1 Floor 1 - Storage



Max Dimensions: 11'3" x 7'6"  
Calculated Area: 85 sq. ft  
Included: No

Heated: No  
Finished: No  
Enclosed: No  
Contiguous: Yes  
Permitted: Yes  
Wet space: No  
Addition: No  
Conversion: No

2 Floor 1 - Bath

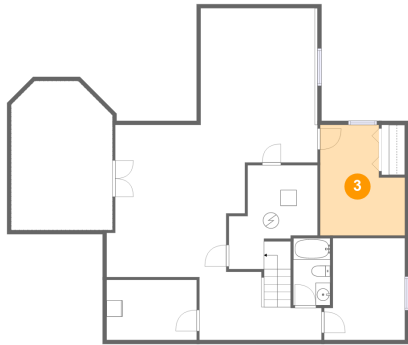


Max Dimensions: 4'7" x 8'5"  
Calculated Area: 39 sq. ft  
Included: Yes

Heated: Yes  
Finished: Yes  
Enclosed: Yes  
Contiguous: Yes  
Permitted: Yes  
Wet space: Yes  
Addition: No  
Conversion: No

941 Stanton Street, Batavia, Kane County, Illinois, United States,  
60510

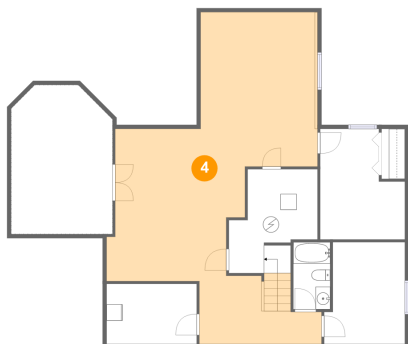
### 3 Floor 1 - Bedroom



Max Dimensions: 10'7" x 13'10"  
Calculated Area: 125 sq. ft  
Included: Yes

Heated: Yes  
Finished: Yes  
Enclosed: Yes  
Contiguous: Yes  
Permitted: Yes  
Wet space: No  
Addition: No  
Conversion: No

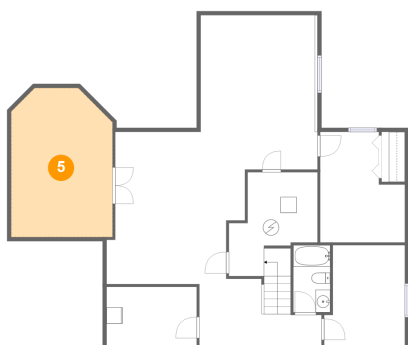
### 4 Floor 1 - Recreation Room



Max Dimensions: 25'3" x 41'6"  
Calculated Area: 664 sq. ft  
Included: Yes

Heated: Yes  
Finished: Yes  
Enclosed: Yes  
Contiguous: Yes  
Permitted: Yes  
Wet space: No  
Addition: No  
Conversion: No

### 5 Floor 1 - Crawl Space

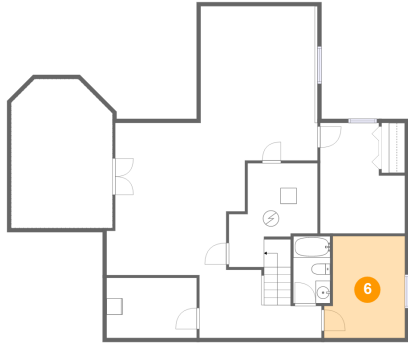


Max Dimensions: 12'8" x 18'8"  
Calculated Area: 223 sq. ft  
Included: No

Heated: No  
Finished: No  
Enclosed: No  
Contiguous: Yes  
Permitted: No  
Wet space: No  
Addition: No  
Conversion: No

941 Stanton Street, Batavia, Kane County, Illinois, United States,  
60510

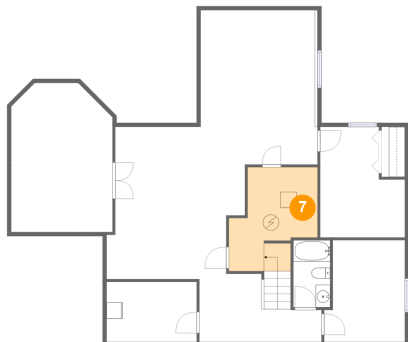
## 6 Floor 1 - Work Room



Max Dimensions: 10'1" x 12'9"  
Calculated Area: 119 sq. ft  
Included: No

Heated: Yes  
Finished: No  
Enclosed: Yes  
Contiguous: Yes  
Permitted: Yes  
Wet space: No  
Addition: No  
Conversion: No

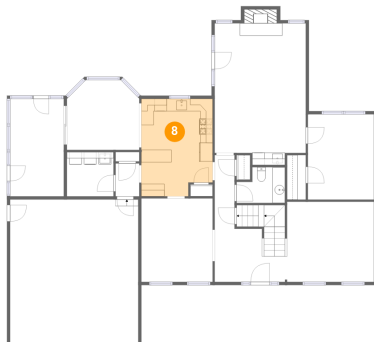
## 7 Floor 1 - Electrical Room



Max Dimensions: 11'1" x 13'0"  
Calculated Area: 114 sq. ft  
Included: No

Heated: No  
Finished: No  
Enclosed: Yes  
Contiguous: Yes  
Permitted: Yes  
Wet space: No  
Addition: No  
Conversion: No

## 8 Floor 2 - Kitchen

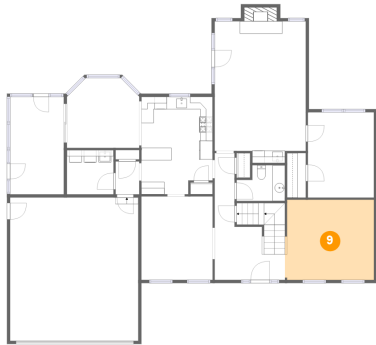


Max Dimensions: 11'5" x 15'7"  
Calculated Area: 170 sq. ft  
Included: Yes

Heated: Yes  
Finished: Yes  
Enclosed: Yes  
Contiguous: Yes  
Permitted: Yes  
Wet space: No  
Addition: No  
Conversion: No

941 Stanton Street, Batavia, Kane County, Illinois, United States,  
60510

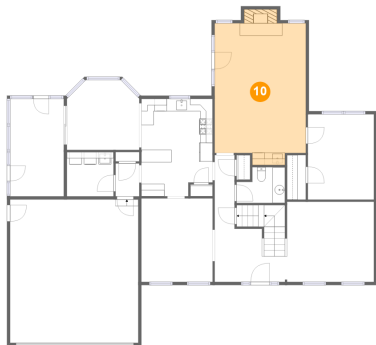
## 9 Floor 2 - Living Room



Max Dimensions: 14'3" x 12'10"  
Calculated Area: 182 sq. ft  
Included: Yes

Heated: Yes  
Finished: Yes  
Enclosed: Yes  
Contiguous: Yes  
Permitted: Yes  
Wet space: No  
Addition: No  
Conversion: No

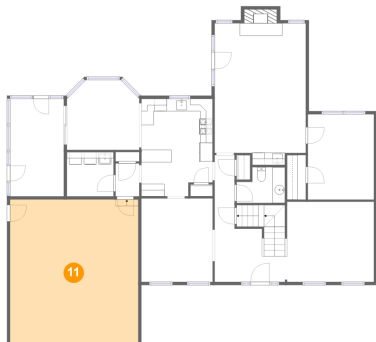
## 10 Floor 2 - Family Room



Max Dimensions: 14'7" x 22'9"  
Calculated Area: 326 sq. ft  
Included: Yes

Heated: Yes  
Finished: Yes  
Enclosed: Yes  
Contiguous: Yes  
Permitted: Yes  
Wet space: No  
Addition: No  
Conversion: No

## 11 Floor 2 - Garage

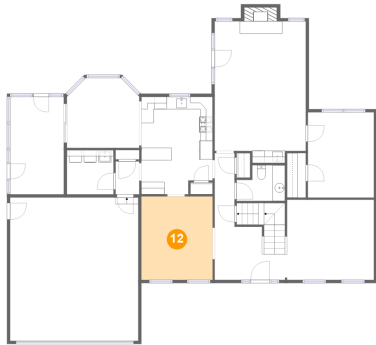


Max Dimensions: 20'7" x 23'0"  
Calculated Area: 473 sq. ft  
Included: No

Heated: No  
Finished: No  
Enclosed: Yes  
Contiguous: Yes  
Permitted: Yes  
Wet space: No  
Addition: No  
Conversion: No

941 Stanton Street, Batavia, Kane County, Illinois, United States,  
60510

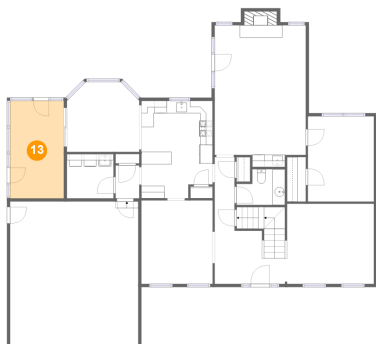
## 12 Floor 2 - Dining Room



Max Dimensions: 11'5" x 13'5"  
Calculated Area: 153 sq. ft  
Included: Yes

Heated: Yes  
Finished: Yes  
Enclosed: Yes  
Contiguous: Yes  
Permitted: Yes  
Wet space: No  
Addition: No  
Conversion: No

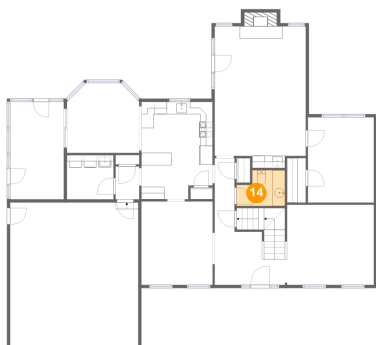
## 13 Floor 2 - Screened Porch



Max Dimensions: 8'7" x 15'8"  
Calculated Area: 135 sq. ft  
Included: No

Heated: No  
Finished: Yes  
Enclosed: No  
Contiguous: Yes  
Permitted: Yes  
Wet space: No  
Addition: No  
Conversion: No

## 14 Floor 2 - WC

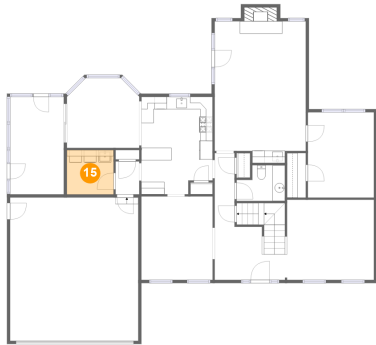


Max Dimensions: 7'9" x 5'9"  
Calculated Area: 39 sq. ft  
Included: Yes

Heated: Yes  
Finished: Yes  
Enclosed: Yes  
Contiguous: Yes  
Permitted: Yes  
Wet space: Yes  
Addition: No  
Conversion: No

941 Stanton Street, Batavia, Kane County, Illinois, United States,  
60510

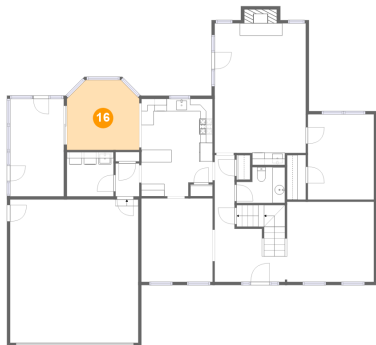
## 15 Floor 2 - Laundry



Max Dimensions: 7'6" x 7'1"  
Calculated Area: 53 sq. ft  
Included: Yes

Heated: Yes  
Finished: Yes  
Enclosed: Yes  
Contiguous: Yes  
Permitted: Yes  
Wet space: No  
Addition: No  
Conversion: No

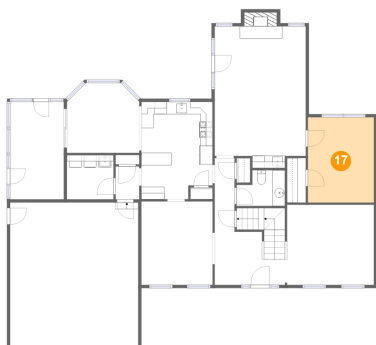
## 16 Floor 2 - Breakfast Nook



Max Dimensions: 11'7" x  
11'2"  
Calculated Area: 121 sq. ft  
Included: Yes

Heated: Yes  
Finished: Yes  
Enclosed: Yes  
Contiguous:  
Yes  
Permitted: Yes  
Wet space: No  
Addition: No  
Conversion: No

## 17 Floor 2 - Office / Bedroom

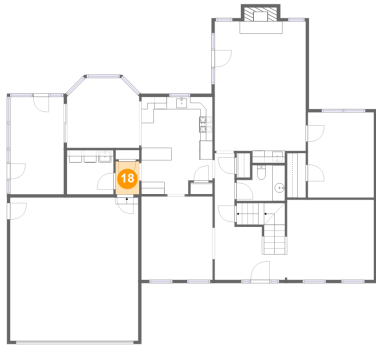


Max Dimensions: 10'7" x  
13'8"  
Calculated Area: 145 sq. ft  
Included: Yes

Heated: Yes  
Finished: Yes  
Enclosed: Yes  
Contiguous:  
Yes  
Permitted: Yes  
Wet space: No  
Addition: No  
Conversion: No

941 Stanton Street, Batavia, Kane County, Illinois, United States,  
60510

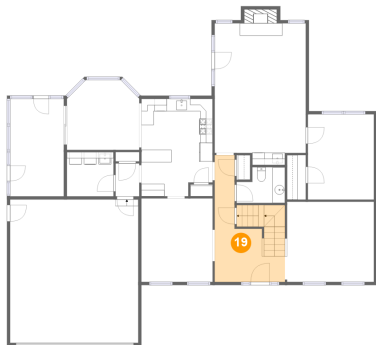
### 18 Floor 2 - Hall



Max Dimensions: 3'10" x 5'3"  
Calculated Area: 20 sq. ft  
Included: Yes

Heated: Yes  
Finished: Yes  
Enclosed: Yes  
Contiguous: Yes  
Permitted: Yes  
Wet space: No  
Addition: No  
Conversion: No

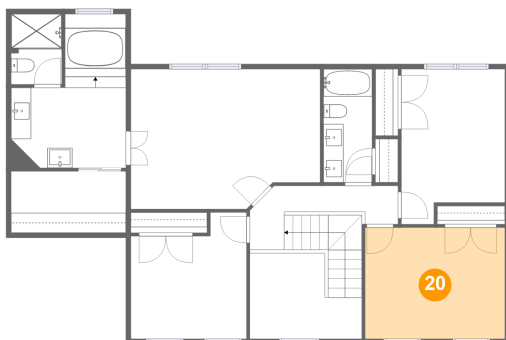
### 19 Floor 2 - Foyer



Max Dimensions: 11'3" x 20'4"  
Calculated Area: 161 sq. ft  
Included: Yes

Heated: Yes  
Finished: Yes  
Enclosed: Yes  
Contiguous: Yes  
Permitted: Yes  
Wet space: No  
Addition: No  
Conversion: No

### 20 Floor 3 - Bedroom

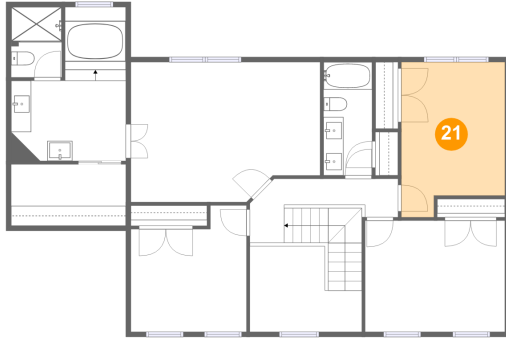


Max Dimensions: 13'11" x 11'1"  
Calculated Area: 155 sq. ft  
Included: Yes

Heated: Yes  
Finished: Yes  
Enclosed: Yes  
Contiguous: Yes  
Permitted: Yes  
Wet space: No  
Addition: No  
Conversion: No

941 Stanton Street, Batavia, Kane County, Illinois, United States,  
60510

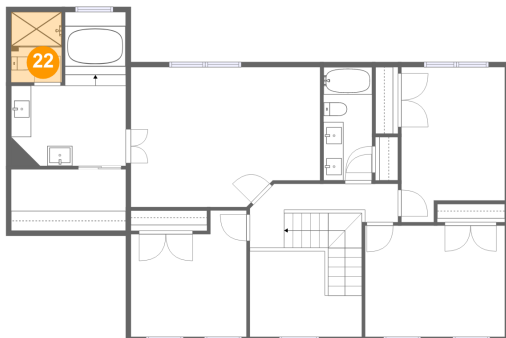
### 21 Floor 3 - Bedroom



Max Dimensions: 10'4" x 15'6"  
Calculated Area: 144 sq. ft  
Included: Yes

Heated: Yes  
Finished: Yes  
Enclosed: Yes  
Contiguous: Yes  
Permitted: Yes  
Wet space: No  
Addition: No  
Conversion: No

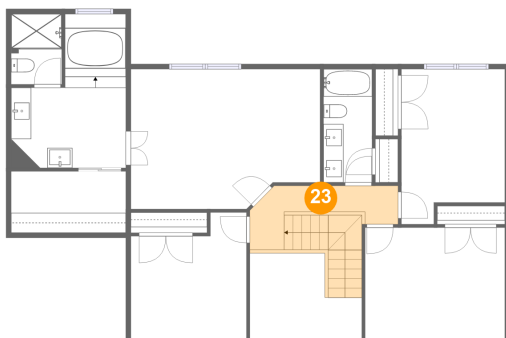
### 22 Floor 3 - Bath



Max Dimensions: 5'1" x 7'0"  
Calculated Area: 35 sq. ft  
Included: Yes

Heated: Yes  
Finished: Yes  
Enclosed: Yes  
Contiguous: Yes  
Permitted: Yes  
Wet space: Yes  
Addition: No  
Conversion: No

### 23 Floor 3 - Hall

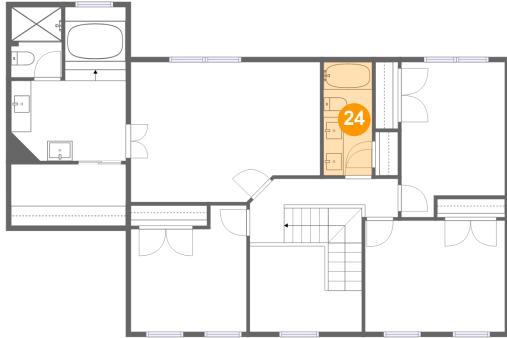


Max Dimensions: 14'9" x 6'5"  
Calculated Area: 102 sq. ft  
Included: Yes

Heated: Yes  
Finished: Yes  
Enclosed: Yes  
Contiguous: Yes  
Permitted: Yes  
Wet space: No  
Addition: No  
Conversion: No

941 Stanton Street, Batavia, Kane County, Illinois, United States,  
60510

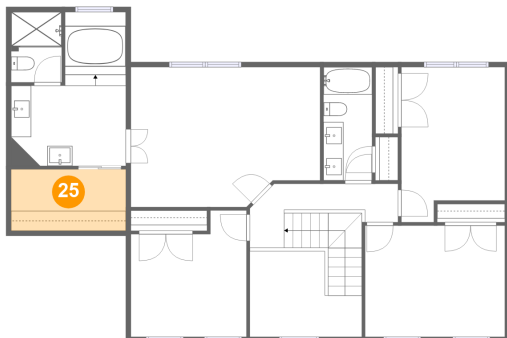
### 24 Floor 3 - Bath



Max Dimensions: 4'10" x 11'4"  
Calculated Area: 55 sq. ft  
Included: Yes

Heated: Yes  
Finished: Yes  
Enclosed: Yes  
Contiguous: Yes  
Permitted: Yes  
Wet space: Yes  
Addition: No  
Conversion: No

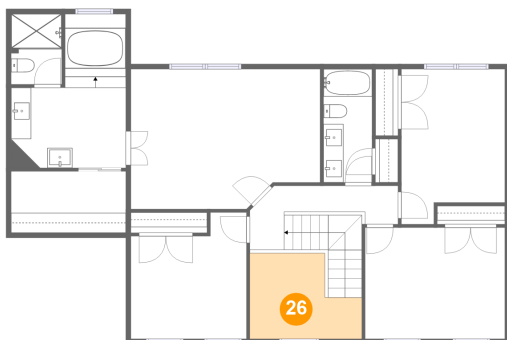
### 25 Floor 3 - W.I.C.



Max Dimensions: 11'5" x 6'1"  
Calculated Area: 70 sq. ft  
Included: Yes

Heated: Yes  
Finished: Yes  
Enclosed: Yes  
Contiguous: Yes  
Permitted: Yes  
Wet space: No  
Addition: No  
Conversion: No

### 26 Floor 3 - Open To Below

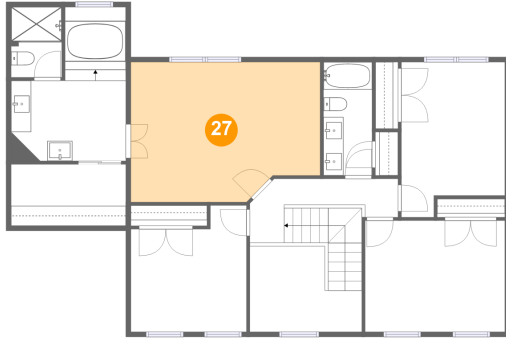


Max Dimensions: 11'2" x 8'7"  
Calculated Area: 79 sq. ft  
Included: No

Heated: No  
Finished: No  
Enclosed: No  
Contiguous: Yes  
Permitted: No  
Wet space: No  
Addition: No  
Conversion: No

941 Stanton Street, Batavia, Kane County, Illinois, United States,  
60510

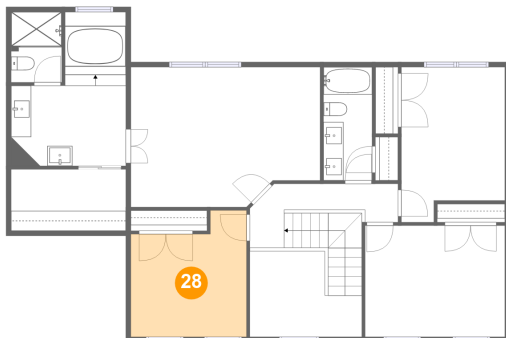
### 27 Floor 3 - Primary Bedroom



Max Dimensions: 18'11" x 13'11"  
Calculated Area: 248 sq. ft  
Included: Yes

Heated: Yes  
Finished: Yes  
Enclosed: Yes  
Contiguous: Yes  
Permitted: Yes  
Wet space: No  
Addition: No  
Conversion: No

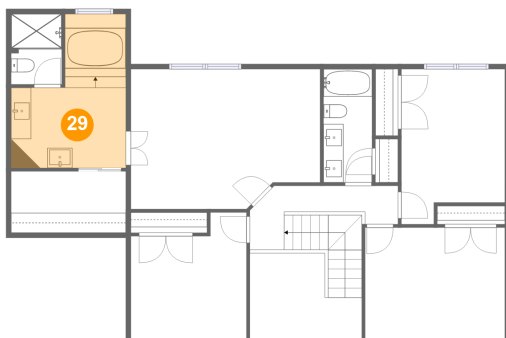
### 28 Floor 3 - Bedroom



Max Dimensions: 11'6" x 12'7"  
Calculated Area: 127 sq. ft  
Included: Yes

Heated: Yes  
Finished: Yes  
Enclosed: Yes  
Contiguous: Yes  
Permitted: Yes  
Wet space: No  
Addition: No  
Conversion: No

### 29 Floor 3 - Primary Bath



Max Dimensions: 11'5" x 8'0"  
Calculated Area: 136 sq. ft  
Included: Yes

Heated: Yes  
Finished: Yes  
Enclosed: Yes  
Contiguous: Yes  
Permitted: Yes  
Wet space: Yes  
Addition: No  
Conversion: No