

Home report

42 Queenston St,Pittsburgh,PA,US



Total Area: 1066 sq. ft
Below Ground: 81 sq. ft, Floor 2: 512 sq. ft, Floor 3: 473 sq. ft
Excluded: Storage 69 sq. ft, Basement 450 sq. ft, Patio 230 sq. ft, Porch 119 sq. ft, Walls: 146 sq. ft

Property summary



3
Floors



3
Bedrooms



1
Bathrooms

Home report

42 Queenston St,Pittsburgh,PA,US



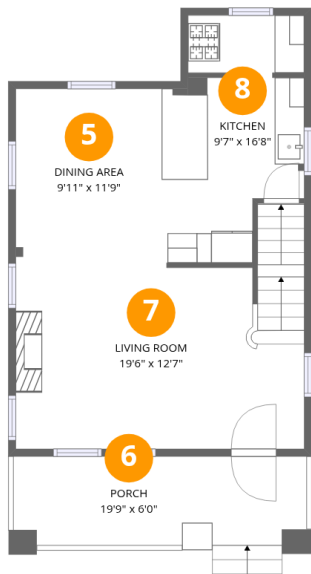
Room dimensions

Floor 1 Below ground Total:81sqft Excluded: 749sqft

#		Max Dimensions	sqft	Included
1	Room	10'2" x 7'4"	75 sq. ft	Yes
2	Patio	20'1" x 11'5"	230 sq. ft	No
3	Basement	19'6" x 23'1"	450 sq. ft	No
4	Storage	8'11" x 7'4"	66 sq. ft	No

Home report

42 Queenston St,Pittsburgh,PA,US



Room dimensions

Floor 2

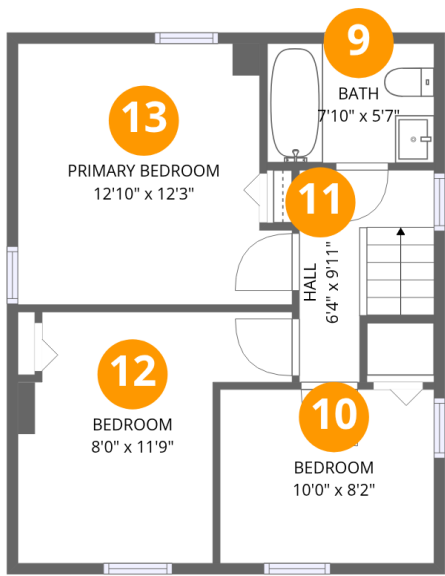
Total:512sqft

Excluded: 119sqft

#		Max Dimensions	sqft	Included
5	Dining Area	9'11" x 11'9"	116 sq. ft	Yes
6	Porch	19'9" x 6'0"	119 sq. ft	No
7	Living Room	19'6" x 12'7"	255 sq. ft	Yes
8	Kitchen	9'7" x 16'8"	135 sq. ft	Yes

Home report

42 Queenston St,Pittsburgh,PA,US



Room dimensions

Floor 3 Total:473sqft Excluded: 0sqft

#		Max Dimensions	sqft	Included
9	Bath	7'10" x 5'7"	44 sq. ft	Yes
10	Bedroom	10'0" x 8'2"	81 sq. ft	Yes
11	Hall	6'4" x 9'11"	52 sq. ft	Yes
12	Bedroom	8'0" x 11'9"	116 sq. ft	Yes
13	Primary Bedroom	12'10" x 12'3"	143 sq. ft	Yes

1 Floor 1 - Room



Max Dimensions: 10'2" x 7'4"
Calculated Area: 75 sq. ft
Included: No

Heated: Yes
Finished: Yes
Enclosed: Yes
Contiguous: No
Permitted: Yes
Wet space: No
Addition: No
Conversion: No

2 Floor 1 - Patio



Max Dimensions: 20'1" x 11'5"
Calculated Area: 230 sq. ft
Included: No

Heated: No
Finished: No
Enclosed: No
Contiguous: Yes
Permitted: Yes
Wet space: No
Addition: No
Conversion: No

3 Floor 1 - Basement



Max Dimensions: 19'6" x 23'1"
Calculated Area: 450 sq. ft
Included: No

Heated: Yes
Finished: No
Enclosed: Yes
Contiguous: Yes
Permitted: Yes
Wet space: No
Addition: No
Conversion: No

4 Floor 1 - Storage



Max Dimensions: 8'11" x 7'4"
Calculated Area: 66 sq. ft
Included: No

Heated: No
Finished: No
Enclosed: No
Contiguous: Yes
Permitted: Yes
Wet space: No
Addition: No
Conversion: No

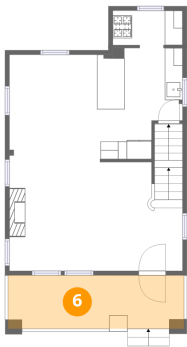
5 Floor 2 - Dining Area



Max Dimensions: 9'11" x 11'9"
Calculated Area: 116 sq. ft
Included: Yes

Heated: Yes
Finished: Yes
Enclosed: Yes
Contiguous: Yes
Permitted: Yes
Wet space: No
Addition: No
Conversion: No

6 Floor 2 - Porch



Max Dimensions: 19'9" x 6'0"
Calculated Area: 119 sq. ft
Included: No

Heated: No
Finished: No
Enclosed: No
Contiguous: Yes
Permitted: Yes
Wet space: No
Addition: No
Conversion: No

7 Floor 2 - Living Room



Max Dimensions: 19'6" x 12'7"
Calculated Area: 255 sq. ft
Included: Yes

Heated: Yes
Finished: Yes
Enclosed: Yes
Contiguous: Yes
Permitted: Yes
Wet space: No
Addition: No
Conversion: No

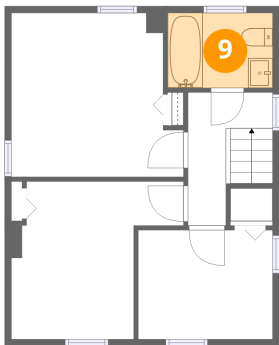
8 Floor 2 - Kitchen



Max Dimensions: 9'7" x 16'8"
Calculated Area: 135 sq. ft
Included: Yes

Heated: Yes
Finished: Yes
Enclosed: Yes
Contiguous: Yes
Permitted: Yes
Wet space: No
Addition: No
Conversion: No

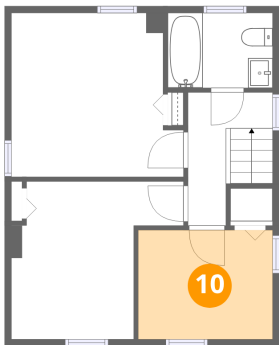
9 Floor 3 - Bath



Max Dimensions: 7'10" x 5'7"
Calculated Area: 44 sq. ft
Included: Yes

Heated: Yes
Finished: Yes
Enclosed: Yes
Contiguous: Yes
Permitted: Yes
Wet space: Yes
Addition: No
Conversion: No

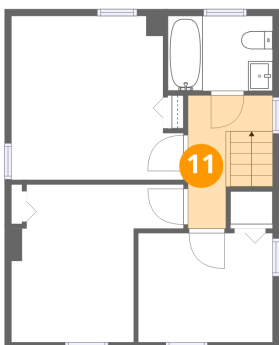
10 Floor 3 - Bedroom



Max Dimensions: 10'0" x 8'2"
Calculated Area: 81 sq. ft
Included: Yes

Heated: Yes
Finished: Yes
Enclosed: Yes
Contiguous: Yes
Permitted: Yes
Wet space: No
Addition: No
Conversion: No

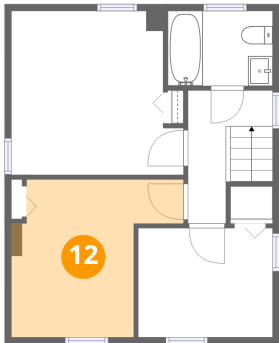
11 Floor 3 - Hall



Max Dimensions: 6'4" x 9'11"
Calculated Area: 52 sq. ft
Included: Yes

Heated: Yes
Finished: Yes
Enclosed: Yes
Contiguous: Yes
Permitted: Yes
Wet space: No
Addition: No
Conversion: No

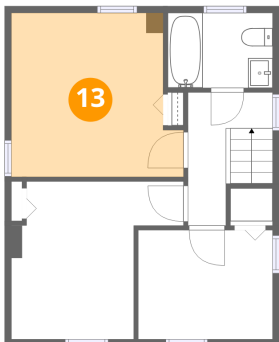
12 Floor 3 - Bedroom



Max Dimensions: 8'0" x 11'9"
Calculated Area: 116 sq. ft
Included: Yes

Heated: Yes
Finished: Yes
Enclosed: Yes
Contiguous: Yes
Permitted: Yes
Wet space: No
Addition: No
Conversion: No

13 Floor 3 - Primary Bedroom



Max Dimensions: 12'10" x 12'3"
Calculated Area: 143 sq. ft
Included: Yes

Heated: Yes
Finished: Yes
Enclosed: Yes
Contiguous: Yes
Permitted: Yes
Wet space: No
Addition: No
Conversion: No