



# 3106-80 ABSOLUTE AVE



Lainey Bonsell & Teresita Link

**LTHOME.ca**

*Bringing your dreams home.*

**ROYAL LEPAGE**  
Estate Realty  
MEMBER  
BROKERAGE INDEPENDENTLY OWNED AND OPERATED



*For more information on*

**3106-80 ABSOLUTE AVE**



Details:

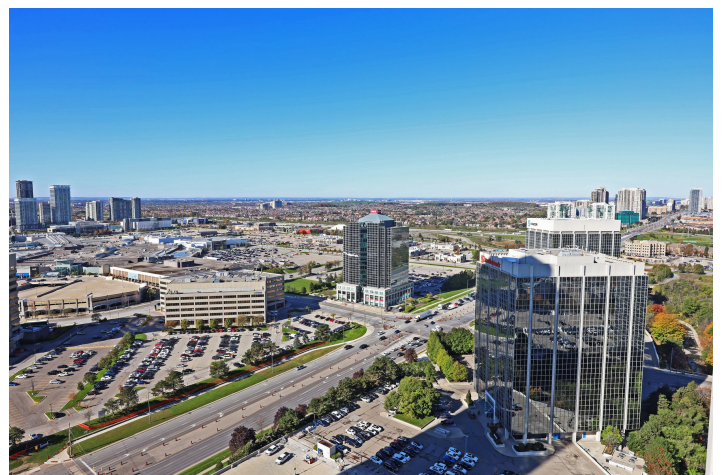
In the prime of central downtown Mississauga! 1+1 bedroom, 2 bathrooms featuring upgrades throughout complete with engineered flooring. Open concept living & dining with floor to ceiling windows, large balcony with gorgeous west views.

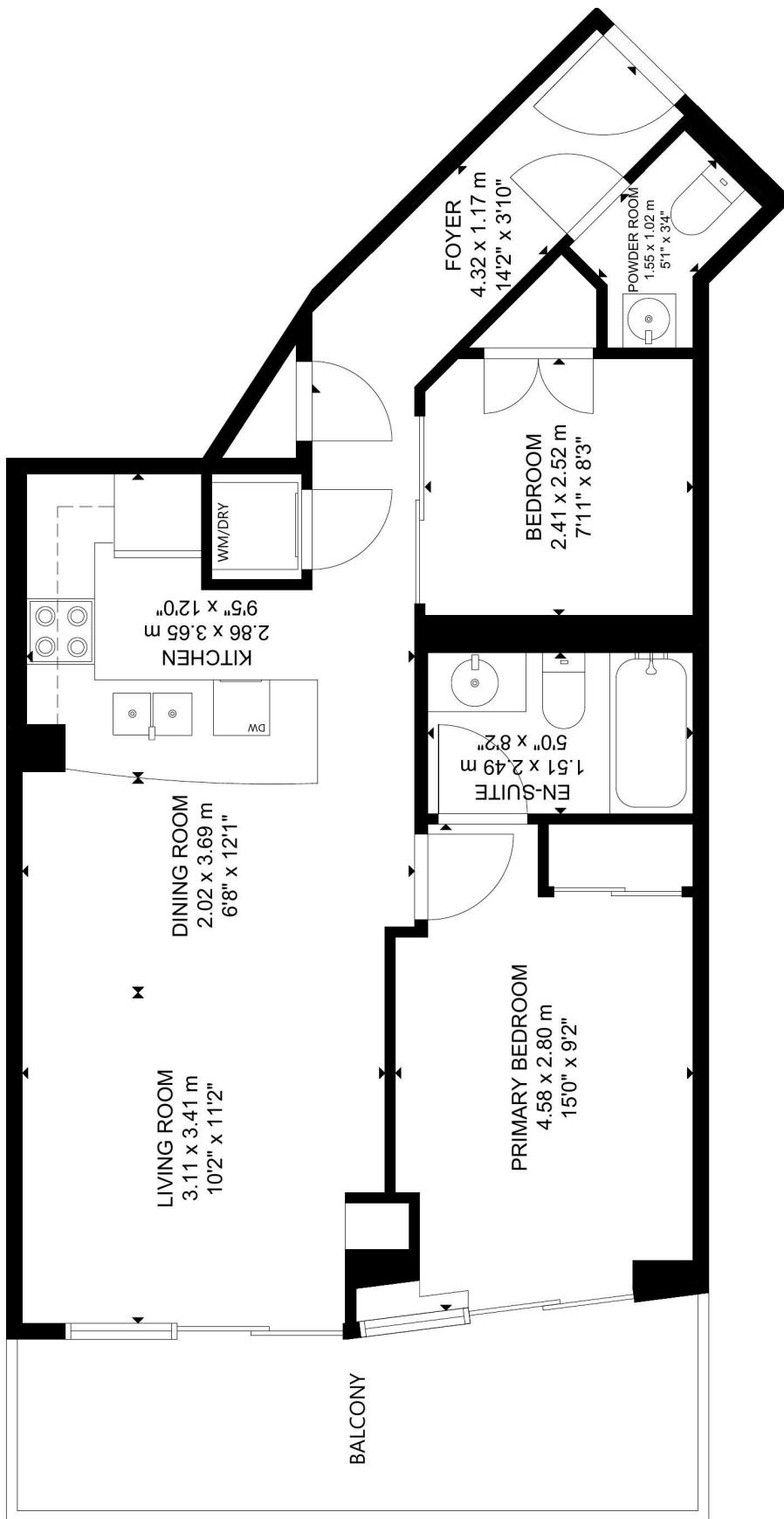
Includes underground parking space & storage locker. Unbeatable Location, Mins to 403/401 Steps To Square One Shopping, Sheridan College, Dining, Go & Public Transit Beautiful building refurbishment due to complete Jan/Feb 2022.



*Visit*

[www.LTHome.ca](http://www.LTHome.ca)





GROSS INTERNAL AREA  
 MAIN FLOOR: 62 m<sup>2</sup>/667 sq ft  
 TOTAL: 62 m<sup>2</sup>/667 sq ft  
 SIZE AND DIMENSIONS ARE APPROXIMATE, ACTUAL MAY VARY.

MAIN FLOOR

Not intended to solicit buyers or sellers currently under contract with another Brokerage



Lainey Bonsell & Teresita Link

**LTHOME.ca**

*Bringing your dreams home.*

*Presented by:*

**Heather Allin**, Salesperson

Royal LePage Estate Realty, Brokerage

Heather@LTHome.ca

416-400-6211