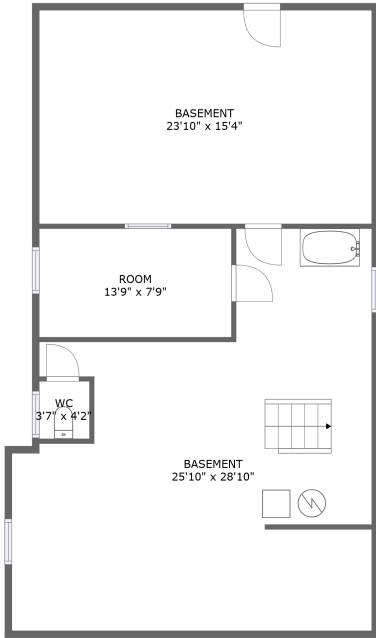
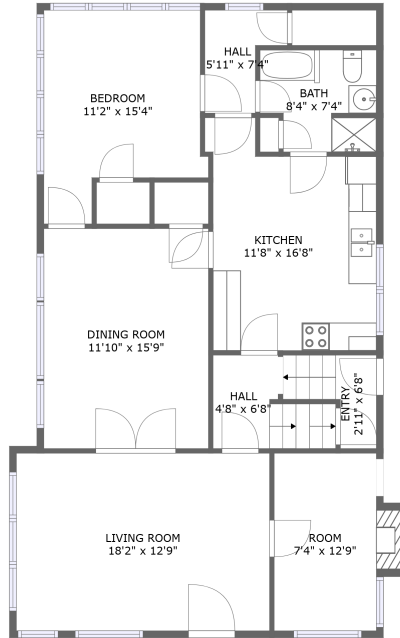


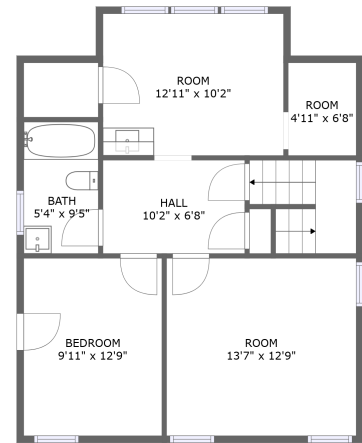
2059 Alta Ave, Louisville, KY, US



FLOOR 1




FLOOR 2



FLOOR 3

Property summary

 **0** Garages

 **2** Bedrooms

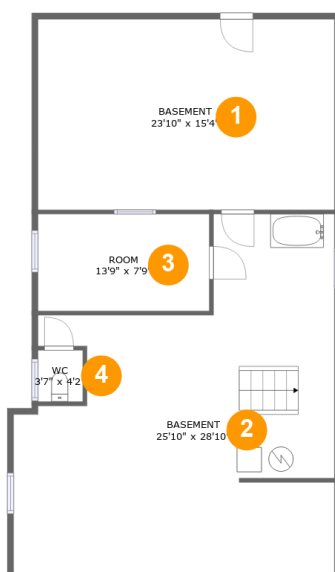
 **2** Bathrooms

 **0** Half baths

 **3** Floors

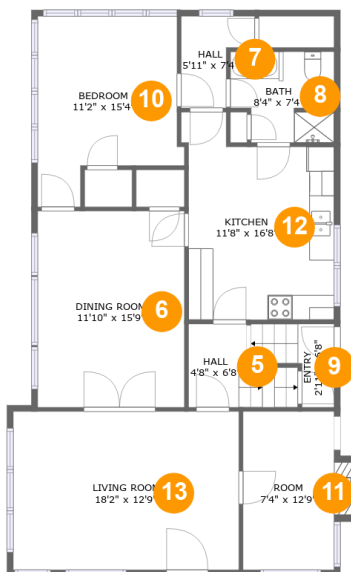
 **1,820** Gross living area sqft

 **3,059** Total sqft

2059 Alta Ave, Louisville, KY, US**Room dimensions****Floor 1****Total sqft: 1156 Living area: 0**

#		Dimensions	sqft	Counted as living area
1	Basement	23'10" x 15'4"	365 sq. ft	No
2	Basement	25'10" x 28'10"	576 sq. ft	No
3	Room	13'9" x 7'9"	107 sq. ft	No
4	Bath	3'7" x 4'2"	15 sq. ft	No

2059 Alta Ave, Louisville, KY, US



Room dimensions

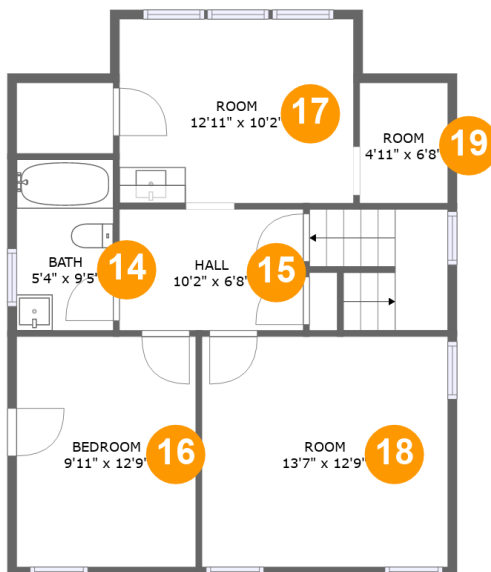
Floor 2

Total sqft: 1166

Living area: 1121

#		Dimensions	sqft	Counted as living area
5	Hall	4'8" x 6'8"	44 sq. ft	Yes
6	Dining Room	11'10" x 15'9"	186 sq. ft	Yes
7	Hall	5'11" x 7'4"	32 sq. ft	No
8	Bath	8'4" x 7'4"	55 sq. ft	Yes
9	Entry	2'11" x 6'8"	30 sq. ft	Yes
10	Bedroom	11'2" x 15'4"	147 sq. ft	Yes
11	Room	7'4" x 12'9"	102 sq. ft	Yes
12	Kitchen	11'8" x 16'8"	172 sq. ft	Yes
13	Living Room	18'2" x 12'9"	231 sq. ft	Yes

2059 Alta Ave, Louisville, KY, US



Room dimensions

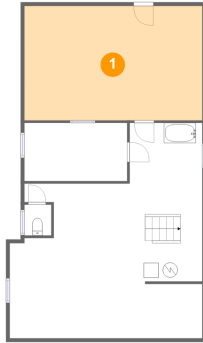
Floor 3

Total sqft: 737 Living area: 699

#		Dimensions	sqft	Counted as living area
14	Bath	5'4" x 9'5"	50 sq. ft	Yes
15	Hall	10'2" x 6'8"	68 sq. ft	Yes
16	Bedroom	9'11" x 12'9"	126 sq. ft	Yes
17	Room	12'11" x 10'2"	132 sq. ft	Yes
18	Room	13'7" x 12'9"	173 sq. ft	Yes
19	Room	4'11" x 6'8"	32 sq. ft	No

2059 Alta Ave, Louisville, KY, US

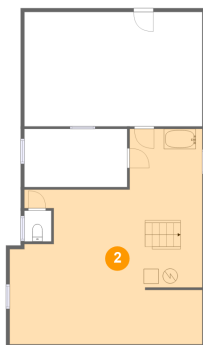
1 Floor 1 - Basement



Dimensions: 23'10" x 15'4"
Area: 365 sq. ft
Counted as living area: No

Heated: Yes
Finished: No
Enclosed: Yes
Contiguous: Yes
Permitted: Yes
Wet space: No
Addition: No
Conversion: No

2 Floor 1 - Basement

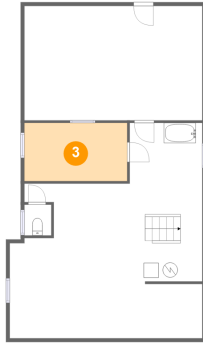


Dimensions: 25'10" x 28'10"
Area: 576 sq. ft
Counted as living area: No

Heated: Yes
Finished: No
Enclosed: Yes
Contiguous: Yes
Permitted: Yes
Wet space: No
Addition: No
Conversion: No

2059 Alta Ave, Louisville, KY, US

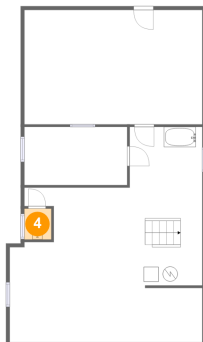
3 Floor 1 - Room



Dimensions: 13'9" x 7'9"
Area: 107 sq. ft
Counted as living area: No

Heated: Yes
Finished: No
Enclosed: Yes
Contiguous: Yes
Permitted: Yes
Wet space: No
Addition: No
Conversion: No

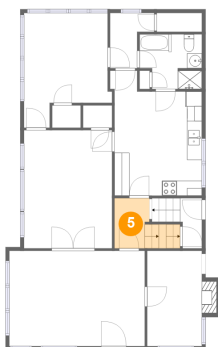
4 Floor 1 - Bath



Dimensions: 3'7" x 4'2"
Area: 15 sq. ft
Counted as living area: No

Heated: Yes
Finished: Yes
Enclosed: Yes
Contiguous: No
Permitted: Yes
Wet space: Yes
Addition: No
Conversion: No

5 Floor 2 - Hall

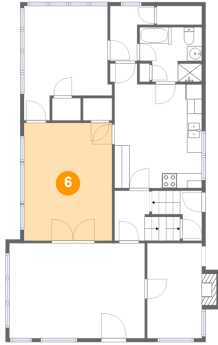


Dimensions: 4'8" x 6'8"
Area: 44 sq. ft
Counted as living area: Yes

Heated: Yes
Finished: Yes
Enclosed: Yes
Contiguous: Yes
Permitted: Yes
Wet space: No
Addition: No
Conversion: No

2059 Alta Ave, Louisville, KY, US

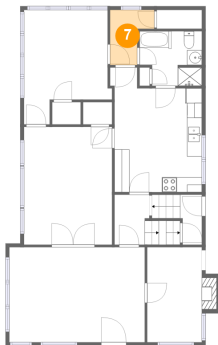
6 Floor 2 - Dining Room



Dimensions: 11'10" x 15'9"
Area: 186 sq. ft
Counted as living area: Yes

Heated: Yes
Finished: Yes
Enclosed: Yes
Contiguous: Yes
Permitted: Yes
Wet space: No
Addition: No
Conversion: No

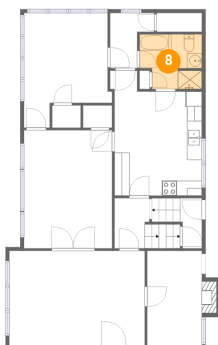
7 Floor 2 - Hall



Dimensions: 5'11" x 7'4"
Area: 32 sq. ft
Counted as living area: No

Heated: Yes
Finished: Yes
Enclosed: Yes
Contiguous: Yes
Permitted: Yes
Wet space: No
Addition: No
Conversion: No

8 Floor 2 - Bath

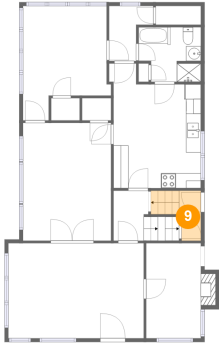


Dimensions: 8'4" x 7'4"
Area: 55 sq. ft
Counted as living area: Yes

Heated: Yes
Finished: Yes
Enclosed: Yes
Contiguous: Yes
Permitted: Yes
Wet space: Yes
Addition: No
Conversion: No

2059 Alta Ave, Louisville, KY, US

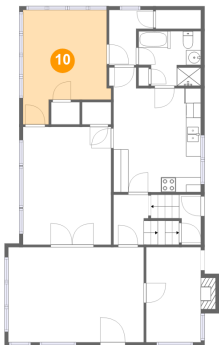
9 Floor 2 - Entry



Dimensions: 2'11" x 6'8"
Area: 30 sq. ft
Counted as living area: Yes

Heated: Yes
Finished: Yes
Enclosed: Yes
Contiguous: Yes
Permitted: Yes
Wet space: No
Addition: No
Conversion: No

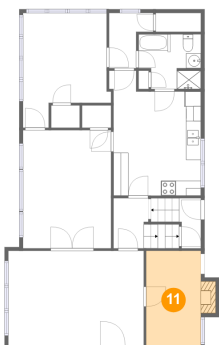
10 Floor 2 - Bedroom



Dimensions: 11'2" x 15'4"
Area: 147 sq. ft
Counted as living area: Yes

Heated: Yes
Finished: Yes
Enclosed: Yes
Contiguous: Yes
Permitted: Yes
Wet space: No
Addition: No
Conversion: No

11 Floor 2 - Room



Dimensions: 7'4" x 12'9"
Area: 102 sq. ft
Counted as living area: Yes

Heated: Yes
Finished: Yes
Enclosed: Yes
Contiguous: Yes
Permitted: Yes
Wet space: No
Addition: No
Conversion: No

2059 Alta Ave, Louisville, KY, US

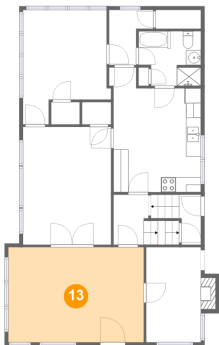
12 Floor 2 - Kitchen



Dimensions: 11'8" x 16'8"
Area: 172 sq. ft
Counted as living area: Yes

Heated: Yes
Finished: Yes
Enclosed: Yes
Contiguous: Yes
Permitted: Yes
Wet space: No
Addition: No
Conversion: No

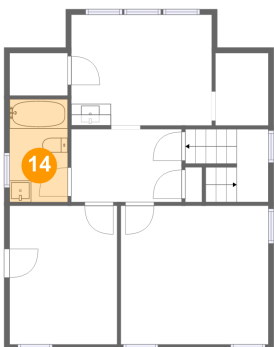
13 Floor 2 - Living Room



Dimensions: 18'2" x 12'9"
Area: 231 sq. ft
Counted as living area: Yes

Heated: Yes
Finished: Yes
Enclosed: Yes
Contiguous: Yes
Permitted: Yes
Wet space: No
Addition: No
Conversion: No

14 Floor 3 - Bath

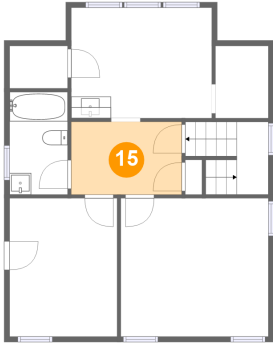


Dimensions: 5'4" x 9'5"
Area: 50 sq. ft
Counted as living area: Yes

Heated: Yes
Finished: Yes
Enclosed: Yes
Contiguous: Yes
Permitted: Yes
Wet space: Yes
Addition: No
Conversion: No

2059 Alta Ave, Louisville, KY, US

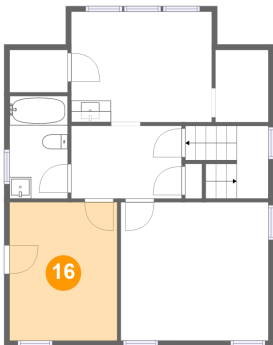
15 Floor 3 - Hall



Dimensions: 10'2" x 6'8"
Area: 68 sq. ft
Counted as living area: Yes

Heated: Yes
Finished: Yes
Enclosed: Yes
Contiguous: Yes
Permitted: Yes
Wet space: No
Addition: No
Conversion: No

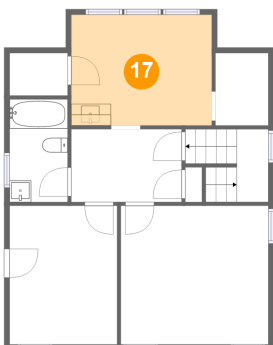
16 Floor 3 - Bedroom



Dimensions: 9'11" x 12'9"
Area: 126 sq. ft
Counted as living area: Yes

Heated: Yes
Finished: Yes
Enclosed: Yes
Contiguous: Yes
Permitted: Yes
Wet space: No
Addition: No
Conversion: No

17 Floor 3 - Room

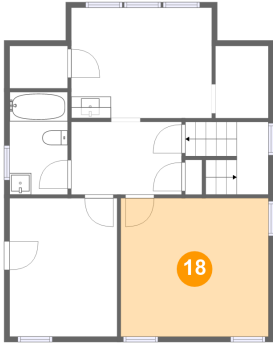


Dimensions: 12'11" x 10'2"
Area: 132 sq. ft
Counted as living area: Yes

Heated: Yes
Finished: Yes
Enclosed: Yes
Contiguous: Yes
Permitted: Yes
Wet space: No
Addition: No
Conversion: No

2059 Alta Ave, Louisville, KY, US

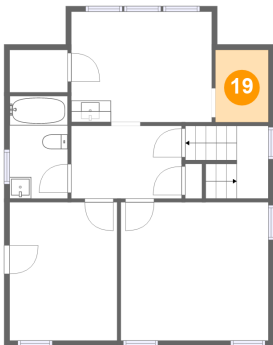
18 Floor 3 - Room



Dimensions: 13'7" x 12'9"
Area: 173 sq. ft
Counted as living area: Yes

Heated: Yes
Finished: Yes
Enclosed: Yes
Contiguous: Yes
Permitted: Yes
Wet space: No
Addition: No
Conversion: No

19 Floor 3 - Room



Dimensions: 4'11" x 6'8"
Area: 32 sq. ft
Counted as living area: No

Heated: Yes
Finished: Yes
Enclosed: Yes
Contiguous: Yes
Permitted: Yes
Wet space: No
Addition: No
Conversion: No