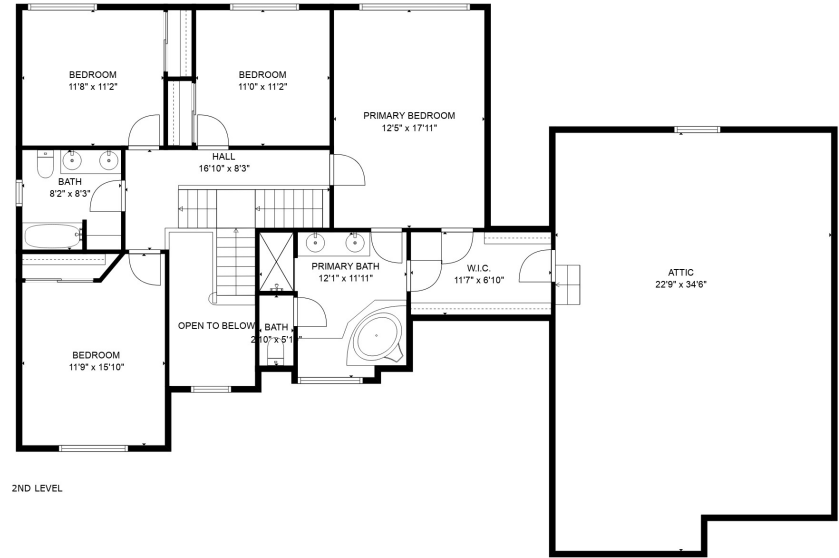
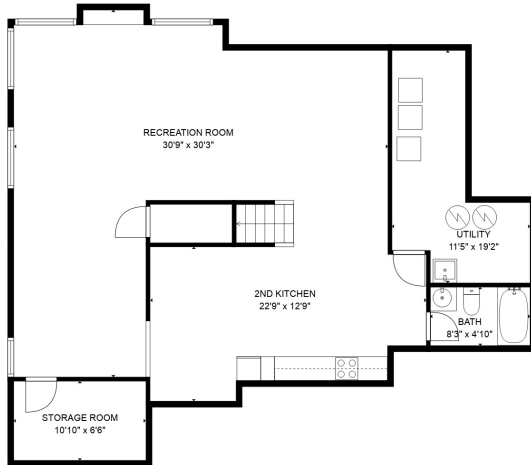


MAIN FLOOR



2ND LEVEL

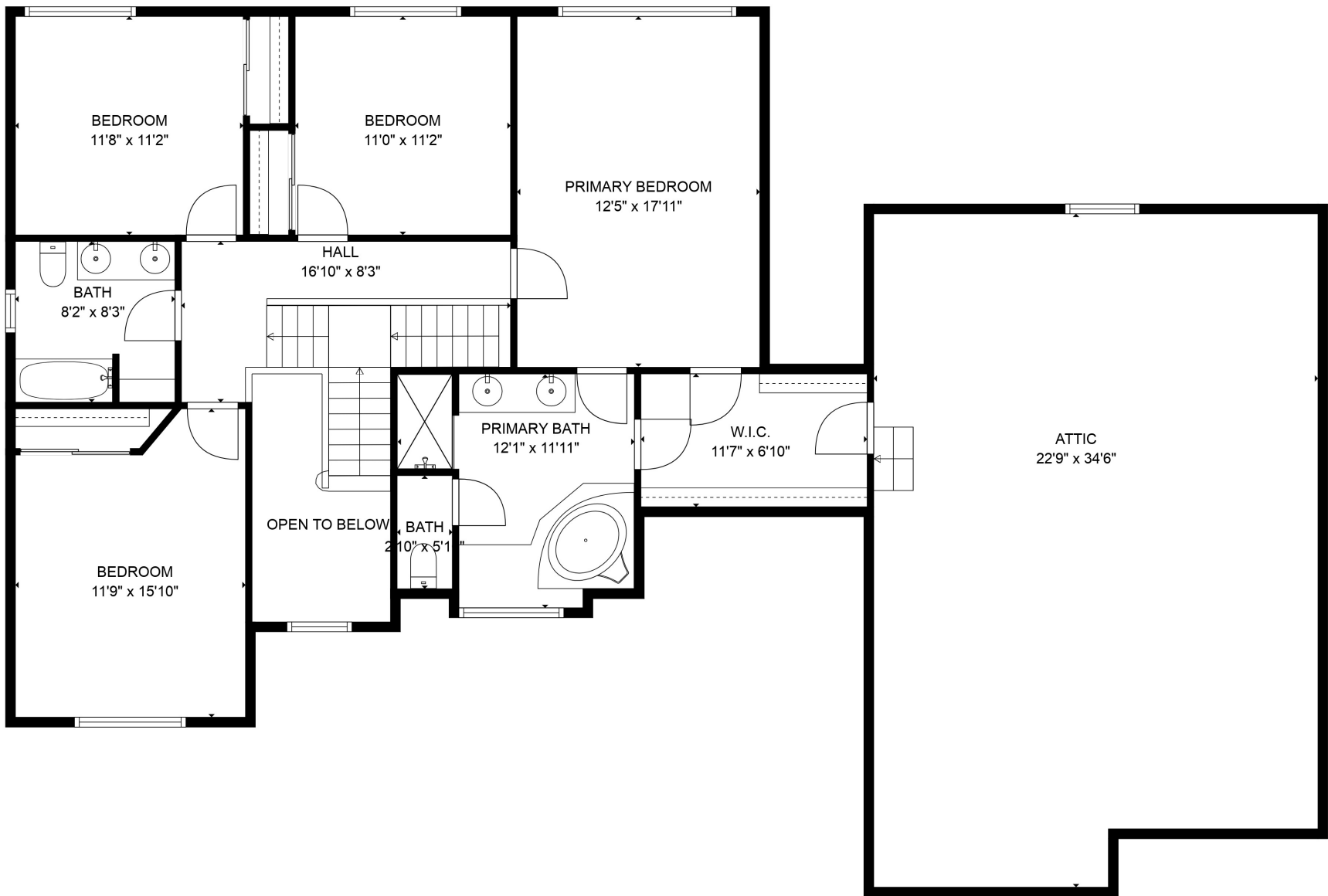


BASEMENT

TOTAL: 3315 sq. ft
 Below Ground: 969 sq. ft, MAIN FLOOR: 1218 sq. ft, 2ND LEVEL: 1128 sq. ft
 EXCLUDED AREAS: STORAGE ROOM: 71 sq. ft, UTILITY: 143 sq. ft, GARAGE: 752 sq. ft,
 FIREPLACE: 9 sq. ft, LOW CEILING: 409 sq. ft, ATTIC: 371 sq. ft,
 OPEN TO BELOW: 69 sq. ft

Sizes and Dimensions are approximate



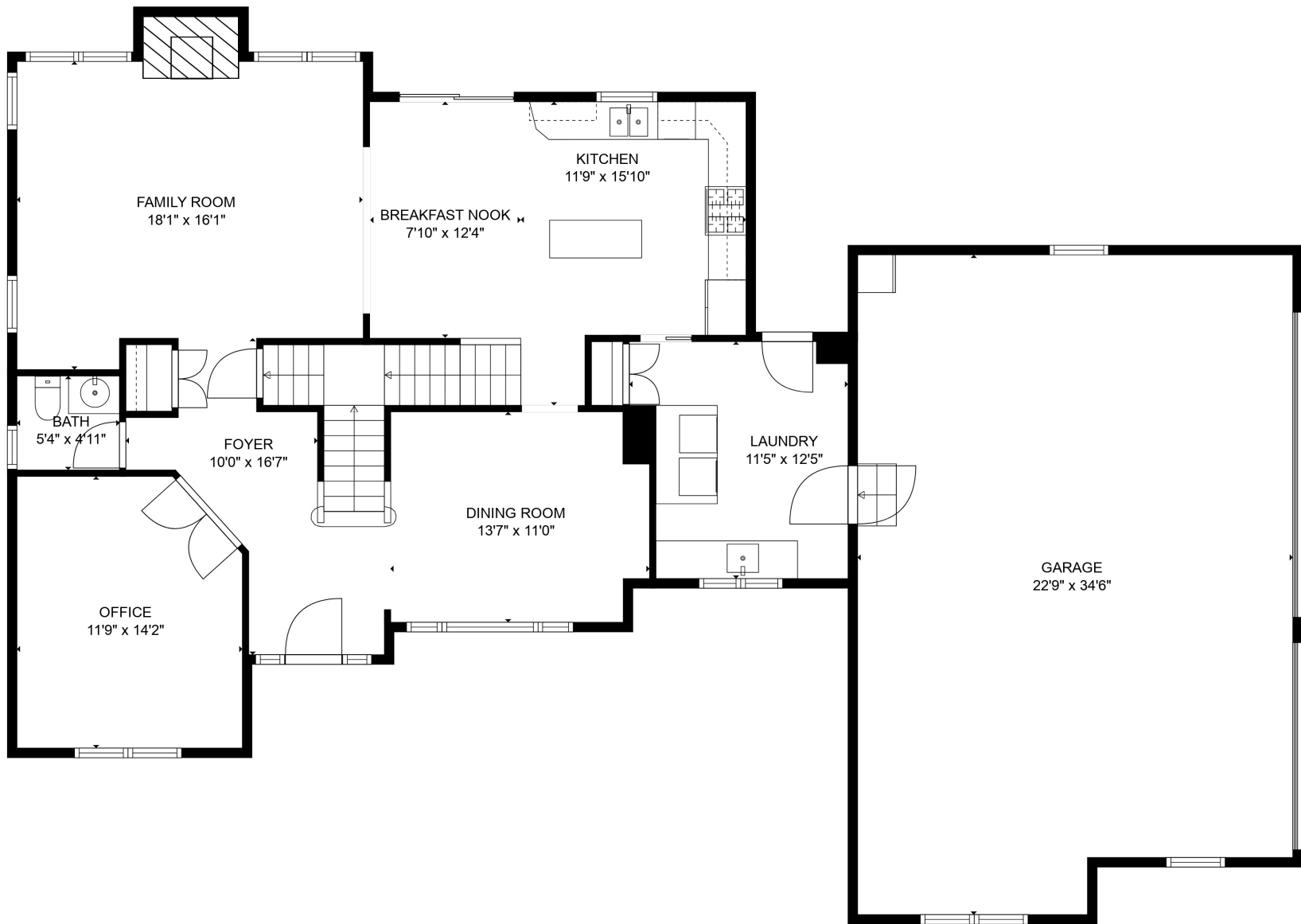


TOTAL: 3315 sq. ft

Below Ground: 969 sq. ft, MAIN FLOOR: 1218 sq. ft, 2ND LEVEL: 1128 sq. ft
 EXCLUDED AREAS: STORAGE ROOM: 71 sq. ft, UTILITY: 143 sq. ft, GARAGE: 752 sq. ft,
 FIREPLACE: 9 sq. ft, LOW CEILING: 409 sq. ft, ATTIC: 371 sq. ft,
 OPEN TO BELOW: 69 sq. ft

Sizes and Dimensions are approximate



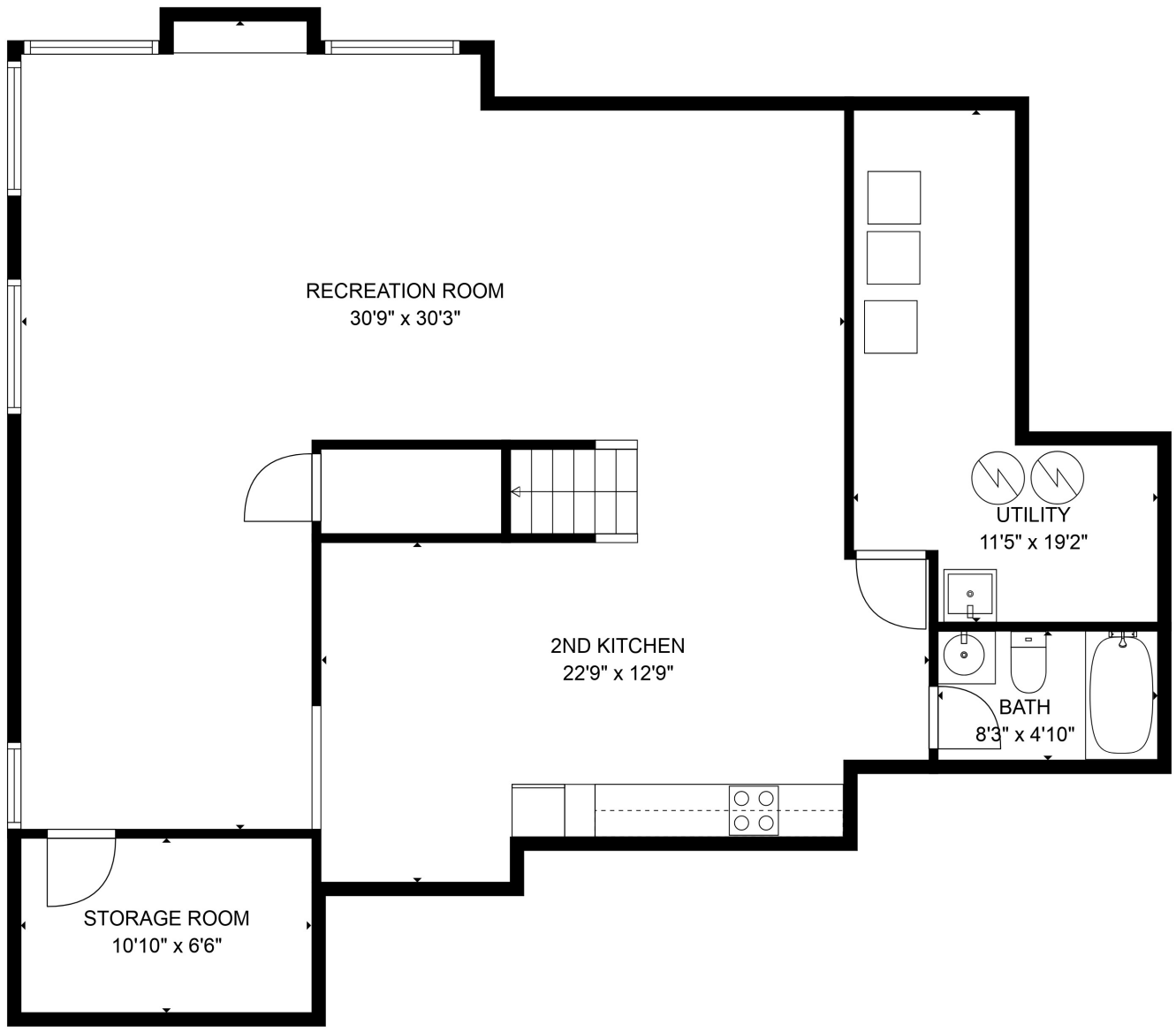


TOTAL: 3315 sq. ft

Below Ground: 969 sq. ft, MAIN FLOOR: 1218 sq. ft, 2ND LEVEL: 1128 sq. ft
 EXCLUDED AREAS: STORAGE ROOM: 71 sq. ft, UTILITY: 143 sq. ft, GARAGE: 752 sq. ft,
 FIREPLACE: 9 sq. ft, LOW CEILING: 409 sq. ft, ATTIC: 371 sq. ft,
 OPEN TO BELOW: 69 sq. ft

Sizes and Dimensions are approximate





TOTAL: 3315 sq. ft

Below Ground: 969 sq. ft, MAIN FLOOR: 1218 sq. ft, 2ND LEVEL: 1128 sq. ft
 EXCLUDED AREAS: STORAGE ROOM: 71 sq. ft, UTILITY: 143 sq. ft, GARAGE: 752 sq. ft,
 FIREPLACE: 9 sq. ft, LOW CEILING: 409 sq. ft, ATTIC: 371 sq. ft,
 OPEN TO BELOW: 69 sq. ft

Sizes and Dimensions are approximate

