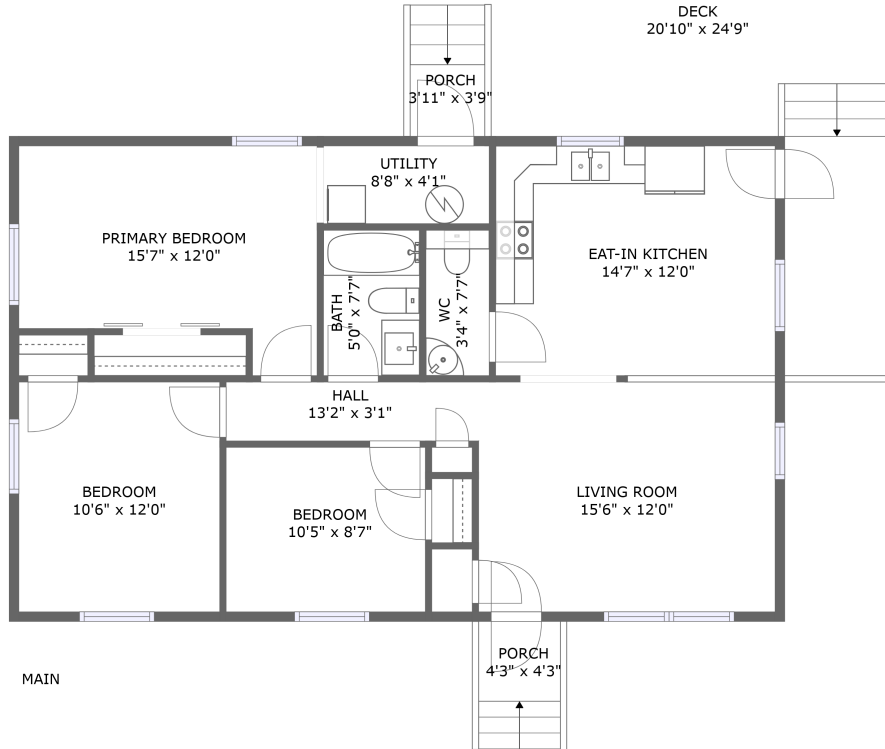


3320 Catawba Valley Drive, Salem, Roanoke County, Virginia, United States, 24153



Property Summary

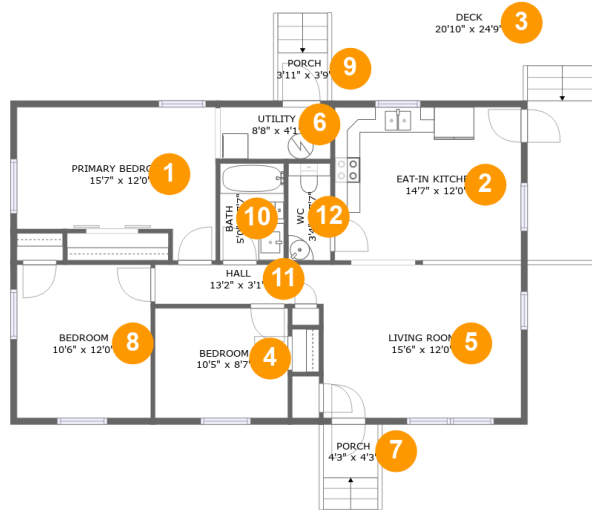
 **0** garages  **3** bedrooms  **1** bathrooms  **1** half baths

 **1** floors

 **1,026** Gross Living Area sqft

 **1,404** total sqft

3320 Catawba Valley Drive, Salem, Roanoke County, Virginia, United States, 24153



Room Dimensions

Floor 1

Total sqft: 1404

Living area: 1026

#	Room name	Dimensions	Area (sqft)	Counted as Living Area
1	Primary Bedroom	15'7" x 12'0"	157 sq. ft	Yes
2	Eat-in Kitchen	14'7" x 12'0"	178 sq. ft	Yes
3	Deck	20'10" x 24'9"	323 sq. ft	No
4	Bedroom	10'5" x 8'7"	89 sq. ft	Yes
5	Living Room	15'6" x 12'0"	186 sq. ft	Yes
6	Utility	8'8" x 4'1"	35 sq. ft	Yes
7	Porch	4'3" x 4'3"	28 sq. ft	No
8	Bedroom	10'6" x 12'0"	126 sq. ft	Yes
9	Porch	3'11" x 3'9"	27 sq. ft	No
10	Bath	5'0" x 7'7"	38 sq. ft	Yes
11	Hall	13'2" x 3'1"	41 sq. ft	Yes

Scan captured on Tue, 22 Oct 2024 19:45:53 GMT

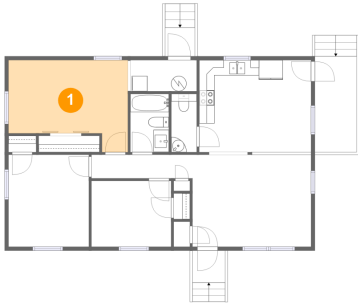
Information is calculated by CubiCasa technology; deemed highly reliable but not guaranteed.

**3320 Catawba Valley Drive, Salem, Roanoke
County, Virginia, United States, 24153**

#	Room name	Dimensions	Area (sqft)	Counted as Living Area
12	Wc	3'4" x 7'7"	25 sq. ft	Yes

3320 Catawba Valley Drive, Salem, Roanoke County, Virginia, United States, 24153

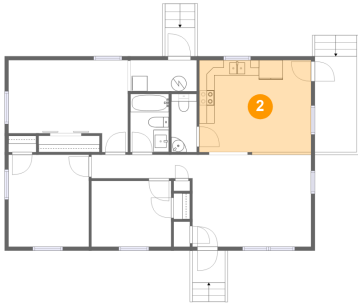
1 Floor 1 - Primary Bedroom



Dimensions: 15'7" x 12'0"
Area: 157 sq. ft
Counted as Living Area:
Yes

Heated: Yes
Finished: Yes
Enclosed: Yes
Contiguous:
Yes
Permitted: Yes
Wet Space: No
Addition: No
Conversion: No

2 Floor 1 - Eat-in Kitchen

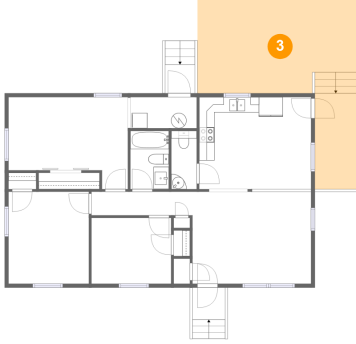


Dimensions: 14'7" x 12'0"
Area: 178 sq. ft
Counted as Living Area:
Yes

Heated: Yes
Finished: Yes
Enclosed: Yes
Contiguous:
Yes
Permitted: Yes
Wet Space: No
Addition: No
Conversion: No

3320 Catawba Valley Drive, Salem, Roanoke County, Virginia, United States, 24153

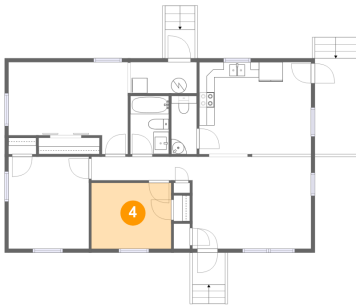
3 Floor 1 - Deck



Dimensions: 20'10" x 24'9"
Area: 323 sq. ft
Counted as Living Area: No

Heated: No
Finished: Yes
Enclosed: No
Contiguous: Yes
Permitted: Yes
Wet Space: No
Addition: No
Conversion: No

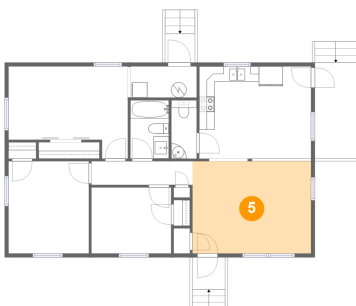
4 Floor 1 - Bedroom



Dimensions: 10'5" x 8'7"
Area: 89 sq. ft
Counted as Living Area: Yes

Heated: Yes
Finished: Yes
Enclosed: Yes
Contiguous: Yes
Permitted: Yes
Wet Space: No
Addition: No
Conversion: No

5 Floor 1 - Living Room

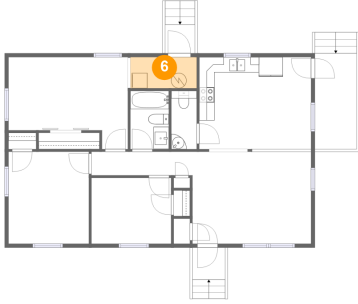


Dimensions: 15'6" x 12'0"
Area: 186 sq. ft
Counted as Living Area: Yes

Heated: Yes
Finished: Yes
Enclosed: Yes
Contiguous: Yes
Permitted: Yes
Wet Space: No
Addition: No
Conversion: No

3320 Catawba Valley Drive, Salem, Roanoke County, Virginia, United States, 24153

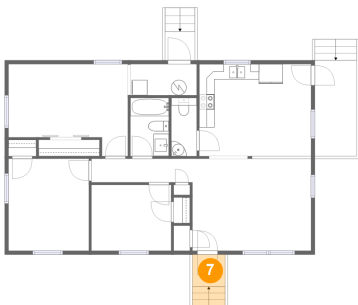
6 Floor 1 - Utility



Dimensions: 8'8" x 4'1"
Area: 35 sq. ft
Counted as Living Area:
Yes

Heated: Yes
Finished: Yes
Enclosed: Yes
Contiguous:
Yes
Permitted: Yes
Wet Space: No
Addition: No
Conversion: No

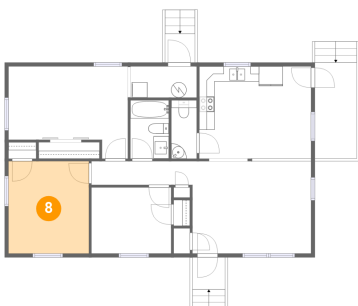
7 Floor 1 - Porch



Dimensions: 4'3" x 4'3"
Area: 28 sq. ft
Counted as Living Area: No

Heated: No
Finished: Yes
Enclosed: No
Contiguous: Yes
Permitted: Yes
Wet Space: No
Addition: No
Conversion: No

8 Floor 1 - Bedroom

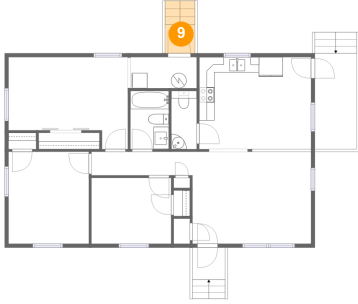


Dimensions: 10'6" x 12'0"
Area: 126 sq. ft
Counted as Living Area:
Yes

Heated: Yes
Finished: Yes
Enclosed: Yes
Contiguous:
Yes
Permitted: Yes
Wet Space: No
Addition: No
Conversion: No

3320 Catawba Valley Drive, Salem, Roanoke County, Virginia, United States, 24153

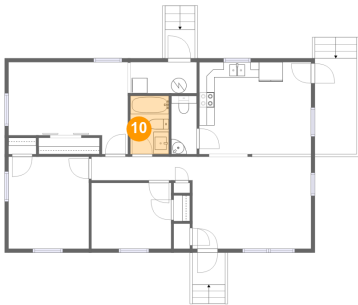
9 Floor 1 - Porch



Dimensions: 3'11" x 3'9"
Area: 27 sq. ft
Counted as Living Area: No

Heated: No
Finished: Yes
Enclosed: No
Contiguous: Yes
Permitted: Yes
Wet Space: No
Addition: No
Conversion: No

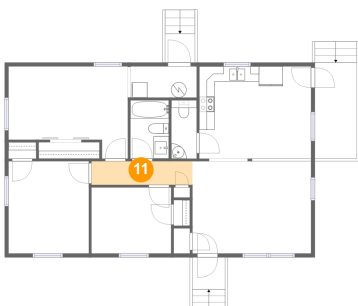
10 Floor 1 - Bath



Dimensions: 5'0" x 7'7"
Area: 38 sq. ft
Counted as Living Area: Yes

Heated: Yes
Finished: Yes
Enclosed: Yes
Contiguous: Yes
Permitted: Yes
Wet Space: Yes
Addition: No
Conversion: No

11 Floor 1 - Hall

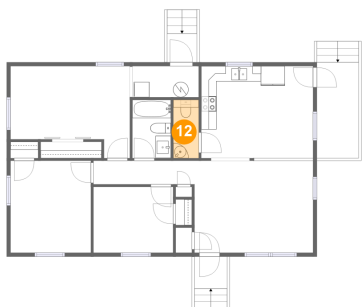


Dimensions: 13'2" x 3'1"
Area: 41 sq. ft
Counted as Living Area: Yes

Heated: Yes
Finished: Yes
Enclosed: Yes
Contiguous: Yes
Permitted: Yes
Wet Space: No
Addition: No
Conversion: No

3320 Catawba Valley Drive, Salem, Roanoke County, Virginia, United States, 24153

12 Floor 1 - Wc



Dimensions: 3'4" x 7'7"
Area: 25 sq. ft
Counted as Living Area:
Yes

Heated: Yes
Finished: Yes
Enclosed: Yes
Contiguous:
Yes
Permitted: Yes
Wet Space: Yes
Addition: No
Conversion: No