

Home report

615 Wright Street, Corry, Erie County, Pennsylvania, United States, 16407



Total Area: 2012 sq. ft

Below Ground: 0 sq. ft, Floor 2: 1504 sq. ft, Floor 3: 508 sq. ft

Excluded: Storage 518 sq. ft, Basement 558 sq. ft, Garage 746 sq. ft, Outdoor Porch 60 sq. ft, Outdoor Patio 879 sq. ft, Embeddedwindow 7 sq. ft, Low Ceiling 50 sq. ft, Walls: 298 sq. ft

Property summary



3 Floors



5 Bedrooms



1 Bathrooms

Home report

615 Wright Street, Corry, Erie County, Pennsylvania, United States, 16407



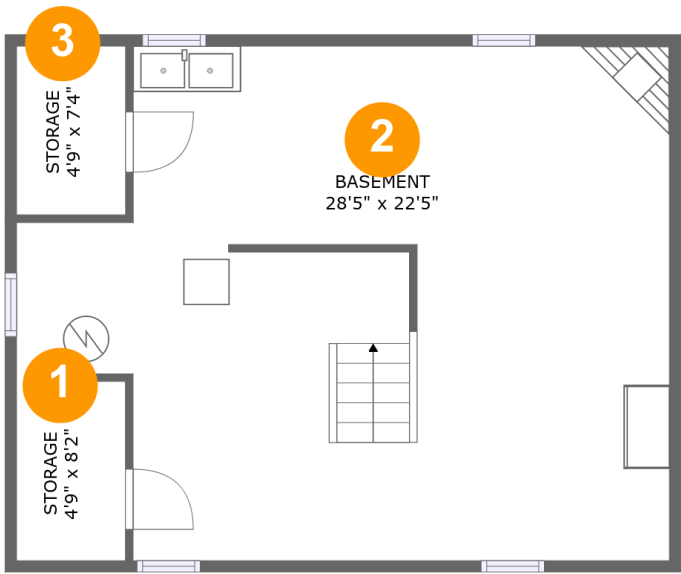
1
Half baths



1
Garages

Home report

615 Wright Street, Corry, Erie County, Pennsylvania, United States, 16407



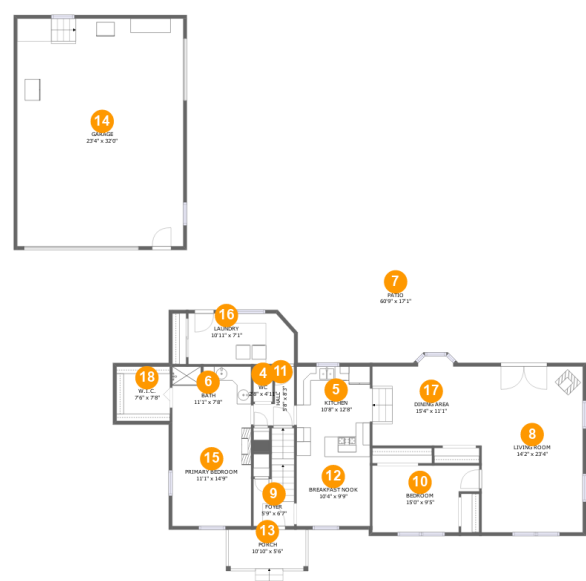
Room dimensions

Floor 1 Below ground Total:0sqft Excluded: 639sqft

#		Max Dimensions	sqft	Included
1	Storage	4'9" x 8'2"	38 sq. ft	No
2	Basement	28'5" x 22'5"	558 sq. ft	No
3	Storage	4'9" x 7'4"	35 sq. ft	No

Home report

615 Wright Street, Corry, Erie County, Pennsylvania, United States, 16407



Room dimensions

Floor 2

Total:1504sqft

Excluded: 1692sqft

#		Max Dimensions	sqft	Included
4	WC	2'8" x 4'11"	13 sq. ft	Yes
5	Kitchen	10'8" x 12'8"	132 sq. ft	Yes
6	Bath	11'1" x 7'8"	84 sq. ft	Yes
7	Patio	60'9" x 17'1"	887 sq. ft	No
8	Living Room	14'2" x 23'4"	331 sq. ft	Yes
9	Foyer	5'9" x 6'7"	61 sq. ft	Yes
10	Bedroom	15'0" x 9'5"	124 sq. ft	Yes
11	Hall	5'8" x 8'3"	32 sq. ft	Yes
12	Breakfast Nook	10'4" x 9'9"	100 sq. ft	Yes
13	Porch	10'10" x 5'6"	60 sq. ft	No
14	Garage	23'4" x 32'0"	746 sq. ft	No

Home report

615 Wright Street, Corry, Erie County, Pennsylvania, United States, 16407

#		Max Dimensions	sqft	Included
15	Primary Bedroom	11'1" x 14'9"	163 sq. ft	Yes
16	Laundry	10'11" x 7'1"	102 sq. ft	Yes
17	Dining Area	15'4" x 11'1"	171 sq. ft	Yes
18	W.I.C.	7'6" x 7'8"	58 sq. ft	Yes

Home report

615 Wright Street, Corry, Erie County, Pennsylvania, United States, 16407

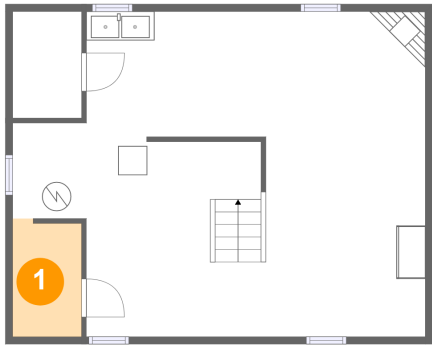


Room dimensions

Floor 3 Total:508sqft Excluded: 487sqft

#		Max Dimensions	sqft	Included
19	Primary Bedroom	11'0" x 14'5"	130 sq. ft	No
20	W.I.C.	6'2" x 8'11"	44 sq. ft	Yes
21	Hall	6'2" x 10'4"	64 sq. ft	Yes
22	Bedroom	8'10" x 7'3"	65 sq. ft	Yes
23	Storage	13'8" x 32'0"	437 sq. ft	No
24	Bedroom	10'8" x 12'0"	115 sq. ft	Yes
25	Bath	8'5" x 4'10"	41 sq. ft	Yes
26	W.I.C.	6'1" x 7'3"	16 sq. ft	Yes

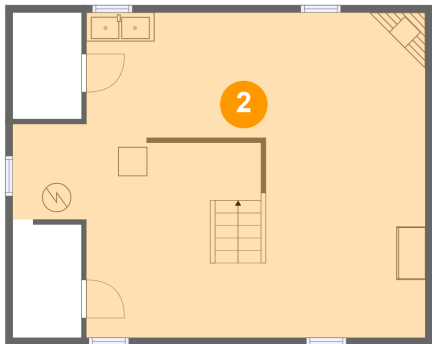
1 Floor 1 - Storage



Max Dimensions: 4'9" x 8'2"
Calculated Area: 38 sq. ft
Included: No

Heated: No
Finished: No
Enclosed: No
Contiguous: Yes
Permitted: Yes
Wet space: No
Addition: No
Conversion: No

2 Floor 1 - Basement

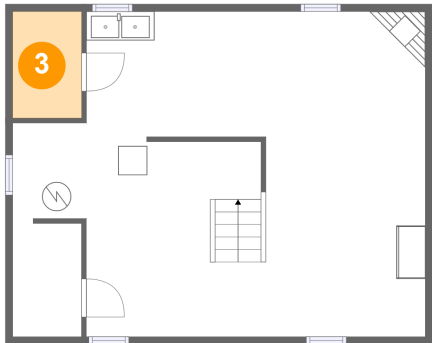


Max Dimensions: 28'5" x 22'5"
Calculated Area: 558 sq. ft
Included: No

Heated: Yes
Finished: No
Enclosed: Yes
Contiguous: Yes
Permitted: Yes
Wet space: No
Addition: No
Conversion: No

615 Wright Street, Corry, Erie County, Pennsylvania, United States, 16407

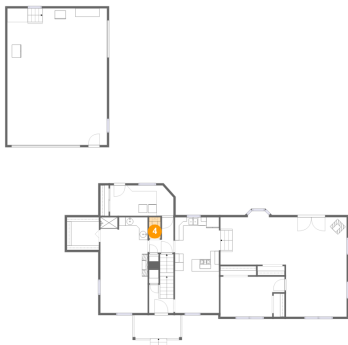
3 Floor 1 - Storage



Max Dimensions: 4'9" x 7'4"
Calculated Area: 35 sq. ft
Included: No

Heated: No
Finished: No
Enclosed: No
Contiguous: Yes
Permitted: Yes
Wet space: No
Addition: No
Conversion: No

4 Floor 2 - WC



Max Dimensions: 2'8" x 4'11"
Calculated Area: 13 sq. ft
Included: Yes

Heated: Yes
Finished: Yes
Enclosed: Yes
Contiguous: Yes
Permitted: Yes
Wet space: Yes
Addition: No
Conversion: No

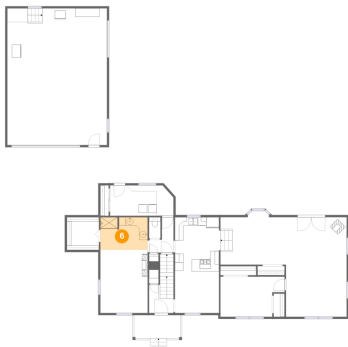
5 Floor 2 - Kitchen



Max Dimensions: 10'8" x 12'8"
Calculated Area: 132 sq. ft
Included: Yes

Heated: Yes
Finished: Yes
Enclosed: Yes
Contiguous: Yes
Permitted: Yes
Wet space: No
Addition: No
Conversion: No

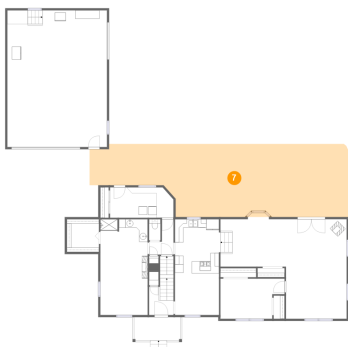
6 Floor 2 - Bath



Max Dimensions: 11'1" x 7'8"
Calculated Area: 84 sq. ft
Included: Yes

Heated: Yes
Finished: Yes
Enclosed: Yes
Contiguous: Yes
Permitted: Yes
Wet space: Yes
Addition: No
Conversion: No

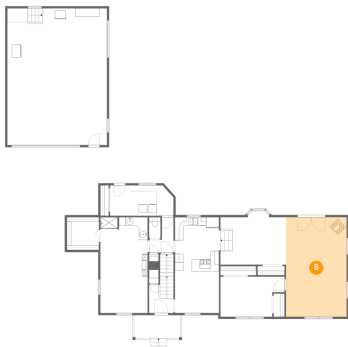
7 Floor 2 - Patio



Max Dimensions: 60'9" x 17'1"
Calculated Area: 887 sq. ft
Included: No

Heated: No
Finished: Yes
Enclosed: No
Contiguous: Yes
Permitted: Yes
Wet space: No
Addition: No
Conversion: No

8 Floor 2 - Living Room



Max Dimensions: 14'2" x 23'4"
Calculated Area: 331 sq. ft
Included: Yes

Heated: Yes
Finished: Yes
Enclosed: Yes
Contiguous: Yes
Permitted: Yes
Wet space: No
Addition: No
Conversion: No

615 Wright Street, Corry, Erie County, Pennsylvania, United States, 16407

9 Floor 2 - Foyer



Max Dimensions: 5'9" x 6'7"
Calculated Area: 61 sq. ft
Included: Yes

Heated: Yes
Finished: Yes
Enclosed: Yes
Contiguous: Yes
Permitted: Yes
Wet space: No
Addition: No
Conversion: No

10 Floor 2 - Bedroom



Max Dimensions: 15'0" x 9'5"
Calculated Area: 124 sq. ft
Included: Yes

Heated: Yes
Finished: Yes
Enclosed: Yes
Contiguous: Yes
Permitted: Yes
Wet space: No
Addition: No
Conversion: No

11 Floor 2 - Hall



Max Dimensions: 5'8" x 8'3"
Calculated Area: 32 sq. ft
Included: Yes

Heated: Yes
Finished: Yes
Enclosed: Yes
Contiguous: Yes
Permitted: Yes
Wet space: No
Addition: No
Conversion: No

615 Wright Street, Corry, Erie County, Pennsylvania, United States, 16407

12 Floor 2 - Breakfast Nook



Max Dimensions: 10'4" x 9'9"
Calculated Area: 100 sq. ft
Included: Yes

Heated: Yes
Finished: Yes
Enclosed: Yes
Contiguous: Yes
Permitted: Yes
Wet space: No
Addition: No
Conversion: No

13 Floor 2 - Porch



Max Dimensions: 10'10" x 5'6"
Calculated Area: 60 sq. ft
Included: No

Heated: No
Finished: Yes
Enclosed: No
Contiguous: Yes
Permitted: Yes
Wet space: No
Addition: No
Conversion: No

14 Floor 2 - Garage



Max Dimensions: 23'4" x 32'0"
Calculated Area: 746 sq. ft
Included: No

Heated: No
Finished: No
Enclosed: Yes
Contiguous: Yes
Permitted: Yes
Wet space: No
Addition: No
Conversion: No

15 Floor 2 - Primary Bedroom



Max Dimensions: 11'1" x 14'9"
Calculated Area: 163 sq. ft
Included: Yes

Heated: Yes
Finished: Yes
Enclosed: Yes
Contiguous: Yes
Permitted: Yes
Wet space: No
Addition: No
Conversion: No

16 Floor 2 - Laundry



Max Dimensions: 10'11" x 7'1"
Calculated Area: 102 sq. ft
Included: Yes

Heated: Yes
Finished: Yes
Enclosed: Yes
Contiguous: Yes
Permitted: Yes
Wet space: No
Addition: No
Conversion: No

17 Floor 2 - Dining Area



Max Dimensions: 15'4" x 11'1"
Calculated Area: 171 sq. ft
Included: Yes

Heated: Yes
Finished: Yes
Enclosed: Yes
Contiguous: Yes
Permitted: Yes
Wet space: No
Addition: No
Conversion: No

18 Floor 2 - W.I.C.



Max Dimensions: 7'6" x 7'8"
Calculated Area: 58 sq. ft
Included: Yes

Heated: Yes
Finished: Yes
Enclosed: Yes
Contiguous: Yes
Permitted: Yes
Wet space: No
Addition: No
Conversion: No

19 Floor 3 - Primary Bedroom



Max Dimensions: 11'0" x 14'5"
Calculated Area: 130 sq. ft
Included: No

Heated: Yes
Finished: Yes
Enclosed: Yes
Contiguous: Yes
Permitted: Yes
Wet space: No
Addition: No
Conversion: No

20 Floor 3 - W.I.C.



Max Dimensions: 6'2" x 8'11"
Calculated Area: 44 sq. ft
Included: Yes

Heated: Yes
Finished: Yes
Enclosed: Yes
Contiguous: Yes
Permitted: Yes
Wet space: No
Addition: No
Conversion: No

615 Wright Street, Corry, Erie County, Pennsylvania, United States, 16407

21 Floor 3 - Hall



Max Dimensions: 6'2" x 10'4"
Calculated Area: 64 sq. ft
Included: Yes

Heated: Yes
Finished: Yes
Enclosed: Yes
Contiguous: Yes
Permitted: Yes
Wet space: No
Addition: No
Conversion: No

22 Floor 3 - Bedroom



Max Dimensions: 8'10" x 7'3"
Calculated Area: 65 sq. ft
Included: Yes

Heated: Yes
Finished: Yes
Enclosed: Yes
Contiguous: Yes
Permitted: Yes
Wet space: No
Addition: No
Conversion: No

23 Floor 3 - Storage



Max Dimensions: 13'8" x 32'0"
Calculated Area: 437 sq. ft
Included: No

Heated: No
Finished: No
Enclosed: No
Contiguous: Yes
Permitted: Yes
Wet space: No
Addition: No
Conversion: No

615 Wright Street, Corry, Erie County, Pennsylvania, United States, 16407

24 Floor 3 - Bedroom



Max Dimensions: 10'8" x 12'0"
Calculated Area: 115 sq. ft
Included: Yes

Heated: Yes
Finished: Yes
Enclosed: Yes
Contiguous: Yes
Permitted: Yes
Wet space: No
Addition: No
Conversion: No

25 Floor 3 - Bath



Max Dimensions: 8'5" x 4'10"
Calculated Area: 41 sq. ft
Included: Yes

Heated: Yes
Finished: Yes
Enclosed: Yes
Contiguous: Yes
Permitted: Yes
Wet space: Yes
Addition: No
Conversion: No

26 Floor 3 - W.I.C.



Max Dimensions: 6'1" x 7'3"
Calculated Area: 16 sq. ft
Included: Yes

Heated: Yes
Finished: Yes
Enclosed: Yes
Contiguous: Yes
Permitted: Yes
Wet space: No
Addition: No
Conversion: No