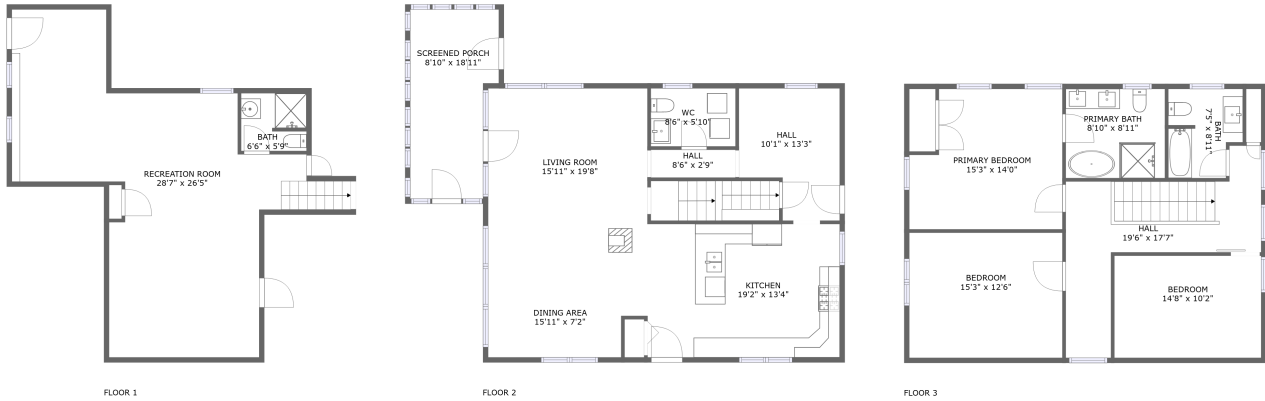


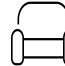
3300 Baldwin Road, Hinesburg, Chittenden County, Vermont, United States, 05461



Property Summary

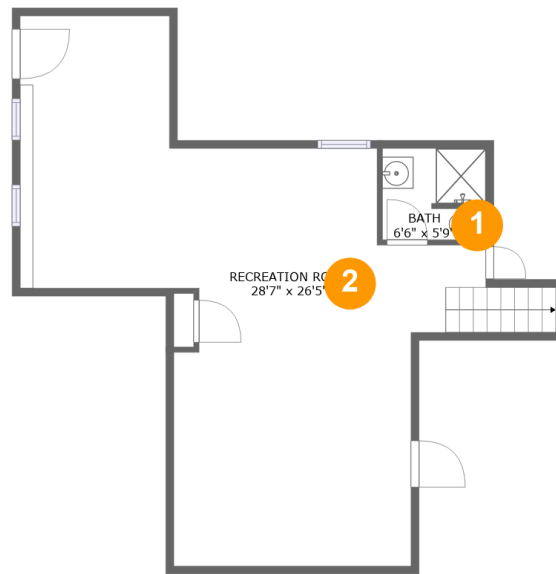
 **0** garages  **3** bedrooms  **3** bathrooms  **1** half baths

 **3** floors

 **2,604** Gross Living Area sqft

 **2,881** total sqft

3300 Baldwin Road, Hinesburg, Chittenden County, Vermont, United States, 05461



Room Dimensions

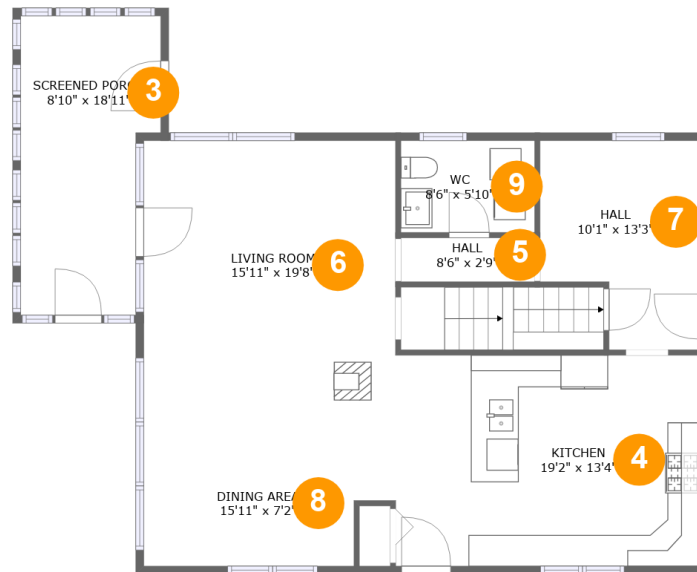
Floor 1

Total sqft: 697

Living area: 697

#	Room name	Dimensions	Area (sqft)	Counted as Living Area
1	Bath	6'6" x 5'9"	37 sq. ft	Yes
2	Recreation Room	28'7" x 26'5"	579 sq. ft	Yes

3300 Baldwin Road, Hinesburg, Chittenden County, Vermont, United States, 05461



Room Dimensions

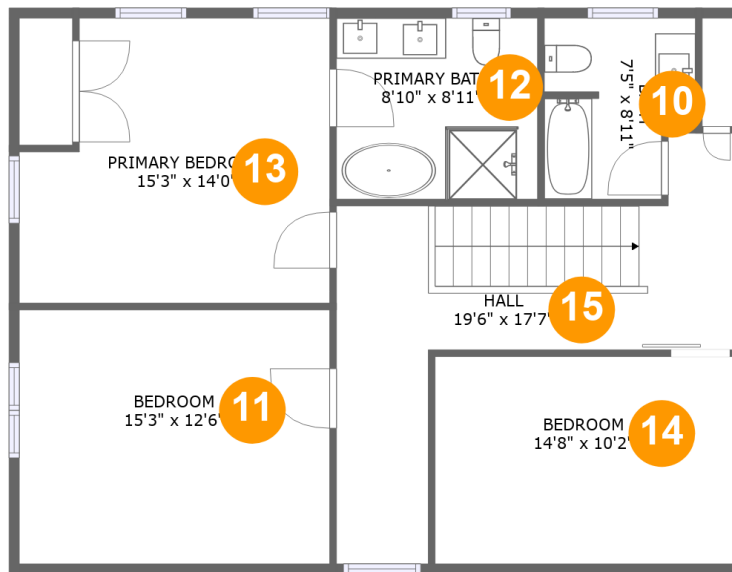
Floor 2

Total sqft: 1177

Living area: 1006

#	Room name	Dimensions	Area (sqft)	Counted as Living Area
3	Screened Porch	8'10" x 18'11"	149 sq. ft	No
4	Kitchen	19'2" x 13'4"	256 sq. ft	Yes
5	Hall	8'6" x 2'9"	24 sq. ft	Yes
6	Living Room	15'11" x 19'8"	313 sq. ft	Yes
7	Hall	10'1" x 13'3"	114 sq. ft	Yes
8	Dining Area	15'11" x 7'2"	103 sq. ft	Yes
9	Wc	8'6" x 5'10"	49 sq. ft	Yes

3300 Baldwin Road, Hinesburg, Chittenden County, Vermont, United States, 05461



Room Dimensions

Floor 3

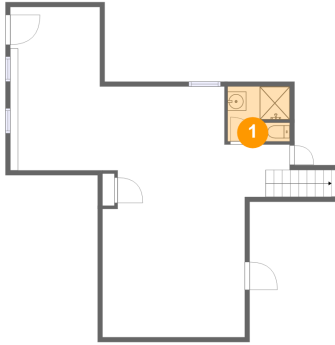
Total sqft: 1007

Living area: 901

#	Room name	Dimensions	Area (sqft)	Counted as Living Area
10	Bath	7'5" x 8'11"	59 sq. ft	Yes
11	Bedroom	15'3" x 12'6"	147 sq. ft	Yes
12	Primary Bath	8'10" x 8'11"	88 sq. ft	Yes
13	Primary Bedroom	15'3" x 14'0"	195 sq. ft	Yes
14	Bedroom	14'8" x 10'2"	107 sq. ft	Yes
15	Hall	19'6" x 17'7"	197 sq. ft	Yes

3300 Baldwin Road, Hinesburg, Chittenden County, Vermont, United States, 05461

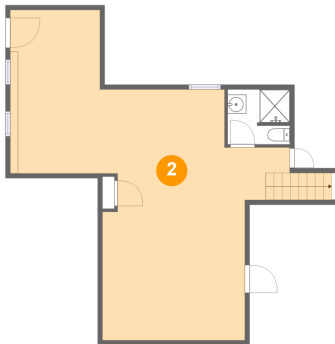
1 Floor 1 - Bath



Dimensions: 6'6" x 5'9"
Area: 37 sq. ft
Counted as Living Area:
Yes

Heated: Yes
Finished: Yes
Enclosed: Yes
Contiguous:
Yes
Permitted: Yes
Wet Space: Yes
Addition: No
Conversion: No

2 Floor 1 - Recreation Room



Dimensions: 28'7" x 26'5"
Area: 579 sq. ft
Counted as Living Area:
Yes

Heated: Yes
Finished: Yes
Enclosed: Yes
Contiguous:
Yes
Permitted: Yes
Wet Space: No
Addition: No
Conversion: No

3300 Baldwin Road, Hinesburg, Chittenden County, Vermont, United States, 05461

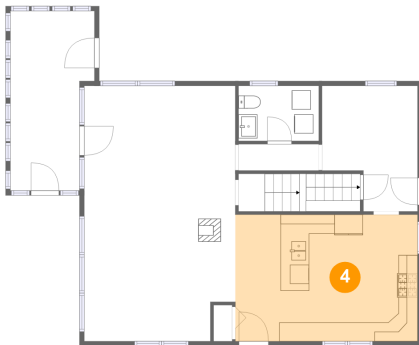
3 Floor 2 - Screened Porch



Dimensions: 8'10" x 18'11"
Area: 149 sq. ft
Counted as Living Area: No

Heated: No
Finished: Yes
Enclosed: No
Contiguous: Yes
Permitted: Yes
Wet Space: No
Addition: No
Conversion: No

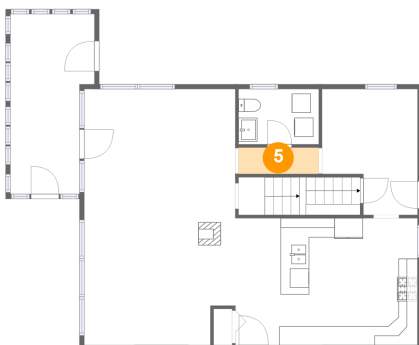
4 Floor 2 - Kitchen



Dimensions: 19'2" x 13'4"
Area: 256 sq. ft
Counted as Living Area: Yes

Heated: Yes
Finished: Yes
Enclosed: Yes
Contiguous: Yes
Permitted: Yes
Wet Space: No
Addition: No
Conversion: No

5 Floor 2 - Hall

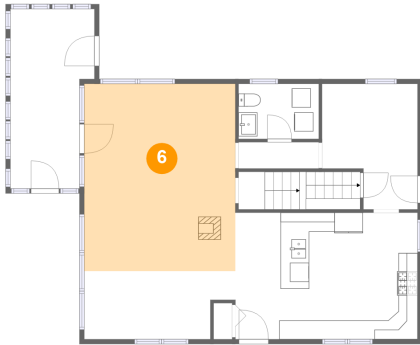


Dimensions: 8'6" x 2'9"
Area: 24 sq. ft
Counted as Living Area: Yes

Heated: Yes
Finished: Yes
Enclosed: Yes
Contiguous: Yes
Permitted: Yes
Wet Space: No
Addition: No
Conversion: No

3300 Baldwin Road, Hinesburg, Chittenden County, Vermont, United States, 05461

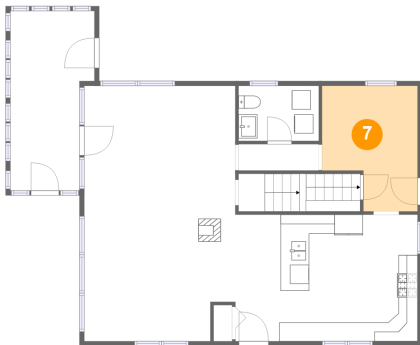
6 Floor 2 - Living Room



Dimensions: 15'11" x 19'8"
Area: 313 sq. ft
Counted as Living Area:
Yes

Heated: Yes
Finished: Yes
Enclosed: Yes
Contiguous:
Yes
Permitted: Yes
Wet Space: No
Addition: No
Conversion: No

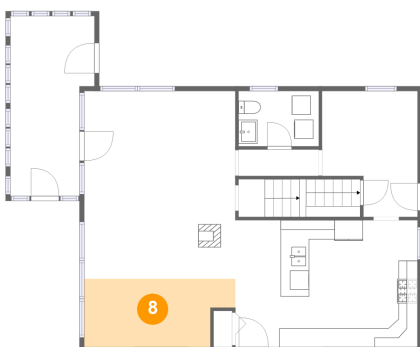
7 Floor 2 - Hall



Dimensions: 10'1" x 13'3"
Area: 114 sq. ft
Counted as Living Area:
Yes

Heated: Yes
Finished: Yes
Enclosed: Yes
Contiguous:
Yes
Permitted: Yes
Wet Space: No
Addition: No
Conversion: No

8 Floor 2 - Dining Area

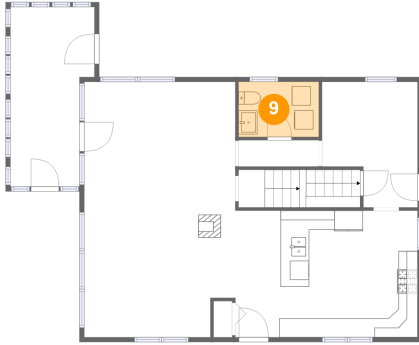


Dimensions: 15'11" x 7'2"
Area: 103 sq. ft
Counted as Living Area:
Yes

Heated: Yes
Finished: Yes
Enclosed: Yes
Contiguous:
Yes
Permitted: Yes
Wet Space: No
Addition: No
Conversion: No

3300 Baldwin Road, Hinesburg, Chittenden County, Vermont, United States, 05461

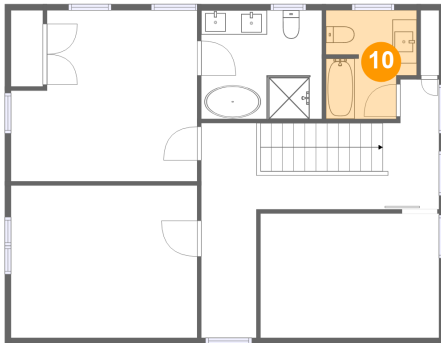
9 Floor 2 - Wc



Dimensions: 8'6" x 5'10"
Area: 49 sq. ft
Counted as Living Area:
Yes

Heated: Yes
Finished: Yes
Enclosed: Yes
Contiguous:
Yes
Permitted: Yes
Wet Space: Yes
Addition: No
Conversion: No

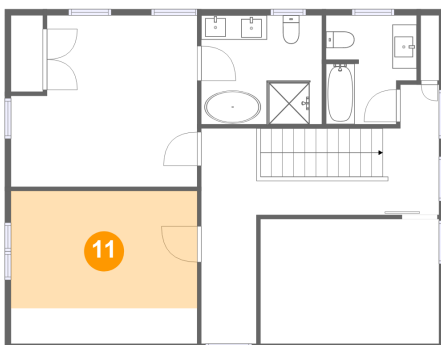
10 Floor 3 - Bath



Dimensions: 7'5" x 8'11"
Area: 59 sq. ft
Counted as Living Area:
Yes

Heated: Yes
Finished: Yes
Enclosed: Yes
Contiguous:
Yes
Permitted: Yes
Wet Space: Yes
Addition: No
Conversion: No

11 Floor 3 - Bedroom

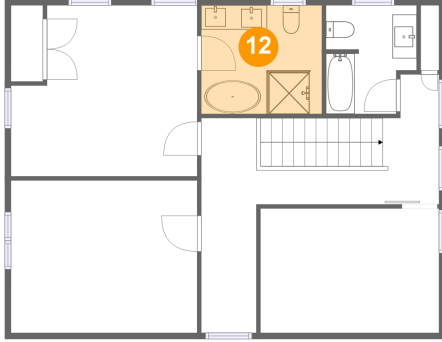


Dimensions: 15'3" x 12'6"
Area: 147 sq. ft
Counted as Living Area:
Yes

Heated: Yes
Finished: Yes
Enclosed: Yes
Contiguous:
Yes
Permitted: Yes
Wet Space: No
Addition: No
Conversion: No

3300 Baldwin Road, Hinesburg, Chittenden County, Vermont, United States, 05461

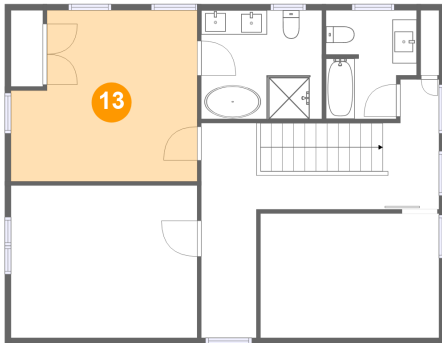
12 Floor 3 - Primary Bath



Dimensions: 8'10" x 8'11"
Area: 88 sq. ft
Counted as Living Area:
Yes

Heated: Yes
Finished: Yes
Enclosed: Yes
Contiguous:
Yes
Permitted: Yes
Wet Space: Yes
Addition: No
Conversion: No

13 Floor 3 - Primary Bedroom



Dimensions: 15'3" x 14'0"
Area: 195 sq. ft
Counted as Living Area:
Yes

Heated: Yes
Finished: Yes
Enclosed: Yes
Contiguous:
Yes
Permitted: Yes
Wet Space: No
Addition: No
Conversion: No

14 Floor 3 - Bedroom

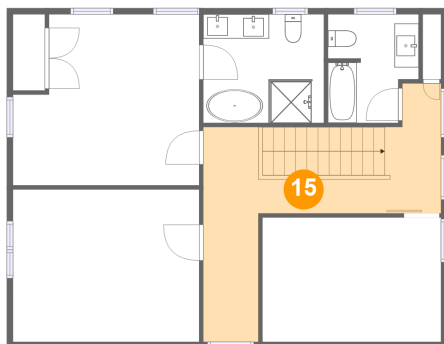


Dimensions: 14'8" x 10'2"
Area: 107 sq. ft
Counted as Living Area:
Yes

Heated: Yes
Finished: Yes
Enclosed: Yes
Contiguous:
Yes
Permitted: Yes
Wet Space: No
Addition: No
Conversion: No

3300 Baldwin Road, Hinesburg, Chittenden County, Vermont, United States, 05461

15 Floor 3 - Hall



Dimensions: 19'6" x 17'7"
Area: 197 sq. ft
Counted as Living Area:
Yes

Heated: Yes
Finished: Yes
Enclosed: Yes
Contiguous:
Yes
Permitted: Yes
Wet Space: No
Addition: No
Conversion: No