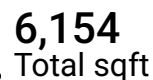
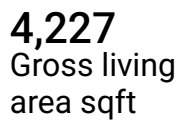
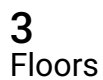
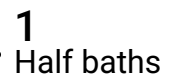
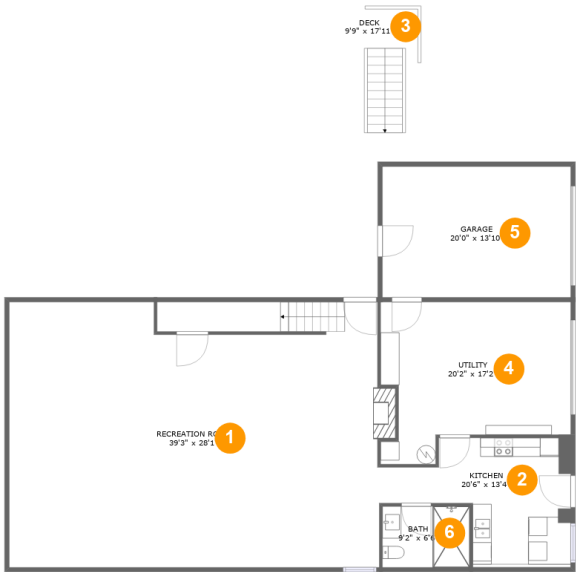


**3680 Hales Ford Road, Moneta, Bedford County, Virginia, United States, 24121**



Home report

3680 Hales Ford Road, Moneta, Bedford County, Virginia, United States, 24121



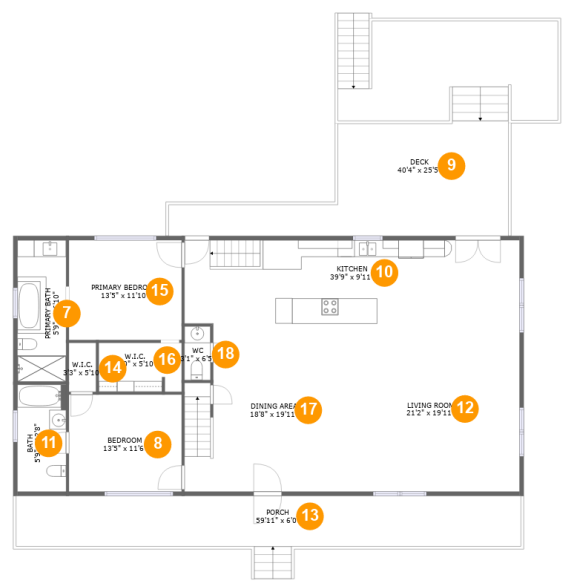
Room dimensions

Floor 1 Total sqft: 2174    Living area: 1457

#		Max Dimensions	sqft	Included
1	Recreation Room	39'3" x 28'1"	1069 sq. ft	Yes
2	Kitchen	20'6" x 13'4"	186 sq. ft	Yes
3	Deck	9'9" x 17'11"	107 sq. ft	No
4	Utility	20'2" x 17'2"	291 sq. ft	No
5	Garage	20'0" x 13'10"	277 sq. ft	No
6	Bath	9'2" x 6'6"	60 sq. ft	Yes

Home report

3680 Hales Ford Road, Moneta, Bedford County, Virginia, United States, 24121



Room dimensions

Floor 2

Total sqft: 2856

Living area: 1867

#		Max Dimensions	sqft	Included
7	Primary Bath	5'9" x 16'10"	97 sq. ft	Yes
8	Bedroom	13'5" x 11'6"	154 sq. ft	Yes
9	Deck	40'4" x 25'5"	631 sq. ft	No
10	Kitchen	39'9" x 9'11"	393 sq. ft	Yes
11	Bath	5'9" x 12'8"	73 sq. ft	Yes
12	Living Room	21'2" x 19'11"	421 sq. ft	Yes
13	Porch	59'11" x 6'0"	358 sq. ft	No
14	W.I.C.	3'3" x 5'10"	19 sq. ft	Yes
15	Primary Bedroom	13'5" x 11'10"	158 sq. ft	Yes
16	W.I.C.	9'10" x 5'10"	56 sq. ft	Yes
17	Dining Area	18'8" x 19'11"	346 sq. ft	Yes

Home report

3680 Hales Ford Road, Moneta, Bedford County, Virginia, United States, 24121

#		Max Dimensions	sqft	Included
18	WC	3'1" x 6'5"	20 sq. ft	Yes

Home report

3680 Hales Ford Road, Moneta, Bedford County, Virginia, United States, 24121



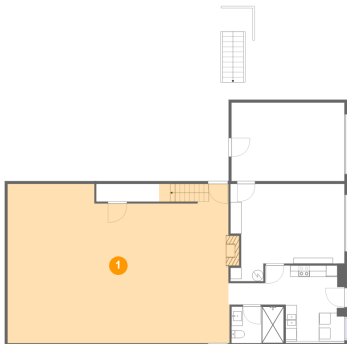
Room dimensions

Floor 3 Total sqft: 1124    Living area: 903

#		Max Dimensions	sqft	Included
19	Bedroom	19'6" x 16'3"	275 sq. ft	Yes
20	Bedroom	15'4" x 16'3"	218 sq. ft	Yes
21	Attic	24'1" x 7'5"	179 sq. ft	No
22	Bonus Room	24'1" x 16'3"	321 sq. ft	Yes

3680 Hales Ford Road, Moneta, Bedford County, Virginia, United States, 24121

1 Floor 1 - Recreation Room



Max Dimensions: 39'3" x 28'1"  
Calculated Area: 1069 sq. ft  
Included: Yes

Heated: Yes  
Finished: Yes  
Enclosed: Yes  
Contiguous: Yes  
Permitted: Yes  
Wet space: No  
Addition: No  
Conversion: No

2 Floor 1 - Kitchen

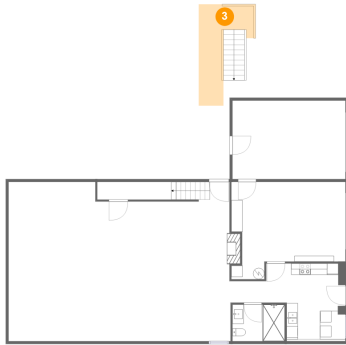


Max Dimensions: 20'6" x 13'4"  
Calculated Area: 186 sq. ft  
Included: Yes

Heated: Yes  
Finished: Yes  
Enclosed: Yes  
Contiguous: Yes  
Permitted: Yes  
Wet space: No  
Addition: No  
Conversion: No

3680 Hales Ford Road, Moneta, Bedford County, Virginia, United States, 24121

### 3 Floor 1 - Deck



Max Dimensions: 9'9" x 17'11"  
Calculated Area: 107 sq. ft  
Included: No

Heated: No  
Finished: Yes  
Enclosed: No  
Contiguous: Yes  
Permitted: Yes  
Wet space: No  
Addition: No  
Conversion: No

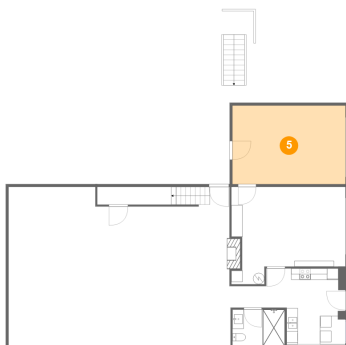
### 4 Floor 1 - Utility



Max Dimensions: 20'2" x 17'2"  
Calculated Area: 291 sq. ft  
Included: No

Heated: Yes  
Finished: No  
Enclosed: Yes  
Contiguous: Yes  
Permitted: Yes  
Wet space: No  
Addition: No  
Conversion: No

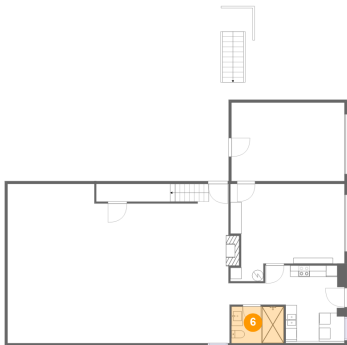
### 5 Floor 1 - Garage



Max Dimensions: 20'0" x 13'10"  
Calculated Area: 277 sq. ft  
Included: No

Heated: No  
Finished: No  
Enclosed: Yes  
Contiguous: Yes  
Permitted: Yes  
Wet space: No  
Addition: No  
Conversion: No

6 Floor 1 - Bath



Max Dimensions: 9'2" x 6'6"  
Calculated Area: 60 sq. ft  
Included: Yes

Heated: Yes  
Finished: Yes  
Enclosed: Yes  
Contiguous: Yes  
Permitted: Yes  
Wet space: Yes  
Addition: No  
Conversion: No

7 Floor 2 - Primary Bath



Max Dimensions: 5'9" x 16'10"  
Calculated Area: 97 sq. ft  
Included: Yes

Heated: Yes  
Finished: Yes  
Enclosed: Yes  
Contiguous: Yes  
Permitted: Yes  
Wet space: Yes  
Addition: No  
Conversion: No

8 Floor 2 - Bedroom



Max Dimensions: 13'5" x 11'6"  
Calculated Area: 154 sq. ft  
Included: Yes

Heated: Yes  
Finished: Yes  
Enclosed: Yes  
Contiguous: Yes  
Permitted: Yes  
Wet space: No  
Addition: No  
Conversion: No



9 Floor 2 - Deck



Max Dimensions: 40'4" x 25'5"  
Calculated Area: 631 sq. ft  
Included: No

Heated: No  
Finished: Yes  
Enclosed: No  
Contiguous: Yes  
Permitted: Yes  
Wet space: No  
Addition: No  
Conversion: No

10 Floor 2 - Kitchen



Max Dimensions: 39'9" x 9'11"  
Calculated Area: 393 sq. ft  
Included: Yes

Heated: Yes  
Finished: Yes  
Enclosed: Yes  
Contiguous: Yes  
Permitted: Yes  
Wet space: No  
Addition: No  
Conversion: No

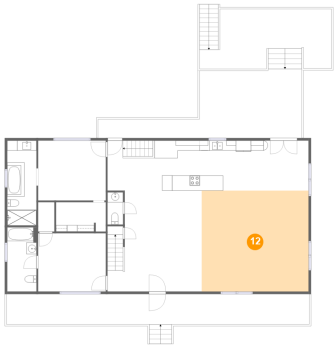
11 Floor 2 - Bath



Max Dimensions: 5'9" x 12'8"  
Calculated Area: 73 sq. ft  
Included: Yes

Heated: Yes  
Finished: Yes  
Enclosed: Yes  
Contiguous: Yes  
Permitted: Yes  
Wet space: Yes  
Addition: No  
Conversion: No

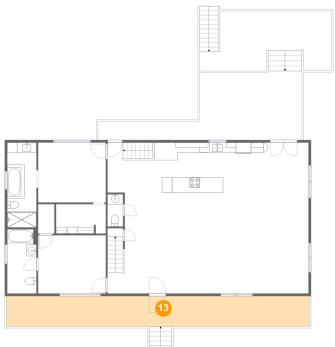
12 Floor 2 - Living Room



Max Dimensions: 21'2" x 19'11"  
Calculated Area: 421 sq. ft  
Included: Yes

Heated: Yes  
Finished: Yes  
Enclosed: Yes  
Contiguous: Yes  
Permitted: Yes  
Wet space: No  
Addition: No  
Conversion: No

13 Floor 2 - Porch



Max Dimensions: 59'11" x 6'0"  
Calculated Area: 358 sq. ft  
Included: No

Heated: No  
Finished: Yes  
Enclosed: No  
Contiguous: Yes  
Permitted: Yes  
Wet space: No  
Addition: No  
Conversion: No

14 Floor 2 - W.I.C.



Max Dimensions: 3'3" x 5'10"  
Calculated Area: 19 sq. ft  
Included: Yes

Heated: Yes  
Finished: Yes  
Enclosed: Yes  
Contiguous: Yes  
Permitted: Yes  
Wet space: No  
Addition: No  
Conversion: No

15 Floor 2 - Primary Bedroom



Max Dimensions: 13'5" x 11'10"  
Calculated Area: 158 sq. ft  
Included: Yes

Heated: Yes  
Finished: Yes  
Enclosed: Yes  
Contiguous: Yes  
Permitted: Yes  
Wet space: No  
Addition: No  
Conversion: No

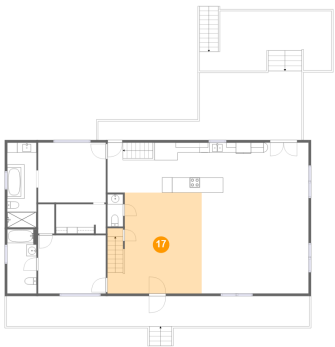
16 Floor 2 - W.I.C.



Max Dimensions: 9'10" x 5'10"  
Calculated Area: 56 sq. ft  
Included: Yes

Heated: Yes  
Finished: Yes  
Enclosed: Yes  
Contiguous: Yes  
Permitted: Yes  
Wet space: No  
Addition: No  
Conversion: No

17 Floor 2 - Dining Area



Max Dimensions: 18'8" x 19'11"  
Calculated Area: 346 sq. ft  
Included: Yes

Heated: Yes  
Finished: Yes  
Enclosed: Yes  
Contiguous: Yes  
Permitted: Yes  
Wet space: No  
Addition: No  
Conversion: No

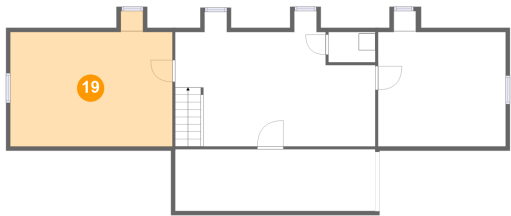
18 Floor 2 - WC



Max Dimensions: 3'1" x 6'5"  
Calculated Area: 20 sq. ft  
Included: Yes

Heated: Yes  
Finished: Yes  
Enclosed: Yes  
Contiguous: Yes  
Permitted: Yes  
Wet space: Yes  
Addition: No  
Conversion: No

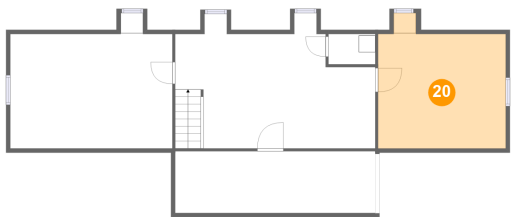
19 Floor 3 - Bedroom



Max Dimensions: 19'6" x 16'3"  
Calculated Area: 275 sq. ft  
Included: Yes

Heated: Yes  
Finished: Yes  
Enclosed: Yes  
Contiguous: Yes  
Permitted: Yes  
Wet space: No  
Addition: No  
Conversion: No

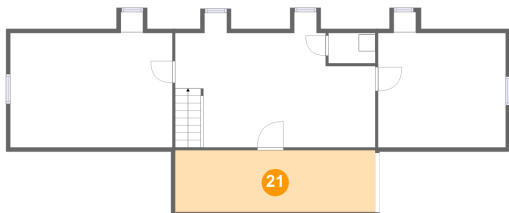
20 Floor 3 - Bedroom



Max Dimensions: 15'4" x 16'3"  
Calculated Area: 218 sq. ft  
Included: Yes

Heated: Yes  
Finished: Yes  
Enclosed: Yes  
Contiguous: Yes  
Permitted: Yes  
Wet space: No  
Addition: No  
Conversion: No

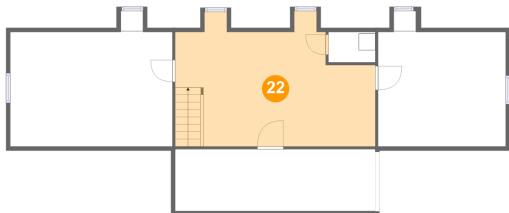
21 Floor 3 - Attic



Max Dimensions: 24'1" x 7'5"  
Calculated Area: 179 sq. ft  
Included: No

Heated: No  
Finished: No  
Enclosed: Yes  
Contiguous: Yes  
Permitted: Yes  
Wet space: No  
Addition: No  
Conversion: No

22 Floor 3 - Bonus Room



Max Dimensions: 24'1" x 16'3"  
Calculated Area: 321 sq. ft  
Included: Yes

Heated: Yes  
Finished: Yes  
Enclosed: Yes  
Contiguous: Yes  
Permitted: Yes  
Wet space: No  
Addition: No  
Conversion: No