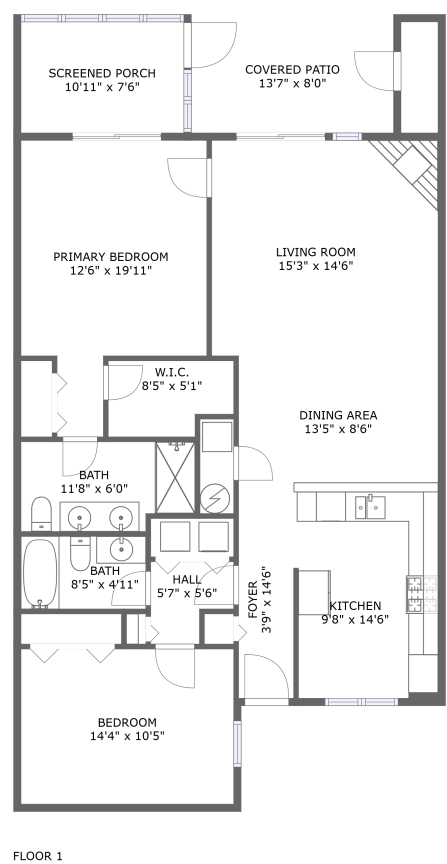


Home report

1175 Mariners Way, Huddleston, Bedford County, Virginia,
United States, 24104, 58




Total Area: 1256 sq. ft


Floor 1: 1256 sq. ft

Excluded: Outdoor Porch Screen 95 sq. ft, Outdoor Patio Covered 108 sq. ft

Property summary

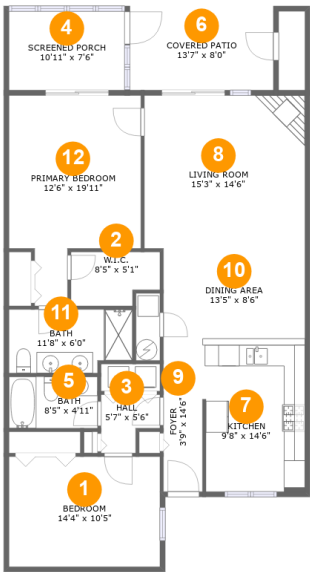
 1 Floors

 2 Bedrooms

 2 Bathrooms

Home report

1175 Mariners Way, Huddleston, Bedford County, Virginia,
United States, 24104, 58



Room dimensions

Floor 1 Total:1256sqft Excluded: 203sqft

#		Max Dimensions	sqft	Included
1	Bedroom	14'4" x 10'5"	149 sq. ft	Yes
2	W.I.C.	8'5" x 5'1"	39 sq. ft	Yes
3	Hall	5'7" x 5'6"	25 sq. ft	Yes
4	Screened Porch	10'11" x 7'6"	82 sq. ft	No
5	Bath	8'5" x 4'11"	41 sq. ft	Yes
6	Covered Patio	13'7" x 8'0"	108 sq. ft	No
7	Kitchen	9'8" x 14'6"	138 sq. ft	Yes
8	Living Room	15'3" x 14'6"	221 sq. ft	Yes
9	Foyer	3'9" x 14'6"	54 sq. ft	Yes
10	Dining Area	13'5" x 8'6"	115 sq. ft	Yes
11	Bath	11'8" x 6'0"	67 sq. ft	Yes

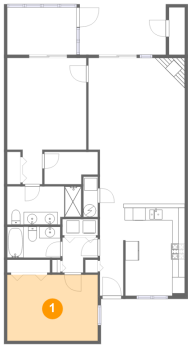
Home report

1175 Mariners Way, Huddleston, Bedford County, Virginia,
United States, 24104, 58

#		Max Dimensions	sqft	Included
12	Primary Bedroom	12'6" x 19'11"	198 sq. ft	Yes

1175 Mariners Way, Huddleston, Bedford County, Virginia,
United States, 24104, 58

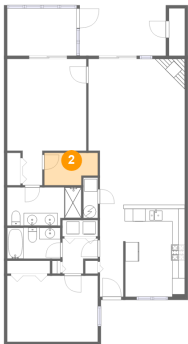
1 Floor 1 - Bedroom



Max Dimensions: 14'4" x 10'5"
Calculated Area: 149 sq. ft
Included: Yes

Heated: Yes
Finished: Yes
Enclosed: Yes
Contiguous: Yes
Permitted: Yes
Wet space: No
Addition: No
Conversion: No

2 Floor 1 - W.I.C.

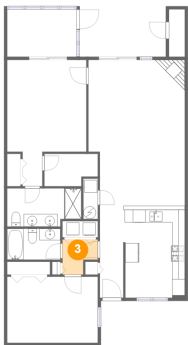


Max Dimensions: 8'5" x 5'1"
Calculated Area: 39 sq. ft
Included: Yes

Heated: Yes
Finished: Yes
Enclosed: Yes
Contiguous: Yes
Permitted: Yes
Wet space: No
Addition: No
Conversion: No

1175 Mariners Way, Huddleston, Bedford County, Virginia,
United States, 24104, 58

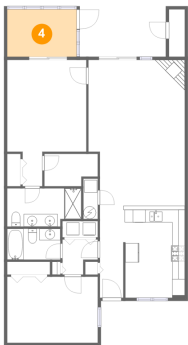
3 Floor 1 - Hall



Max Dimensions: 5'7" x 5'6"
Calculated Area: 25 sq. ft
Included: Yes

Heated: Yes
Finished: Yes
Enclosed: Yes
Contiguous: Yes
Permitted: Yes
Wet space: No
Addition: No
Conversion: No

4 Floor 1 - Screened Porch



Max Dimensions: 10'11" x 7'6"
Calculated Area: 82 sq. ft
Included: No

Heated: No
Finished: Yes
Enclosed: No
Contiguous: Yes
Permitted: Yes
Wet space: No
Addition: No
Conversion: No

5 Floor 1 - Bath

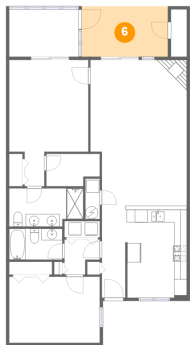


Max Dimensions: 8'5" x 4'11"
Calculated Area: 41 sq. ft
Included: Yes

Heated: Yes
Finished: Yes
Enclosed: Yes
Contiguous: Yes
Permitted: Yes
Wet space: Yes
Addition: No
Conversion: No

1175 Mariners Way, Huddleston, Bedford County, Virginia,
United States, 24104, 58

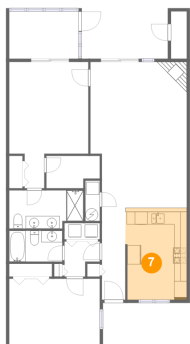
6 Floor 1 - Covered Patio



Max Dimensions: 13'7" x 8'0"
Calculated Area: 108 sq. ft
Included: No

Heated: No
Finished: Yes
Enclosed: No
Contiguous: Yes
Permitted: Yes
Wet space: No
Addition: No
Conversion: No

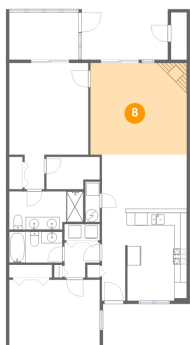
7 Floor 1 - Kitchen



Max Dimensions: 9'8" x 14'6"
Calculated Area: 138 sq. ft
Included: Yes

Heated: Yes
Finished: Yes
Enclosed: Yes
Contiguous: Yes
Permitted: Yes
Wet space: No
Addition: No
Conversion: No

8 Floor 1 - Living Room

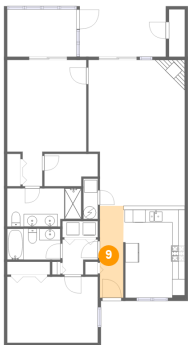


Max Dimensions: 15'3" x 14'6"
Calculated Area: 221 sq. ft
Included: Yes

Heated: Yes
Finished: Yes
Enclosed: Yes
Contiguous: Yes
Permitted: Yes
Wet space: No
Addition: No
Conversion: No

1175 Mariners Way, Huddleston, Bedford County, Virginia,
United States, 24104, 58

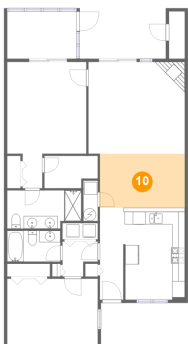
9 Floor 1 - Foyer



Max Dimensions: 3'9" x 14'6"
Calculated Area: 54 sq. ft
Included: Yes

Heated: Yes
Finished: Yes
Enclosed: Yes
Contiguous: Yes
Permitted: Yes
Wet space: No
Addition: No
Conversion: No

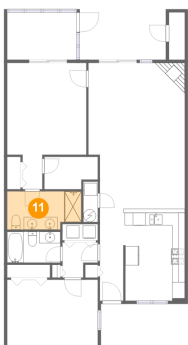
10 Floor 1 - Dining Area



Max Dimensions: 13'5" x 8'6"
Calculated Area: 115 sq. ft
Included: Yes

Heated: Yes
Finished: Yes
Enclosed: Yes
Contiguous: Yes
Permitted: Yes
Wet space: No
Addition: No
Conversion: No

11 Floor 1 - Bath

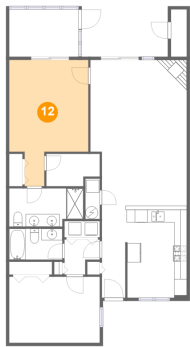


Max Dimensions: 11'8" x 6'0"
Calculated Area: 67 sq. ft
Included: Yes

Heated: Yes
Finished: Yes
Enclosed: Yes
Contiguous: Yes
Permitted: Yes
Wet space: Yes
Addition: No
Conversion: No

1175 Mariners Way, Huddleston, Bedford County, Virginia,
United States, 24104, 58

12 Floor 1 - Primary Bedroom



Max Dimensions: 12'6" x 19'11"
Calculated Area: 198 sq. ft
Included: Yes

Heated: Yes
Finished: Yes
Enclosed: Yes
Contiguous: Yes
Permitted: Yes
Wet space: No
Addition: No
Conversion: No