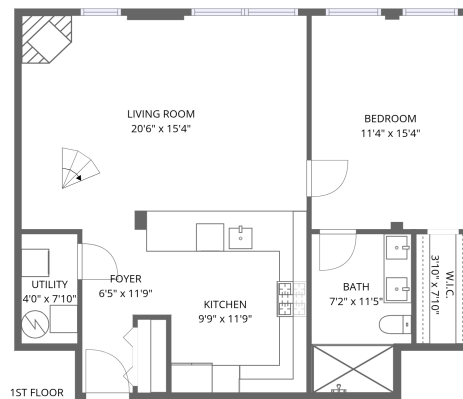
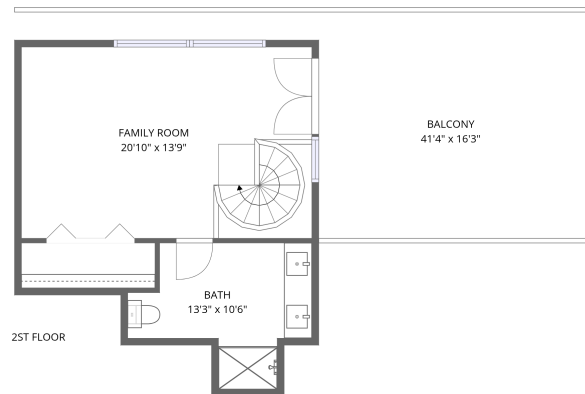


## Home data report

2250 West Ohio Street, Chicago, Illinois 60612, United States, 209

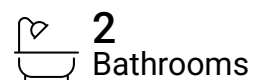


**Total Area: 1266 sq. ft**

Basement: 840 sq. ft, 1st Floor: 426 sq. ft

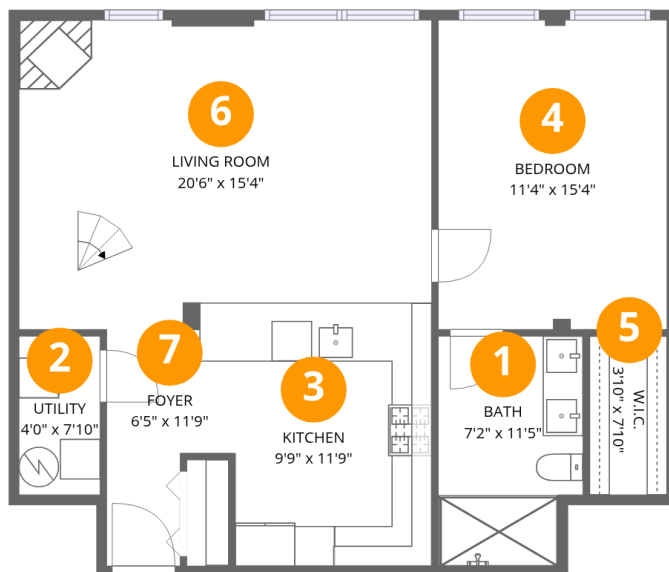
Excluded: Balcony 361 sq. ft, Walls: 0 sq. ft

## Property summary



# Home data report

## 2250 West Ohio Street, Chicago, Illinois 60612, United States, 209



### Room dimensions

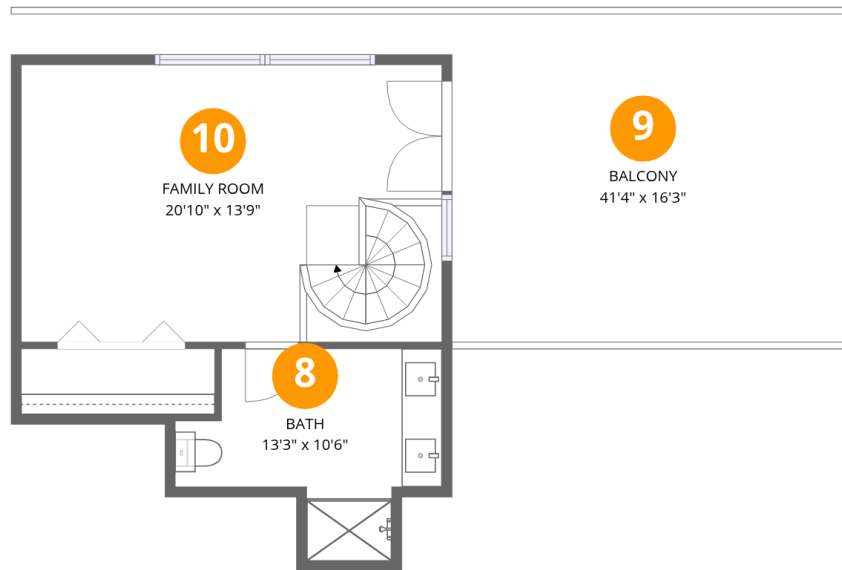
Floor 1 Below grade

Total:840sqft Excluded: 0sqft

#		Dimensions	sqft	Counted as living area
1	Bath	7'2" x 11'5"	78 sq. ft	Yes
2	Utility	4'0" x 7'10"	32 sq. ft	Yes
3	Kitchen	9'9" x 11'9"	115 sq. ft	Yes
4	Bedroom	11'4" x 15'4"	175 sq. ft	Yes
5	W.I.C.	3'10" x 7'10"	30 sq. ft	Yes
6	Living Room	20'6" x 15'4"	316 sq. ft	Yes
7	Foyer	6'5" x 11'9"	60 sq. ft	Yes

Home data report

2250 West Ohio Street, Chicago, Illinois 60612, United States, 209



### Room dimensions

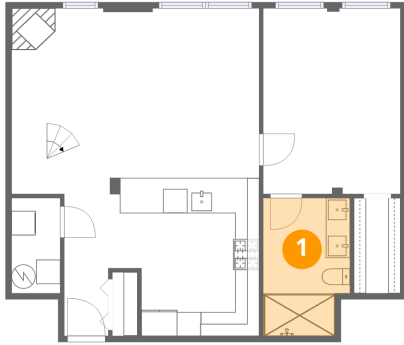
Floor 2

Total:426sqft

Excluded: 361sqft

#		Dimensions	sqft	Counted as living area
8	Bath	13'3" x 10'6"	98 sq. ft	Yes
9	Balcony	41'4" x 16'3"	361 sq. ft	No
10	Family Room	20'10" x 13'9"	288 sq. ft	Yes

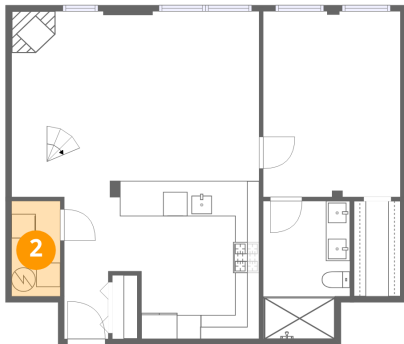
## 1 Floor 1 - Bath



Dimensions: 7'2" x 11'5"  
Area: 78 sq. ft  
Counted as living area: Yes

Heated: Yes  
Finished: Yes  
Enclosed: Yes  
Contiguous: Yes  
Permitted: Yes  
Wet space: Yes  
Addition: No  
Conversion: No

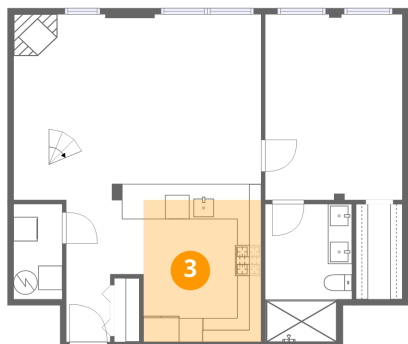
## 2 Floor 1 - Utility



Dimensions: 4'0" x 7'10"  
Area: 32 sq. ft  
Counted as living area: Yes

Heated: Yes  
Finished: Yes  
Enclosed: Yes  
Contiguous: Yes  
Permitted: Yes  
Wet space: No  
Addition: No  
Conversion: No

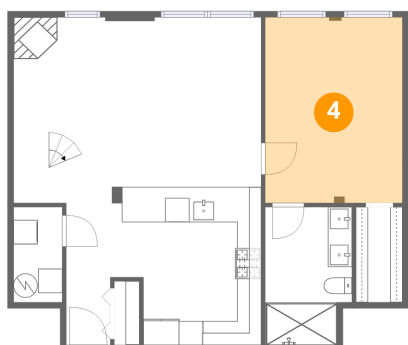
### 3 Floor 1 - Kitchen



Dimensions: 9'9" x 11'9"  
Area: 115 sq. ft  
Counted as living area: Yes

Heated: Yes  
Finished: Yes  
Enclosed: Yes  
Contiguous: Yes  
Permitted: Yes  
Wet space: No  
Addition: No  
Conversion: No

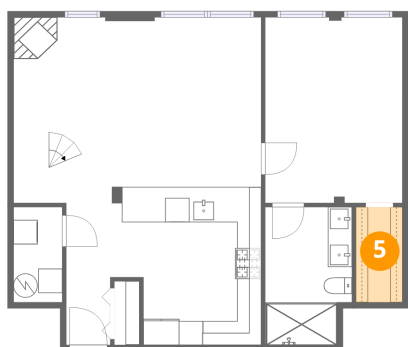
### 4 Floor 1 - Bedroom



Dimensions: 11'4" x 15'4"  
Area: 175 sq. ft  
Counted as living area: Yes

Heated: Yes  
Finished: Yes  
Enclosed: Yes  
Contiguous: Yes  
Permitted: Yes  
Wet space: No  
Addition: No  
Conversion: No

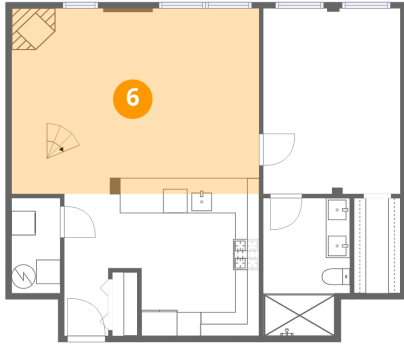
### 5 Floor 1 - W.I.C.



Dimensions: 3'10" x 7'10"  
Area: 30 sq. ft  
Counted as living area: Yes

Heated: Yes  
Finished: Yes  
Enclosed: Yes  
Contiguous: Yes  
Permitted: Yes  
Wet space: No  
Addition: No  
Conversion: No

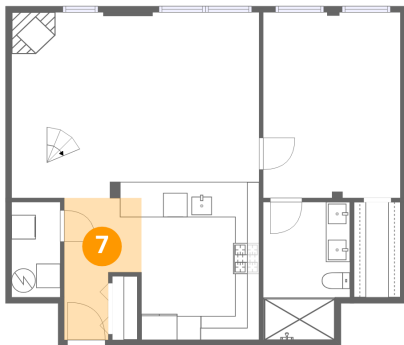
## 6 Floor 1 - Living Room



Dimensions: 20'6" x 15'4"  
Area: 316 sq. ft  
Counted as living area: Yes

Heated: Yes  
Finished: Yes  
Enclosed: Yes  
Contiguous: Yes  
Permitted: Yes  
Wet space: No  
Addition: No  
Conversion: No

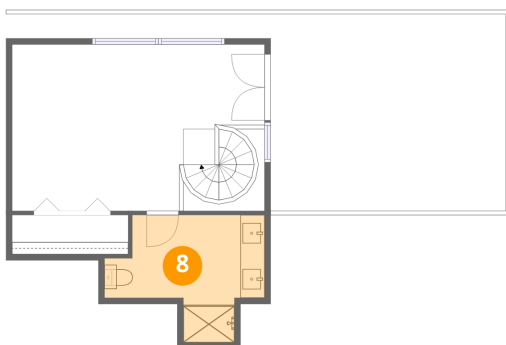
## 7 Floor 1 - Foyer



Dimensions: 6'5" x 11'9"  
Area: 60 sq. ft  
Counted as living area: Yes

Heated: Yes  
Finished: Yes  
Enclosed: Yes  
Contiguous: Yes  
Permitted: Yes  
Wet space: No  
Addition: No  
Conversion: No

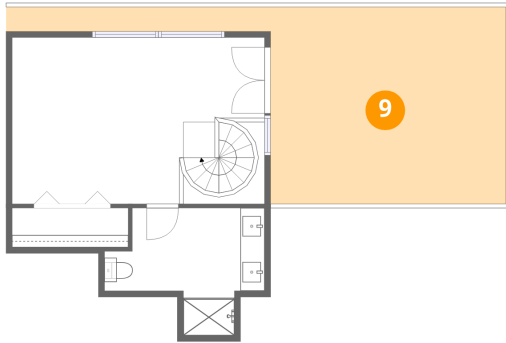
## 8 Floor 2 - Bath



Dimensions: 13'3" x 10'6"  
Area: 98 sq. ft  
Counted as living area: Yes

Heated: Yes  
Finished: Yes  
Enclosed: Yes  
Contiguous: Yes  
Permitted: Yes  
Wet space: Yes  
Addition: No  
Conversion: No

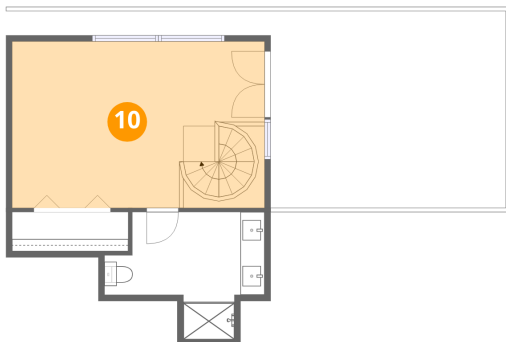
## 9 Floor 2 - Balcony



Dimensions: 41'4" x 16'3"  
Area: 361 sq. ft  
Counted as living area: No

Heated: No  
Finished: No  
Enclosed: No  
Contiguous: Yes  
Permitted: Yes  
Wet space: No  
Addition: No  
Conversion: No

## 10 Floor 2 - Family Room



Dimensions: 20'10" x 13'9"  
Area: 288 sq. ft  
Counted as living area: Yes

Heated: Yes  
Finished: Yes  
Enclosed: Yes  
Contiguous: Yes  
Permitted: Yes  
Wet space: No  
Addition: No  
Conversion: No