


4037 North 155th Drive, Pebblecreek, Goodyear, Maricopa County, Arizona, United States, 85395



Property summary

 **1** Garages

 **2** Bedrooms

 **2** Bathrooms

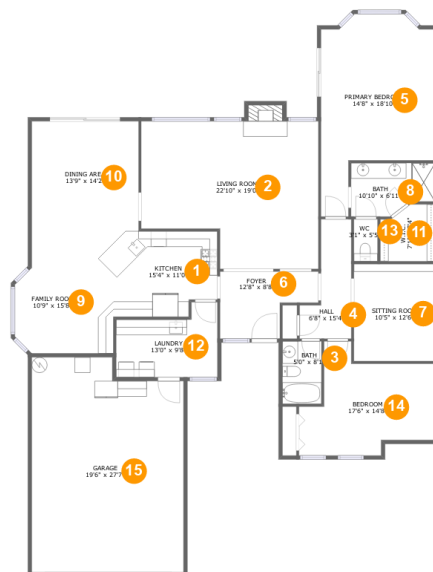
 **0** Half baths

 **1** Floors

 **2,140**
Gross living
area sqft

 **2,699**
Total sqft

4037 North 155th Drive, Pebblecreek, Goodyear, Maricopa County, Arizona, United States, 85395



Room dimensions

Floor 1

Total sqft: 2699 Living area: 2140

#		Dimensions	sqft	Counted as living area
1	Kitchen	15'4" x 11'0"	170 sq. ft	Yes
2	Living Room	22'10" x 19'0"	389 sq. ft	Yes
3	Bath	5'0" x 8'1"	40 sq. ft	Yes
4	Hall	6'8" x 15'4"	72 sq. ft	Yes
5	Bedroom	14'8" x 18'10"	290 sq. ft	Yes
6	Entry	12'8" x 8'8"	88 sq. ft	Yes
7	Living Room	10'5" x 12'6"	131 sq. ft	Yes
8	Bath	10'10" x 6'11"	66 sq. ft	Yes
9	Living Room	10'9" x 15'8"	154 sq. ft	Yes
10	Dining Room	13'9" x 14'2"	194 sq. ft	Yes
11	Cl	7'1" x 7'4"	47 sq. ft	Yes

Scan captured on Fri, 17 Jan 2025 00:18:00 GMT

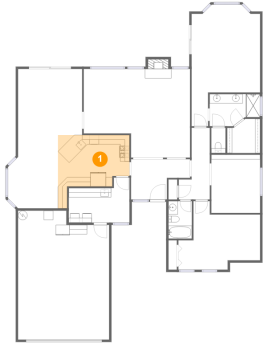
Information is calculated by Cubicasa technology deemed highly reliable but not guaranteed.

**4037 North 155th Drive, Pebblecreek, Goodyear,
Maricopa County, Arizona, United States, 85395**

#		Dimensions	sqft	Counted as living area
12	Utility	13'0" x 9'8"	104 sq. ft	Yes
13	Bath	3'1" x 5'5"	16 sq. ft	Yes
14	Bedroom	17'6" x 14'8"	185 sq. ft	Yes
15	Garage	19'6" x 27'7"	511 sq. ft	No

4037 North 155th Drive, Pebblecreek, Goodyear, Maricopa County, Arizona, United States, 85395

1 Floor 1 - Kitchen



Dimensions: 15'4" x 11'0"
Area: 170 sq. ft
Counted as living area: Yes

Heated: Yes
Finished: Yes
Enclosed: Yes
Contiguous: Yes
Permitted: Yes
Wet space: No
Addition: No
Conversion: No

2 Floor 1 - Living Room



Dimensions: 22'10" x 19'0"
Area: 389 sq. ft
Counted as living area: Yes

Heated: Yes
Finished: Yes
Enclosed: Yes
Contiguous: Yes
Permitted: Yes
Wet space: No
Addition: No
Conversion: No

4037 North 155th Drive, Pebblecreek, Goodyear, Maricopa County, Arizona, United States, 85395

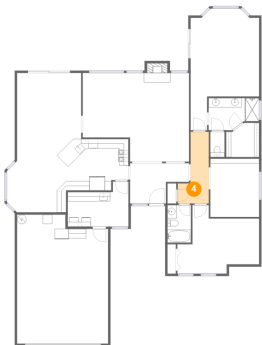
3 Floor 1 - Bath



Dimensions: 5'0" x 8'1"
Area: 40 sq. ft
Counted as living area: Yes

Heated: Yes
Finished: Yes
Enclosed: Yes
Contiguous: Yes
Permitted: Yes
Wet space: Yes
Addition: No
Conversion: No

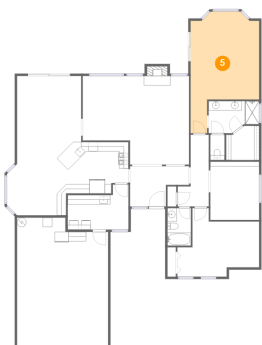
4 Floor 1 - Hall



Dimensions: 6'8" x 15'4"
Area: 72 sq. ft
Counted as living area: Yes

Heated: Yes
Finished: Yes
Enclosed: Yes
Contiguous: Yes
Permitted: Yes
Wet space: No
Addition: No
Conversion: No

5 Floor 1 - Bedroom

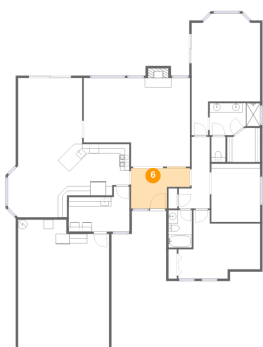


Dimensions: 14'8" x 18'10"
Area: 290 sq. ft
Counted as living area: Yes

Heated: Yes
Finished: Yes
Enclosed: Yes
Contiguous: Yes
Permitted: Yes
Wet space: No
Addition: No
Conversion: No

4037 North 155th Drive, Pebblecreek, Goodyear,
Maricopa County, Arizona, United States, 85395

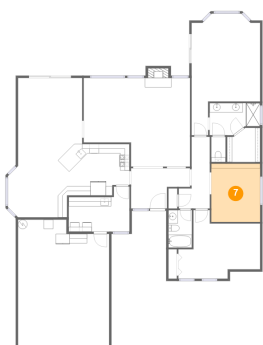
6 Floor 1 - Entry



Dimensions: 12'8" x 8'8"
Area: 88 sq. ft
Counted as living area: Yes

Heated: Yes
Finished: Yes
Enclosed: Yes
Contiguous: Yes
Permitted: Yes
Wet space: No
Addition: No
Conversion: No

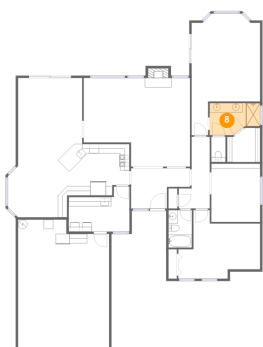
7 Floor 1 - Living Room



Dimensions: 10'5" x 12'6"
Area: 131 sq. ft
Counted as living area: Yes

Heated: Yes
Finished: Yes
Enclosed: Yes
Contiguous: Yes
Permitted: Yes
Wet space: No
Addition: No
Conversion: No

8 Floor 1 - Bath

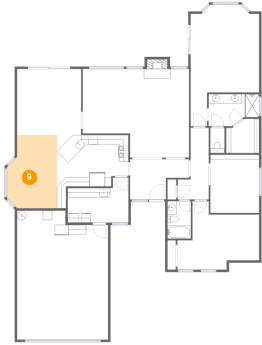


Dimensions: 10'10" x 6'11"
Area: 66 sq. ft
Counted as living area: Yes

Heated: Yes
Finished: Yes
Enclosed: Yes
Contiguous: Yes
Permitted: Yes
Wet space: Yes
Addition: No
Conversion: No

4037 North 155th Drive, Pebblecreek, Goodyear, Maricopa County, Arizona, United States, 85395

9 Floor 1 - Living Room



Dimensions: 10'9" x 15'8"
Area: 154 sq. ft
Counted as living area: Yes

Heated: Yes
Finished: Yes
Enclosed: Yes
Contiguous: Yes
Permitted: Yes
Wet space: No
Addition: No
Conversion: No

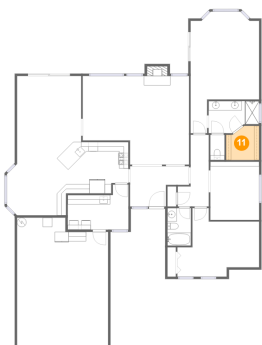
10 Floor 1 - Dining Room



Dimensions: 13'9" x 14'2"
Area: 194 sq. ft
Counted as living area: Yes

Heated: Yes
Finished: Yes
Enclosed: Yes
Contiguous: Yes
Permitted: Yes
Wet space: No
Addition: No
Conversion: No

11 Floor 1 - Cl

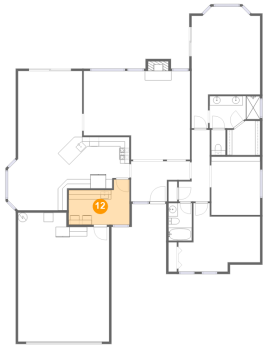


Dimensions: 7'1" x 7'4"
Area: 47 sq. ft
Counted as living area: Yes

Heated: Yes
Finished: Yes
Enclosed: Yes
Contiguous: Yes
Permitted: Yes
Wet space: No
Addition: No
Conversion: No

4037 North 155th Drive, Pebblecreek, Goodyear, Maricopa County, Arizona, United States, 85395

12 Floor 1 - Utility



Dimensions: 13'0" x 9'8"
Area: 104 sq. ft
Counted as living area: Yes

Heated: Yes
Finished: Yes
Enclosed: Yes
Contiguous: Yes
Permitted: Yes
Wet space: No
Addition: No
Conversion: No

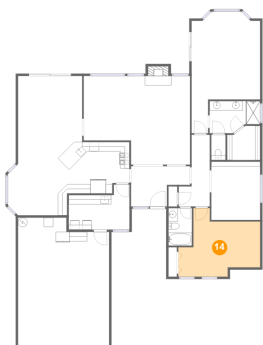
13 Floor 1 - Bath



Dimensions: 3'1" x 5'5"
Area: 16 sq. ft
Counted as living area: Yes

Heated: Yes
Finished: Yes
Enclosed: Yes
Contiguous: Yes
Permitted: Yes
Wet space: Yes
Addition: No
Conversion: No

14 Floor 1 - Bedroom

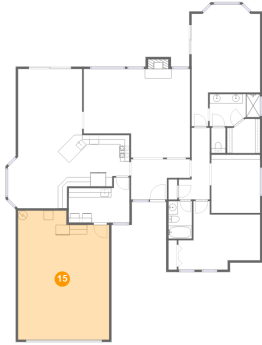


Dimensions: 17'6" x 14'8"
Area: 185 sq. ft
Counted as living area: Yes

Heated: Yes
Finished: Yes
Enclosed: Yes
Contiguous: Yes
Permitted: Yes
Wet space: No
Addition: No
Conversion: No

**4037 North 155th Drive, Pebblecreek, Goodyear,
Maricopa County, Arizona, United States, 85395**

15 Floor 1 - Garage



Dimensions: 19'6" x 27'7"
Area: 511 sq. ft
Counted as living area: No

Heated: No
Finished: No
Enclosed: Yes
Contiguous: Yes
Permitted: Yes
Wet space: No
Addition: No
Conversion: No