




**310 Mountain Avenue Southwest, Old
Southwest, Roanoke, Roanoke, Virginia, United**




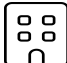
Property summary


**0** Garages


**4** Bedrooms

**3** Bathrooms

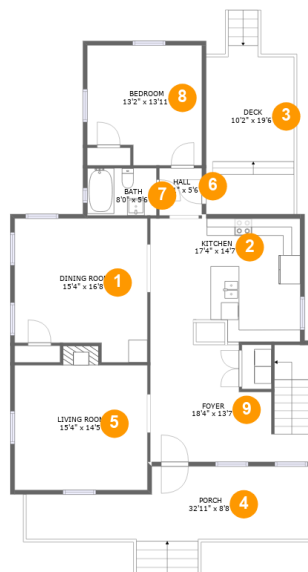
**0** Half baths

**2** Floors

**2,650** Gross living area sqft

**3,270** Total sqft

310 Mountain Avenue Southwest, Old Southwest, Roanoke, Roanoke, Virginia, United



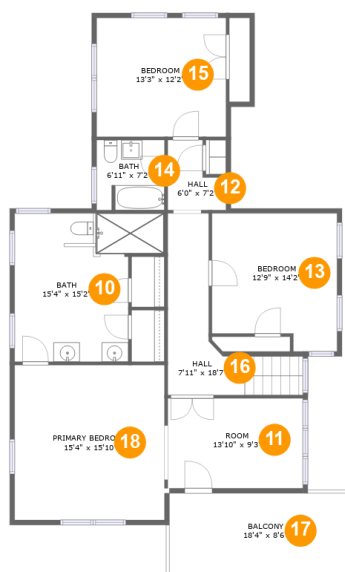
Room dimensions

Floor 1

Total sqft: 1810 Living area: 1346

#		Dimensions	sqft	Counted as living area
1	Dining Room	15'4" x 16'8"	233 sq. ft	Yes
2	Kitchen	17'4" x 14'7"	251 sq. ft	Yes
3	Outdoor	10'2" x 19'6"	203 sq. ft	No
4	Outdoor	32'11" x 8'8"	261 sq. ft	No
5	Living Room	15'4" x 14'5"	231 sq. ft	Yes
6	Hall	4'11" x 5'6"	27 sq. ft	Yes
7	Bath	8'0" x 5'6"	44 sq. ft	Yes
8	Bedroom	13'2" x 13'11"	171 sq. ft	Yes
9	Entry	18'4" x 13'7"	225 sq. ft	Yes

310 Mountain Avenue Southwest, Old Southwest, Roanoke, Roanoke, Virginia, United



Room dimensions

Floor 2

Total sqft: 1460 Living area: 1304

#		Dimensions	sqft	Counted as living area
10	Bath	15'4" x 15'2"	192 sq. ft	Yes
11	Room	13'10" x 9'3"	128 sq. ft	Yes
12	Hall	6'0" x 7'2"	34 sq. ft	Yes
13	Bedroom	12'9" x 14'2"	166 sq. ft	Yes
14	Bath	6'11" x 7'2"	49 sq. ft	Yes
15	Bedroom	13'3" x 12'2"	161 sq. ft	Yes
16	Hall	7'11" x 18'7"	117 sq. ft	Yes
17	Outdoor	18'4" x 8'6"	156 sq. ft	No
18	Bedroom	15'4" x 15'10"	244 sq. ft	Yes

310 Mountain Avenue Southwest, Old Southwest, Roanoke, Roanoke, Virginia, United

1 Floor 1 - Dining Room



Dimensions: 15'4" x 16'8"
Area: 233 sq. ft
Counted as living area: Yes

Heated: Yes
Finished: Yes
Enclosed: Yes
Contiguous: Yes
Permitted: Yes
Wet space: No
Addition: No
Conversion: No

2 Floor 1 - Kitchen



Dimensions: 17'4" x 14'7"
Area: 251 sq. ft
Counted as living area: Yes

Heated: Yes
Finished: Yes
Enclosed: Yes
Contiguous: Yes
Permitted: Yes
Wet space: No
Addition: No
Conversion: No

310 Mountain Avenue Southwest, Old Southwest, Roanoke, Roanoke, Virginia, United

3 Floor 1 - Outdoor



Dimensions: 10'2" x 19'6"
Area: 203 sq. ft
Counted as living area: No

Heated: No
Finished: Yes
Enclosed: No
Contiguous: Yes
Permitted: Yes
Wet space: No
Addition: No
Conversion: No

4 Floor 1 - Outdoor



Dimensions: 32'11" x 8'8"
Area: 261 sq. ft
Counted as living area: No

Heated: No
Finished: Yes
Enclosed: No
Contiguous: Yes
Permitted: Yes
Wet space: No
Addition: No
Conversion: No

5 Floor 1 - Living Room



Dimensions: 15'4" x 14'5"
Area: 231 sq. ft
Counted as living area: Yes

Heated: Yes
Finished: Yes
Enclosed: Yes
Contiguous: Yes
Permitted: Yes
Wet space: No
Addition: No
Conversion: No

310 Mountain Avenue Southwest, Old Southwest, Roanoke, Roanoke, Virginia, United

6 Floor 1 - Hall



Dimensions: 4'11" x 5'6"
Area: 27 sq. ft
Counted as living area: Yes

Heated: Yes
Finished: Yes
Enclosed: Yes
Contiguous: Yes
Permitted: Yes
Wet space: No
Addition: No
Conversion: No

7 Floor 1 - Bath



Dimensions: 8'0" x 5'6"
Area: 44 sq. ft
Counted as living area: Yes

Heated: Yes
Finished: Yes
Enclosed: Yes
Contiguous: Yes
Permitted: Yes
Wet space: Yes
Addition: No
Conversion: No

8 Floor 1 - Bedroom



Dimensions: 13'2" x 13'11"
Area: 171 sq. ft
Counted as living area: Yes

Heated: Yes
Finished: Yes
Enclosed: Yes
Contiguous: Yes
Permitted: Yes
Wet space: No
Addition: No
Conversion: No

310 Mountain Avenue Southwest, Old Southwest, Roanoke, Roanoke, Virginia, United

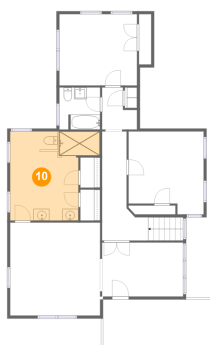
9 Floor 1 - Entry



Dimensions: 18'4" x 13'7"
Area: 225 sq. ft
Counted as living area: Yes

Heated: Yes
Finished: Yes
Enclosed: Yes
Contiguous: Yes
Permitted: Yes
Wet space: No
Addition: No
Conversion: No

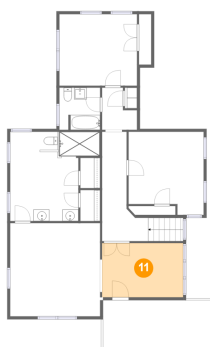
10 Floor 2 - Bath



Dimensions: 15'4" x 15'2"
Area: 192 sq. ft
Counted as living area: Yes

Heated: Yes
Finished: Yes
Enclosed: Yes
Contiguous: Yes
Permitted: Yes
Wet space: Yes
Addition: No
Conversion: No

11 Floor 2 - Room

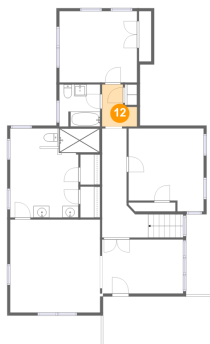


Dimensions: 13'10" x 9'3"
Area: 128 sq. ft
Counted as living area: Yes

Heated: Yes
Finished: Yes
Enclosed: Yes
Contiguous: Yes
Permitted: Yes
Wet space: No
Addition: No
Conversion: No

310 Mountain Avenue Southwest, Old Southwest, Roanoke, Roanoke, Virginia, United

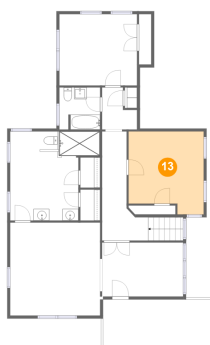
12 Floor 2 - Hall



Dimensions: 6'0" x 7'2"
Area: 34 sq. ft
Counted as living area: Yes

Heated: Yes
Finished: Yes
Enclosed: Yes
Contiguous: Yes
Permitted: Yes
Wet space: No
Addition: No
Conversion: No

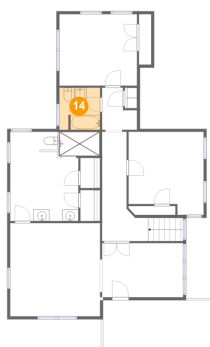
13 Floor 2 - Bedroom



Dimensions: 12'9" x 14'2"
Area: 166 sq. ft
Counted as living area: Yes

Heated: Yes
Finished: Yes
Enclosed: Yes
Contiguous: Yes
Permitted: Yes
Wet space: No
Addition: No
Conversion: No

14 Floor 2 - Bath

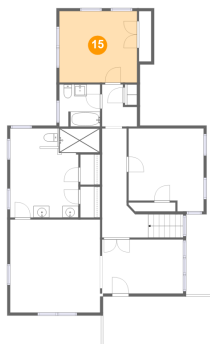


Dimensions: 6'11" x 7'2"
Area: 49 sq. ft
Counted as living area: Yes

Heated: Yes
Finished: Yes
Enclosed: Yes
Contiguous: Yes
Permitted: Yes
Wet space: Yes
Addition: No
Conversion: No

310 Mountain Avenue Southwest, Old Southwest, Roanoke, Roanoke, Virginia, United

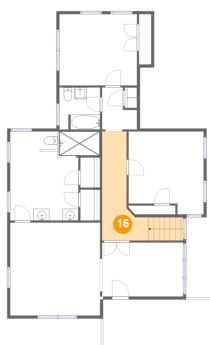
15 Floor 2 - Bedroom



Dimensions: 13'3" x 12'2"
Area: 161 sq. ft
Counted as living area: Yes

Heated: Yes
Finished: Yes
Enclosed: Yes
Contiguous: Yes
Permitted: Yes
Wet space: No
Addition: No
Conversion: No

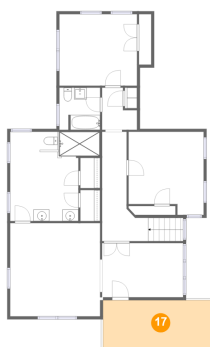
16 Floor 2 - Hall



Dimensions: 7'11" x 18'7"
Area: 117 sq. ft
Counted as living area: Yes

Heated: Yes
Finished: Yes
Enclosed: Yes
Contiguous: Yes
Permitted: Yes
Wet space: No
Addition: No
Conversion: No

17 Floor 2 - Outdoor

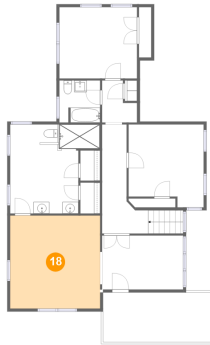


Dimensions: 18'4" x 8'6"
Area: 156 sq. ft
Counted as living area: No

Heated: No
Finished: Yes
Enclosed: No
Contiguous: Yes
Permitted: Yes
Wet space: No
Addition: No
Conversion: No

310 Mountain Avenue Southwest, Old Southwest, Roanoke, Roanoke, Virginia, United

18 Floor 2 - Bedroom



Dimensions: 15'4" x 15'10"
Area: 244 sq. ft
Counted as living area: Yes

Heated: Yes
Finished: Yes
Enclosed: Yes
Contiguous: Yes
Permitted: Yes
Wet space: No
Addition: No
Conversion: No