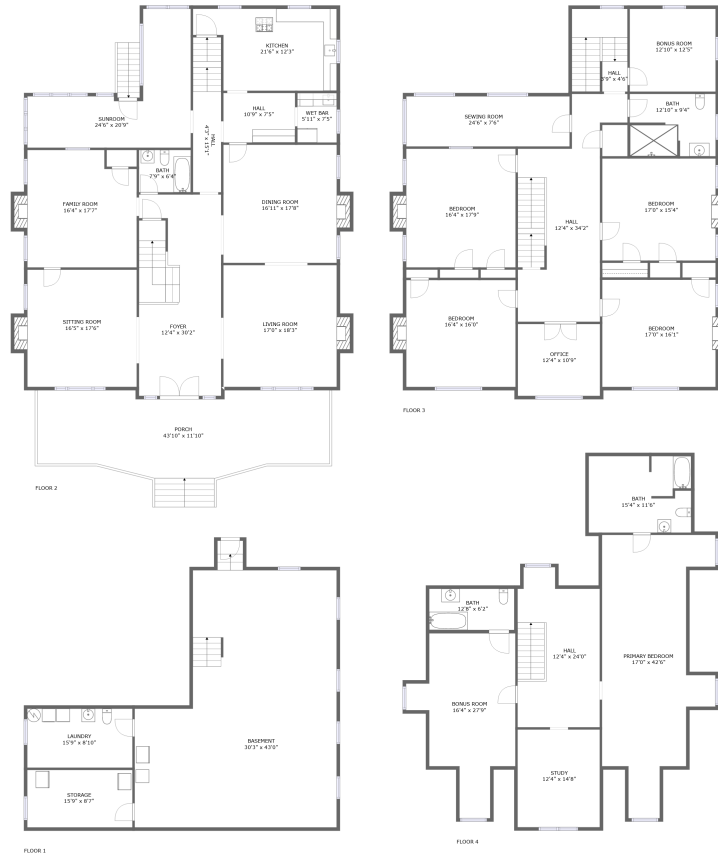



310 Washington Avenue Southwest, Old Southwest, Roanoke, Roanoke, Virginia, United States, 24016



Property summary


 **0** Garages

 **5** Bedrooms

 **4** Bathrooms

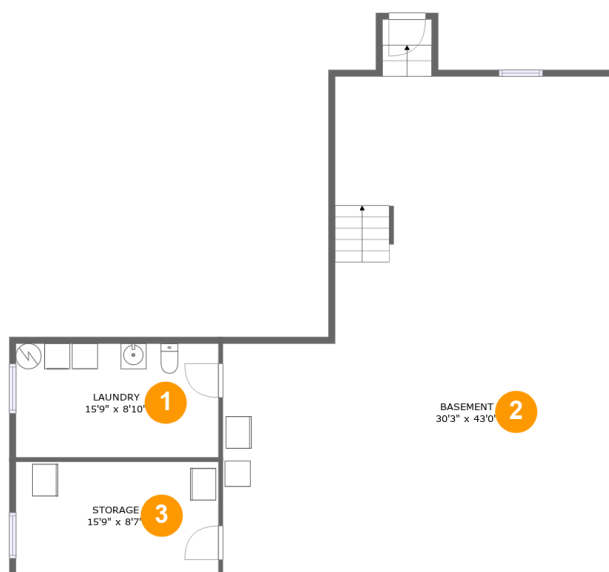
 **0** Half baths

 **4** Floors

 **6,568** Gross living area sqft

 **8,646** Total sqft

310 Washington Avenue Southwest, Old Southwest, Roanoke, Roanoke, Virginia, United States, 24016



Room dimensions

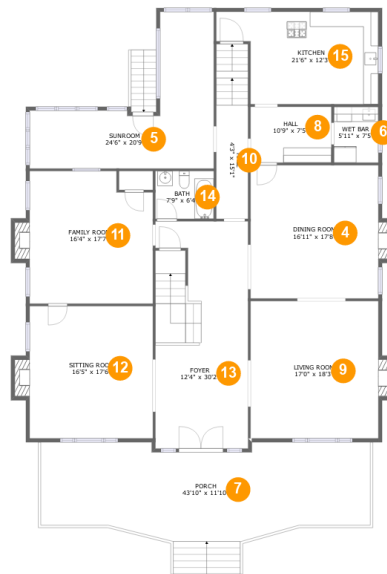
Floor 1

Total sqft: 1379

Living area: 0

#		Dimensions	sqft	Counted as living area
1	Utility	15'9" x 8'10"	139 sq. ft	No
2	Basement	30'3" x 43'0"	1002 sq. ft	No
3	Storage	15'9" x 8'7"	136 sq. ft	No

310 Washington Avenue Southwest, Old Southwest, Roanoke, Roanoke, Virginia, United States, 24016



Room dimensions

Floor 2

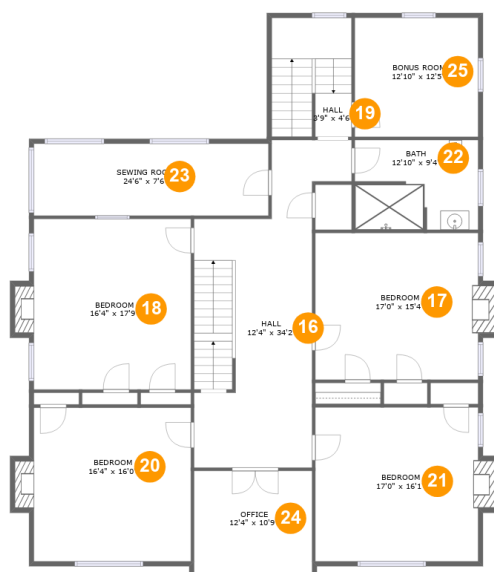
Total sqft: 3107 Living area: 2518

#		Dimensions	sqft	Counted as living area
4	Dining Room	16'11" x 17'8"	311 sq. ft	Yes
5	Room	24'6" x 20'9"	279 sq. ft	Yes
6	Bar	5'11" x 7'5"	44 sq. ft	Yes
7	Outdoor	43'10" x 11'10"	541 sq. ft	No
8	Hall	10'9" x 7'5"	80 sq. ft	Yes
9	Living Room	17'0" x 18'3"	320 sq. ft	Yes
10	Hall	4'3" x 15'1"	98 sq. ft	Yes
11	Living Room	16'4" x 17'7"	284 sq. ft	Yes
12	Living Room	16'5" x 17'6"	298 sq. ft	Yes
13	Entry	12'4" x 30'2"	369 sq. ft	Yes
14	Bath	7'9" x 6'4"	49 sq. ft	Yes

**310 Washington Avenue Southwest, Old Southwest,
Roanoke, Roanoke, Virginia, United States, 24016**

#		Dimensions	sqft	Counted as living area
15	Kitchen	21'6" x 12'3"	227 sq. ft	Yes

310 Washington Avenue Southwest, Old Southwest, Roanoke, Roanoke, Virginia, United States, 24016



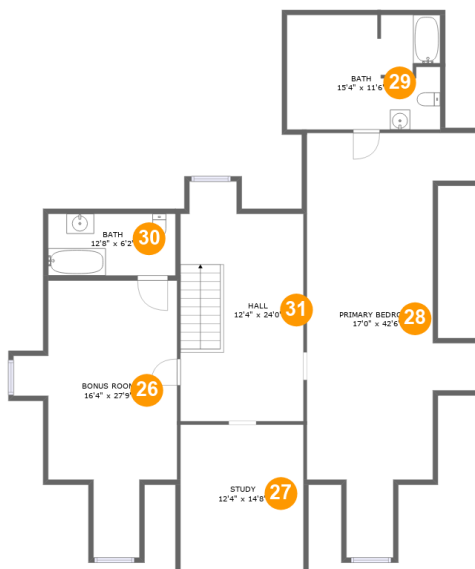
Room dimensions

Floor 3

Total sqft: 2471 Living area: 2423

#		Dimensions	sqft	Counted as living area
16	Hall	12'4" x 34'2"	369 sq. ft	Yes
17	Bedroom	17'0" x 15'4"	270 sq. ft	Yes
18	Bedroom	16'4" x 17'9"	301 sq. ft	Yes
19	Hall	3'9" x 4'6"	102 sq. ft	Yes
20	Bedroom	16'4" x 16'0"	272 sq. ft	Yes
21	Bedroom	17'0" x 16'1"	283 sq. ft	Yes
22	Bath	12'10" x 9'4"	118 sq. ft	Yes
23	Sewing Room	24'6" x 7'6"	184 sq. ft	Yes
24	Office	12'4" x 10'9"	133 sq. ft	Yes
25	Room	12'10" x 12'5"	160 sq. ft	Yes

310 Washington Avenue Southwest, Old Southwest, Roanoke, Roanoke, Virginia, United States, 24016



Room dimensions

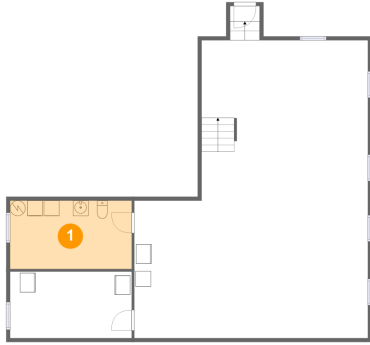
Floor 4

Total sqft: 1689 Living area: 1627

#		Dimensions	sqft	Counted as living area
26	Room	16'4" x 27'9"	307 sq. ft	Yes
27	Study	12'4" x 14'8"	161 sq. ft	Yes
28	Bedroom	17'0" x 42'6"	515 sq. ft	Yes
29	Bath	15'4" x 11'6"	152 sq. ft	Yes
30	Bath	12'8" x 6'2"	79 sq. ft	Yes
31	Hall	12'4" x 24'0"	271 sq. ft	Yes

310 Washington Avenue Southwest, Old Southwest, Roanoke, Roanoke, Virginia, United States, 24016

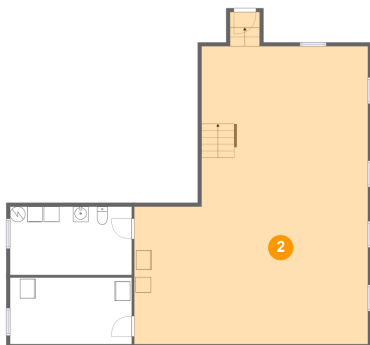
1 Floor 1 - Utility



Dimensions: 15'9" x 8'10"
Area: 139 sq. ft
Counted as living area: No

Heated: Yes
Finished: Yes
Enclosed: Yes
Contiguous: No
Permitted: Yes
Wet space: No
Addition: No
Conversion: No

2 Floor 1 - Basement

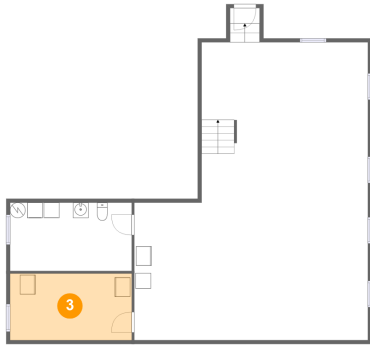


Dimensions: 30'3" x 43'0"
Area: 1002 sq. ft
Counted as living area: No

Heated: Yes
Finished: No
Enclosed: Yes
Contiguous: Yes
Permitted: Yes
Wet space: No
Addition: No
Conversion: No

310 Washington Avenue Southwest, Old Southwest, Roanoke, Roanoke, Virginia, United States, 24016

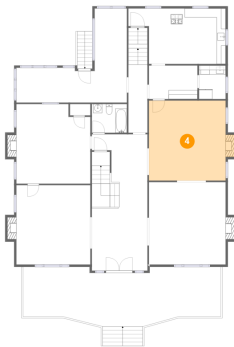
3 Floor 1 - Storage



Dimensions: 15'9" x 8'7"
Area: 136 sq. ft
Counted as living area: No

Heated: No
Finished: No
Enclosed: No
Contiguous: Yes
Permitted: Yes
Wet space: No
Addition: No
Conversion: No

4 Floor 2 - Dining Room



Dimensions: 16'11" x 17'8"
Area: 311 sq. ft
Counted as living area: Yes

Heated: Yes
Finished: Yes
Enclosed: Yes
Contiguous: Yes
Permitted: Yes
Wet space: No
Addition: No
Conversion: No

5 Floor 2 - Room

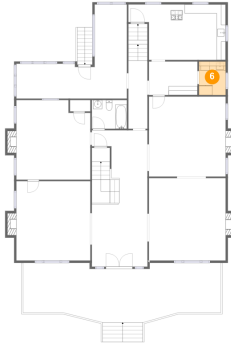


Dimensions: 24'6" x 20'9"
Area: 279 sq. ft
Counted as living area: Yes

Heated: Yes
Finished: Yes
Enclosed: Yes
Contiguous: Yes
Permitted: Yes
Wet space: No
Addition: No
Conversion: No

310 Washington Avenue Southwest, Old Southwest, Roanoke, Roanoke, Virginia, United States, 24016

6 Floor 2 - Bar



Dimensions: 5'11" x 7'5"
Area: 44 sq. ft
Counted as living area: Yes

Heated: Yes
Finished: Yes
Enclosed: Yes
Contiguous: Yes
Permitted: Yes
Wet space: No
Addition: No
Conversion: No

7 Floor 2 - Outdoor



Dimensions: 43'10" x 11'10"
Area: 541 sq. ft
Counted as living area: No

Heated: No
Finished: Yes
Enclosed: No
Contiguous: Yes
Permitted: Yes
Wet space: No
Addition: No
Conversion: No

8 Floor 2 - Hall



Dimensions: 10'9" x 7'5"
Area: 80 sq. ft
Counted as living area: Yes

Heated: Yes
Finished: Yes
Enclosed: Yes
Contiguous: Yes
Permitted: Yes
Wet space: No
Addition: No
Conversion: No

310 Washington Avenue Southwest, Old Southwest, Roanoke, Roanoke, Virginia, United States, 24016

9 Floor 2 - Living Room



Dimensions: 17'0" x 18'3"
Area: 320 sq. ft
Counted as living area: Yes

Heated: Yes
Finished: Yes
Enclosed: Yes
Contiguous: Yes
Permitted: Yes
Wet space: No
Addition: No
Conversion: No

10 Floor 2 - Hall



Dimensions: 4'3" x 15'1"
Area: 98 sq. ft
Counted as living area: Yes

Heated: Yes
Finished: Yes
Enclosed: Yes
Contiguous: Yes
Permitted: Yes
Wet space: No
Addition: No
Conversion: No

11 Floor 2 - Living Room

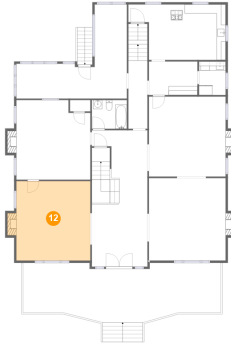


Dimensions: 16'4" x 17'7"
Area: 284 sq. ft
Counted as living area: Yes

Heated: Yes
Finished: Yes
Enclosed: Yes
Contiguous: Yes
Permitted: Yes
Wet space: No
Addition: No
Conversion: No

310 Washington Avenue Southwest, Old Southwest, Roanoke, Roanoke, Virginia, United States, 24016

12 Floor 2 - Living Room



Dimensions: 16'5" x 17'6"
Area: 298 sq. ft
Counted as living area: Yes

Heated: Yes
Finished: Yes
Enclosed: Yes
Contiguous: Yes
Permitted: Yes
Wet space: No
Addition: No
Conversion: No

13 Floor 2 - Entry



Dimensions: 12'4" x 30'2"
Area: 369 sq. ft
Counted as living area: Yes

Heated: Yes
Finished: Yes
Enclosed: Yes
Contiguous: Yes
Permitted: Yes
Wet space: No
Addition: No
Conversion: No

14 Floor 2 - Bath



Dimensions: 7'9" x 6'4"
Area: 49 sq. ft
Counted as living area: Yes

Heated: Yes
Finished: Yes
Enclosed: Yes
Contiguous: Yes
Permitted: Yes
Wet space: Yes
Addition: No
Conversion: No

310 Washington Avenue Southwest, Old Southwest, Roanoke, Roanoke, Virginia, United States, 24016

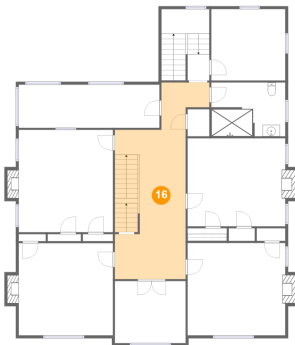
15 Floor 2 - Kitchen



Dimensions: 21'6" x 12'3"
Area: 227 sq. ft
Counted as living area: Yes

Heated: Yes
Finished: Yes
Enclosed: Yes
Contiguous: Yes
Permitted: Yes
Wet space: No
Addition: No
Conversion: No

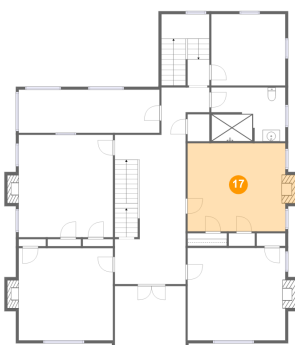
16 Floor 3 - Hall



Dimensions: 12'4" x 34'2"
Area: 369 sq. ft
Counted as living area: Yes

Heated: Yes
Finished: Yes
Enclosed: Yes
Contiguous: Yes
Permitted: Yes
Wet space: No
Addition: No
Conversion: No

17 Floor 3 - Bedroom

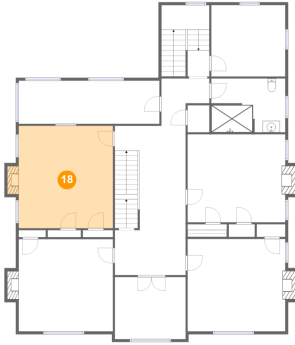


Dimensions: 17'0" x 15'4"
Area: 270 sq. ft
Counted as living area: Yes

Heated: Yes
Finished: Yes
Enclosed: Yes
Contiguous: Yes
Permitted: Yes
Wet space: No
Addition: No
Conversion: No

310 Washington Avenue Southwest, Old Southwest, Roanoke, Roanoke, Virginia, United States, 24016

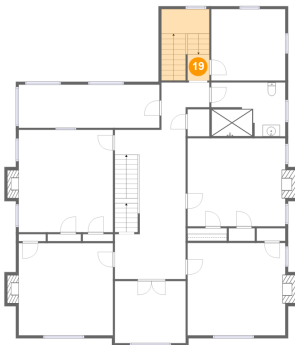
18 Floor 3 - Bedroom



Dimensions: 16'4" x 17'9"
Area: 301 sq. ft
Counted as living area: Yes

Heated: Yes
Finished: Yes
Enclosed: Yes
Contiguous: Yes
Permitted: Yes
Wet space: No
Addition: No
Conversion: No

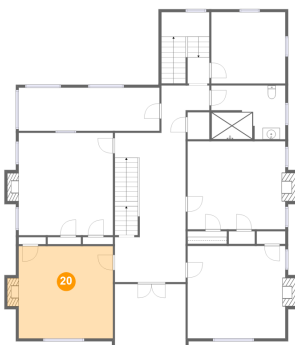
19 Floor 3 - Hall



Dimensions: 3'9" x 4'6"
Area: 102 sq. ft
Counted as living area: Yes

Heated: Yes
Finished: Yes
Enclosed: Yes
Contiguous: Yes
Permitted: Yes
Wet space: No
Addition: No
Conversion: No

20 Floor 3 - Bedroom



Dimensions: 16'4" x 16'0"
Area: 272 sq. ft
Counted as living area: Yes

Heated: Yes
Finished: Yes
Enclosed: Yes
Contiguous: Yes
Permitted: Yes
Wet space: No
Addition: No
Conversion: No

310 Washington Avenue Southwest, Old Southwest, Roanoke, Roanoke, Virginia, United States, 24016

21 Floor 3 - Bedroom



Dimensions: 17'0" x 16'1"
Area: 283 sq. ft
Counted as living area: Yes

Heated: Yes
Finished: Yes
Enclosed: Yes
Contiguous: Yes
Permitted: Yes
Wet space: No
Addition: No
Conversion: No

22 Floor 3 - Bath



Dimensions: 12'10" x 9'4"
Area: 118 sq. ft
Counted as living area: Yes

Heated: Yes
Finished: Yes
Enclosed: Yes
Contiguous: Yes
Permitted: Yes
Wet space: Yes
Addition: No
Conversion: No

23 Floor 3 - Sewing Room



Dimensions: 24'6" x 7'6"
Area: 184 sq. ft
Counted as living area: Yes

Heated: Yes
Finished: Yes
Enclosed: Yes
Contiguous: Yes
Permitted: Yes
Wet space: No
Addition: No
Conversion: No

310 Washington Avenue Southwest, Old Southwest, Roanoke, Roanoke, Virginia, United States, 24016

24 Floor 3 - Office



Dimensions: 12'4" x 10'9"
Area: 133 sq. ft
Counted as living area: Yes

Heated: Yes
Finished: Yes
Enclosed: Yes
Contiguous: Yes
Permitted: Yes
Wet space: No
Addition: No
Conversion: No

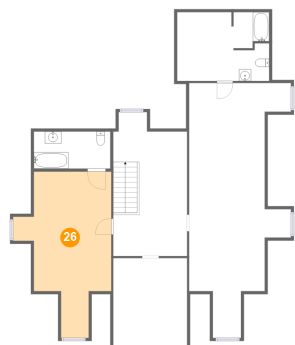
25 Floor 3 - Room



Dimensions: 12'10" x 12'5"
Area: 160 sq. ft
Counted as living area: Yes

Heated: Yes
Finished: Yes
Enclosed: Yes
Contiguous: Yes
Permitted: Yes
Wet space: No
Addition: No
Conversion: No

26 Floor 4 - Room

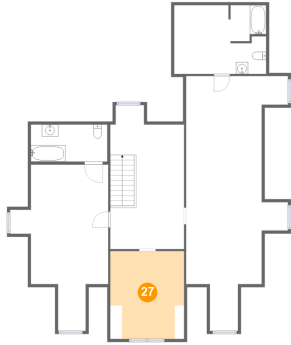


Dimensions: 16'4" x 27'9"
Area: 307 sq. ft
Counted as living area: Yes

Heated: Yes
Finished: Yes
Enclosed: Yes
Contiguous: Yes
Permitted: Yes
Wet space: No
Addition: No
Conversion: No

310 Washington Avenue Southwest, Old Southwest, Roanoke, Roanoke, Virginia, United States, 24016

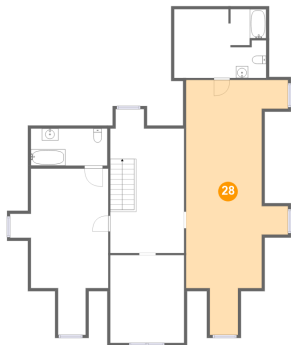
27 Floor 4 - Study



Dimensions: 12'4" x 14'8"
Area: 161 sq. ft
Counted as living area: Yes

Heated: Yes
Finished: Yes
Enclosed: Yes
Contiguous: Yes
Permitted: Yes
Wet space: No
Addition: No
Conversion: No

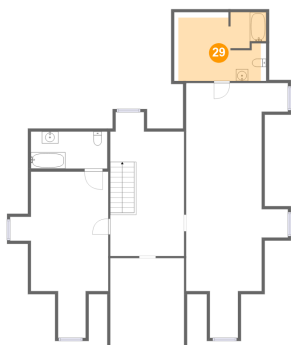
28 Floor 4 - Bedroom



Dimensions: 17'0" x 42'6"
Area: 515 sq. ft
Counted as living area: Yes

Heated: Yes
Finished: Yes
Enclosed: Yes
Contiguous: Yes
Permitted: Yes
Wet space: No
Addition: No
Conversion: No

29 Floor 4 - Bath

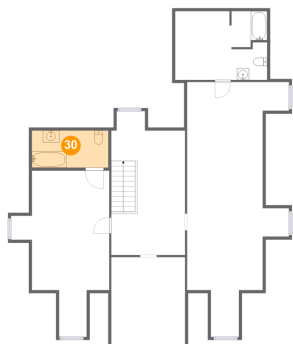


Dimensions: 15'4" x 11'6"
Area: 152 sq. ft
Counted as living area: Yes

Heated: Yes
Finished: Yes
Enclosed: Yes
Contiguous: Yes
Permitted: Yes
Wet space: Yes
Addition: No
Conversion: No

310 Washington Avenue Southwest, Old Southwest, Roanoke, Roanoke, Virginia, United States, 24016

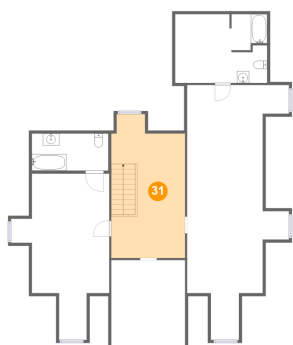
30 Floor 4 - Bath



Dimensions: 12'8" x 6'2"
Area: 79 sq. ft
Counted as living area: Yes

Heated: Yes
Finished: Yes
Enclosed: Yes
Contiguous: Yes
Permitted: Yes
Wet space: Yes
Addition: No
Conversion: No

31 Floor 4 - Hall



Dimensions: 12'4" x 24'0"
Area: 271 sq. ft
Counted as living area: Yes

Heated: Yes
Finished: Yes
Enclosed: Yes
Contiguous: Yes
Permitted: Yes
Wet space: No
Addition: No
Conversion: No