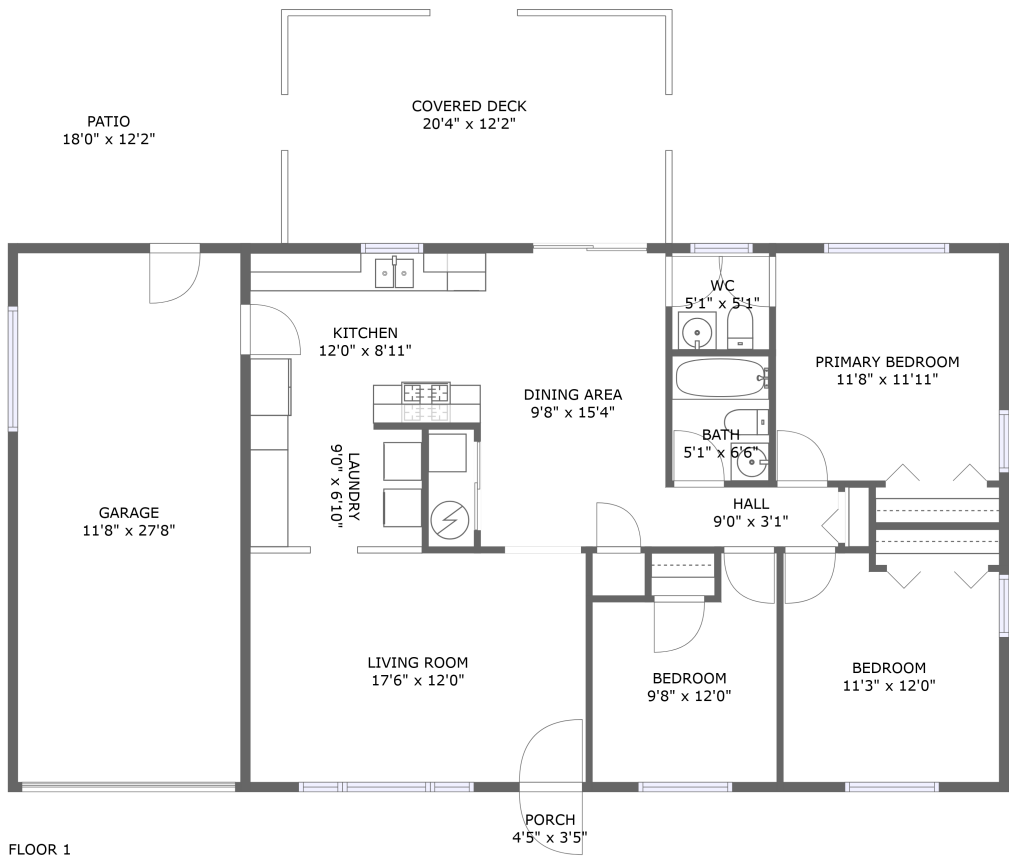




Home report


14600 Ash Street, Orland Park, Cook County, Illinois, United States, 60462




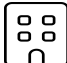
Property summary


 **1** Garages


 **3** Bedrooms

 **1** Bathrooms

 **1** Half baths

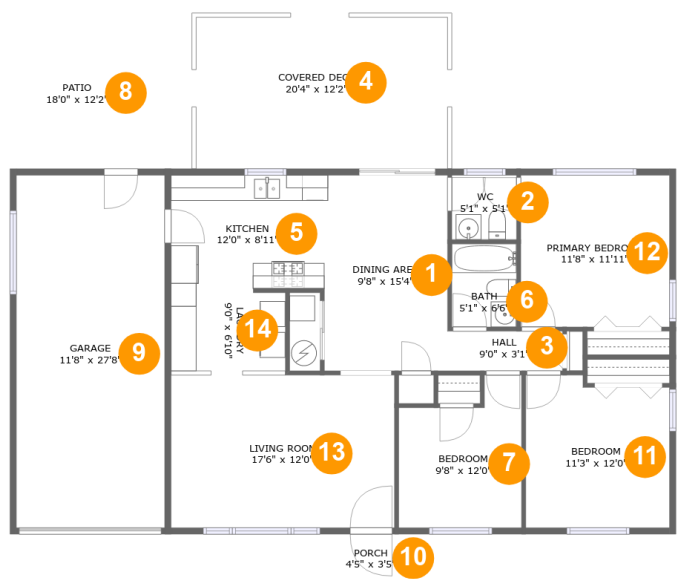
 **1** Floors

 **1,135** Gross living area sqft

 **1,983** Total sqft

Home report

14600 Ash Street, Orland Park, Cook County, Illinois, United States, 60462



Room dimensions

Floor 1 Total sqft: 1983 Living area: 1135

#		Dimensions	sqft	Counted as living area
1	Dining Area	9'8" x 15'4"	149 sq. ft	Yes
2	WC	5'1" x 5'1"	26 sq. ft	Yes
3	Hall	9'0" x 3'1"	28 sq. ft	Yes
4	Covered Deck	20'4" x 12'2"	249 sq. ft	No
5	Kitchen	12'0" x 8'11"	107 sq. ft	Yes
6	Bath	5'1" x 6'6"	33 sq. ft	Yes
7	Bedroom	9'8" x 12'0"	98 sq. ft	Yes
8	Patio	18'0" x 12'2"	221 sq. ft	No
9	Garage	11'8" x 27'8"	322 sq. ft	No
10	Porch	4'5" x 3'5"	15 sq. ft	No
11	Bedroom	11'3" x 12'0"	129 sq. ft	Yes

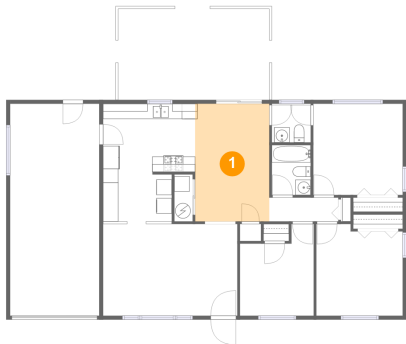
Home report

14600 Ash Street, Orland Park, Cook County, Illinois, United States, 60462

#		Dimensions	sqft	Counted as living area
12	Primary Bedroom	11'8" x 11'11"	139 sq. ft	Yes
13	Living Room	17'6" x 12'0"	210 sq. ft	Yes
14	Laundry	9'0" x 6'10"	60 sq. ft	Yes

14600 Ash Street, Orland Park, Cook County, Illinois, United States, 60462

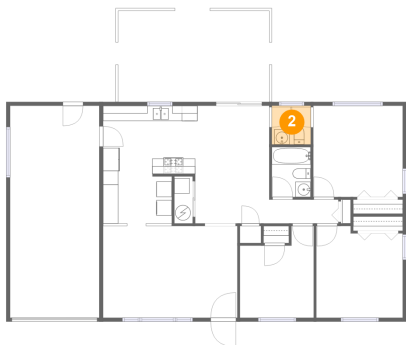
1 Floor 1 - Dining Area



Dimensions: 9'8" x 15'4"
Area: 149 sq. ft
Counted as living area: Yes

Heated: Yes
Finished: Yes
Enclosed: Yes
Contiguous: Yes
Permitted: Yes
Wet space: No
Addition: No
Conversion: No

2 Floor 1 - WC

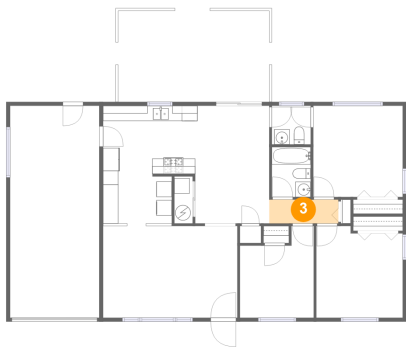


Dimensions: 5'1" x 5'1"
Area: 26 sq. ft
Counted as living area: Yes

Heated: Yes
Finished: Yes
Enclosed: Yes
Contiguous: Yes
Permitted: Yes
Wet space: Yes
Addition: No
Conversion: No

14600 Ash Street, Orland Park, Cook County, Illinois, United States, 60462

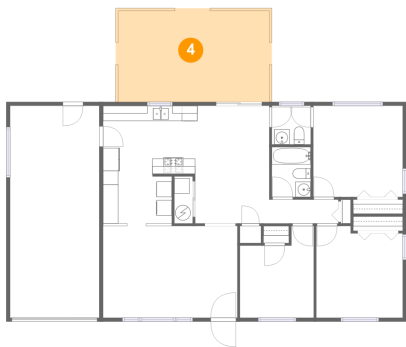
3 Floor 1 - Hall



Dimensions: 9'0" x 3'1"
Area: 28 sq. ft
Counted as living area: Yes

Heated: Yes
Finished: Yes
Enclosed: Yes
Contiguous: Yes
Permitted: Yes
Wet space: No
Addition: No
Conversion: No

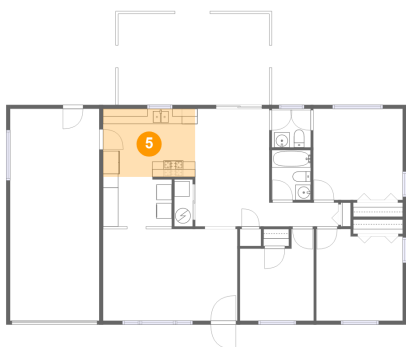
4 Floor 1 - Covered Deck



Dimensions: 20'4" x 12'2"
Area: 249 sq. ft
Counted as living area: No

Heated: No
Finished: Yes
Enclosed: No
Contiguous: Yes
Permitted: Yes
Wet space: No
Addition: No
Conversion: No

5 Floor 1 - Kitchen

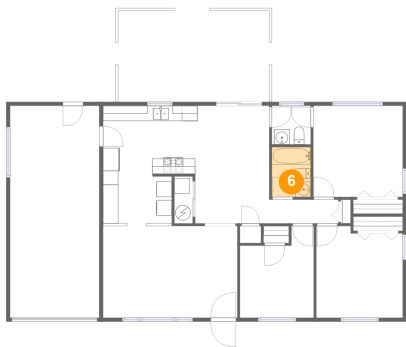


Dimensions: 12'0" x 8'11"
Area: 107 sq. ft
Counted as living area: Yes

Heated: Yes
Finished: Yes
Enclosed: Yes
Contiguous: Yes
Permitted: Yes
Wet space: No
Addition: No
Conversion: No

14600 Ash Street, Orland Park, Cook County, Illinois, United States, 60462

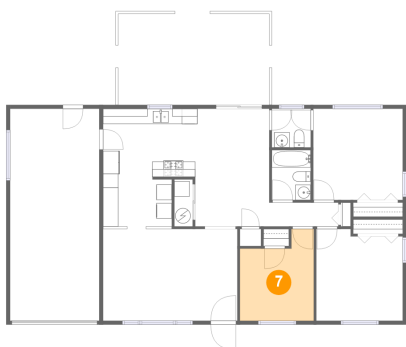
6 Floor 1 - Bath



Dimensions: 5'1" x 6'6"
Area: 33 sq. ft
Counted as living area: Yes

Heated: Yes
Finished: Yes
Enclosed: Yes
Contiguous: Yes
Permitted: Yes
Wet space: Yes
Addition: No
Conversion: No

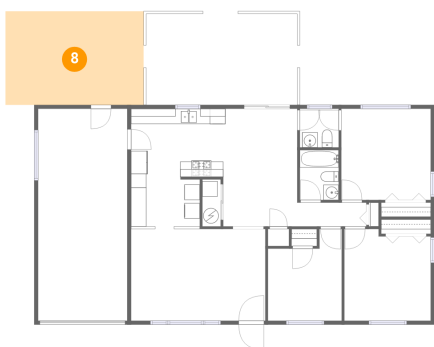
7 Floor 1 - Bedroom



Dimensions: 9'8" x 12'0"
Area: 98 sq. ft
Counted as living area: Yes

Heated: Yes
Finished: Yes
Enclosed: Yes
Contiguous: Yes
Permitted: Yes
Wet space: No
Addition: No
Conversion: No

8 Floor 1 - Patio



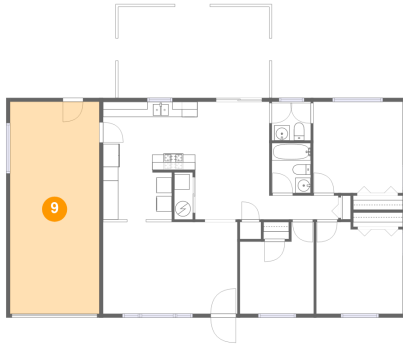
Dimensions: 18'0" x 12'2"
Area: 221 sq. ft
Counted as living area: No

Heated: No
Finished: Yes
Enclosed: No
Contiguous: Yes
Permitted: Yes
Wet space: No
Addition: No
Conversion: No

Home report

14600 Ash Street, Orland Park, Cook County, Illinois, United States, 60462

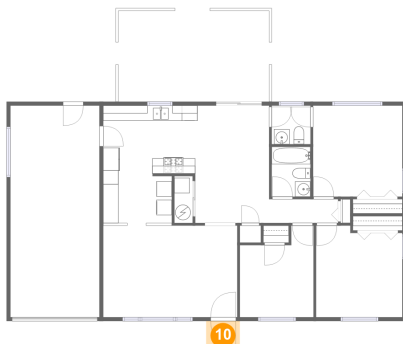
9 Floor 1 - Garage



Dimensions: 11'8" x 27'8"
Area: 322 sq. ft
Counted as living area: No

Heated: No
Finished: No
Enclosed: Yes
Contiguous: Yes
Permitted: Yes
Wet space: No
Addition: No
Conversion: No

10 Floor 1 - Porch



Dimensions: 4'5" x 3'5"
Area: 15 sq. ft
Counted as living area: No

Heated: No
Finished: Yes
Enclosed: No
Contiguous: Yes
Permitted: Yes
Wet space: No
Addition: No
Conversion: No

11 Floor 1 - Bedroom



Dimensions: 11'3" x 12'0"
Area: 129 sq. ft
Counted as living area: Yes

Heated: Yes
Finished: Yes
Enclosed: Yes
Contiguous: Yes
Permitted: Yes
Wet space: No
Addition: No
Conversion: No

14600 Ash Street, Orland Park, Cook County, Illinois, United States, 60462

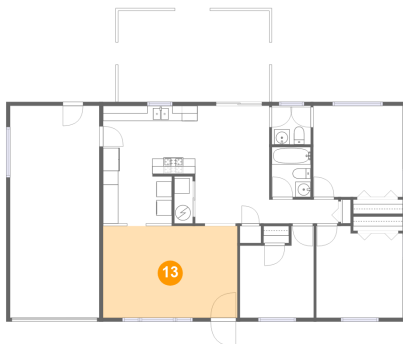
12 Floor 1 - Primary Bedroom



Dimensions: 11'8" x 11'11"
Area: 139 sq. ft
Counted as living area: Yes

Heated: Yes
Finished: Yes
Enclosed: Yes
Contiguous: Yes
Permitted: Yes
Wet space: No
Addition: No
Conversion: No

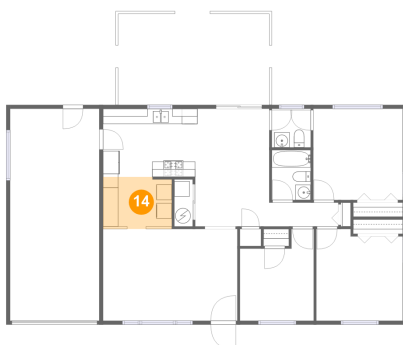
13 Floor 1 - Living Room



Dimensions: 17'6" x 12'0"
Area: 210 sq. ft
Counted as living area: Yes

Heated: Yes
Finished: Yes
Enclosed: Yes
Contiguous: Yes
Permitted: Yes
Wet space: No
Addition: No
Conversion: No

14 Floor 1 - Laundry



Dimensions: 9'0" x 6'10"
Area: 60 sq. ft
Counted as living area: Yes

Heated: Yes
Finished: Yes
Enclosed: Yes
Contiguous: Yes
Permitted: Yes
Wet space: No
Addition: No
Conversion: No