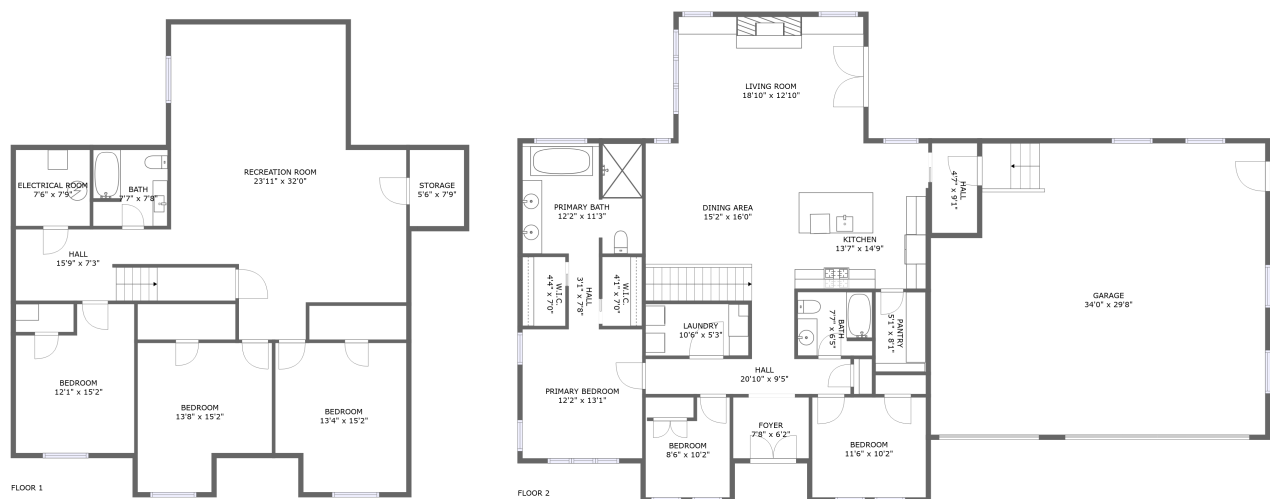




Home report


2323 Talisker Ave,Spearfish,SD,US




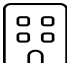
Property summary


 **1** Garages


 **6** Bedrooms

 **3** Bathrooms

 **0** Half baths

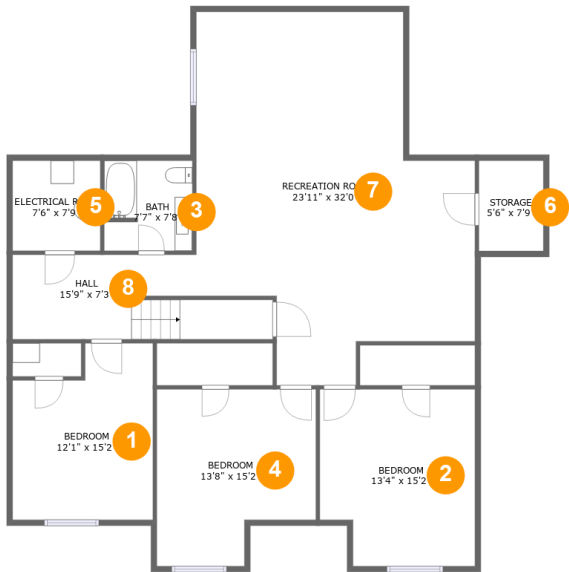
 **2** Floors

 **3,327** Gross living area sqft

 **4,448** Total sqft

Home report

2323 Talisker Ave,Spearfish,SD,US



Room dimensions

Floor 1 Total sqft: 1664    Living area: 1546

#		Dimensions	sqft	Counted as living area
1	Bedroom	12'1" x 15'2"	163 sq. ft	Yes
2	Bedroom	13'4" x 15'2"	191 sq. ft	Yes
3	Bath	7'7" x 7'8"	58 sq. ft	Yes
4	Bedroom	13'8" x 15'2"	183 sq. ft	Yes
5	Electrical Room	7'6" x 7'9"	58 sq. ft	No
6	Storage	5'6" x 7'9"	43 sq. ft	No
7	Recreation Room	23'11" x 32'0"	596 sq. ft	Yes
8	Hall	15'9" x 7'3"	135 sq. ft	Yes

Home report

2323 Talisker Ave,Spearfish,SD,US



Room dimensions

Floor 2 Total sqft: 2784    Living area: 1781

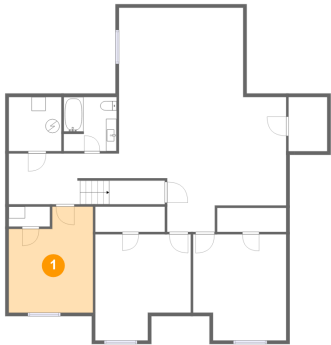
#		Dimensions	sqft	Counted as living area
9	W.I.C.	4'4" x 7'0"	31 sq. ft	Yes
10	W.I.C.	4'1" x 7'0"	29 sq. ft	Yes
11	Garage	34'0" x 29'8"	956 sq. ft	No
12	Primary Bedroom	12'2" x 13'1"	160 sq. ft	Yes
13	Kitchen	13'7" x 14'9"	198 sq. ft	Yes
14	Primary Bath	12'2" x 11'3"	134 sq. ft	Yes
15	Foyer	7'8" x 6'2"	48 sq. ft	Yes
16	Hall	20'10" x 9'5"	100 sq. ft	Yes
17	Hall	3'1" x 7'8"	24 sq. ft	Yes
18	Hall	4'7" x 9'1"	42 sq. ft	Yes
19	Bedroom	8'6" x 10'2"	85 sq. ft	Yes

## Home report

**2323 Talisker Ave,Spearfish,SD,US**

#		Dimensions	sqft	Counted as living area
20	Bedroom	11'6" x 10'2"	117 sq. ft	Yes
21	Bath	7'7" x 6'5"	48 sq. ft	Yes
22	Laundry	10'6" x 5'3"	55 sq. ft	Yes
23	Dining Area	15'2" x 16'0"	243 sq. ft	Yes
24	Living Room	18'10" x 12'10"	242 sq. ft	Yes
25	Pantry	5'1" x 8'1"	41 sq. ft	Yes

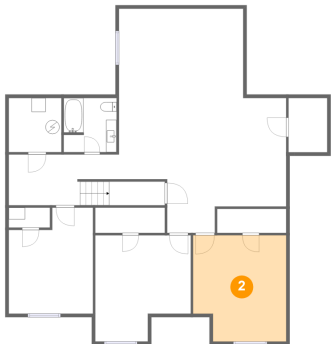
1 Floor 1 - Bedroom



Dimensions: 12'1" x 15'2"  
Area: 163 sq. ft  
Counted as living area: Yes

Heated: Yes  
Finished: Yes  
Enclosed: Yes  
Contiguous: Yes  
Permitted: Yes  
Wet space: No  
Addition: No  
Conversion: No

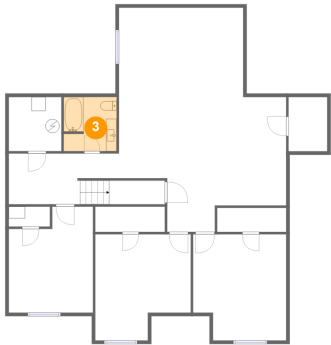
2 Floor 1 - Bedroom



Dimensions: 13'4" x 15'2"  
Area: 191 sq. ft  
Counted as living area: Yes

Heated: Yes  
Finished: Yes  
Enclosed: Yes  
Contiguous: Yes  
Permitted: Yes  
Wet space: No  
Addition: No  
Conversion: No

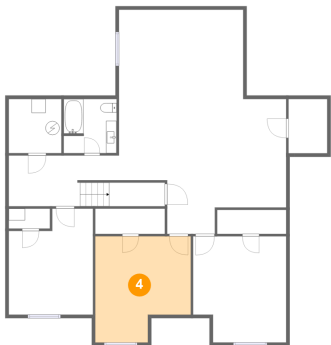
3 Floor 1 - Bath



Dimensions: 7'7" x 7'8"  
Area: 58 sq. ft  
Counted as living area: Yes

Heated: Yes  
Finished: Yes  
Enclosed: Yes  
Contiguous: Yes  
Permitted: Yes  
Wet space: Yes  
Addition: No  
Conversion: No

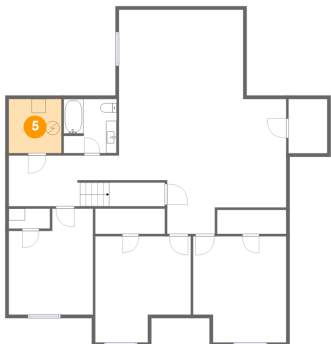
4 Floor 1 - Bedroom



Dimensions: 13'8" x 15'2"  
Area: 183 sq. ft  
Counted as living area: Yes

Heated: Yes  
Finished: Yes  
Enclosed: Yes  
Contiguous: Yes  
Permitted: Yes  
Wet space: No  
Addition: No  
Conversion: No

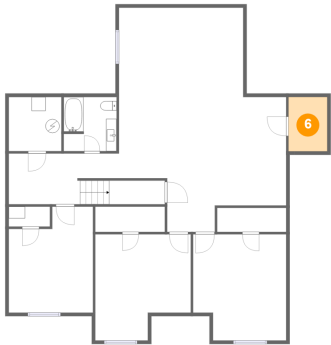
5 Floor 1 - Electrical Room



Dimensions: 7'6" x 7'9"  
Area: 58 sq. ft  
Counted as living area: No

Heated: No  
Finished: No  
Enclosed: Yes  
Contiguous: Yes  
Permitted: Yes  
Wet space: No  
Addition: No  
Conversion: No

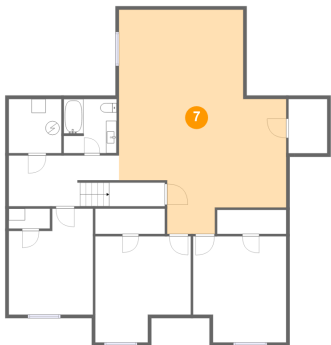
6 Floor 1 - Storage



Dimensions: 5'6" x 7'9"  
Area: 43 sq. ft  
Counted as living area: No

Heated: No  
Finished: Yes  
Enclosed: No  
Contiguous: Yes  
Permitted: Yes  
Wet space: No  
Addition: No  
Conversion: No

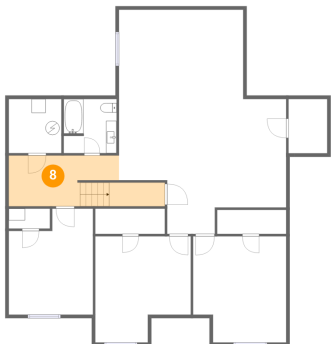
7 Floor 1 - Recreation Room



Dimensions: 23'11" x 32'0"  
Area: 596 sq. ft  
Counted as living area: Yes

Heated: Yes  
Finished: Yes  
Enclosed: Yes  
Contiguous: Yes  
Permitted: Yes  
Wet space: No  
Addition: No  
Conversion: No

8 Floor 1 - Hall



Dimensions: 15'9" x 7'3"  
Area: 135 sq. ft  
Counted as living area: Yes

Heated: Yes  
Finished: Yes  
Enclosed: Yes  
Contiguous: Yes  
Permitted: Yes  
Wet space: No  
Addition: No  
Conversion: No

9 Floor 2 - W.I.C.



Dimensions: 4'4" x 7'0"  
Area: 31 sq. ft  
Counted as living area: Yes

Heated: Yes  
Finished: Yes  
Enclosed: Yes  
Contiguous: Yes  
Permitted: Yes  
Wet space: No  
Addition: No  
Conversion: No

10 Floor 2 - W.I.C.



Dimensions: 4'1" x 7'0"  
Area: 29 sq. ft  
Counted as living area: Yes

Heated: Yes  
Finished: Yes  
Enclosed: Yes  
Contiguous: Yes  
Permitted: Yes  
Wet space: No  
Addition: No  
Conversion: No

11 Floor 2 - Garage



Dimensions: 34'0" x 29'8"  
Area: 956 sq. ft  
Counted as living area: No

Heated: No  
Finished: No  
Enclosed: Yes  
Contiguous: Yes  
Permitted: Yes  
Wet space: No  
Addition: No  
Conversion: No



## 12 Floor 2 - Primary Bedroom



Dimensions: 12'2" x 13'1"  
Area: 160 sq. ft  
Counted as living area: Yes

Heated: Yes  
Finished: Yes  
Enclosed: Yes  
Contiguous: Yes  
Permitted: Yes  
Wet space: No  
Addition: No  
Conversion: No

## 13 Floor 2 - Kitchen



Dimensions: 13'7" x 14'9"  
Area: 198 sq. ft  
Counted as living area: Yes

Heated: Yes  
Finished: Yes  
Enclosed: Yes  
Contiguous: Yes  
Permitted: Yes  
Wet space: No  
Addition: No  
Conversion: No

## 14 Floor 2 - Primary Bath



Dimensions: 12'2" x 11'3"  
Area: 134 sq. ft  
Counted as living area: Yes

Heated: Yes  
Finished: Yes  
Enclosed: Yes  
Contiguous: Yes  
Permitted: Yes  
Wet space: Yes  
Addition: No  
Conversion: No

15 Floor 2 - Foyer



Dimensions: 7'8" x 6'2"  
Area: 48 sq. ft  
Counted as living area: Yes

Heated: Yes  
Finished: Yes  
Enclosed: Yes  
Contiguous: Yes  
Permitted: Yes  
Wet space: No  
Addition: No  
Conversion: No

16 Floor 2 - Hall



Dimensions: 20'10" x 9'5"  
Area: 100 sq. ft  
Counted as living area: Yes

Heated: Yes  
Finished: Yes  
Enclosed: Yes  
Contiguous: Yes  
Permitted: Yes  
Wet space: No  
Addition: No  
Conversion: No

17 Floor 2 - Hall



Dimensions: 3'1" x 7'8"  
Area: 24 sq. ft  
Counted as living area: Yes

Heated: Yes  
Finished: Yes  
Enclosed: Yes  
Contiguous: Yes  
Permitted: Yes  
Wet space: No  
Addition: No  
Conversion: No

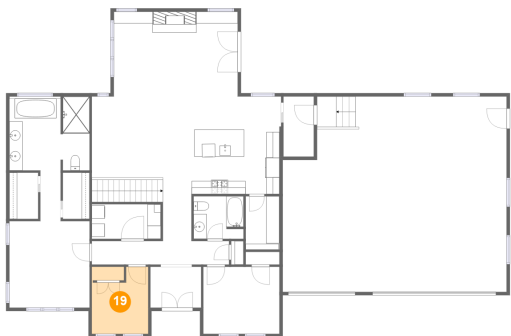
18 Floor 2 - Hall



Dimensions: 4'7" x 9'1"  
Area: 42 sq. ft  
Counted as living area: Yes

Heated: Yes  
Finished: Yes  
Enclosed: Yes  
Contiguous: Yes  
Permitted: Yes  
Wet space: No  
Addition: No  
Conversion: No

19 Floor 2 - Bedroom



Dimensions: 8'6" x 10'2"  
Area: 85 sq. ft  
Counted as living area: Yes

Heated: Yes  
Finished: Yes  
Enclosed: Yes  
Contiguous: Yes  
Permitted: Yes  
Wet space: No  
Addition: No  
Conversion: No

20 Floor 2 - Bedroom



Dimensions: 11'6" x 10'2"  
Area: 117 sq. ft  
Counted as living area: Yes

Heated: Yes  
Finished: Yes  
Enclosed: Yes  
Contiguous: Yes  
Permitted: Yes  
Wet space: No  
Addition: No  
Conversion: No

21 Floor 2 - Bath



Dimensions: 7'7" x 6'5"  
Area: 48 sq. ft  
Counted as living area: Yes

Heated: Yes  
Finished: Yes  
Enclosed: Yes  
Contiguous: Yes  
Permitted: Yes  
Wet space: Yes  
Addition: No  
Conversion: No

22 Floor 2 - Laundry



Dimensions: 10'6" x 5'3"  
Area: 55 sq. ft  
Counted as living area: Yes

Heated: Yes  
Finished: Yes  
Enclosed: Yes  
Contiguous: Yes  
Permitted: Yes  
Wet space: No  
Addition: No  
Conversion: No

23 Floor 2 - Dining Area



Dimensions: 15'2" x 16'0"  
Area: 243 sq. ft  
Counted as living area: Yes

Heated: Yes  
Finished: Yes  
Enclosed: Yes  
Contiguous: Yes  
Permitted: Yes  
Wet space: No  
Addition: No  
Conversion: No

## 24 Floor 2 - Living Room



Dimensions: 18'10" x 12'10"  
Area: 242 sq. ft  
Counted as living area: Yes

Heated: Yes  
Finished: Yes  
Enclosed: Yes  
Contiguous: Yes  
Permitted: Yes  
Wet space: No  
Addition: No  
Conversion: No

## 25 Floor 2 - Pantry



Dimensions: 5'1" x 8'1"  
Area: 41 sq. ft  
Counted as living area: Yes

Heated: Yes  
Finished: Yes  
Enclosed: Yes  
Contiguous: Yes  
Permitted: Yes  
Wet space: No  
Addition: No  
Conversion: No