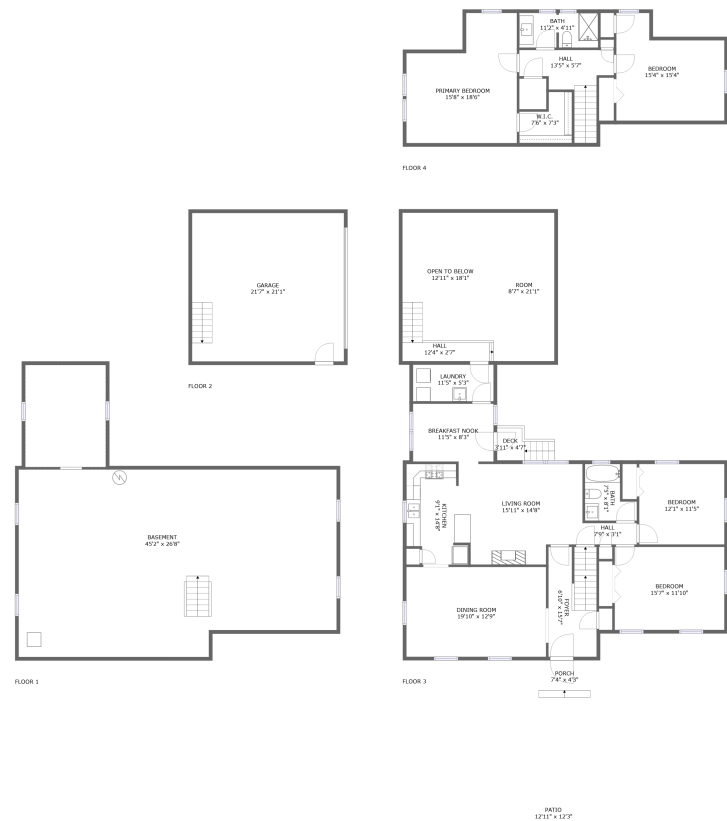




Home report


140 Piney Woods Dr,Jim Thorpe,PA,US




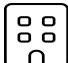
Property summary


 **1** Garages


 **4** Bedrooms

 **2** Bathrooms

 **0** Half baths

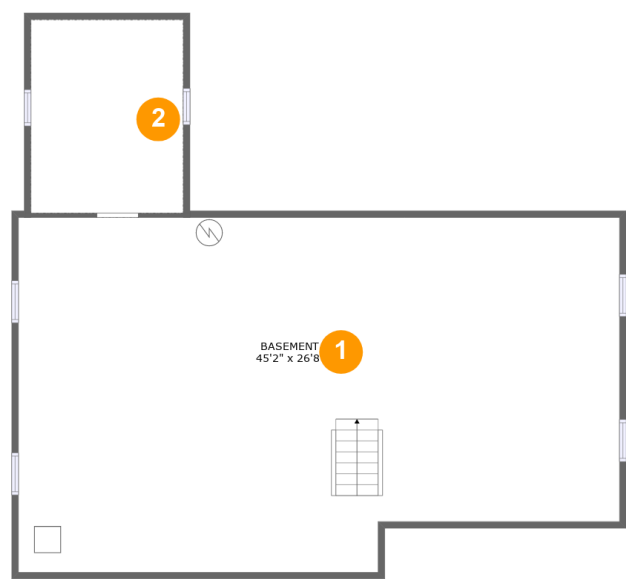
 **4** Floors

 **2,039** Gross living area sqft

 **4,746** Total sqft

Home report

140 Piney Woods Dr,Jim Thorpe,PA,US



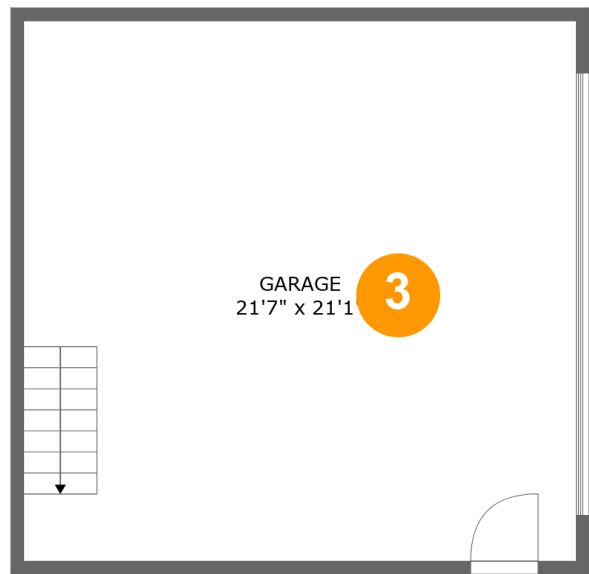
Room dimensions

Floor 1 Total sqft: 1392 Living area: 0

#		Dimensions	sqft	Counted as living area
1	Basement	45'2" x 26'8"	1134 sq. ft	No
2	Crawl Space	11'5" x 14'6"	167 sq. ft	No

Home report

140 Piney Woods Dr,Jim Thorpe,PA,US



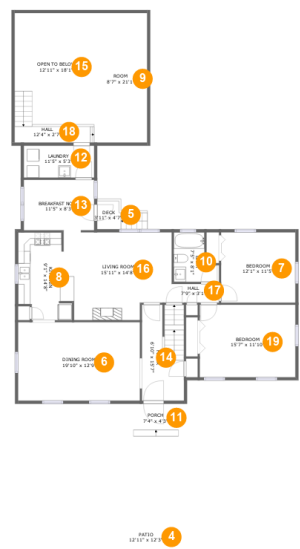
Room dimensions

Floor 2 Total sqft: 499 Living area: 0

#		Dimensions	sqft	Counted as living area
3	Garage	21'7" x 21'1"	455 sq. ft	No

Home report

140 Piney Woods Dr,Jim Thorpe,PA,US



Room dimensions

Floor 3

Total sqft: 2103

Living area: 1418

#		Dimensions	sqft	Counted as living area
4	Patio	12'11" x 12'3"	132 sq. ft	No
5	Deck	3'11" x 4'7"	29 sq. ft	No
6	Dining Room	19'10" x 12'9"	253 sq. ft	Yes
7	Bedroom	12'1" x 11'5"	139 sq. ft	Yes
8	Kitchen	9'1" x 14'8"	122 sq. ft	Yes
9	Room	8'7" x 21'1"	182 sq. ft	No
10	Bath	7'5" x 8'1"	47 sq. ft	Yes
11	Porch	7'4" x 4'3"	31 sq. ft	No
12	Laundry	11'5" x 5'3"	60 sq. ft	Yes
13	Breakfast Nook	11'5" x 8'3"	94 sq. ft	Yes
14	Foyer	6'10" x 15'7"	105 sq. ft	Yes

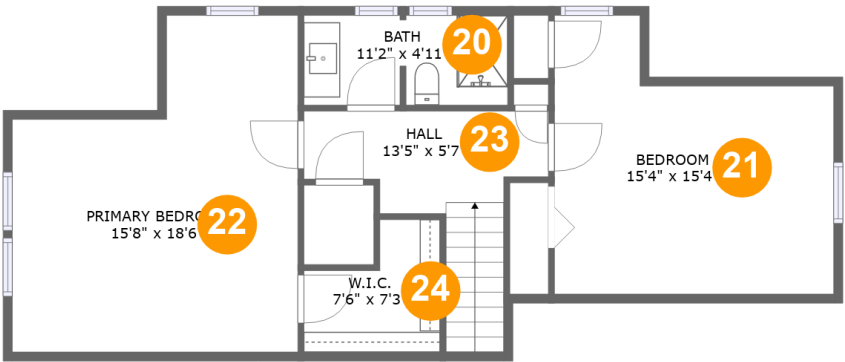
Home report

140 Piney Woods Dr,Jim Thorpe,PA,US

#		Dimensions	sqft	Counted as living area
15	Open To Below	12'11" x 18'1"	219 sq. ft	No
16	Living Room	15'11" x 14'8"	213 sq. ft	Yes
17	Hall	7'9" x 3'1"	23 sq. ft	Yes
18	Hall	12'4" x 2'7"	54 sq. ft	No
19	Bedroom	15'7" x 11'10"	184 sq. ft	Yes

Home report

140 Piney Woods Dr,Jim Thorpe,PA,US

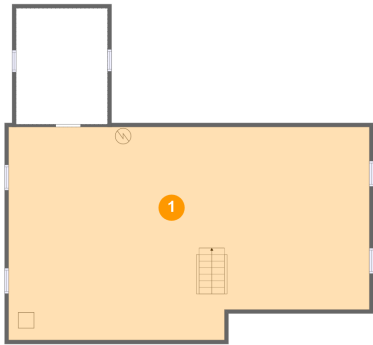


Room dimensions

Floor 4 Total sqft: 752 Living area: 621

#		Dimensions	sqft	Counted as living area
20	Bath	11'2" x 4'11"	54 sq. ft	Yes
21	Bedroom	15'4" x 15'4"	133 sq. ft	Yes
22	Primary Bedroom	15'8" x 18'6"	224 sq. ft	Yes
23	Hall	13'5" x 5'7"	87 sq. ft	Yes
24	W.I.C.	7'6" x 7'3"	34 sq. ft	Yes

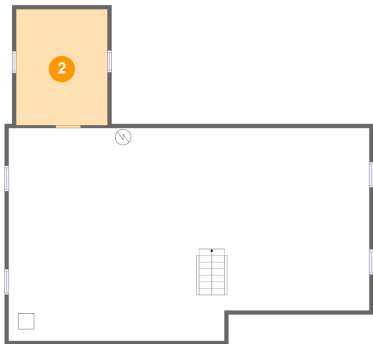
1 Floor 1 - Basement



Dimensions: 45'2" x 26'8"
Area: 1134 sq. ft
Counted as living area: No

Heated: Yes
Finished: No
Enclosed: Yes
Contiguous: Yes
Permitted: Yes
Wet space: No
Addition: No
Conversion: No

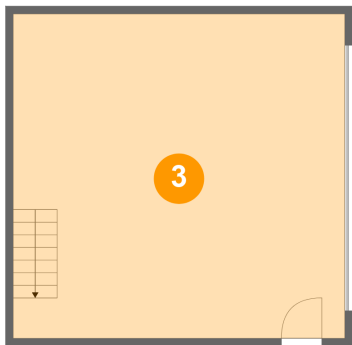
2 Floor 1 - Crawl Space



Dimensions: 11'5" x 14'6"
Area: 167 sq. ft
Counted as living area: No

Heated: No
Finished: No
Enclosed: No
Contiguous: Yes
Permitted: No
Wet space: No
Addition: No
Conversion: No

3 Floor 2 - Garage



Dimensions: 21'7" x 21'1"
Area: 455 sq. ft
Counted as living area: No

Heated: No
Finished: No
Enclosed: Yes
Contiguous: Yes
Permitted: Yes
Wet space: No
Addition: No
Conversion: No

4 Floor 3 - Patio



Dimensions: 12'11" x 12'3"
Area: 132 sq. ft
Counted as living area: No

Heated: No
Finished: Yes
Enclosed: No
Contiguous: Yes
Permitted: Yes
Wet space: No
Addition: No
Conversion: No

5 Floor 3 - Deck



Dimensions: 3'11" x 4'7"
Area: 29 sq. ft
Counted as living area: No

Heated: No
Finished: Yes
Enclosed: No
Contiguous: Yes
Permitted: Yes
Wet space: No
Addition: No
Conversion: No

6 Floor 3 - Dining Room



Dimensions: 19'10" x 12'9"
Area: 253 sq. ft
Counted as living area: Yes

Heated: Yes
Finished: Yes
Enclosed: Yes
Contiguous: Yes
Permitted: Yes
Wet space: No
Addition: No
Conversion: No

7 Floor 3 - Bedroom



Dimensions: 12'1" x 11'5"
Area: 139 sq. ft
Counted as living area: Yes

Heated: Yes
Finished: Yes
Enclosed: Yes
Contiguous: Yes
Permitted: Yes
Wet space: No
Addition: No
Conversion: No

8 Floor 3 - Kitchen



Dimensions: 9'1" x 14'8"
Area: 122 sq. ft
Counted as living area: Yes

Heated: Yes
Finished: Yes
Enclosed: Yes
Contiguous: Yes
Permitted: Yes
Wet space: No
Addition: No
Conversion: No

9 Floor 3 - Room



Dimensions: 8'7" x 21'1"
Area: 182 sq. ft
Counted as living area: No

Heated: Yes
Finished: No
Enclosed: Yes
Contiguous: Yes
Permitted: Yes
Wet space: No
Addition: No
Conversion: No

10 Floor 3 - Bath



Dimensions: 7'5" x 8'1"
Area: 47 sq. ft
Counted as living area: Yes

Heated: Yes
Finished: Yes
Enclosed: Yes
Contiguous: Yes
Permitted: Yes
Wet space: Yes
Addition: No
Conversion: No

11 Floor 3 - Porch



Dimensions: 7'4" x 4'3"
Area: 31 sq. ft
Counted as living area: No

Heated: No
Finished: Yes
Enclosed: No
Contiguous: Yes
Permitted: Yes
Wet space: No
Addition: No
Conversion: No

12 Floor 3 - Laundry



Dimensions: 11'5" x 5'3"
Area: 60 sq. ft
Counted as living area: Yes

Heated: Yes
Finished: Yes
Enclosed: Yes
Contiguous: Yes
Permitted: Yes
Wet space: No
Addition: No
Conversion: No

13 Floor 3 - Breakfast Nook



Dimensions: 11'5" x 8'3"
Area: 94 sq. ft
Counted as living area: Yes

Heated: Yes
Finished: Yes
Enclosed: Yes
Contiguous: Yes
Permitted: Yes
Wet space: No
Addition: No
Conversion: No

14 Floor 3 - Foyer



Dimensions: 6'10" x 15'7"
Area: 105 sq. ft
Counted as living area: Yes

Heated: Yes
Finished: Yes
Enclosed: Yes
Contiguous: Yes
Permitted: Yes
Wet space: No
Addition: No
Conversion: No

15 Floor 3 - Open To Below



Dimensions: 12'11" x 18'1"
Area: 219 sq. ft
Counted as living area: No

Heated: No
Finished: No
Enclosed: No
Contiguous: Yes
Permitted: No
Wet space: No
Addition: No
Conversion: No

16 Floor 3 - Living Room



Dimensions: 15'11" x 14'8"
Area: 213 sq. ft
Counted as living area: Yes

Heated: Yes
Finished: Yes
Enclosed: Yes
Contiguous: Yes
Permitted: Yes
Wet space: No
Addition: No
Conversion: No

17 Floor 3 - Hall



Dimensions: 7'9" x 3'1"
Area: 23 sq. ft
Counted as living area: Yes

Heated: Yes
Finished: Yes
Enclosed: Yes
Contiguous: Yes
Permitted: Yes
Wet space: No
Addition: No
Conversion: No

18 Floor 3 - Hall



Dimensions: 12'4" x 2'7"
Area: 54 sq. ft
Counted as living area: No

Heated: Yes
Finished: No
Enclosed: Yes
Contiguous: Yes
Permitted: Yes
Wet space: No
Addition: No
Conversion: No

19 Floor 3 - Bedroom



Dimensions: 15'7" x 11'10"
Area: 184 sq. ft
Counted as living area: Yes

Heated: Yes
Finished: Yes
Enclosed: Yes
Contiguous: Yes
Permitted: Yes
Wet space: No
Addition: No
Conversion: No

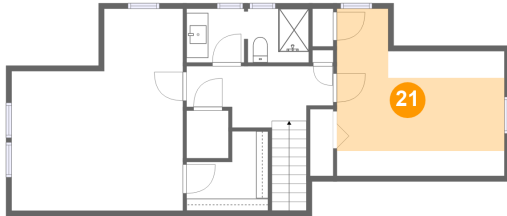
20 Floor 4 - Bath



Dimensions: 11'2" x 4'11"
Area: 54 sq. ft
Counted as living area: Yes

Heated: Yes
Finished: Yes
Enclosed: Yes
Contiguous: Yes
Permitted: Yes
Wet space: Yes
Addition: No
Conversion: No

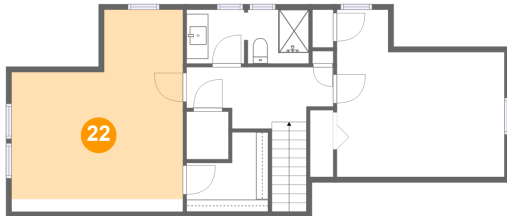
21 Floor 4 - Bedroom



Dimensions: 15'4" x 15'4"
Area: 133 sq. ft
Counted as living area: Yes

Heated: Yes
Finished: Yes
Enclosed: Yes
Contiguous: Yes
Permitted: Yes
Wet space: No
Addition: No
Conversion: No

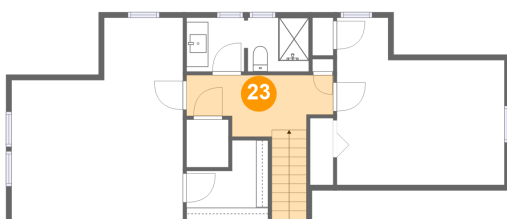
22 Floor 4 - Primary Bedroom



Dimensions: 15'8" x 18'6"
Area: 224 sq. ft
Counted as living area: Yes

Heated: Yes
Finished: Yes
Enclosed: Yes
Contiguous: Yes
Permitted: Yes
Wet space: No
Addition: No
Conversion: No

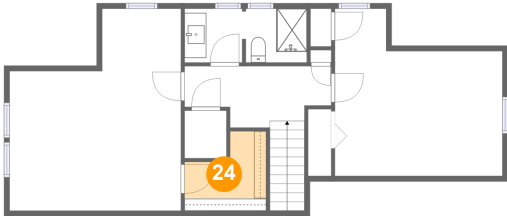
23 Floor 4 - Hall



Dimensions: 13'5" x 5'7"
Area: 87 sq. ft
Counted as living area: Yes

Heated: Yes
Finished: Yes
Enclosed: Yes
Contiguous: Yes
Permitted: Yes
Wet space: No
Addition: No
Conversion: No

24 Floor 4 - W.I.C.



Dimensions: 7'6" x 7'3"
Area: 34 sq. ft
Counted as living area: Yes

Heated: Yes
Finished: Yes
Enclosed: Yes
Contiguous: Yes
Permitted: Yes
Wet space: No
Addition: No
Conversion: No