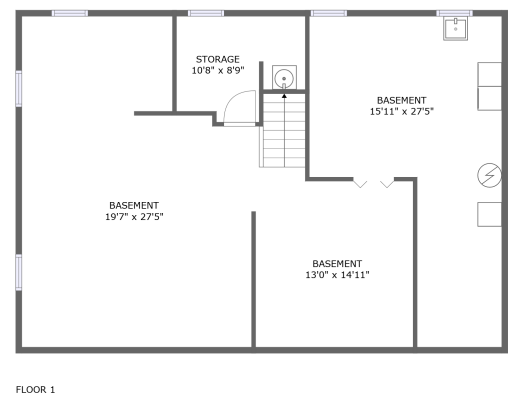
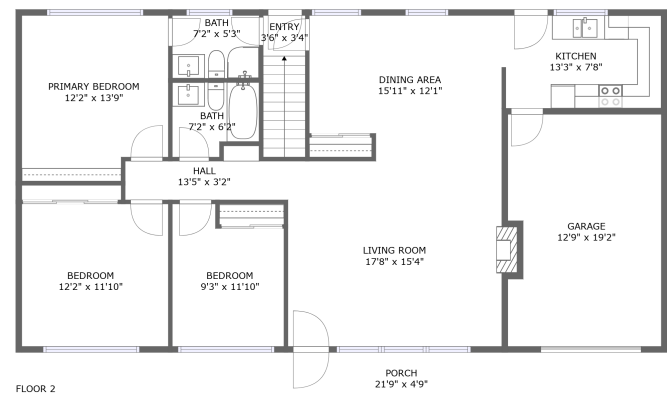




Home report


511 Peashway St,South Bend,IN,US




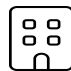
Property summary


 **1** Garages

 **3** Bedrooms

 **2** Bathrooms

 **0** Half baths

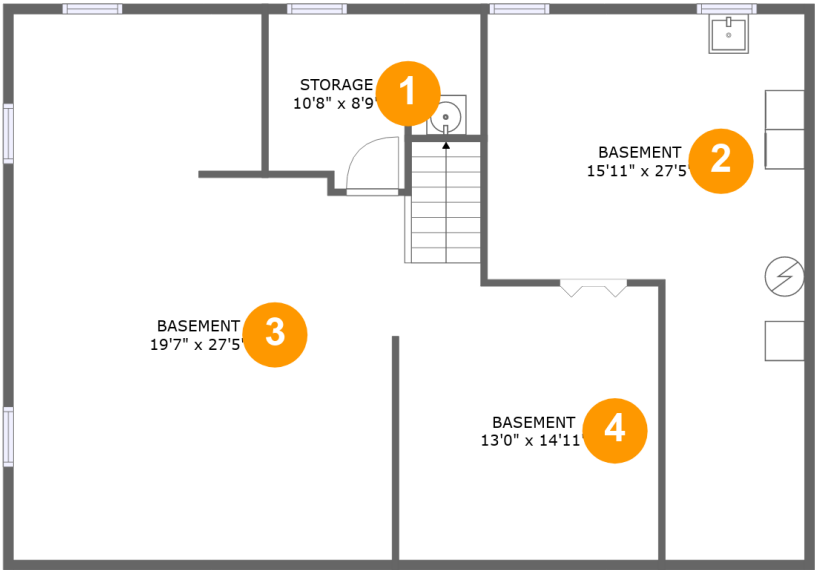
 **2** Floors

 **1,274** Gross living area sqft

 **2,798** Total sqft

Home report

511 Peashway St,South Bend,IN,US



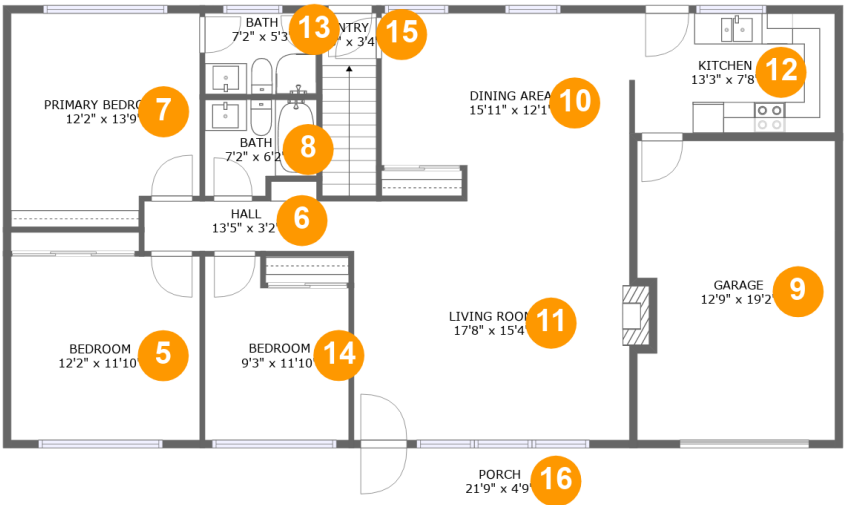
Room dimensions

Floor 1 Total sqft: 1160    Living area: 0

#		Dimensions	sqft	Counted as living area
1	Storage	10'8" x 8'9"	80 sq. ft	No
2	Basement	15'11" x 27'5"	311 sq. ft	No
3	Basement	19'7" x 27'5"	469 sq. ft	No
4	Basement	13'0" x 14'11"	206 sq. ft	No

Home report

511 Peashway St,South Bend,IN,US



Room dimensions

Floor 2 Total sqft: 1638    Living area: 1274

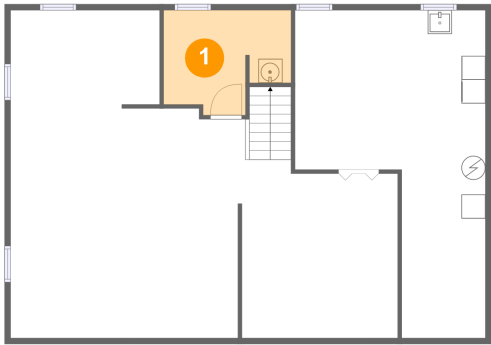
#		Dimensions	sqft	Counted as living area
5	Bedroom	12'2" x 11'10"	143 sq. ft	Yes
6	Hall	13'5" x 3'2"	47 sq. ft	Yes
7	Primary Bedroom	12'2" x 13'9"	159 sq. ft	Yes
8	Bath	7'2" x 6'2"	40 sq. ft	Yes
9	Garage	12'9" x 19'2"	238 sq. ft	No
10	Dining Area	15'11" x 12'1"	180 sq. ft	Yes
11	Living Room	17'8" x 15'4"	277 sq. ft	Yes
12	Kitchen	13'3" x 7'8"	101 sq. ft	Yes
13	Bath	7'2" x 5'3"	38 sq. ft	Yes
14	Bedroom	9'3" x 11'10"	98 sq. ft	Yes
15	Entry	3'6" x 3'4"	41 sq. ft	Yes

Home report

511 Peashway St,South Bend,IN,US

#		Dimensions	sqft	Counted as living area
16	Porch	21'9" x 4'9"	103 sq. ft	No

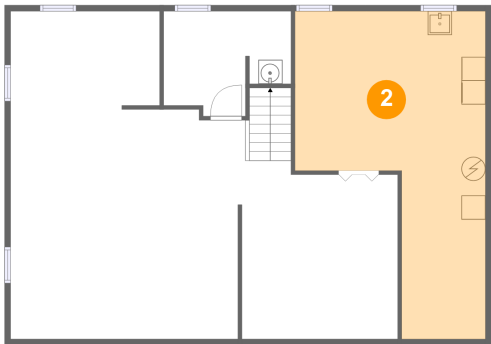
1 Floor 1 - Storage



Dimensions: 10'8" x 8'9"  
Area: 80 sq. ft  
Counted as living area: No

Heated: No  
Finished: No  
Enclosed: No  
Contiguous: Yes  
Permitted: Yes  
Wet space: No  
Addition: No  
Conversion: No

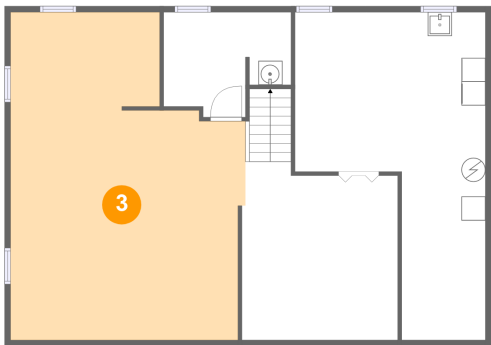
2 Floor 1 - Basement



Dimensions: 15'11" x 27'5"  
Area: 311 sq. ft  
Counted as living area: No

Heated: Yes  
Finished: No  
Enclosed: Yes  
Contiguous: Yes  
Permitted: Yes  
Wet space: No  
Addition: No  
Conversion: No

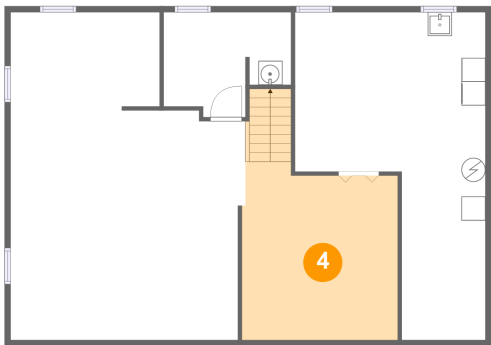
3 Floor 1 - Basement



Dimensions: 19'7" x 27'5"  
Area: 469 sq. ft  
Counted as living area: No

Heated: Yes  
Finished: No  
Enclosed: Yes  
Contiguous: Yes  
Permitted: Yes  
Wet space: No  
Addition: No  
Conversion: No

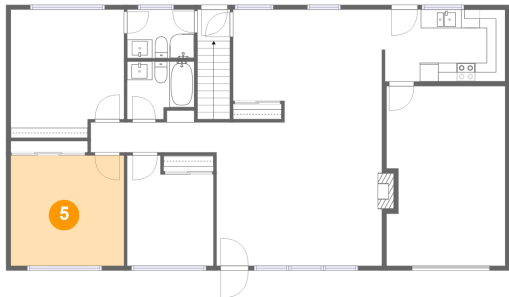
4 Floor 1 - Basement



Dimensions: 13'0" x 14'11"  
Area: 206 sq. ft  
Counted as living area: No

Heated: Yes  
Finished: No  
Enclosed: Yes  
Contiguous: Yes  
Permitted: Yes  
Wet space: No  
Addition: No  
Conversion: No

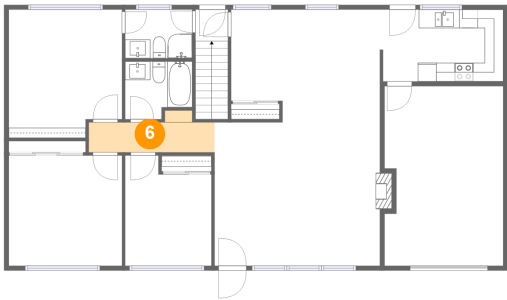
5 Floor 2 - Bedroom



Dimensions: 12'2" x 11'10"  
Area: 143 sq. ft  
Counted as living area: Yes

Heated: Yes  
Finished: Yes  
Enclosed: Yes  
Contiguous: Yes  
Permitted: Yes  
Wet space: No  
Addition: No  
Conversion: No

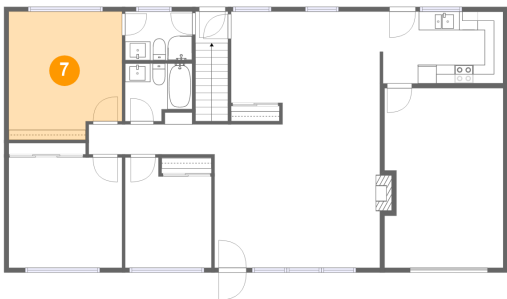
6 Floor 2 - Hall



Dimensions: 13'5" x 3'2"  
Area: 47 sq. ft  
Counted as living area: Yes

Heated: Yes  
Finished: Yes  
Enclosed: Yes  
Contiguous: Yes  
Permitted: Yes  
Wet space: No  
Addition: No  
Conversion: No

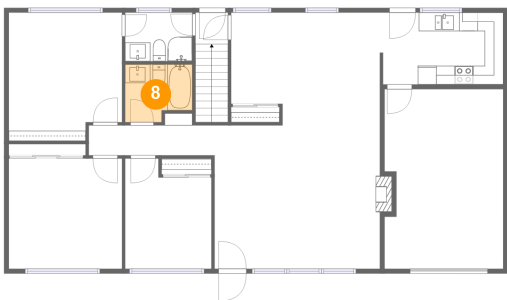
7 Floor 2 - Primary Bedroom



Dimensions: 12'2" x 13'9"  
Area: 159 sq. ft  
Counted as living area: Yes

Heated: Yes  
Finished: Yes  
Enclosed: Yes  
Contiguous: Yes  
Permitted: Yes  
Wet space: No  
Addition: No  
Conversion: No

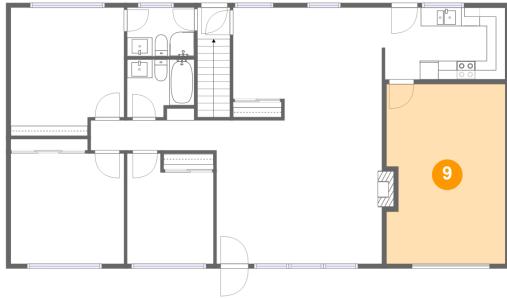
8 Floor 2 - Bath



Dimensions: 7'2" x 6'2"  
Area: 40 sq. ft  
Counted as living area: Yes

Heated: Yes  
Finished: Yes  
Enclosed: Yes  
Contiguous: Yes  
Permitted: Yes  
Wet space: Yes  
Addition: No  
Conversion: No

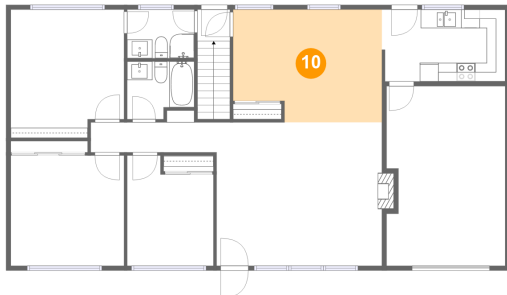
## 9 Floor 2 - Garage



Dimensions: 12'9" x 19'2"  
Area: 238 sq. ft  
Counted as living area: No

Heated: No  
Finished: No  
Enclosed: Yes  
Contiguous: Yes  
Permitted: Yes  
Wet space: No  
Addition: No  
Conversion: No

## 10 Floor 2 - Dining Area



Dimensions: 15'11" x 12'1"  
Area: 180 sq. ft  
Counted as living area: Yes

Heated: Yes  
Finished: Yes  
Enclosed: Yes  
Contiguous: Yes  
Permitted: Yes  
Wet space: No  
Addition: No  
Conversion: No

## 11 Floor 2 - Living Room

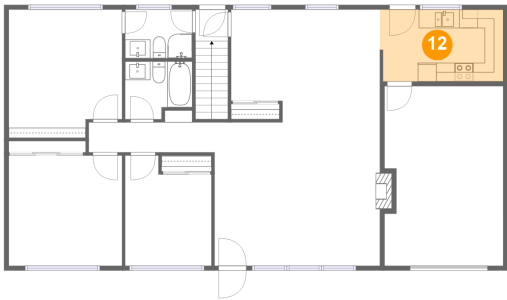


Dimensions: 17'8" x 15'4"  
Area: 277 sq. ft  
Counted as living area: Yes

Heated: Yes  
Finished: Yes  
Enclosed: Yes  
Contiguous: Yes  
Permitted: Yes  
Wet space: No  
Addition: No  
Conversion: No



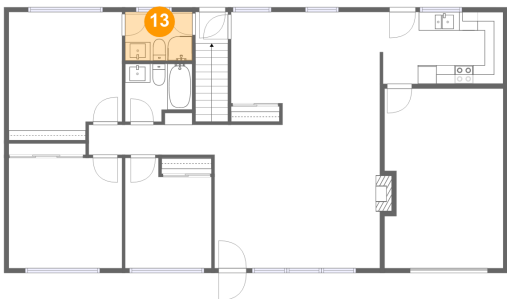
12 Floor 2 - Kitchen



Dimensions: 13'3" x 7'8"  
Area: 101 sq. ft  
Counted as living area: Yes

Heated: Yes  
Finished: Yes  
Enclosed: Yes  
Contiguous: Yes  
Permitted: Yes  
Wet space: No  
Addition: No  
Conversion: No

13 Floor 2 - Bath



Dimensions: 7'2" x 5'3"  
Area: 38 sq. ft  
Counted as living area: Yes

Heated: Yes  
Finished: Yes  
Enclosed: Yes  
Contiguous: Yes  
Permitted: Yes  
Wet space: Yes  
Addition: No  
Conversion: No

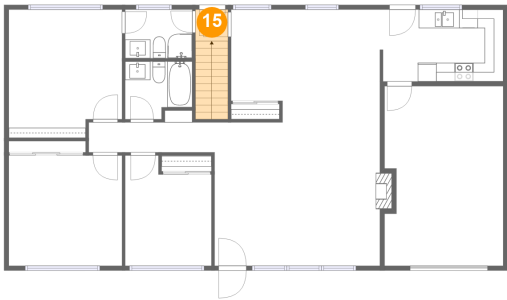
14 Floor 2 - Bedroom



Dimensions: 9'3" x 11'10"  
Area: 98 sq. ft  
Counted as living area: Yes

Heated: Yes  
Finished: Yes  
Enclosed: Yes  
Contiguous: Yes  
Permitted: Yes  
Wet space: No  
Addition: No  
Conversion: No

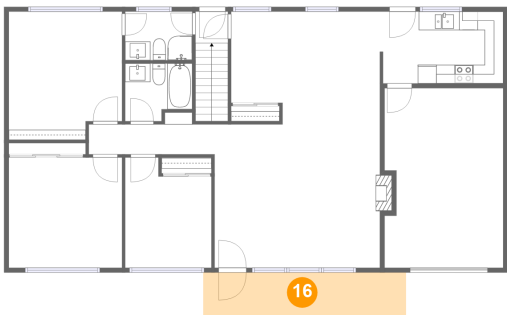
15 Floor 2 - Entry



Dimensions: 3'6" x 3'4"  
Area: 41 sq. ft  
Counted as living area: Yes

Heated: Yes  
Finished: Yes  
Enclosed: Yes  
Contiguous: Yes  
Permitted: Yes  
Wet space: No  
Addition: No  
Conversion: No

16 Floor 2 - Porch



Dimensions: 21'9" x 4'9"  
Area: 103 sq. ft  
Counted as living area: No

Heated: No  
Finished: Yes  
Enclosed: No  
Contiguous: Yes  
Permitted: Yes  
Wet space: No  
Addition: No  
Conversion: No