

Home report

2135 Memorial Avenue Southwest, Raleigh Court, Roanoke,
Roanoke city, Virginia, United States, 24015



Property summary

 **0** Garages

 **4** Bedrooms

 **2** Bathrooms

 **0** Half baths

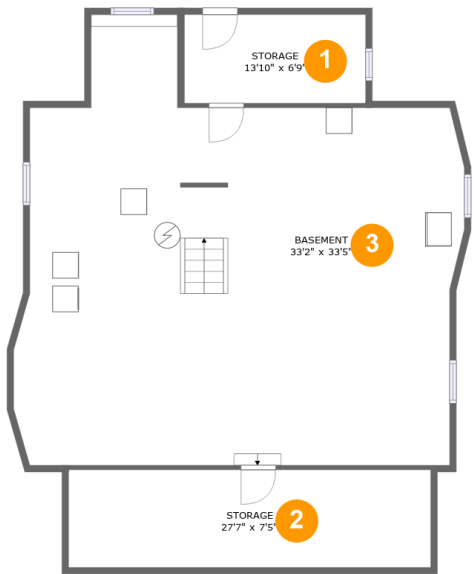
 **4** Floors

 **2,008** Gross living area sqft

 **4,696** Total sqft

Home report

2135 Memorial Avenue Southwest, Raleigh Court, Roanoke,
Roanoke city, Virginia, United States, 24015



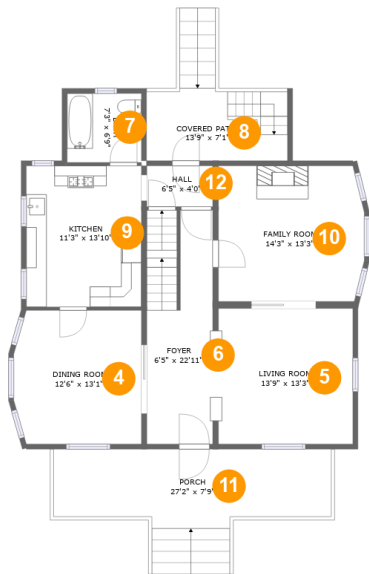
Room dimensions

Floor 1 Total sqft: 1331 Living area: 0

#		Dimensions	sqft	Counted as living area
1	Storage	13'10" x 6'9"	93 sq. ft	No
2	Storage	27'7" x 7'5"	205 sq. ft	No
3	Basement	33'2" x 33'5"	939 sq. ft	No

Home report

2135 Memorial Avenue Southwest, Raleigh Court, Roanoke,
Roanoke city, Virginia, United States, 24015



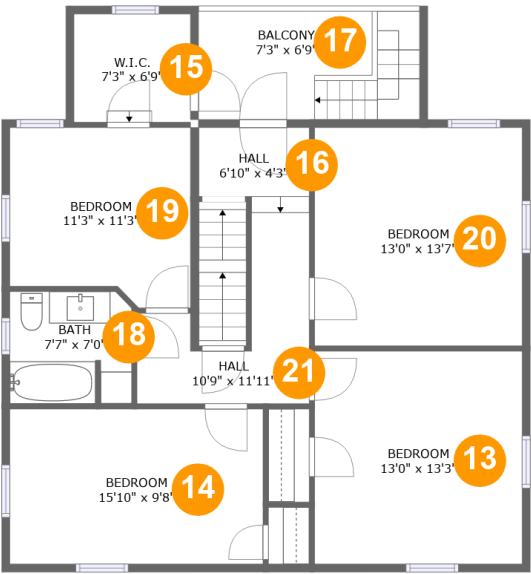
Room dimensions

Floor 2Total sqft: 1350 Living area: 1015

#		Dimensions	sqft	Counted as living area
4	Dining Room	12'6" x 13'1"	158 sq. ft	Yes
5	Living Room	13'9" x 13'3"	180 sq. ft	Yes
6	Foyer	6'5" x 22'11"	144 sq. ft	Yes
7	Bath	7'3" x 6'9"	49 sq. ft	Yes
8	Covered Patio	13'9" x 7'1"	98 sq. ft	No
9	Kitchen	11'3" x 13'10"	156 sq. ft	Yes
10	Family Room	14'3" x 13'3"	185 sq. ft	Yes
11	Porch	27'2" x 7'9"	237 sq. ft	No
12	Hall	6'5" x 4'0"	26 sq. ft	Yes

Home report

2135 Memorial Avenue Southwest, Raleigh Court, Roanoke,
Roanoke city, Virginia, United States, 24015

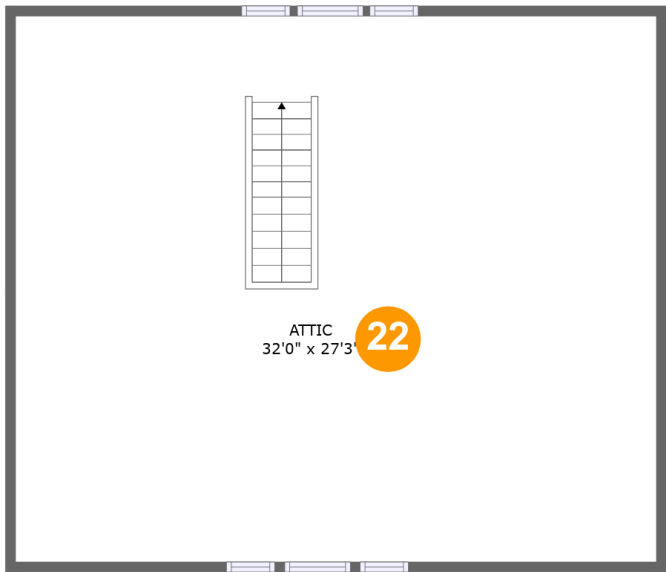


Room dimensions

Floor 3 Total sqft: 1084 Living area: 993

#		Dimensions	sqft	Counted as living area
13	Bedroom	13'0" x 13'3"	172 sq. ft	Yes
14	Bedroom	15'10" x 9'8"	153 sq. ft	Yes
15	W.I.C.	7'3" x 6'9"	49 sq. ft	Yes
16	Hall	6'10" x 4'3"	30 sq. ft	Yes
17	Balcony	7'3" x 6'9"	91 sq. ft	No
18	Bath	7'7" x 7'0"	52 sq. ft	Yes
19	Bedroom	11'3" x 11'3"	117 sq. ft	Yes
20	Bedroom	13'0" x 13'7"	176 sq. ft	Yes
21	Hall	10'9" x 11'11"	78 sq. ft	Yes

2135 Memorial Avenue Southwest, Raleigh Court, Roanoke,
Roanoke city, Virginia, United States, 24015



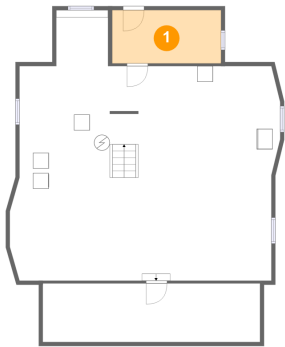
Room dimensions

Floor 4 Total sqft: 931 Living area: 0

#		Dimensions	sqft	Counted as living area
22	Attic	32'0" x 27'3"	382 sq. ft	No

2135 Memorial Avenue Southwest, Raleigh Court, Roanoke,
Roanoke city, Virginia, United States, 24015

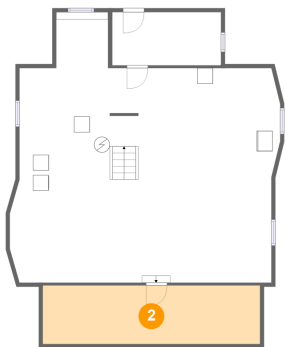
1 Floor 1 - Storage



Dimensions: 13'10" x 6'9"
Area: 93 sq. ft
Counted as living area: No

Heated: No
Finished: No
Enclosed: No
Contiguous: No
Permitted: Yes
Wet space: No
Addition: No
Conversion: No

2 Floor 1 - Storage



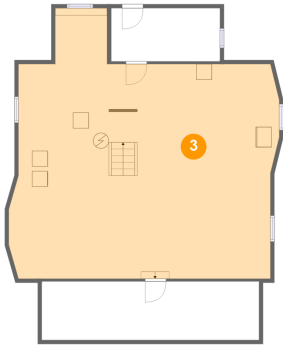
Dimensions: 27'7" x 7'5"
Area: 205 sq. ft
Counted as living area: No

Heated: No
Finished: No
Enclosed: No
Contiguous: No
Permitted: Yes
Wet space: No
Addition: No
Conversion: No

Home report

2135 Memorial Avenue Southwest, Raleigh Court, Roanoke,
Roanoke city, Virginia, United States, 24015

3 Floor 1 - Basement



Dimensions: 33'2" x 33'5"
Area: 939 sq. ft
Counted as living area: No

Heated: Yes
Finished: No
Enclosed: Yes
Contiguous: Yes
Permitted: Yes
Wet space: No
Addition: No
Conversion: No

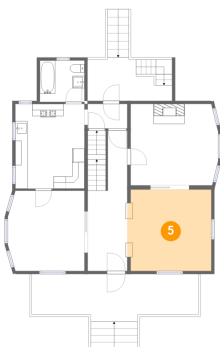
4 Floor 2 - Dining Room



Dimensions: 12'6" x 13'1"
Area: 158 sq. ft
Counted as living area: Yes

Heated: Yes
Finished: Yes
Enclosed: Yes
Contiguous: Yes
Permitted: Yes
Wet space: No
Addition: No
Conversion: No

5 Floor 2 - Living Room

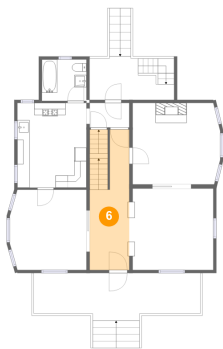


Dimensions: 13'9" x 13'3"
Area: 180 sq. ft
Counted as living area: Yes

Heated: Yes
Finished: Yes
Enclosed: Yes
Contiguous: Yes
Permitted: Yes
Wet space: No
Addition: No
Conversion: No

2135 Memorial Avenue Southwest, Raleigh Court, Roanoke,
Roanoke city, Virginia, United States, 24015

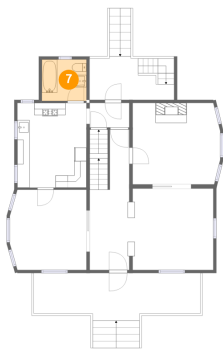
6 Floor 2 - Foyer



Dimensions: 6'5" x 22'11"
Area: 144 sq. ft
Counted as living area: Yes

Heated: Yes
Finished: Yes
Enclosed: Yes
Contiguous: Yes
Permitted: Yes
Wet space: No
Addition: No
Conversion: No

7 Floor 2 - Bath



Dimensions: 7'3" x 6'9"
Area: 49 sq. ft
Counted as living area: Yes

Heated: Yes
Finished: Yes
Enclosed: Yes
Contiguous: Yes
Permitted: Yes
Wet space: Yes
Addition: No
Conversion: No

8 Floor 2 - Covered Patio

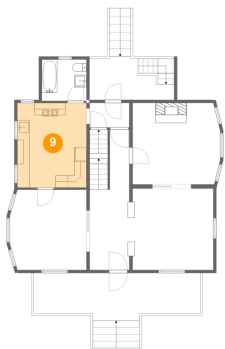


Dimensions: 13'9" x 7'1"
Area: 98 sq. ft
Counted as living area: No

Heated: No
Finished: Yes
Enclosed: No
Contiguous: Yes
Permitted: Yes
Wet space: No
Addition: No
Conversion: No

2135 Memorial Avenue Southwest, Raleigh Court, Roanoke,
Roanoke city, Virginia, United States, 24015

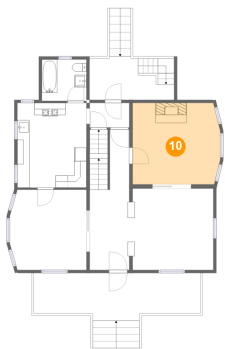
9 Floor 2 - Kitchen



Dimensions: 11'3" x 13'10"
Area: 156 sq. ft
Counted as living area: Yes

Heated: Yes
Finished: Yes
Enclosed: Yes
Contiguous: Yes
Permitted: Yes
Wet space: No
Addition: No
Conversion: No

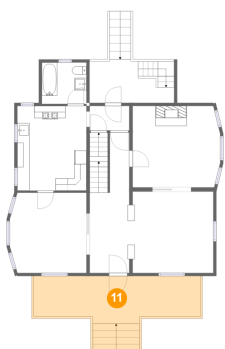
10 Floor 2 - Family Room



Dimensions: 14'3" x 13'3"
Area: 185 sq. ft
Counted as living area: Yes

Heated: Yes
Finished: Yes
Enclosed: Yes
Contiguous: Yes
Permitted: Yes
Wet space: No
Addition: No
Conversion: No

11 Floor 2 - Porch

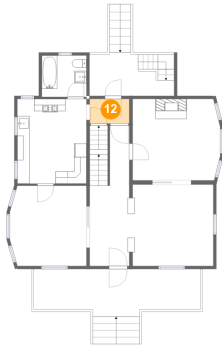


Dimensions: 27'2" x 7'9"
Area: 237 sq. ft
Counted as living area: No

Heated: No
Finished: Yes
Enclosed: No
Contiguous: Yes
Permitted: Yes
Wet space: No
Addition: No
Conversion: No

2135 Memorial Avenue Southwest, Raleigh Court, Roanoke,
Roanoke city, Virginia, United States, 24015

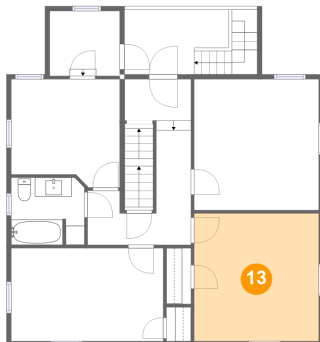
12 Floor 2 - Hall



Dimensions: 6'5" x 4'0"
Area: 26 sq. ft
Counted as living area: Yes

Heated: Yes
Finished: Yes
Enclosed: Yes
Contiguous: Yes
Permitted: Yes
Wet space: No
Addition: No
Conversion: No

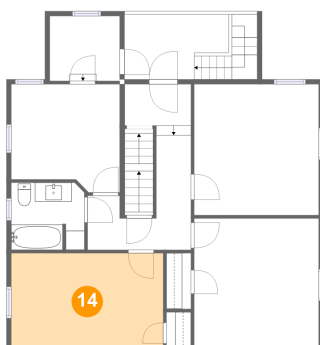
13 Floor 3 - Bedroom



Dimensions: 13'0" x 13'3"
Area: 172 sq. ft
Counted as living area: Yes

Heated: Yes
Finished: Yes
Enclosed: Yes
Contiguous: Yes
Permitted: Yes
Wet space: No
Addition: No
Conversion: No

14 Floor 3 - Bedroom

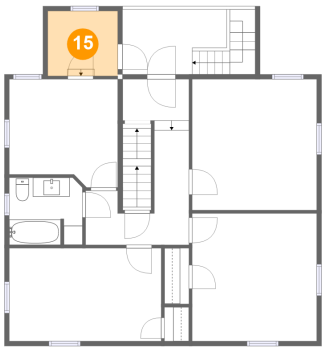


Dimensions: 15'10" x 9'8"
Area: 153 sq. ft
Counted as living area: Yes

Heated: Yes
Finished: Yes
Enclosed: Yes
Contiguous: Yes
Permitted: Yes
Wet space: No
Addition: No
Conversion: No

2135 Memorial Avenue Southwest, Raleigh Court, Roanoke,
Roanoke city, Virginia, United States, 24015

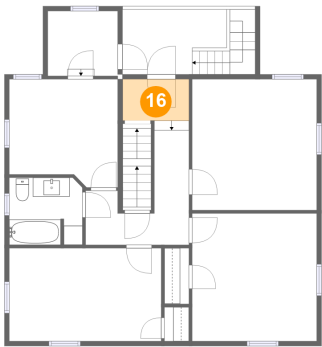
15 Floor 3 - W.I.C.



Dimensions: 7'3" x 6'9"
Area: 49 sq. ft
Counted as living area: Yes

Heated: Yes
Finished: Yes
Enclosed: Yes
Contiguous: Yes
Permitted: Yes
Wet space: No
Addition: No
Conversion: No

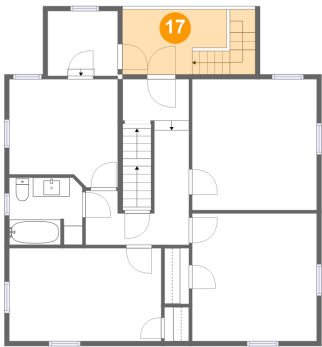
16 Floor 3 - Hall



Dimensions: 6'10" x 4'3"
Area: 30 sq. ft
Counted as living area: Yes

Heated: Yes
Finished: Yes
Enclosed: Yes
Contiguous: Yes
Permitted: Yes
Wet space: No
Addition: No
Conversion: No

17 Floor 3 - Balcony

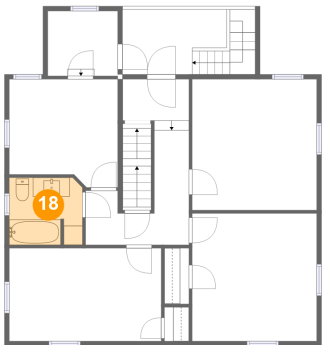


Dimensions: 7'3" x 6'9"
Area: 91 sq. ft
Counted as living area: No

Heated: No
Finished: Yes
Enclosed: No
Contiguous: Yes
Permitted: Yes
Wet space: No
Addition: No
Conversion: No

2135 Memorial Avenue Southwest, Raleigh Court, Roanoke,
Roanoke city, Virginia, United States, 24015

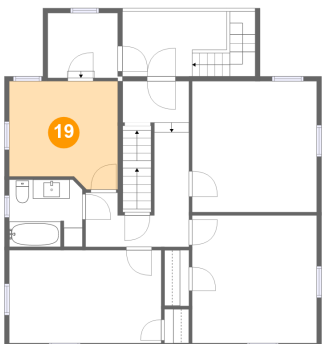
18 Floor 3 - Bath



Dimensions: 7'7" x 7'0"
Area: 52 sq. ft
Counted as living area: Yes

Heated: Yes
Finished: Yes
Enclosed: Yes
Contiguous: Yes
Permitted: Yes
Wet space: Yes
Addition: No
Conversion: No

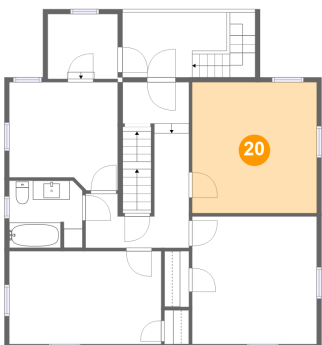
19 Floor 3 - Bedroom



Dimensions: 11'3" x 11'3"
Area: 117 sq. ft
Counted as living area: Yes

Heated: Yes
Finished: Yes
Enclosed: Yes
Contiguous: Yes
Permitted: Yes
Wet space: No
Addition: No
Conversion: No

20 Floor 3 - Bedroom

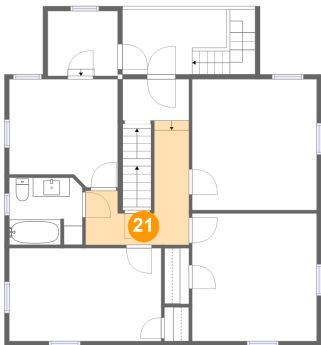


Dimensions: 13'0" x 13'7"
Area: 176 sq. ft
Counted as living area: Yes

Heated: Yes
Finished: Yes
Enclosed: Yes
Contiguous: Yes
Permitted: Yes
Wet space: No
Addition: No
Conversion: No

2135 Memorial Avenue Southwest, Raleigh Court, Roanoke,
Roanoke city, Virginia, United States, 24015

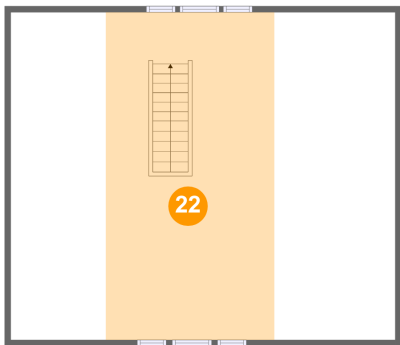
21 Floor 3 - Hall



Dimensions: 10'9" x 11'11"
Area: 78 sq. ft
Counted as living area: Yes

Heated: Yes
Finished: Yes
Enclosed: Yes
Contiguous: Yes
Permitted: Yes
Wet space: No
Addition: No
Conversion: No

22 Floor 4 - Attic



Dimensions: 32'0" x 27'3"
Area: 382 sq. ft
Counted as living area: No

Heated: No
Finished: No
Enclosed: Yes
Contiguous: Yes
Permitted: Yes
Wet space: No
Addition: No
Conversion: No