

# 9002 East 87th Street South, Derby, Sedgwick County, Kansas, United States, 67037



## Property summary


 **1** Garages

 **5** Bedrooms

 **3** Bathrooms

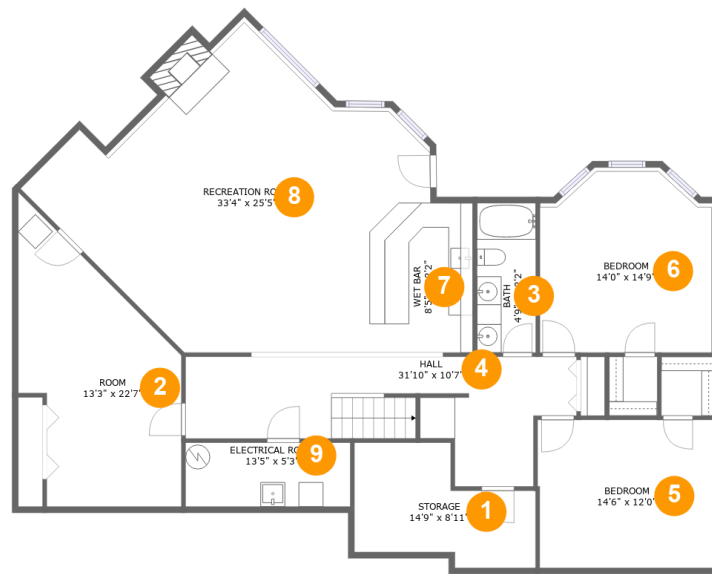
 **0** Half baths

 **2** Floors

 **3,648** Gross living area sqft

 **4,517** Total sqft

# 9002 East 87th Street South, Derby, Sedgwick County, Kansas, United States, 67037



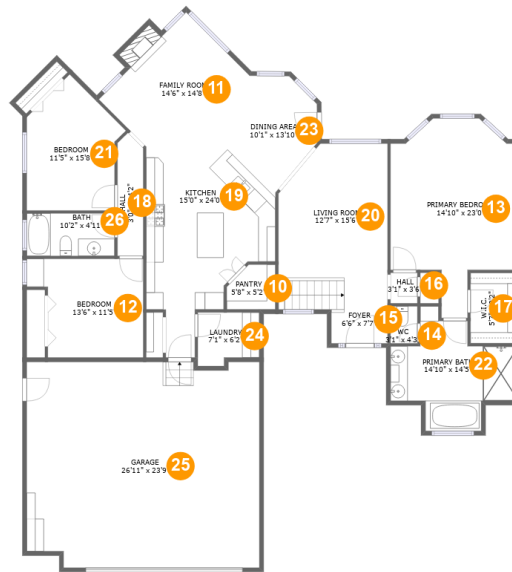
## Room dimensions

### Floor 1

Total sqft: 1952 Living area: 1749

#		Dimensions	sqft	Counted as living area
1	Storage	14'9" x 8'11"	113 sq. ft	No
2	Room	13'3" x 22'7"	231 sq. ft	Yes
3	Bath	4'9" x 12'2"	58 sq. ft	Yes
4	Hall	31'10" x 10'7"	228 sq. ft	Yes
5	Bedroom	14'6" x 12'0"	174 sq. ft	Yes
6	Bedroom	14'0" x 14'9"	199 sq. ft	Yes
7	Wet Bar	8'5" x 12'2"	100 sq. ft	Yes
8	Recreation Room	33'4" x 25'5"	546 sq. ft	Yes
9	Electrical Room	13'5" x 5'3"	70 sq. ft	No

# 9002 East 87th Street South, Derby, Sedgwick County, Kansas, United States, 67037



## Room dimensions

Floor 2

Total sqft: 2565 Living area: 1899

#		Dimensions	sqft	Counted as living area
10	Pantry	5'8" x 5'2"	26 sq. ft	Yes
11	Family Room	14'6" x 14'8"	181 sq. ft	Yes
12	Bedroom	13'6" x 11'5"	134 sq. ft	Yes
13	Primary Bedroom	14'10" x 23'0"	257 sq. ft	Yes
14	WC	3'1" x 4'3"	13 sq. ft	Yes
15	Foyer	6'6" x 7'7"	72 sq. ft	Yes
16	Hall	3'1" x 3'6"	11 sq. ft	Yes
17	W.I.C.	5'7" x 8'2"	45 sq. ft	Yes
18	Hall	3'0" x 14'2"	40 sq. ft	Yes
19	Kitchen	15'0" x 24'0"	250 sq. ft	Yes
20	Living Room	12'7" x 15'6"	182 sq. ft	Yes

Scan captured on Fri, 28 Mar 2025 15:01:51 GMT

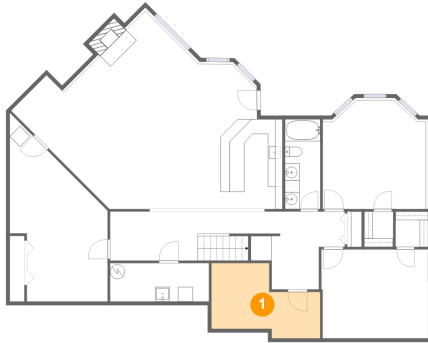
Information is calculated by Cubicasa technology deemed highly reliable but not guaranteed.

**9002 East 87th Street South, Derby, Sedgwick County,  
Kansas, United States, 67037**

#		Dimensions	sqft	Counted as living area
21	Bedroom	11'5" x 15'8"	136 sq. ft	Yes
22	Primary Bath	14'10" x 14'5"	136 sq. ft	Yes
23	Dining Area	10'1" x 13'10"	98 sq. ft	Yes
24	Laundry	7'1" x 6'2"	40 sq. ft	Yes
25	Garage	26'11" x 23'9"	628 sq. ft	No
26	Bath	10'2" x 4'11"	50 sq. ft	Yes

9002 East 87th Street South, Derby, Sedgwick County,  
Kansas, United States, 67037

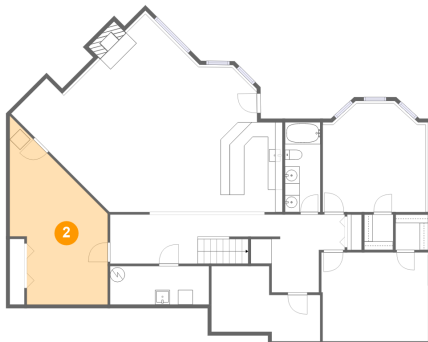
## 1 Floor 1 - Storage



Dimensions: 14'9" x 8'11"  
Area: 113 sq. ft  
Counted as living area: No

Heated: No  
Finished: No  
Enclosed: No  
Contiguous: Yes  
Permitted: Yes  
Wet space: No  
Addition: No  
Conversion: No

## 2 Floor 1 - Room

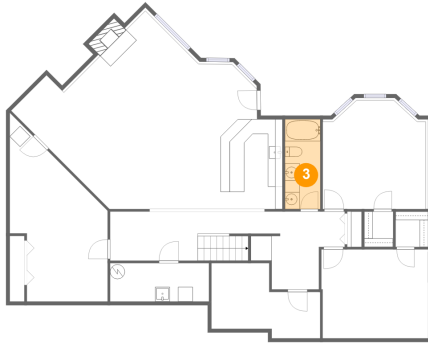


Dimensions: 13'3" x 22'7"  
Area: 231 sq. ft  
Counted as living area: Yes

Heated: Yes  
Finished: Yes  
Enclosed: Yes  
Contiguous: Yes  
Permitted: Yes  
Wet space: No  
Addition: No  
Conversion: No

**9002 East 87th Street South, Derby, Sedgwick County,  
Kansas, United States, 67037**

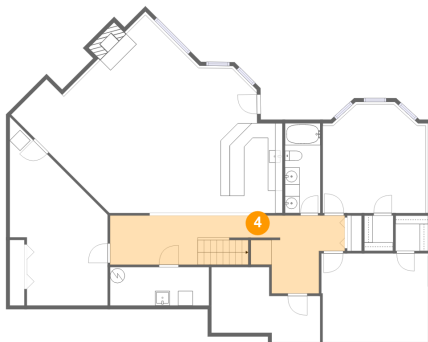
**3 Floor 1 - Bath**



Dimensions: 4'9" x 12'2"  
Area: 58 sq. ft  
Counted as living area: Yes

Heated: Yes  
Finished: Yes  
Enclosed: Yes  
Contiguous: Yes  
Permitted: Yes  
Wet space: Yes  
Addition: No  
Conversion: No

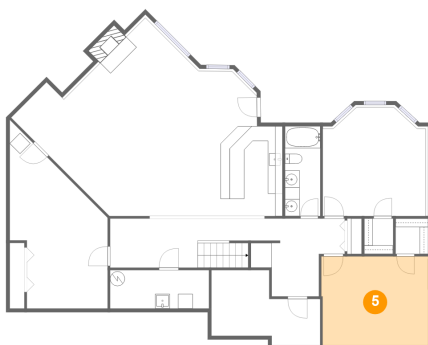
**4 Floor 1 - Hall**



Dimensions: 31'10" x 10'7"  
Area: 228 sq. ft  
Counted as living area: Yes

Heated: Yes  
Finished: Yes  
Enclosed: Yes  
Contiguous: Yes  
Permitted: Yes  
Wet space: No  
Addition: No  
Conversion: No

**5 Floor 1 - Bedroom**

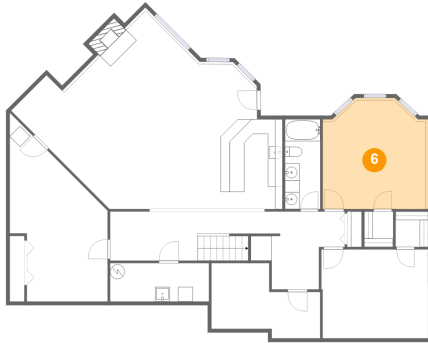


Dimensions: 14'6" x 12'0"  
Area: 174 sq. ft  
Counted as living area: Yes

Heated: Yes  
Finished: Yes  
Enclosed: Yes  
Contiguous: Yes  
Permitted: Yes  
Wet space: No  
Addition: No  
Conversion: No

# 9002 East 87th Street South, Derby, Sedgwick County, Kansas, United States, 67037

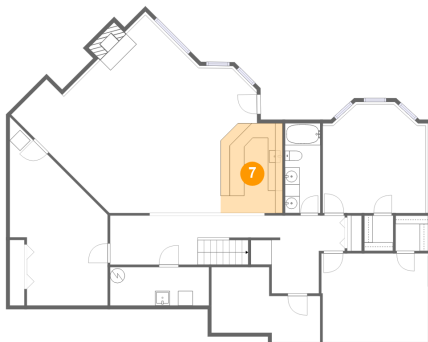
## 6 Floor 1 - Bedroom



Dimensions: 14'0" x 14'9"  
Area: 199 sq. ft  
Counted as living area: Yes

Heated: Yes  
Finished: Yes  
Enclosed: Yes  
Contiguous: Yes  
Permitted: Yes  
Wet space: No  
Addition: No  
Conversion: No

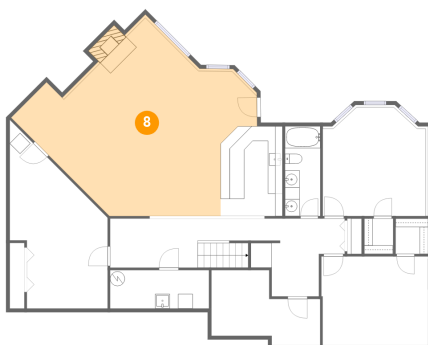
## 7 Floor 1 - Wet Bar



Dimensions: 8'5" x 12'2"  
Area: 100 sq. ft  
Counted as living area: Yes

Heated: Yes  
Finished: Yes  
Enclosed: Yes  
Contiguous: Yes  
Permitted: Yes  
Wet space: No  
Addition: No  
Conversion: No

## 8 Floor 1 - Recreation Room

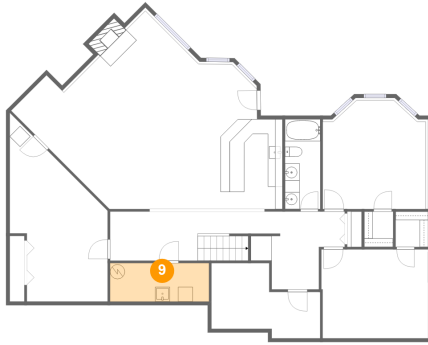


Dimensions: 33'4" x 25'5"  
Area: 546 sq. ft  
Counted as living area: Yes

Heated: Yes  
Finished: Yes  
Enclosed: Yes  
Contiguous: Yes  
Permitted: Yes  
Wet space: No  
Addition: No  
Conversion: No

9002 East 87th Street South, Derby, Sedgwick County,  
Kansas, United States, 67037

### 9 Floor 1 - Electrical Room



Dimensions: 13'5" x 5'3"  
Area: 70 sq. ft  
Counted as living area: No

Heated: No  
Finished: No  
Enclosed: Yes  
Contiguous: Yes  
Permitted: Yes  
Wet space: No  
Addition: No  
Conversion: No

### 10 Floor 2 - Pantry



Dimensions: 5'8" x 5'2"  
Area: 26 sq. ft  
Counted as living area: Yes

Heated: Yes  
Finished: Yes  
Enclosed: Yes  
Contiguous: Yes  
Permitted: Yes  
Wet space: No  
Addition: No  
Conversion: No

### 11 Floor 2 - Family Room



Dimensions: 14'6" x 14'8"  
Area: 181 sq. ft  
Counted as living area: Yes

Heated: Yes  
Finished: Yes  
Enclosed: Yes  
Contiguous: Yes  
Permitted: Yes  
Wet space: No  
Addition: No  
Conversion: No



# 9002 East 87th Street South, Derby, Sedgwick County, Kansas, United States, 67037

## 12 Floor 2 - Bedroom



Dimensions: 13'6" x 11'5"  
Area: 134 sq. ft  
Counted as living area: Yes

Heated: Yes  
Finished: Yes  
Enclosed: Yes  
Contiguous: Yes  
Permitted: Yes  
Wet space: No  
Addition: No  
Conversion: No

## 13 Floor 2 - Primary Bedroom



Dimensions: 14'10" x 23'0"  
Area: 257 sq. ft  
Counted as living area: Yes

Heated: Yes  
Finished: Yes  
Enclosed: Yes  
Contiguous: Yes  
Permitted: Yes  
Wet space: No  
Addition: No  
Conversion: No

## 14 Floor 2 - WC

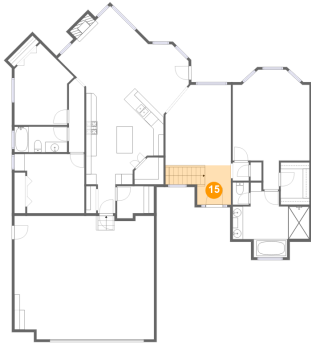


Dimensions: 3'1" x 4'3"  
Area: 13 sq. ft  
Counted as living area: Yes

Heated: Yes  
Finished: Yes  
Enclosed: Yes  
Contiguous: Yes  
Permitted: Yes  
Wet space: No  
Addition: No  
Conversion: No

9002 East 87th Street South, Derby, Sedgwick County,  
Kansas, United States, 67037

**15** Floor 2 - Foyer



Dimensions: 6'6" x 7'7"  
Area: 72 sq. ft  
Counted as living area: Yes

Heated: Yes  
Finished: Yes  
Enclosed: Yes  
Contiguous: Yes  
Permitted: Yes  
Wet space: No  
Addition: No  
Conversion: No

**16** Floor 2 - Hall



Dimensions: 3'1" x 3'6"  
Area: 11 sq. ft  
Counted as living area: Yes

Heated: Yes  
Finished: Yes  
Enclosed: Yes  
Contiguous: Yes  
Permitted: Yes  
Wet space: No  
Addition: No  
Conversion: No

**17** Floor 2 - W.I.C.

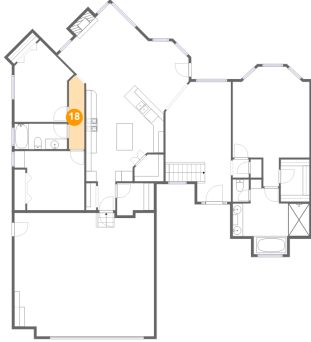


Dimensions: 5'7" x 8'2"  
Area: 45 sq. ft  
Counted as living area: Yes

Heated: Yes  
Finished: Yes  
Enclosed: Yes  
Contiguous: Yes  
Permitted: Yes  
Wet space: No  
Addition: No  
Conversion: No

# 9002 East 87th Street South, Derby, Sedgwick County, Kansas, United States, 67037

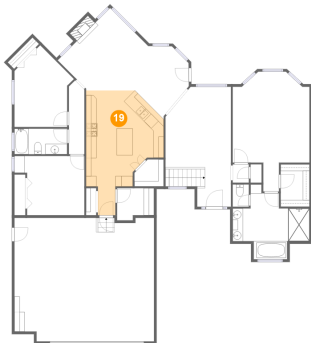
## 18 Floor 2 - Hall



Dimensions: 3'0" x 14'2"  
Area: 40 sq. ft  
Counted as living area: Yes

Heated: Yes  
Finished: Yes  
Enclosed: Yes  
Contiguous: Yes  
Permitted: Yes  
Wet space: No  
Addition: No  
Conversion: No

## 19 Floor 2 - Kitchen



Dimensions: 15'0" x 24'0"  
Area: 250 sq. ft  
Counted as living area: Yes

Heated: Yes  
Finished: Yes  
Enclosed: Yes  
Contiguous: Yes  
Permitted: Yes  
Wet space: No  
Addition: No  
Conversion: No

## 20 Floor 2 - Living Room



Dimensions: 12'7" x 15'6"  
Area: 182 sq. ft  
Counted as living area: Yes

Heated: Yes  
Finished: Yes  
Enclosed: Yes  
Contiguous: Yes  
Permitted: Yes  
Wet space: No  
Addition: No  
Conversion: No

# 9002 East 87th Street South, Derby, Sedgwick County, Kansas, United States, 67037

## 21 Floor 2 - Bedroom



Dimensions: 11'5" x 15'8"  
Area: 136 sq. ft  
Counted as living area: Yes

Heated: Yes  
Finished: Yes  
Enclosed: Yes  
Contiguous: Yes  
Permitted: Yes  
Wet space: No  
Addition: No  
Conversion: No

## 22 Floor 2 - Primary Bath



Dimensions: 14'10" x 14'5"  
Area: 136 sq. ft  
Counted as living area: Yes

Heated: Yes  
Finished: Yes  
Enclosed: Yes  
Contiguous: Yes  
Permitted: Yes  
Wet space: Yes  
Addition: No  
Conversion: No

## 23 Floor 2 - Dining Area



Dimensions: 10'1" x 13'10"  
Area: 98 sq. ft  
Counted as living area: Yes

Heated: Yes  
Finished: Yes  
Enclosed: Yes  
Contiguous: Yes  
Permitted: Yes  
Wet space: No  
Addition: No  
Conversion: No

# 9002 East 87th Street South, Derby, Sedgwick County, Kansas, United States, 67037

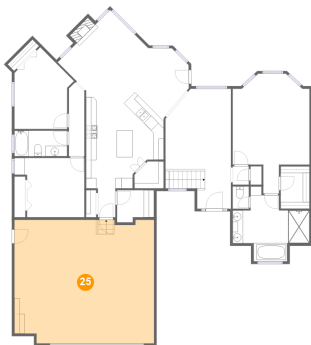
## 24 Floor 2 - Laundry



Dimensions: 7'1" x 6'2"  
Area: 40 sq. ft  
Counted as living area: Yes

Heated: Yes  
Finished: Yes  
Enclosed: Yes  
Contiguous: Yes  
Permitted: Yes  
Wet space: No  
Addition: No  
Conversion: No

## 25 Floor 2 - Garage



Dimensions: 26'11" x 23'9"  
Area: 628 sq. ft  
Counted as living area: No

Heated: No  
Finished: No  
Enclosed: Yes  
Contiguous: Yes  
Permitted: Yes  
Wet space: No  
Addition: No  
Conversion: No

## 26 Floor 2 - Bath



Dimensions: 10'2" x 4'11"  
Area: 50 sq. ft  
Counted as living area: Yes

Heated: Yes  
Finished: Yes  
Enclosed: Yes  
Contiguous: Yes  
Permitted: Yes  
Wet space: Yes  
Addition: No  
Conversion: No