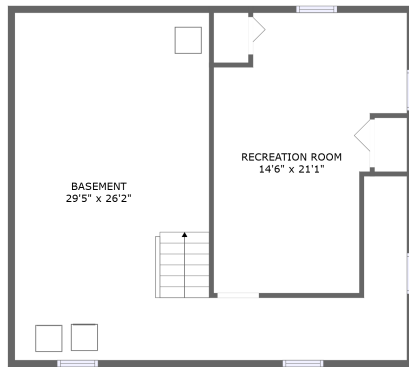
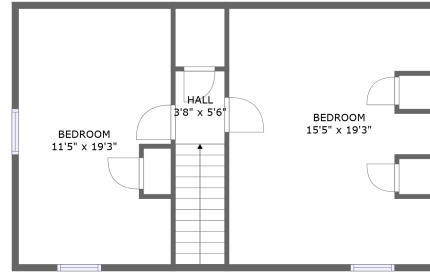
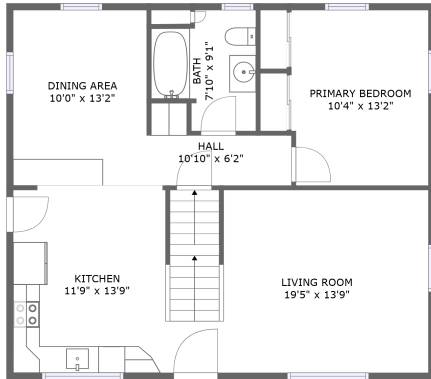


# 2 Breton Road, West Upton, Upton, Worcester County, Massachusetts, United States, 01568




## Property Summary

 **0** garages

 **3** bedrooms

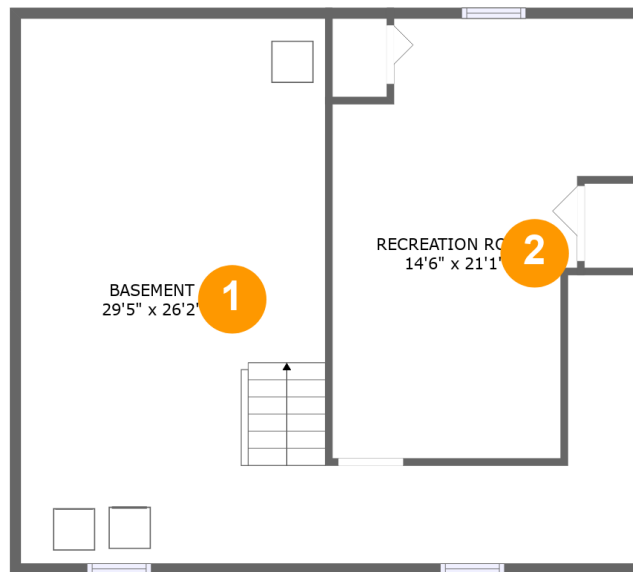
 **1** bathrooms

 **0** half baths

 **3** floors

 **1,581** Gross Living Area sqft

 **2,389** total sqft

**2 Breton Road, West Upton, Upton, Worcester  
County, Massachusetts, United States, 01568****Room Dimensions**

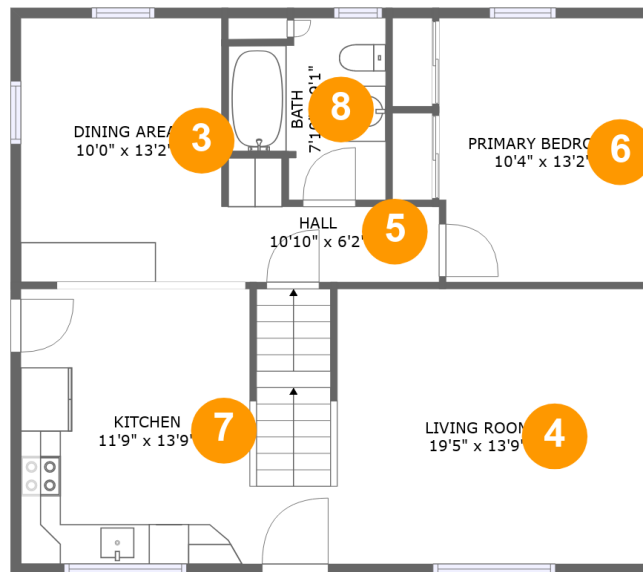
Floor 1

Total sqft: 827

Living area: 303

#	Room name	Dimensions	Area (sqft)	Counted as Living Area
1	Basement	29'5" x 26'2"	481 sq. ft	No
2	Recreation Room	14'6" x 21'1"	249 sq. ft	Yes

## 2 Breton Road, West Upton, Upton, Worcester County, Massachusetts, United States, 01568



### Room Dimensions

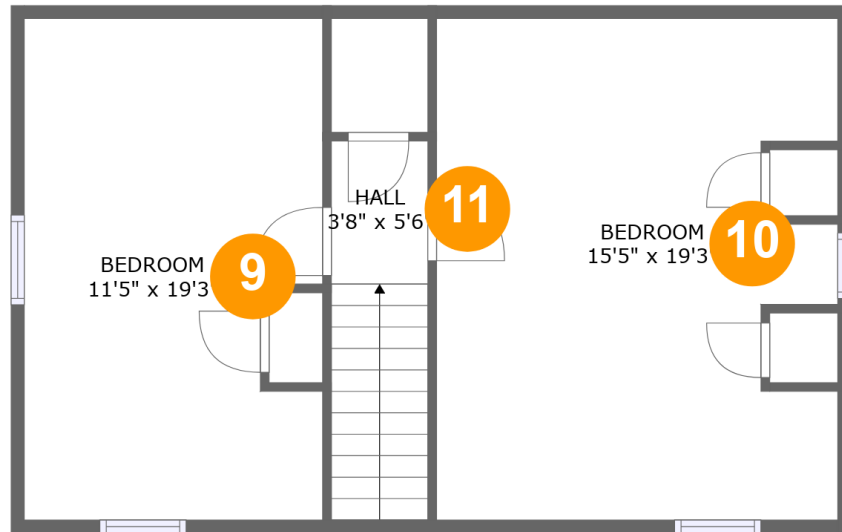
Floor 2

Total sqft: 910

Living area: 910

#	Room name	Dimensions	Area (sqft)	Counted as Living Area
3	Dining Area	10'0" x 13'2"	132 sq. ft	Yes
4	Living Room	19'5" x 13'9"	265 sq. ft	Yes
5	Hall	10'10" x 6'2"	48 sq. ft	Yes
6	Primary Bedroom	10'4" x 13'2"	134 sq. ft	Yes
7	Kitchen	11'9" x 13'9"	160 sq. ft	Yes
8	Bath	7'10" x 9'1"	59 sq. ft	Yes

## 2 Breton Road, West Upton, Upton, Worcester County, Massachusetts, United States, 01568



### Room Dimensions

Floor 3

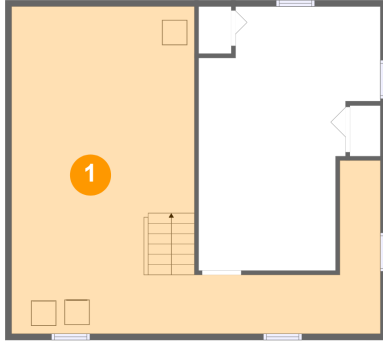
Total sqft: 652

Living area: 368

#	Room name	Dimensions	Area (sqft)	Counted as Living Area
9	Bedroom	11'5" x 19'3"	116 sq. ft	Yes
10	Bedroom	15'5" x 19'3"	143 sq. ft	Yes
11	Hall	3'8" x 5'6"	54 sq. ft	Yes

# 2 Breton Road, West Upton, Upton, Worcester County, Massachusetts, United States, 01568

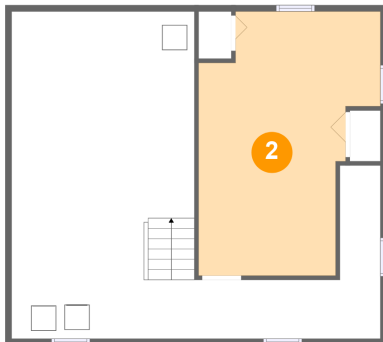
## 1 Floor 1 - Basement



Dimensions: 29'5" x 26'2"  
Area: 481 sq. ft  
Counted as Living Area: No

Heated: Yes  
Finished: No  
Enclosed: Yes  
Contiguous: Yes  
Permitted: Yes  
Wet Space: No  
Addition: No  
Conversion: No

## 2 Floor 1 - Recreation Room



Dimensions: 14'6" x 21'1"  
Area: 249 sq. ft  
Counted as Living Area:  
Yes

Heated: Yes  
Finished: Yes  
Enclosed: Yes  
Contiguous:  
Yes  
Permitted: Yes  
Wet Space: No  
Addition: No  
Conversion: No

## 2 Breton Road, West Upton, Upton, Worcester County, Massachusetts, United States, 01568

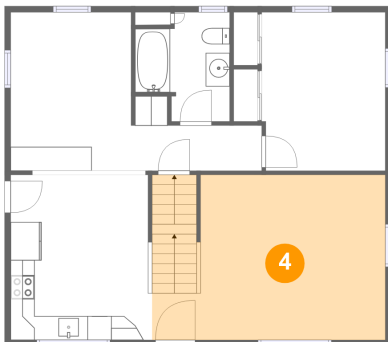
### 3 Floor 2 - Dining Area



Dimensions: 10'0" x 13'2"  
Area: 132 sq. ft  
Counted as Living Area:  
Yes

Heated: Yes  
Finished: Yes  
Enclosed: Yes  
Contiguous:  
Yes  
Permitted: Yes  
Wet Space: No  
Addition: No  
Conversion: No

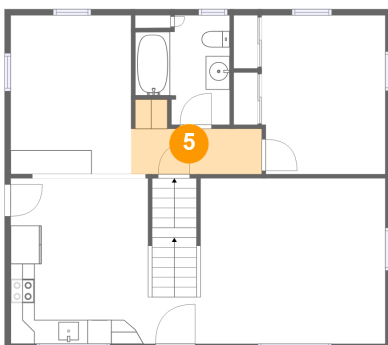
### 4 Floor 2 - Living Room



Dimensions: 19'5" x 13'9"  
Area: 265 sq. ft  
Counted as Living Area:  
Yes

Heated: Yes  
Finished: Yes  
Enclosed: Yes  
Contiguous:  
Yes  
Permitted: Yes  
Wet Space: No  
Addition: No  
Conversion: No

### 5 Floor 2 - Hall



Dimensions: 10'10" x 6'2"  
Area: 48 sq. ft  
Counted as Living Area:  
Yes

Heated: Yes  
Finished: Yes  
Enclosed: Yes  
Contiguous:  
Yes  
Permitted: Yes  
Wet Space: No  
Addition: No  
Conversion: No

## 2 Breton Road, West Upton, Upton, Worcester County, Massachusetts, United States, 01568

### 6 Floor 2 - Primary Bedroom



Dimensions: 10'4" x 13'2"  
Area: 134 sq. ft  
Counted as Living Area:  
Yes

Heated: Yes  
Finished: Yes  
Enclosed: Yes  
Contiguous:  
Yes  
Permitted: Yes  
Wet Space: No  
Addition: No  
Conversion: No

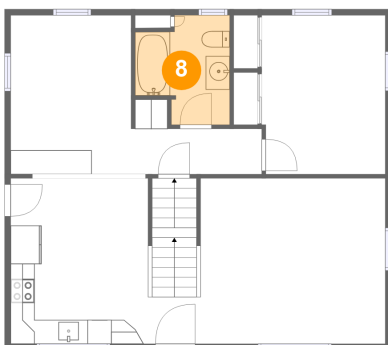
### 7 Floor 2 - Kitchen



Dimensions: 11'9" x 13'9"  
Area: 160 sq. ft  
Counted as Living Area:  
Yes

Heated: Yes  
Finished: Yes  
Enclosed: Yes  
Contiguous:  
Yes  
Permitted: Yes  
Wet Space: No  
Addition: No  
Conversion: No

### 8 Floor 2 - Bath

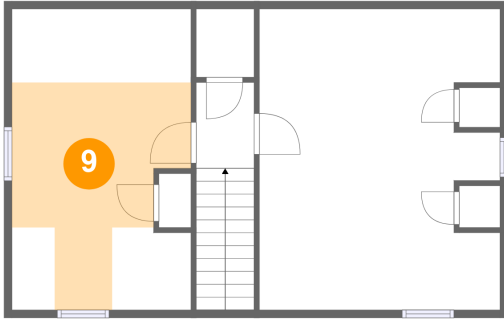


Dimensions: 7'10" x 9'1"  
Area: 59 sq. ft  
Counted as Living Area:  
Yes

Heated: Yes  
Finished: Yes  
Enclosed: Yes  
Contiguous:  
Yes  
Permitted: Yes  
Wet Space: Yes  
Addition: No  
Conversion: No

## 2 Breton Road, West Upton, Upton, Worcester County, Massachusetts, United States, 01568

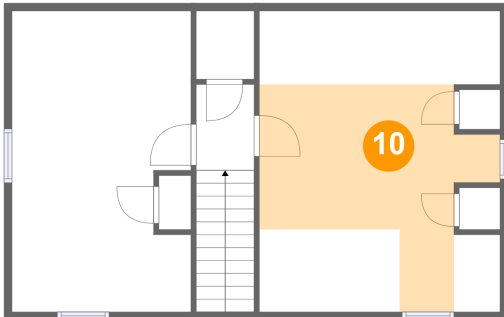
### 9 Floor 3 - Bedroom



Dimensions: 11'5" x 19'3"  
Area: 116 sq. ft  
Counted as Living Area:  
Yes

Heated: Yes  
Finished: Yes  
Enclosed: Yes  
Contiguous:  
Yes  
Permitted: Yes  
Wet Space: No  
Addition: No  
Conversion: No

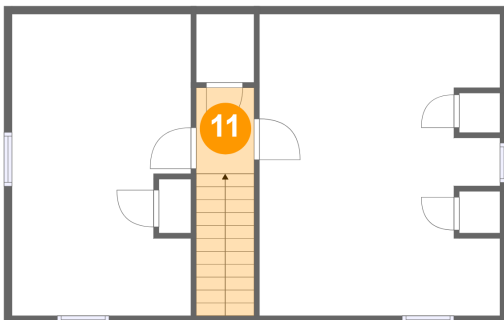
### 10 Floor 3 - Bedroom



Dimensions: 15'5" x 19'3"  
Area: 143 sq. ft  
Counted as Living Area:  
Yes

Heated: Yes  
Finished: Yes  
Enclosed: Yes  
Contiguous:  
Yes  
Permitted: Yes  
Wet Space: No  
Addition: No  
Conversion: No

### 11 Floor 3 - Hall



Dimensions: 3'8" x 5'6"  
Area: 54 sq. ft  
Counted as Living Area:  
Yes

Heated: Yes  
Finished: Yes  
Enclosed: Yes  
Contiguous:  
Yes  
Permitted: Yes  
Wet Space: No  
Addition: No  
Conversion: No