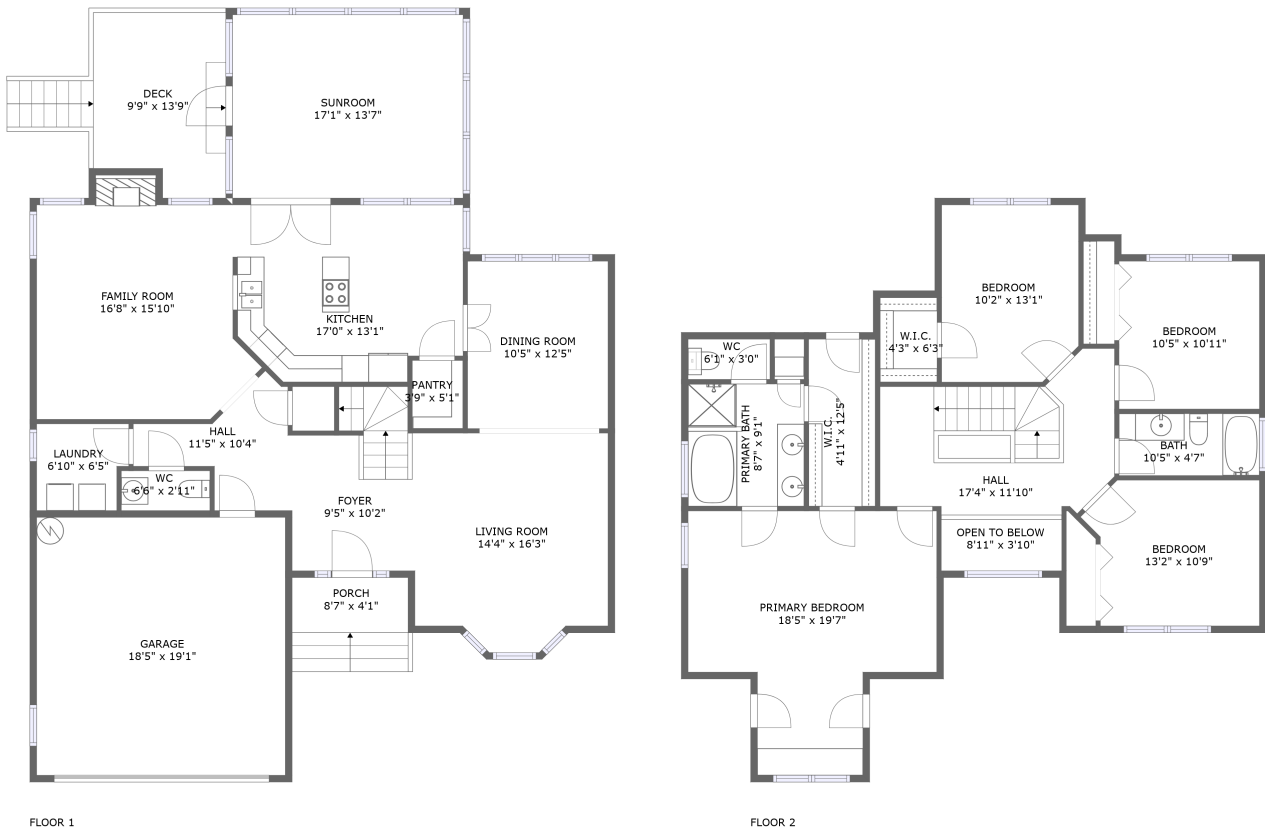



# 212 Red Field Street, Cary, Wake County, North Carolina, United States, 27513



## Property summary


 **1** Garages

 **4** Bedrooms

 **2** Bathrooms

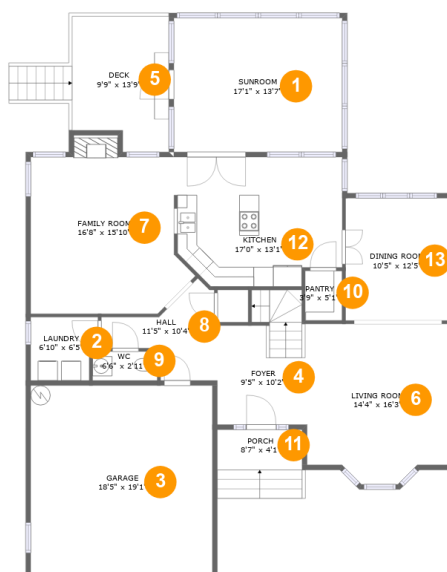
 **1** Half baths

 **2** Floors

 **2,392** Gross living area sqft

 **3,277** Total sqft

# 212 Red Field Street, Cary, Wake County, North Carolina, United States, 27513



## Room dimensions

Floor 1

Total sqft: 2010 Living area: 1163

#		Dimensions	sqft	Counted as living area
1	Room	17'1" x 13'7"	232 sq. ft	No
2	Utility	6'10" x 6'5"	41 sq. ft	Yes
3	Garage	18'5" x 19'1"	351 sq. ft	No
4	Entry	9'5" x 10'2"	111 sq. ft	Yes
5	Outdoor	9'9" x 13'9"	145 sq. ft	No
6	Living Room	14'4" x 16'3"	215 sq. ft	Yes
7	Living Room	16'8" x 15'10"	244 sq. ft	Yes
8	Hall	11'5" x 10'4"	67 sq. ft	Yes
9	Bath	6'6" x 2'11"	19 sq. ft	Yes
10	Pantry	3'9" x 5'1"	19 sq. ft	Yes
11	Outdoor	8'7" x 4'1"	60 sq. ft	No

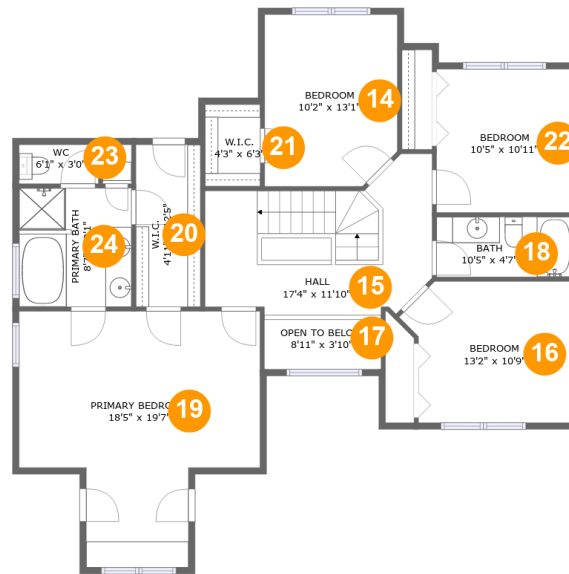
Scan captured on Sun, 29 Dec 2024 13:50:35 GMT

Information is calculated by Cubicasa technology deemed highly reliable but not guaranteed.

# 212 Red Field Street, Cary, Wake County, North Carolina, United States, 27513

#		Dimensions	sqft	Counted as living area
12	Kitchen	17'0" x 13'1"	208 sq. ft	Yes
13	Dining Room	10'5" x 12'5"	129 sq. ft	Yes

# 212 Red Field Street, Cary, Wake County, North Carolina, United States, 27513



## Room dimensions

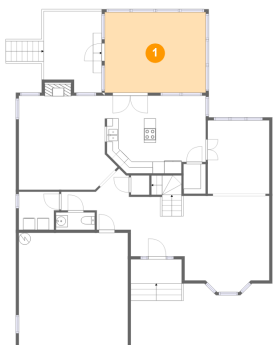
Floor 2

Total sqft: 1267 Living area: 1229

#		Dimensions	sqft	Counted as living area
14	Bedroom	10'2" x 13'1"	129 sq. ft	Yes
15	Hall	17'4" x 11'10"	171 sq. ft	Yes
16	Bedroom	13'2" x 10'9"	129 sq. ft	Yes
17	Open To Below	8'11" x 3'10"	34 sq. ft	No
18	Bath	10'5" x 4'7"	48 sq. ft	Yes
19	Bedroom	18'5" x 19'7"	279 sq. ft	Yes
20	Cl	4'11" x 12'5"	61 sq. ft	Yes
21	Cl	4'3" x 6'3"	26 sq. ft	Yes
22	Bedroom	10'5" x 10'11"	114 sq. ft	Yes
23	Bath	6'1" x 3'0"	18 sq. ft	Yes
24	Bath	8'7" x 9'1"	78 sq. ft	Yes

# 212 Red Field Street, Cary, Wake County, North Carolina, United States, 27513

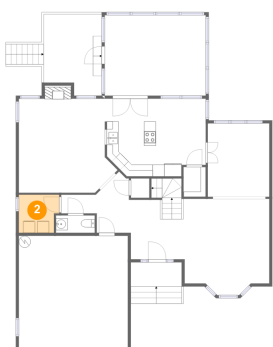
## 1 Floor 1 - Room



Dimensions: 17'1" x 13'7"  
Area: 232 sq. ft  
Counted as living area: No

Heated: No  
Finished: No  
Enclosed: Yes  
Contiguous: Yes  
Permitted: Yes  
Wet space: No  
Addition: No  
Conversion: No

## 2 Floor 1 - Utility

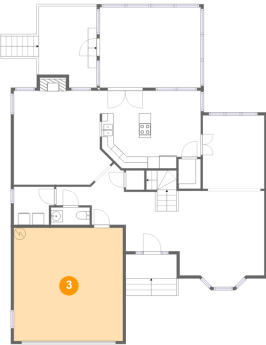


Dimensions: 6'10" x 6'5"  
Area: 41 sq. ft  
Counted as living area: Yes

Heated: Yes  
Finished: Yes  
Enclosed: Yes  
Contiguous: Yes  
Permitted: Yes  
Wet space: No  
Addition: No  
Conversion: No

# 212 Red Field Street, Cary, Wake County, North Carolina, United States, 27513

## 3 Floor 1 - Garage



Dimensions: 18'5" x 19'1"  
Area: 351 sq. ft  
Counted as living area: No

Heated: No  
Finished: No  
Enclosed: Yes  
Contiguous: Yes  
Permitted: Yes  
Wet space: No  
Addition: No  
Conversion: No

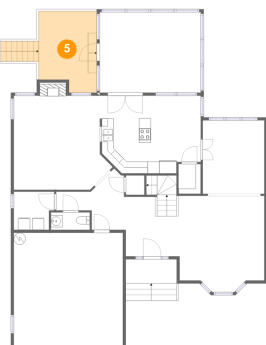
## 4 Floor 1 - Entry



Dimensions: 9'5" x 10'2"  
Area: 111 sq. ft  
Counted as living area: Yes

Heated: Yes  
Finished: Yes  
Enclosed: Yes  
Contiguous: Yes  
Permitted: Yes  
Wet space: No  
Addition: No  
Conversion: No

## 5 Floor 1 - Outdoor

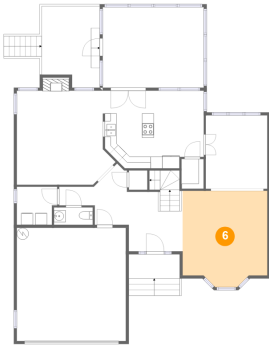


Dimensions: 9'9" x 13'9"  
Area: 145 sq. ft  
Counted as living area: No

Heated: No  
Finished: Yes  
Enclosed: No  
Contiguous: Yes  
Permitted: Yes  
Wet space: No  
Addition: No  
Conversion: No

# 212 Red Field Street, Cary, Wake County, North Carolina, United States, 27513

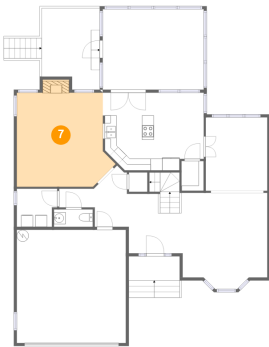
## 6 Floor 1 - Living Room



Dimensions: 14'4" x 16'3"  
Area: 215 sq. ft  
Counted as living area: Yes

Heated: Yes  
Finished: Yes  
Enclosed: Yes  
Contiguous: Yes  
Permitted: Yes  
Wet space: No  
Addition: No  
Conversion: No

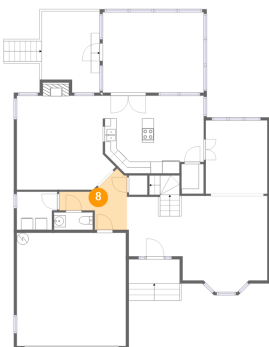
## 7 Floor 1 - Living Room



Dimensions: 16'8" x 15'10"  
Area: 244 sq. ft  
Counted as living area: Yes

Heated: Yes  
Finished: Yes  
Enclosed: Yes  
Contiguous: Yes  
Permitted: Yes  
Wet space: No  
Addition: No  
Conversion: No

## 8 Floor 1 - Hall

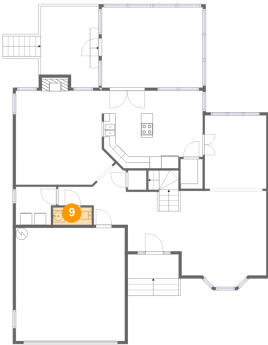


Dimensions: 11'5" x 10'4"  
Area: 67 sq. ft  
Counted as living area: Yes

Heated: Yes  
Finished: Yes  
Enclosed: Yes  
Contiguous: Yes  
Permitted: Yes  
Wet space: No  
Addition: No  
Conversion: No

# 212 Red Field Street, Cary, Wake County, North Carolina, United States, 27513

## 9 Floor 1 - Bath



Dimensions: 6'6" x 2'11"  
Area: 19 sq. ft  
Counted as living area: Yes

Heated: Yes  
Finished: Yes  
Enclosed: Yes  
Contiguous: Yes  
Permitted: Yes  
Wet space: Yes  
Addition: No  
Conversion: No

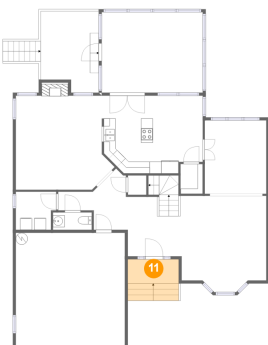
## 10 Floor 1 - Pantry



Dimensions: 3'9" x 5'1"  
Area: 19 sq. ft  
Counted as living area: Yes

Heated: Yes  
Finished: Yes  
Enclosed: Yes  
Contiguous: Yes  
Permitted: Yes  
Wet space: No  
Addition: No  
Conversion: No

## 11 Floor 1 - Outdoor



Dimensions: 8'7" x 4'1"  
Area: 60 sq. ft  
Counted as living area: No

Heated: No  
Finished: Yes  
Enclosed: No  
Contiguous: Yes  
Permitted: Yes  
Wet space: No  
Addition: No  
Conversion: No



# 212 Red Field Street, Cary, Wake County, North Carolina, United States, 27513

## 12 Floor 1 - Kitchen



Dimensions: 17'0" x 13'1"  
Area: 208 sq. ft  
Counted as living area: Yes

Heated: Yes  
Finished: Yes  
Enclosed: Yes  
Contiguous: Yes  
Permitted: Yes  
Wet space: No  
Addition: No  
Conversion: No

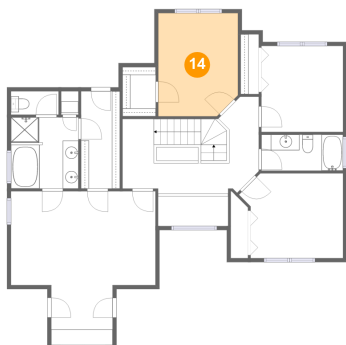
## 13 Floor 1 - Dining Room



Dimensions: 10'5" x 12'5"  
Area: 129 sq. ft  
Counted as living area: Yes

Heated: Yes  
Finished: Yes  
Enclosed: Yes  
Contiguous: Yes  
Permitted: Yes  
Wet space: No  
Addition: No  
Conversion: No

## 14 Floor 2 - Bedroom



Dimensions: 10'2" x 13'1"  
Area: 129 sq. ft  
Counted as living area: Yes

Heated: Yes  
Finished: Yes  
Enclosed: Yes  
Contiguous: Yes  
Permitted: Yes  
Wet space: No  
Addition: No  
Conversion: No

# 212 Red Field Street, Cary, Wake County, North Carolina, United States, 27513

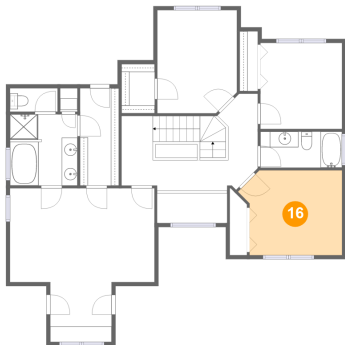
## 15 Floor 2 - Hall



Dimensions: 17'4" x 11'10"  
Area: 171 sq. ft  
Counted as living area: Yes

Heated: Yes  
Finished: Yes  
Enclosed: Yes  
Contiguous: Yes  
Permitted: Yes  
Wet space: No  
Addition: No  
Conversion: No

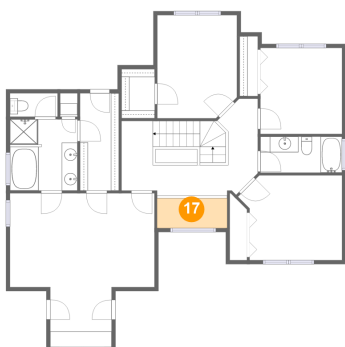
## 16 Floor 2 - Bedroom



Dimensions: 13'2" x 10'9"  
Area: 129 sq. ft  
Counted as living area: Yes

Heated: Yes  
Finished: Yes  
Enclosed: Yes  
Contiguous: Yes  
Permitted: Yes  
Wet space: No  
Addition: No  
Conversion: No

## 17 Floor 2 - Open To Below



Dimensions: 8'11" x 3'10"  
Area: 34 sq. ft  
Counted as living area: No

Heated: No  
Finished: No  
Enclosed: No  
Contiguous: Yes  
Permitted: No  
Wet space: No  
Addition: No  
Conversion: No

# 212 Red Field Street, Cary, Wake County, North Carolina, United States, 27513

## 18 Floor 2 - Bath



Dimensions: 10'5" x 4'7"  
Area: 48 sq. ft  
Counted as living area: Yes

Heated: Yes  
Finished: Yes  
Enclosed: Yes  
Contiguous: Yes  
Permitted: Yes  
Wet space: Yes  
Addition: No  
Conversion: No

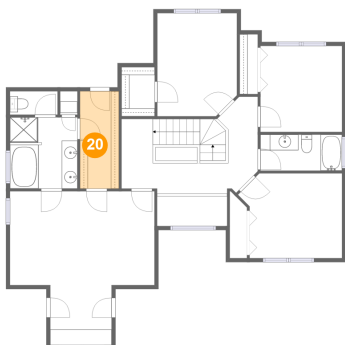
## 19 Floor 2 - Bedroom



Dimensions: 18'5" x 19'7"  
Area: 279 sq. ft  
Counted as living area: Yes

Heated: Yes  
Finished: Yes  
Enclosed: Yes  
Contiguous: Yes  
Permitted: Yes  
Wet space: No  
Addition: No  
Conversion: No

## 20 Floor 2 - Cl



Dimensions: 4'11" x 12'5"  
Area: 61 sq. ft  
Counted as living area: Yes

Heated: Yes  
Finished: Yes  
Enclosed: Yes  
Contiguous: Yes  
Permitted: Yes  
Wet space: No  
Addition: No  
Conversion: No

# 212 Red Field Street, Cary, Wake County, North Carolina, United States, 27513

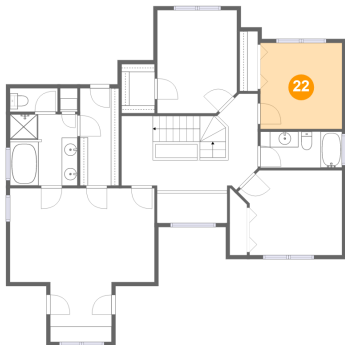
## 21 Floor 2 - Cl



Dimensions: 4'3" x 6'3"  
Area: 26 sq. ft  
Counted as living area: Yes

Heated: Yes  
Finished: Yes  
Enclosed: Yes  
Contiguous: Yes  
Permitted: Yes  
Wet space: No  
Addition: No  
Conversion: No

## 22 Floor 2 - Bedroom



Dimensions: 10'5" x 10'11"  
Area: 114 sq. ft  
Counted as living area: Yes

Heated: Yes  
Finished: Yes  
Enclosed: Yes  
Contiguous: Yes  
Permitted: Yes  
Wet space: No  
Addition: No  
Conversion: No

## 23 Floor 2 - Bath



Dimensions: 6'1" x 3'0"  
Area: 18 sq. ft  
Counted as living area: Yes

Heated: Yes  
Finished: Yes  
Enclosed: Yes  
Contiguous: Yes  
Permitted: Yes  
Wet space: Yes  
Addition: No  
Conversion: No

# 212 Red Field Street, Cary, Wake County, North Carolina, United States, 27513

## 24 Floor 2 - Bath



Dimensions: 8'7" x 9'1"  
Area: 78 sq. ft  
Counted as living area: Yes

Heated: Yes  
Finished: Yes  
Enclosed: Yes  
Contiguous: Yes  
Permitted: Yes  
Wet space: Yes  
Addition: No  
Conversion: No