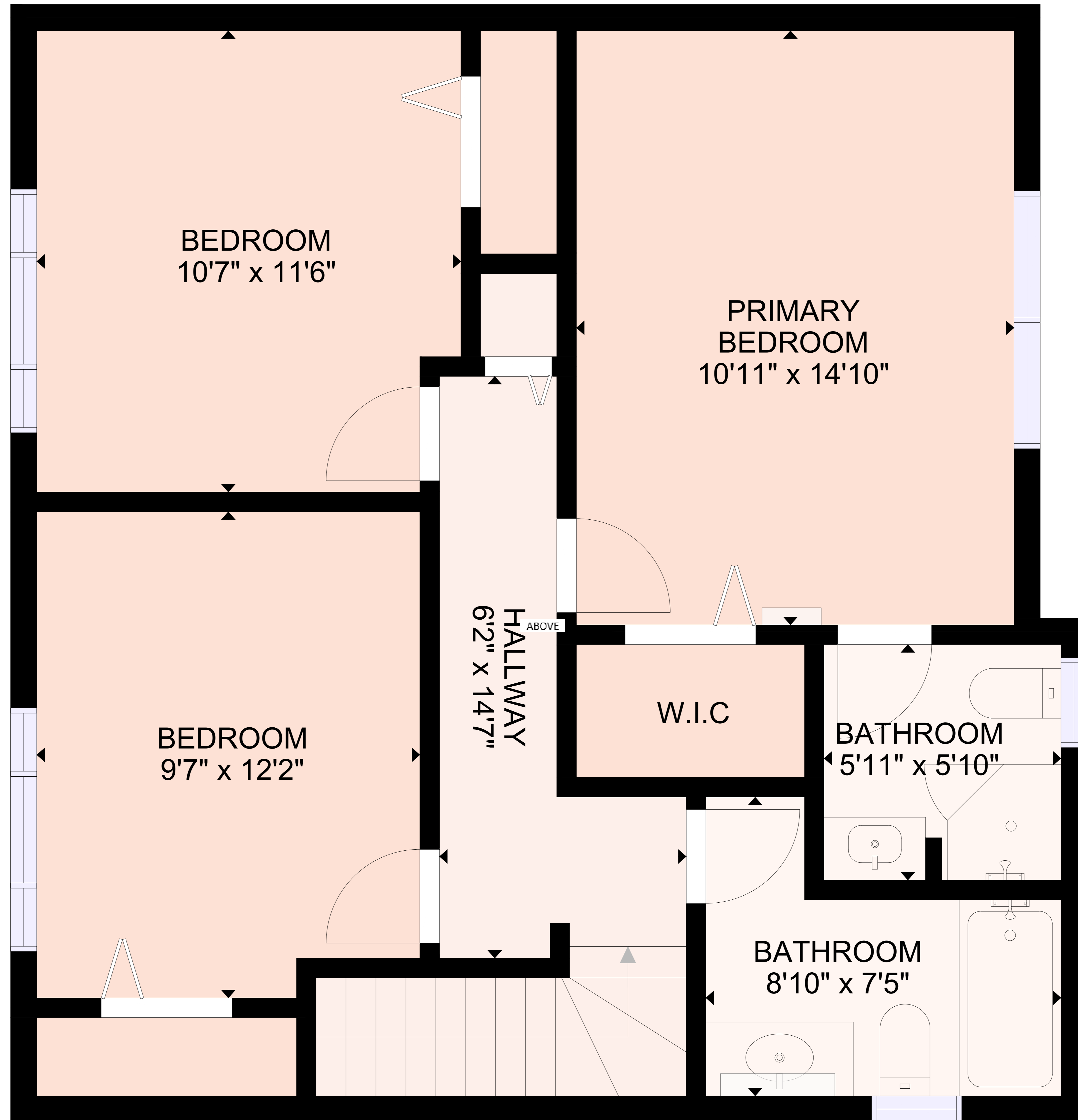


35290 Sandy Hill Cres



ABOVE

Floor Plan Gross Internal Area
35290 Sandy Hill Cres
MAIN: 1041 SQFT ABOVE: 655 SQFT BELOW: 1002 SQFT
TOTAL: 2698 SQFT

Sizes and Dimensions are Approximate, Actual May Vary

