

Home data report

1964 N Coldspring Rd,Arlington Heights,IL,US





**Total Area: 1054 sq. ft**  
Below Ground: 65 sq. ft, Floor 2: 989 sq. ft  
Excluded: Garage 252 sq. ft, Balcony 56 sq. ft, Open to below 24 sq. ft, Fireplace 19 sq. ft, Walls: 105 sq. ft

Property summary

 **2** Floors

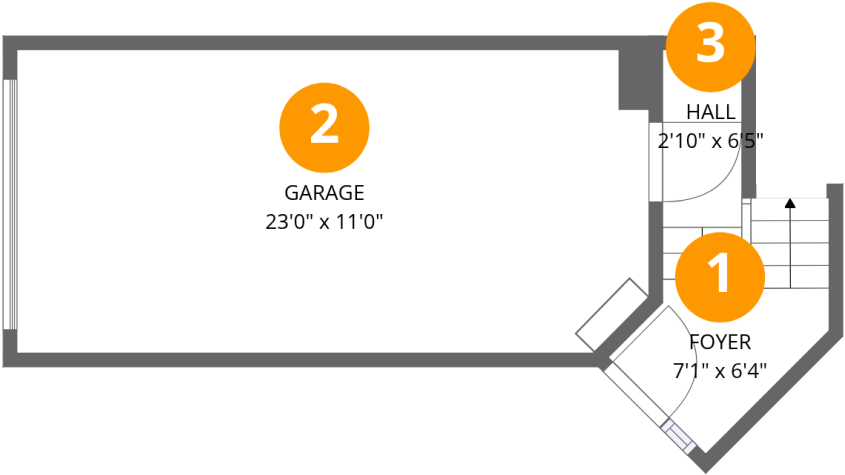
 **2** Bedrooms

 **1** Bathrooms

 **1** Garages

Home data report

1964 N Coldspring Rd,Arlington Heights,IL,US



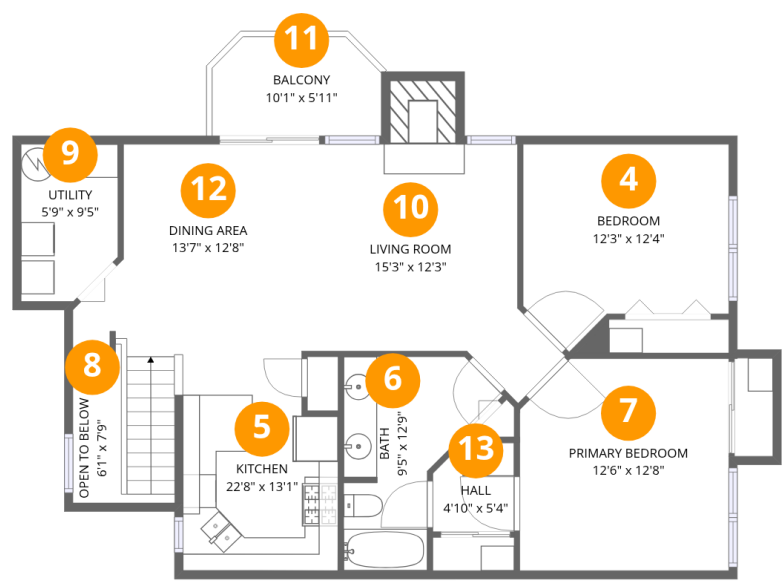
Room dimensions

Floor 1 Below grade Total:65sqft    Excluded: 252sqft

#		Dimensions	sqft	Counted as living area
1	Foyer	7'1" x 6'4"	46 sq. ft	Yes
2	Garage	23'0" x 11'0"	252 sq. ft	No
3	Hall	2'10" x 6'5"	19 sq. ft	Yes

Home data report

1964 N Coldspring Rd,Arlington Heights,IL,US

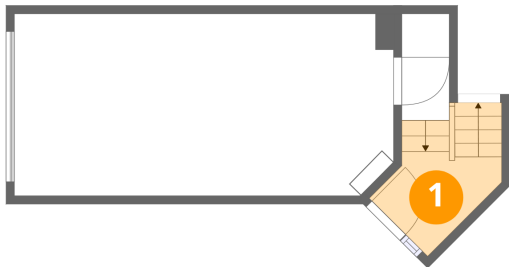


Room dimensions

Floor 2 Total:989sqft    Excluded: 99sqft

#		Dimensions	sqft	Counted as living area
4	Bedroom	12'3" x 12'4"	129 sq. ft	Yes
5	Kitchen	22'8" x 13'1"	123 sq. ft	Yes
6	Bath	9'5" x 12'9"	81 sq. ft	Yes
7	Primary Bedroom	12'6" x 12'8"	153 sq. ft	Yes
8	Open To Below	6'1" x 7'9"	24 sq. ft	No
9	Utility	5'9" x 9'5"	51 sq. ft	Yes
10	Living Room	15'3" x 12'3"	177 sq. ft	Yes
11	Balcony	10'1" x 5'11"	56 sq. ft	No
12	Dining Area	13'7" x 12'8"	172 sq. ft	Yes
13	Hall	4'10" x 5'4"	24 sq. ft	Yes

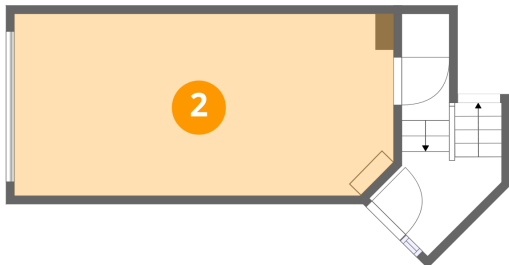
1 Floor 1 - Foyer



Dimensions: 7'1" x 6'4"  
Area: 46 sq. ft  
Counted as living area: Yes

Heated: Yes  
Finished: Yes  
Enclosed: Yes  
Contiguous: Yes  
Permitted: Yes  
Wet space: No  
Addition: No  
Conversion: No

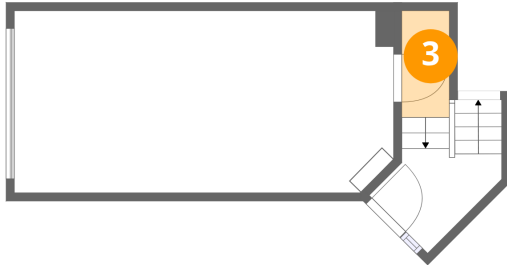
2 Floor 1 - Garage



Dimensions: 23'0" x 11'0"  
Area: 252 sq. ft  
Counted as living area: No

Heated: No  
Finished: No  
Enclosed: Yes  
Contiguous: Yes  
Permitted: Yes  
Wet space: No  
Addition: No  
Conversion: No

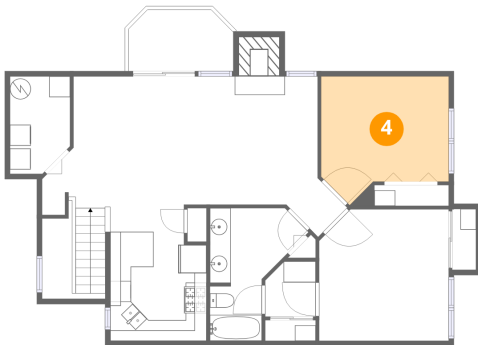
### 3 Floor 1 - Hall



Dimensions: 2'10" x 6'5"  
Area: 19 sq. ft  
Counted as living area: Yes

Heated: Yes  
Finished: Yes  
Enclosed: Yes  
Contiguous: Yes  
Permitted: Yes  
Wet space: No  
Addition: No  
Conversion: No

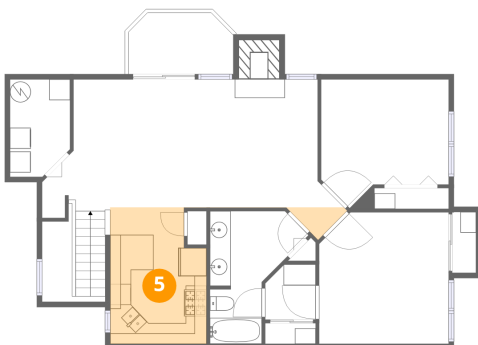
### 4 Floor 2 - Bedroom



Dimensions: 12'3" x 12'4"  
Area: 129 sq. ft  
Counted as living area: Yes

Heated: Yes  
Finished: Yes  
Enclosed: Yes  
Contiguous: Yes  
Permitted: Yes  
Wet space: No  
Addition: No  
Conversion: No

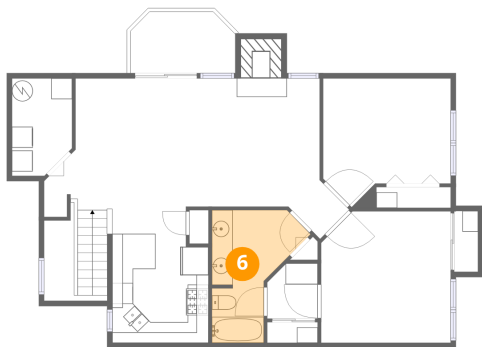
### 5 Floor 2 - Kitchen



Dimensions: 22'8" x 13'1"  
Area: 123 sq. ft  
Counted as living area: Yes

Heated: Yes  
Finished: Yes  
Enclosed: Yes  
Contiguous: Yes  
Permitted: Yes  
Wet space: No  
Addition: No  
Conversion: No

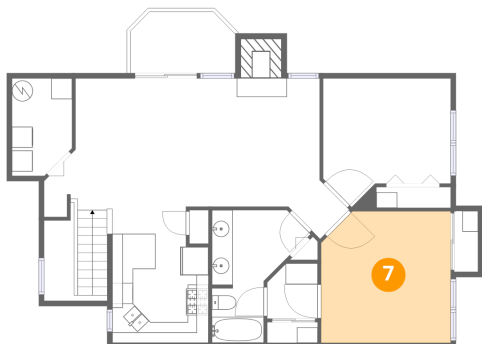
## 6 Floor 2 - Bath



Dimensions: 9'5" x 12'9"  
Area: 81 sq. ft  
Counted as living area: Yes

Heated: Yes  
Finished: Yes  
Enclosed: Yes  
Contiguous: Yes  
Permitted: Yes  
Wet space: Yes  
Addition: No  
Conversion: No

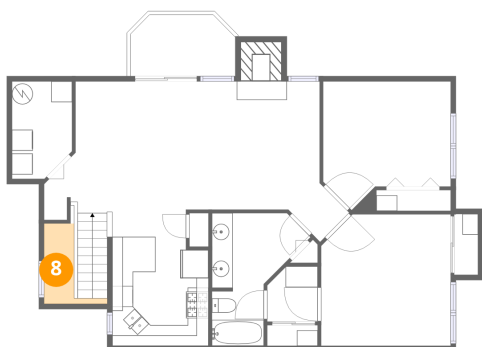
## 7 Floor 2 - Primary Bedroom



Dimensions: 12'6" x 12'8"  
Area: 153 sq. ft  
Counted as living area: Yes

Heated: Yes  
Finished: Yes  
Enclosed: Yes  
Contiguous: Yes  
Permitted: Yes  
Wet space: No  
Addition: No  
Conversion: No

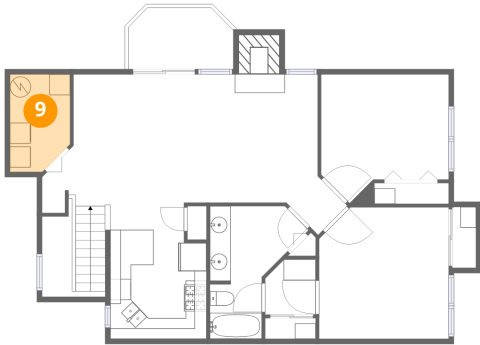
## 8 Floor 2 - Open To Below



Dimensions: 6'1" x 7'9"  
Area: 24 sq. ft  
Counted as living area: No

Heated: No  
Finished: No  
Enclosed: No  
Contiguous: Yes  
Permitted: No  
Wet space: No  
Addition: No  
Conversion: No

## 9 Floor 2 - Utility



Dimensions: 5'9" x 9'5"  
Area: 51 sq. ft  
Counted as living area: Yes

Heated: Yes  
Finished: Yes  
Enclosed: Yes  
Contiguous: Yes  
Permitted: Yes  
Wet space: No  
Addition: No  
Conversion: No

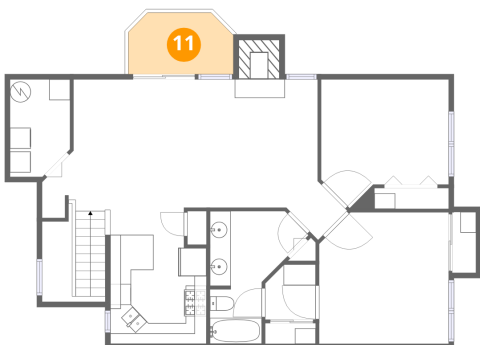
## 10 Floor 2 - Living Room



Dimensions: 15'3" x 12'3"  
Area: 177 sq. ft  
Counted as living area: Yes

Heated: Yes  
Finished: Yes  
Enclosed: Yes  
Contiguous: Yes  
Permitted: Yes  
Wet space: No  
Addition: No  
Conversion: No

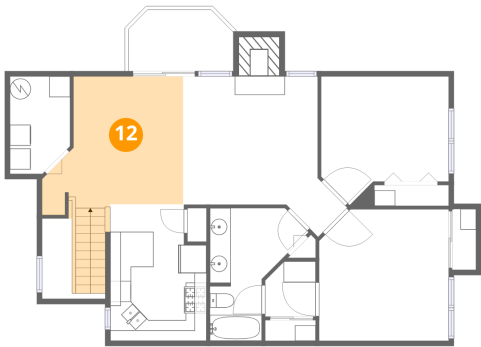
## 11 Floor 2 - Balcony



Dimensions: 10'1" x 5'11"  
Area: 56 sq. ft  
Counted as living area: No

Heated: No  
Finished: No  
Enclosed: No  
Contiguous: Yes  
Permitted: Yes  
Wet space: No  
Addition: No  
Conversion: No

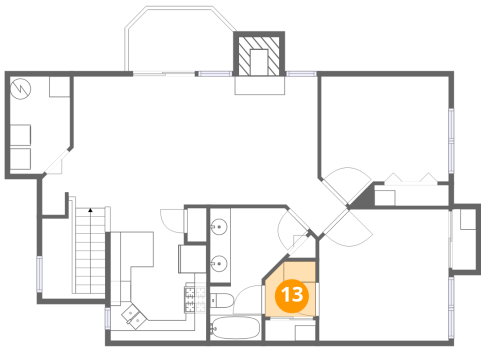
12 Floor 2 - Dining Area



Dimensions: 13'7" x 12'8"  
Area: 172 sq. ft  
Counted as living area: Yes

Heated: Yes  
Finished: Yes  
Enclosed: Yes  
Contiguous: Yes  
Permitted: Yes  
Wet space: No  
Addition: No  
Conversion: No

13 Floor 2 - Hall



Dimensions: 4'10" x 5'4"  
Area: 24 sq. ft  
Counted as living area: Yes

Heated: Yes  
Finished: Yes  
Enclosed: Yes  
Contiguous: Yes  
Permitted: Yes  
Wet space: No  
Addition: No  
Conversion: No