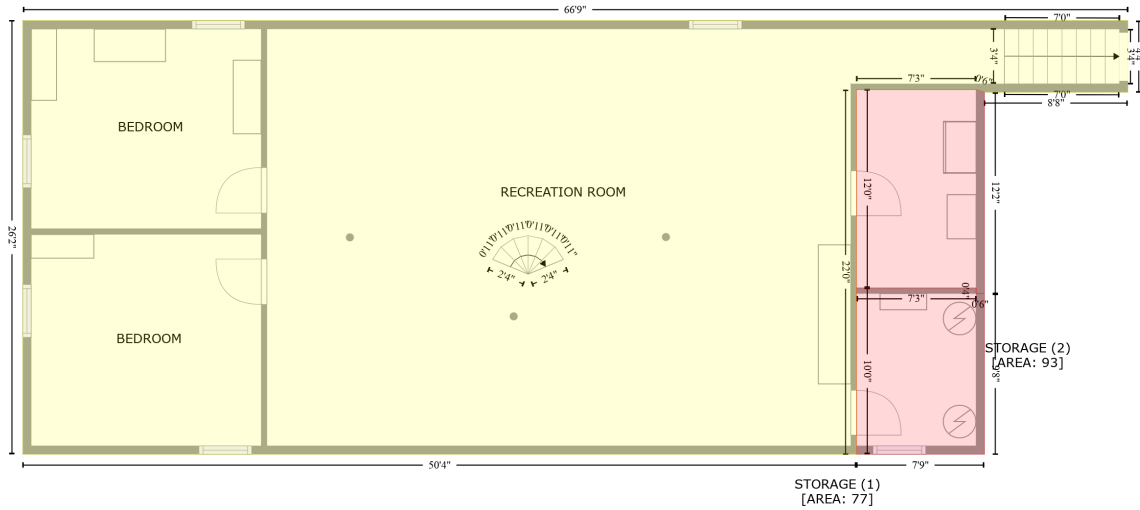


# 1360 County Road 2800 N,Rantoul,Illinois,United States

Gross Living Area: 1601 sq. ft

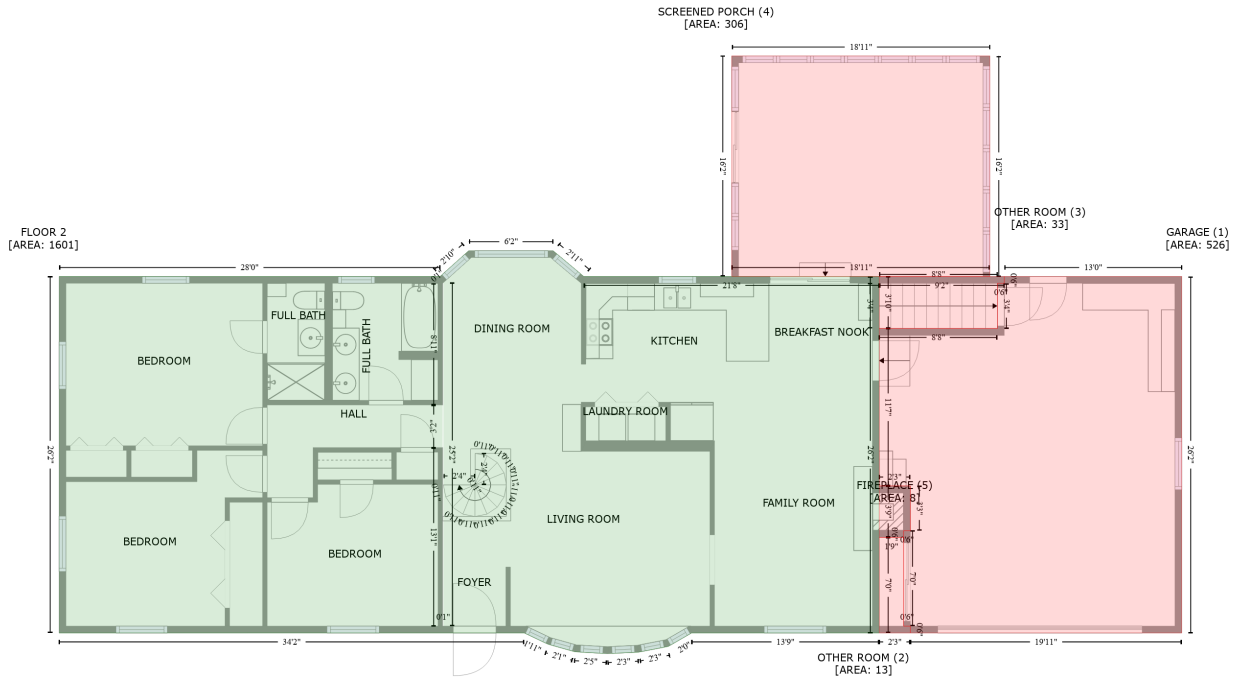
Below Ground  
[AREA: 1386]



Space	Area (sq. ft)	Calculation <small>Coordinate Polygon Area Algorithm using inches</small>
Below Ground (Living area)	1386	$-\left((640.4 + 640.4) * (421.4 - 473.2) + (640.4 + 536.4) * (473.2 - 473.2) + (536.4 + 530.4) * (473.2 - 471.2) + (530.4 + 443.6) * (471.2 - 471.2) + (443.6 + 443.6) * (471.2 - 735.2) + (443.6 + -160.7) * (735.2 - 735.2) + (-160.7 + -160.7) * (735.2 - 421.4) + (-160.7 + 640.4) * (421.4 - 421.4)\right) * 0.5 * 0.00694$
STORAGE (Non-living area)	77	$-\left((530.4 + 530.4) * (614.9 - 618.9) + (530.4 + 536.4) * (618.9 - 618.9) + (536.4 + 536.4) * (618.9 - 735.2) + (536.4 + 443.6) * (735.2 - 735.2) + (443.6 + 443.6) * (735.2 - 614.9) + (443.6 + 530.4) * (614.9 - 614.9)\right) * 0.5 * 0.00694$
STORAGE (Non-living area)	93	$-\left((530.4 + 536.4) * (471.2 - 473.2) + (536.4 + 536.4) * (473.2 - 618.9) + (536.4 + 530.4) * (618.9 - 618.9) + (530.4 + 530.4) * (618.9 - 614.9) + (530.4 + 443.6) * (614.9 - 614.9) + (443.6 + 443.6) * (614.9 - 471.2) + (443.6 + 530.4) * (471.2 - 471.2)\right) * 0.5 * 0.00694$

# 1360 County Road 2800 N, Rantoul, Illinois, United States

Gross Living Area: 1601 sq. ft



Space	Area (sq. ft)	Calculation
FLOOR 2 (Living area)	1601	Coordinate Polygon Area Algorithm using inches $-((269.1 + 296.1) * (393.4 - 416.1) + (296.1 + 556.4) * (416.1 - 416.1) + (556.4 + 556.4) * (416.1 - 729.9) + (556.4 + 391.1) * (729.9 - 729.9) + (391.1 + 370.6) * (729.9 - 741.7) + (370.6 + 344.4) * (741.7 - 746.8) + (344.4 + 317) * (746.8 - 748.1) + (317 + 288.4) * (748.1 - 746.5) + (288.4 + 264.5) * (746.5 - 739.7) + (264.5 + 243.8) * (739.7 - 729.9) + (243.8 + -165.9) * (729.9 - 729.9) + (-165.9 + -165.9) * (729.9 - 416.1) + (-165.9 + 169.6) * (416.1 - 416.1) + (169.6 + 194.9) * (416.1 - 393.4) + (194.9 + 269.1) * (393.4 - 393.4)) * 0.5 * 0.00694 + -((172.5 + 171.9) * (421.7 - 422.1) + (171.9 + 171.9) * (422.1 - 529.2) + (171.9 + 171.8) * (529.2 - 566.8) + (171.8 + 171.8) * (566.8 - 723.9) + (171.8 + 172.5) * (723.9 - 723.9) + (172.5 + 172.5) * (723.9 - 421.7)) * 0.5 * 0.00694$
GARAGE (Non-living area)	526	$-((822.8 + 822.8) * (416.1 - 729.9) + (822.8 + 583.8) * (729.9 - 729.9) + (583.8 + 583.8) * (729.9 - 723.9) + (583.8 + 577.8) * (723.9 - 723.9) + (577.8 + 577.8) * (723.9 - 639.9) + (577.8 + 583.8) * (639.9 - 639.9) + (583.8 + 583.8) * (639.9 - 600.5) + (583.8 + 556.4) * (600.5 - 600.5) + (556.4 + 556.4) * (600.5 - 462) + (556.4 + 660.5) * (462 - 462) + (660.5 + 660.5) * (462 - 422.1) + (660.5 + 666.5) * (422.1 - 422.1) + (666.5 + 666.5) * (422.1 - 416.1) + (666.5 + 822.8) * (416.1 - 416.1)) * 0.5 * 0.00694$
OTHER ROOM (Non-living area)	13	$-((577.8 + 577.8) * (645.8 - 723.9) + (577.8 + 583.8) * (723.9 - 723.9) + (583.8 + 583.8) * (723.9 - 729.9) + (583.8 + 556.4) * (729.9 - 729.9) + (556.4 + 556.4) * (729.9 - 645.8) + (556.4 + 577.8) * (645.8 - 645.8)) * 0.5 * 0.00694$
OTHER ROOM (Non-living area)	33	$-((666.5 + 666.5) * (416.1 - 422.1) + (666.5 + 660.5) * (422.1 - 422.1) + (660.5 + 660.5) * (422.1 - 462) + (660.5 + 556.4) * (462 - 462) + (556.4 + 556.4) * (462 - 416.1) + (556.4 + 666.5) * (416.1 - 416.1)) * 0.5 * 0.00694$
SCREENED PORCH (Non-living area)	306	$-((653.8 + 653.8) * (222.1 - 416.1) + (653.8 + 426.5) * (416.1 - 416.1) + (426.5 + 426.5) * (416.1 - 222.1) + (426.5 + 653.8) * (222.1 - 222.1)) * 0.5 * 0.00694$
FIREPLACE (Non-living area)	8	$-((583.8 + 583.8) * (600.5 - 639.9) + (583.8 + 577.8) * (639.9 - 639.9) + (577.8 + 577.8) * (639.9 - 645.8) + (577.8 + 556.4) * (645.8 - 645.8) + (556.4 + 556.4) * (645.8 - 600.5) + (556.4 + 583.8) * (600.5 - 600.5)) * 0.5 * 0.00694$