






961 Scenery Dr, Elizabeth, PA, US



Property Summary

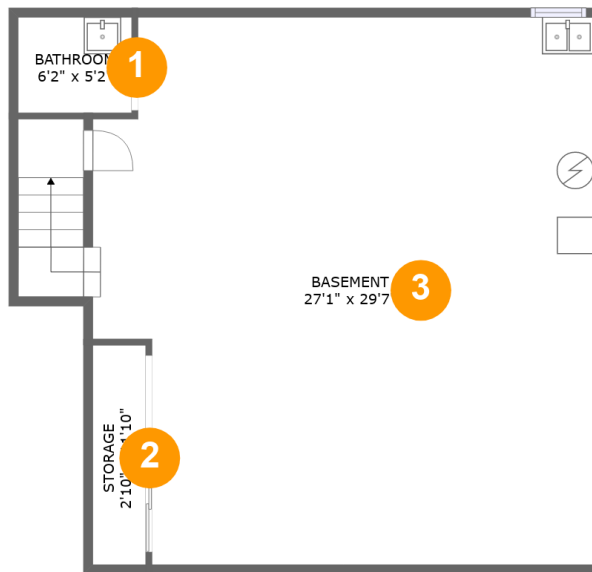
 **1** garages  **4** bedrooms  **2** bathrooms  **0** half baths

 **2** floors

 **2,742** Gross Living Area sqft

 **5,282** total sqft

961 Scenery Dr, Elizabeth, PA, US



Room Dimensions

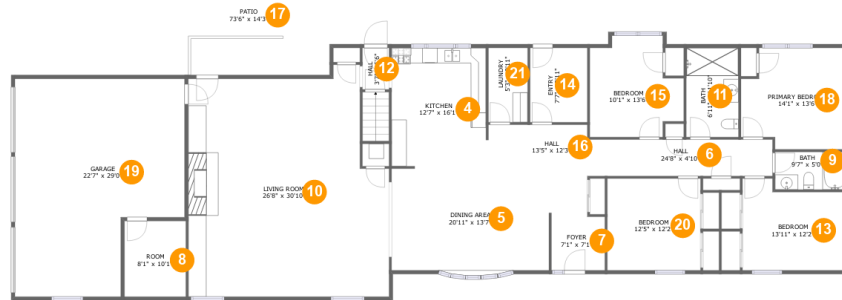
Floor 1

Total sqft: 924

Living area: 0

#	Room name	Dimensions	Area (sqft)	Counted as Living Area
1	Bathroom	6'2" x 5'2"	32 sq. ft	No
2	Storage	2'10" x 11'10"	34 sq. ft	No
3	Basement	27'1" x 29'7"	784 sq. ft	No

961 Scenery Dr, Elizabeth, PA, US



Room Dimensions

Floor 2

Total sqft: 4358

Living area: 2742

#	Room name	Dimensions	Area (sqft)	Counted as Living Area
4	Kitchen	12'7" x 16'1"	200 sq. ft	Yes
5	Dining Area	20'11" x 13'7"	288 sq. ft	Yes
6	Hall	24'8" x 4'10"	119 sq. ft	Yes
7	Foyer	7'1" x 7'1"	51 sq. ft	Yes
8	Room	8'1" x 10'1"	82 sq. ft	No
9	Bath	9'7" x 5'0"	48 sq. ft	Yes
10	Living Room	26'8" x 30'10"	734 sq. ft	Yes
11	Bath	6'11" x 11'10"	82 sq. ft	Yes
12	Hall	3'7" x 5'6"	20 sq. ft	Yes
13	Bedroom	13'11" x 12'2"	152 sq. ft	Yes
14	Entry	7'7" x 9'11"	75 sq. ft	Yes

Scan captured on Sat, 12 Oct 2024 16:28:17 GMT

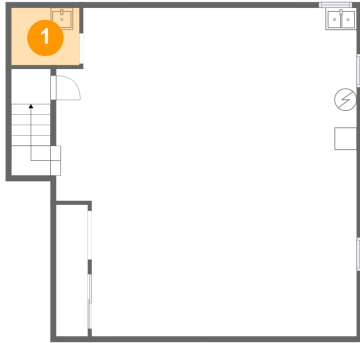
Information is calculated by CubiCasa technology; deemed highly reliable but not guaranteed.

961 Scenery Dr,Elizabeth,PA,US

#	Room name	Dimensions	Area (sqft)	Counted as Living Area
15	Bedroom	10'1" x 13'6"	142 sq. ft	Yes
16	Hall	13'5" x 12'3"	111 sq. ft	Yes
17	Patio	73'6" x 14'3"	923 sq. ft	No
18	Primary Bedroom	14'1" x 13'6"	173 sq. ft	Yes
19	Garage	22'7" x 29'0"	564 sq. ft	No
20	Bedroom	12'5" x 12'2"	151 sq. ft	Yes
21	Laundry	5'3" x 9'11"	51 sq. ft	Yes

961 Scenery Dr, Elizabeth, PA, US

1 Floor 1 - Bathroom



Dimensions: 6'2" x 5'2"
Area: 32 sq. ft
Counted as Living Area: No

Heated: Yes
Finished: Yes
Enclosed: Yes
Contiguous: No
Permitted: Yes
Wet Space: No
Addition: No
Conversion: No

2 Floor 1 - Storage



Dimensions: 2'10" x 11'10"
Area: 34 sq. ft
Counted as Living Area: No

Heated: No
Finished: No
Enclosed: No
Contiguous: Yes
Permitted: Yes
Wet Space: No
Addition: No
Conversion: No

961 Scenery Dr, Elizabeth, PA, US

3 Floor 1 - Basement



Dimensions: 27'1" x 29'7"
Area: 784 sq. ft
Counted as Living Area: No

Heated: Yes
Finished: Yes
Enclosed: Yes
Contiguous: No
Permitted: Yes
Wet Space: No
Addition: No
Conversion: No

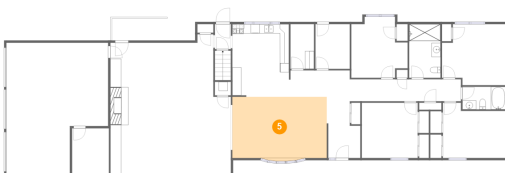
4 Floor 2 - Kitchen



Dimensions: 12'7" x 16'1"
Area: 200 sq. ft
Counted as Living Area:
Yes

Heated: Yes
Finished: Yes
Enclosed: Yes
Contiguous:
Yes
Permitted: Yes
Wet Space: No
Addition: No
Conversion: No

5 Floor 2 - Dining Area



Dimensions: 20'11" x 13'7"
Area: 288 sq. ft
Counted as Living Area:
Yes

Heated: Yes
Finished: Yes
Enclosed: Yes
Contiguous:
Yes
Permitted: Yes
Wet Space: No
Addition: No
Conversion: No

961 Scenery Dr, Elizabeth, PA, US

6 Floor 2 - Hall



Dimensions: 24'8" x 4'10"
Area: 119 sq. ft
Counted as Living Area:
Yes

Heated: Yes
Finished: Yes
Enclosed: Yes
Contiguous:
Yes
Permitted: Yes
Wet Space: No
Addition: No
Conversion: No

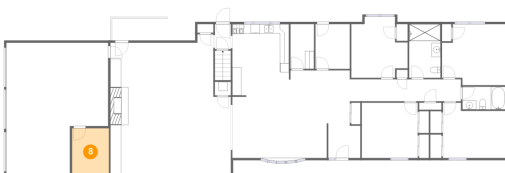
7 Floor 2 - Foyer



Dimensions: 7'1" x 7'1"
Area: 51 sq. ft
Counted as Living Area:
Yes

Heated: Yes
Finished: Yes
Enclosed: Yes
Contiguous:
Yes
Permitted: Yes
Wet Space: No
Addition: No
Conversion: No

8 Floor 2 - Room



Dimensions: 8'1" x 10'1"
Area: 82 sq. ft
Counted as Living Area: No

Heated: Yes
Finished: Yes
Enclosed: Yes
Contiguous: No
Permitted: Yes
Wet Space: No
Addition: No
Conversion: No

961 Scenery Dr, Elizabeth, PA, US

9 Floor 2 - Bath



Dimensions: 9'7" x 5'0"
Area: 48 sq. ft
Counted as Living Area:
Yes

Heated: Yes
Finished: Yes
Enclosed: Yes
Contiguous:
Yes
Permitted: Yes
Wet Space: Yes
Addition: No
Conversion: No

10 Floor 2 - Living Room



Dimensions: 26'8" x 30'10"
Area: 734 sq. ft
Counted as Living Area:
Yes

Heated: Yes
Finished: Yes
Enclosed: Yes
Contiguous:
Yes
Permitted: Yes
Wet Space: No
Addition: No
Conversion: No

11 Floor 2 - Bath



Dimensions: 6'11" x 11'10"
Area: 82 sq. ft
Counted as Living Area:
Yes

Heated: Yes
Finished: Yes
Enclosed: Yes
Contiguous:
Yes
Permitted: Yes
Wet Space: Yes
Addition: No
Conversion: No

961 Scenery Dr, Elizabeth, PA, US

12 Floor 2 - Hall



Dimensions: 3'7" x 5'6"
Area: 20 sq. ft
Counted as Living Area:
Yes

Heated: Yes
Finished: Yes
Enclosed: Yes
Contiguous:
Yes
Permitted: Yes
Wet Space: No
Addition: No
Conversion: No

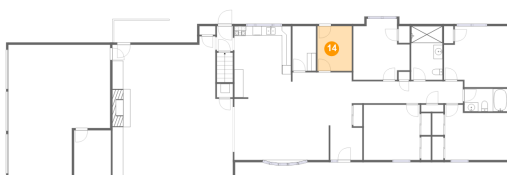
13 Floor 2 - Bedroom



Dimensions: 13'11" x 12'2"
Area: 152 sq. ft
Counted as Living Area:
Yes

Heated: Yes
Finished: Yes
Enclosed: Yes
Contiguous:
Yes
Permitted: Yes
Wet Space: No
Addition: No
Conversion: No

14 Floor 2 - Entry



Dimensions: 7'7" x 9'11"
Area: 75 sq. ft
Counted as Living Area:
Yes

Heated: Yes
Finished: Yes
Enclosed: Yes
Contiguous:
Yes
Permitted: Yes
Wet Space: No
Addition: No
Conversion: No

961 Scenery Dr, Elizabeth, PA, US

15 Floor 2 - Bedroom



Dimensions: 10'1" x 13'6"
Area: 142 sq. ft
Counted as Living Area:
Yes

Heated: Yes
Finished: Yes
Enclosed: Yes
Contiguous:
Yes
Permitted: Yes
Wet Space: No
Addition: No
Conversion: No

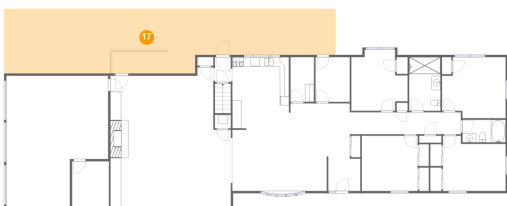
16 Floor 2 - Hall



Dimensions: 13'5" x 12'3"
Area: 111 sq. ft
Counted as Living Area:
Yes

Heated: Yes
Finished: Yes
Enclosed: Yes
Contiguous:
Yes
Permitted: Yes
Wet Space: No
Addition: No
Conversion: No

17 Floor 2 - Patio



Dimensions: 73'6" x 14'3"
Area: 923 sq. ft
Counted as Living Area: No

Heated: No
Finished: Yes
Enclosed: No
Contiguous: Yes
Permitted: Yes
Wet Space: No
Addition: No
Conversion: No

961 Scenery Dr, Elizabeth, PA, US

18 Floor 2 - Primary Bedroom



Dimensions: 14'1" x 13'6"
Area: 173 sq. ft
Counted as Living Area:
Yes

Heated: Yes
Finished: Yes
Enclosed: Yes
Contiguous:
Yes
Permitted: Yes
Wet Space: No
Addition: No
Conversion: No

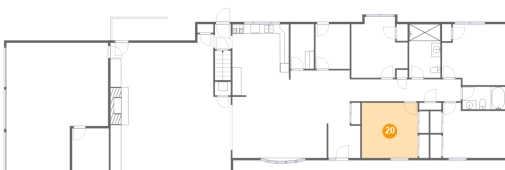
19 Floor 2 - Garage



Dimensions: 22'7" x 29'0"
Area: 564 sq. ft
Counted as Living Area: No

Heated: No
Finished: No
Enclosed: Yes
Contiguous: Yes
Permitted: Yes
Wet Space: No
Addition: No
Conversion: No

20 Floor 2 - Bedroom



Dimensions: 12'5" x 12'2"
Area: 151 sq. ft
Counted as Living Area:
Yes

Heated: Yes
Finished: Yes
Enclosed: Yes
Contiguous:
Yes
Permitted: Yes
Wet Space: No
Addition: No
Conversion: No

961 Scenery Dr, Elizabeth, PA, US

21 Floor 2 - Laundry



Dimensions: 5'3" x 9'11"
Area: 51 sq. ft
Counted as Living Area:
Yes

Heated: Yes
Finished: Yes
Enclosed: Yes
Contiguous:
Yes
Permitted: Yes
Wet Space: No
Addition: No
Conversion: No