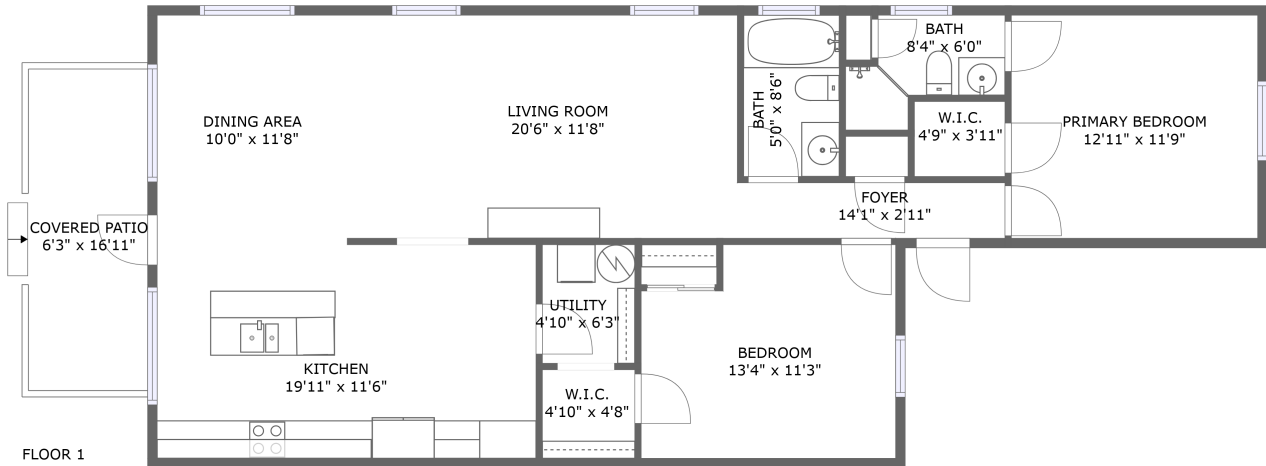



272 Portree Drive, Dunedin Mobile Manor, Dunedin, Pinellas County, Florida, United States, 34698



Property summary


 **0** Garages

 **2** Bedrooms

 **2** Bathrooms

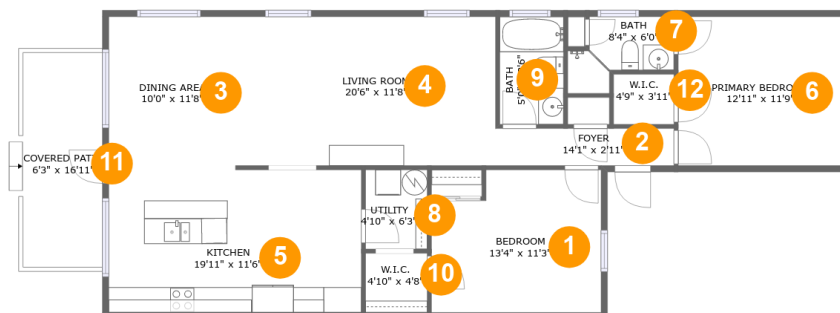
 **0** Half baths

 **1** Floors

 **1,196** Gross living area sqft

 **1,302** Total sqft

272 Portree Drive, Dunedin Mobile Manor, Dunedin, Pinellas County, Florida, United States, 34698



Room dimensions

Floor 1

Total sqft: 1302 Living area: 1196

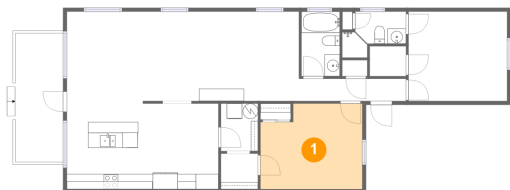
#		Dimensions	sqft	Counted as living area
1	Bedroom	13'4" x 11'3"	139 sq. ft	Yes
2	Foyer	14'1" x 2'11"	41 sq. ft	Yes
3	Dining Area	10'0" x 11'8"	117 sq. ft	Yes
4	Living Room	20'6" x 11'8"	240 sq. ft	Yes
5	Kitchen	19'11" x 11'6"	226 sq. ft	Yes
6	Primary Bedroom	12'11" x 11'9"	151 sq. ft	Yes
7	Bath	8'4" x 6'0"	36 sq. ft	Yes
8	Utility	4'10" x 6'3"	30 sq. ft	Yes
9	Bath	5'0" x 8'6"	42 sq. ft	Yes
10	W.I.C.	4'10" x 4'8"	23 sq. ft	Yes
11	Covered Patio	6'3" x 16'11"	106 sq. ft	No

**272 Portree Drive, Dunedin Mobile Manor, Dunedin,
Pinellas County, Florida, United States, 34698**

#		Dimensions	sqft	Counted as living area
12	W.I.C.	4'9" x 3'11"	19 sq. ft	Yes

272 Portree Drive, Dunedin Mobile Manor, Dunedin, Pinellas County, Florida, United States, 34698

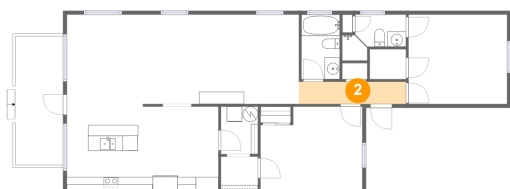
1 Floor 1 - Bedroom



Dimensions: 13'4" x 11'3"
Area: 139 sq. ft
Counted as living area: Yes

Heated: Yes
Finished: Yes
Enclosed: Yes
Contiguous: Yes
Permitted: Yes
Wet space: No
Addition: No
Conversion: No

2 Floor 1 - Foyer

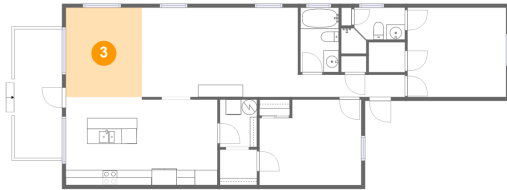


Dimensions: 14'1" x 2'11"
Area: 41 sq. ft
Counted as living area: Yes

Heated: Yes
Finished: Yes
Enclosed: Yes
Contiguous: Yes
Permitted: Yes
Wet space: No
Addition: No
Conversion: No

272 Portree Drive, Dunedin Mobile Manor, Dunedin, Pinellas County, Florida, United States, 34698

3 Floor 1 - Dining Area



Dimensions: 10'0" x 11'8"
Area: 117 sq. ft
Counted as living area: Yes

Heated: Yes
Finished: Yes
Enclosed: Yes
Contiguous: Yes
Permitted: Yes
Wet space: No
Addition: No
Conversion: No

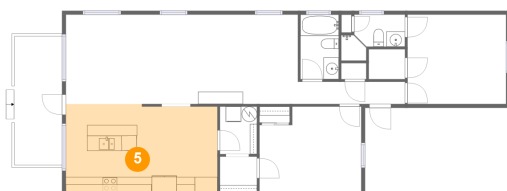
4 Floor 1 - Living Room



Dimensions: 20'6" x 11'8"
Area: 240 sq. ft
Counted as living area: Yes

Heated: Yes
Finished: Yes
Enclosed: Yes
Contiguous: Yes
Permitted: Yes
Wet space: No
Addition: No
Conversion: No

5 Floor 1 - Kitchen

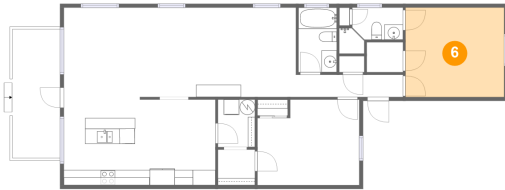


Dimensions: 19'11" x 11'6"
Area: 226 sq. ft
Counted as living area: Yes

Heated: Yes
Finished: Yes
Enclosed: Yes
Contiguous: Yes
Permitted: Yes
Wet space: No
Addition: No
Conversion: No

272 Portree Drive, Dunedin Mobile Manor, Dunedin, Pinellas County, Florida, United States, 34698

6 Floor 1 - Primary Bedroom



Dimensions: 12'11" x 11'9"
Area: 151 sq. ft
Counted as living area: Yes

Heated: Yes
Finished: Yes
Enclosed: Yes
Contiguous: Yes
Permitted: Yes
Wet space: No
Addition: No
Conversion: No

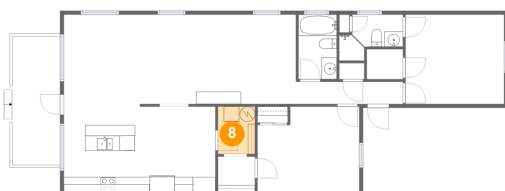
7 Floor 1 - Bath



Dimensions: 8'4" x 6'0"
Area: 36 sq. ft
Counted as living area: Yes

Heated: Yes
Finished: Yes
Enclosed: Yes
Contiguous: Yes
Permitted: Yes
Wet space: Yes
Addition: No
Conversion: No

8 Floor 1 - Utility

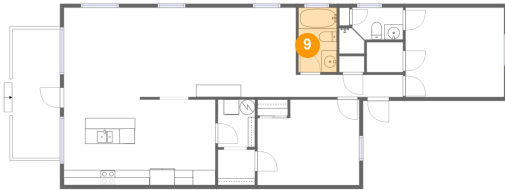


Dimensions: 4'10" x 6'3"
Area: 30 sq. ft
Counted as living area: Yes

Heated: Yes
Finished: Yes
Enclosed: Yes
Contiguous: Yes
Permitted: Yes
Wet space: No
Addition: No
Conversion: No

**272 Portree Drive, Dunedin Mobile Manor, Dunedin,
Pinellas County, Florida, United States, 34698**

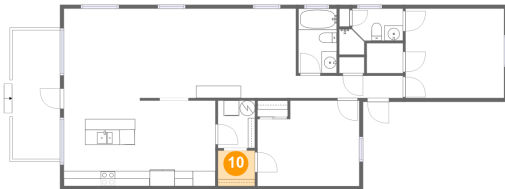
9 Floor 1 - Bath



Dimensions: 5'0" x 8'6"
Area: 42 sq. ft
Counted as living area: Yes

Heated: Yes
Finished: Yes
Enclosed: Yes
Contiguous: Yes
Permitted: Yes
Wet space: Yes
Addition: No
Conversion: No

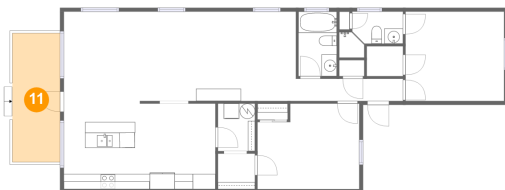
10 Floor 1 - W.I.C.



Dimensions: 4'10" x 4'8"
Area: 23 sq. ft
Counted as living area: Yes

Heated: Yes
Finished: Yes
Enclosed: Yes
Contiguous: Yes
Permitted: Yes
Wet space: No
Addition: No
Conversion: No

11 Floor 1 - Covered Patio

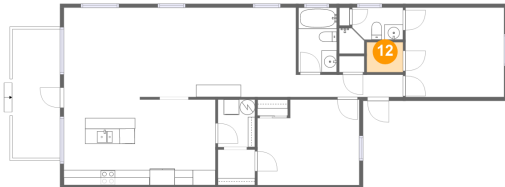


Dimensions: 6'3" x 16'11"
Area: 106 sq. ft
Counted as living area: No

Heated: No
Finished: Yes
Enclosed: No
Contiguous: Yes
Permitted: Yes
Wet space: No
Addition: No
Conversion: No

**272 Portree Drive, Dunedin Mobile Manor, Dunedin,
Pinellas County, Florida, United States, 34698**

12 Floor 1 - W.I.C.



Dimensions: 4'9" x 3'11"
Area: 19 sq. ft
Counted as living area: Yes

Heated: Yes
Finished: Yes
Enclosed: Yes
Contiguous: Yes
Permitted: Yes
Wet space: No
Addition: No
Conversion: No