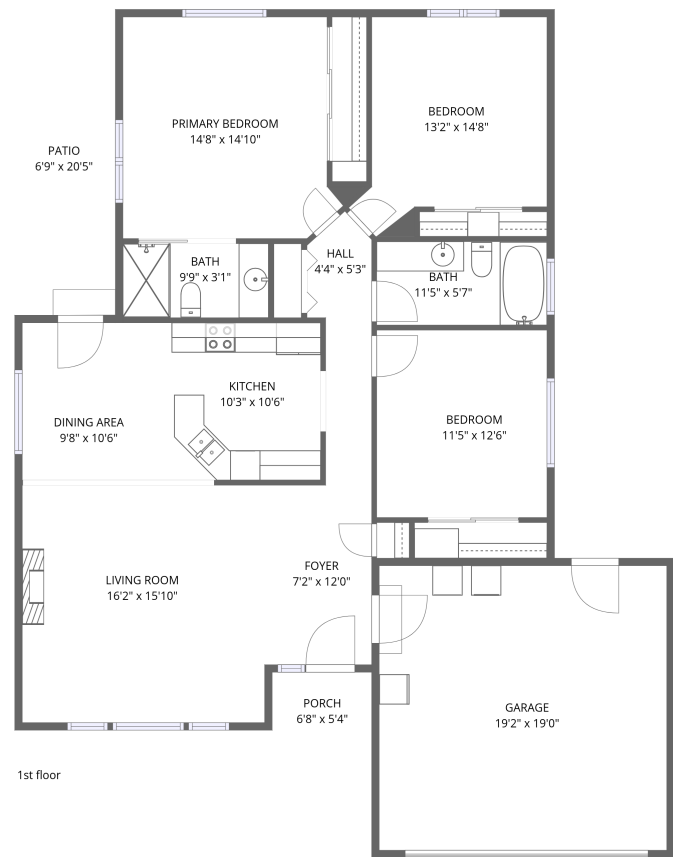


Home data report

1242 Hawk Dr,Central Point,OR,US




Total Area: 1360 sq. ft


1st Floor: 1360 sq. ft

Excluded: Garage 366 sq. ft, Porch 36 sq. ft, Patio 137 sq. ft, Walls: 113 sq. ft

Property summary

 1 Floors

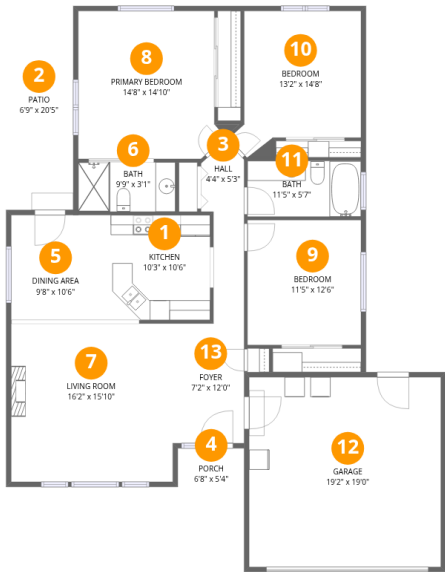
 3 Bedrooms

 2 Bathrooms

 1 Garages

Home data report

1242 Hawk Dr,Central Point,OR,US



Room dimensions

Floor 1 Total:1360sqft Excluded: 539sqft

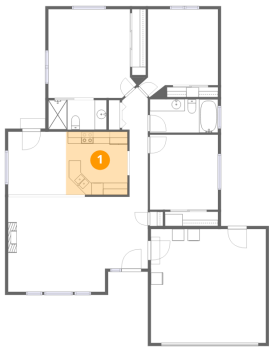
#		Dimensions	sqft	Counted as living area
1	Kitchen	10'3" x 10'6"	108 sq. ft	Yes
2	Patio	6'9" x 20'5"	137 sq. ft	No
3	Hall	4'4" x 5'3"	23 sq. ft	Yes
4	Porch	6'8" x 5'4"	36 sq. ft	No
5	Dining Area	9'8" x 10'6"	102 sq. ft	Yes
6	Bath	9'9" x 3'1"	30 sq. ft	Yes
7	Living Room	16'2" x 15'10"	257 sq. ft	Yes
8	Primary Bedroom	14'8" x 14'10"	217 sq. ft	Yes
9	Bedroom	11'5" x 12'6"	143 sq. ft	Yes
10	Bedroom	13'2" x 14'8"	192 sq. ft	Yes
11	Bath	11'5" x 5'7"	64 sq. ft	Yes

Home data report

1242 Hawk Dr,Central Point,OR,US

#		Dimensions	sqft	Counted as living area
12	Garage	19'2" x 19'0"	365 sq. ft	No
13	Foyer	7'2" x 12'0"	86 sq. ft	Yes

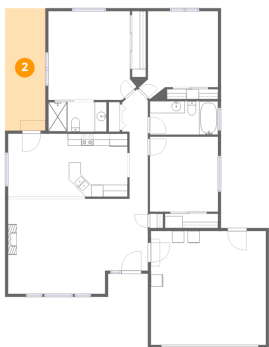
1 Floor 1 - Kitchen



Dimensions: 10'3" x 10'6"  
Area: 108 sq. ft  
Counted as living area: Yes

Heated: Yes  
Finished: Yes  
Enclosed: Yes  
Contiguous: Yes  
Permitted: Yes  
Wet space: No  
Addition: No  
Conversion: No

2 Floor 1 - Patio



Dimensions: 6'9" x 20'5"  
Area: 137 sq. ft  
Counted as living area: No

Heated: No  
Finished: No  
Enclosed: No  
Contiguous: Yes  
Permitted: Yes  
Wet space: No  
Addition: No  
Conversion: No

3 Floor 1 - Hall



Dimensions: 4'4" x 5'3"  
Area: 23 sq. ft  
Counted as living area: Yes

Heated: Yes  
Finished: Yes  
Enclosed: Yes  
Contiguous: Yes  
Permitted: Yes  
Wet space: No  
Addition: No  
Conversion: No

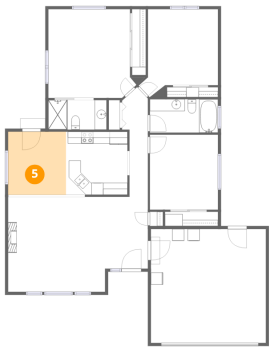
4 Floor 1 - Porch



Dimensions: 6'8" x 5'4"  
Area: 36 sq. ft  
Counted as living area: No

Heated: No  
Finished: No  
Enclosed: No  
Contiguous: Yes  
Permitted: Yes  
Wet space: No  
Addition: No  
Conversion: No

5 Floor 1 - Dining Area



Dimensions: 9'8" x 10'6"  
Area: 102 sq. ft  
Counted as living area: Yes

Heated: Yes  
Finished: Yes  
Enclosed: Yes  
Contiguous: Yes  
Permitted: Yes  
Wet space: No  
Addition: No  
Conversion: No

6 Floor 1 - Bath



Dimensions: 9'9" x 3'1"  
Area: 30 sq. ft  
Counted as living area: Yes

Heated: Yes  
Finished: Yes  
Enclosed: Yes  
Contiguous: Yes  
Permitted: Yes  
Wet space: Yes  
Addition: No  
Conversion: No

7 Floor 1 - Living Room



Dimensions: 16'2" x 15'10"  
Area: 257 sq. ft  
Counted as living area: Yes

Heated: Yes  
Finished: Yes  
Enclosed: Yes  
Contiguous: Yes  
Permitted: Yes  
Wet space: No  
Addition: No  
Conversion: No

8 Floor 1 - Primary Bedroom



Dimensions: 14'8" x 14'10"  
Area: 217 sq. ft  
Counted as living area: Yes

Heated: Yes  
Finished: Yes  
Enclosed: Yes  
Contiguous: Yes  
Permitted: Yes  
Wet space: No  
Addition: No  
Conversion: No

## 9 Floor 1 - Bedroom



Dimensions: 11'5" x 12'6"  
Area: 143 sq. ft  
Counted as living area: Yes

Heated: Yes  
Finished: Yes  
Enclosed: Yes  
Contiguous: Yes  
Permitted: Yes  
Wet space: No  
Addition: No  
Conversion: No

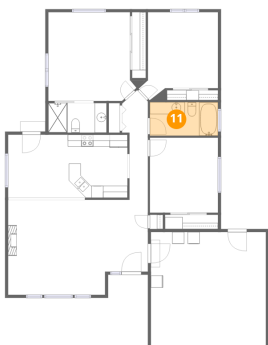
## 10 Floor 1 - Bedroom



Dimensions: 13'2" x 14'8"  
Area: 192 sq. ft  
Counted as living area: Yes

Heated: Yes  
Finished: Yes  
Enclosed: Yes  
Contiguous: Yes  
Permitted: Yes  
Wet space: No  
Addition: No  
Conversion: No

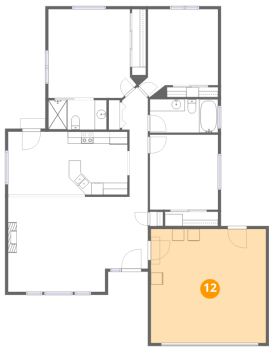
## 11 Floor 1 - Bath



Dimensions: 11'5" x 5'7"  
Area: 64 sq. ft  
Counted as living area: Yes

Heated: Yes  
Finished: Yes  
Enclosed: Yes  
Contiguous: Yes  
Permitted: Yes  
Wet space: Yes  
Addition: No  
Conversion: No

12 Floor 1 - Garage



Dimensions: 19'2" x 19'0"  
Area: 365 sq. ft  
Counted as living area: No

Heated: No  
Finished: No  
Enclosed: Yes  
Contiguous: Yes  
Permitted: Yes  
Wet space: No  
Addition: No  
Conversion: No

13 Floor 1 - Foyer



Dimensions: 7'2" x 12'0"  
Area: 86 sq. ft  
Counted as living area: Yes

Heated: Yes  
Finished: Yes  
Enclosed: Yes  
Contiguous: Yes  
Permitted: Yes  
Wet space: No  
Addition: No  
Conversion: No