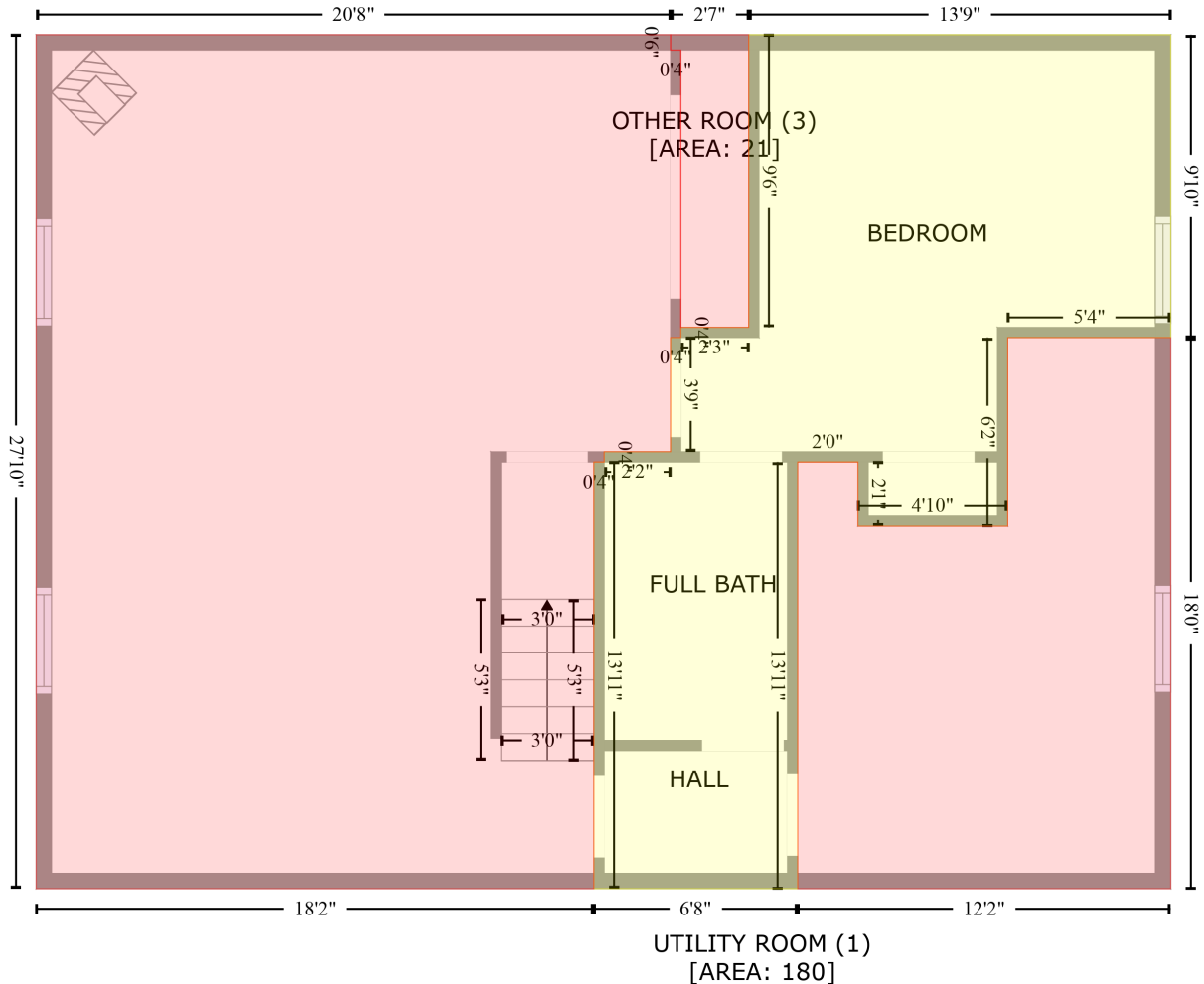


73 Killoran Cres, Stratford, Ontario, Canada

Gross Living Area: 1052 sq. ft

BASEMENT (2)
[AREA: 542]

Below Ground
[AREA: 284]



Space	Area (sq. ft)	Calculation <small>Coordinate Polygon Area Algorithm using inches</small>
Below Ground (Living area)	284	$-\left((456.4 + 456.4) * (64.4 - 182.8) + (456.4 + 392.7) * (182.8 - 182.8) + (392.7 + 392.7) * (182.8 - 256.6) + (392.7 + 334.2) * (256.6 - 256.6) + (334.2 + 334.2) * (256.6 - 231.4) + (334.2 + 310.7) * (231.4 - 231.4) + (310.7 + 310.7) * (231.4 - 398.3) + (310.7 + 231.1) * (398.3 - 398.3) + (231.1 + 231.1) * (398.3 - 231.4) + (231.1 + 235.1) * (231.4 - 231.4) + (235.1 + 235.1) * (231.4 - 227.4) + (235.1 + 261) * (227.4 - 227.4) + (261 + 261) * (227.4 - 182.8) + (261 + 265) * (182.8 - 182.8) + (265 + 265) * (182.8 - 178.8) + (265 + 291.6) * (178.8 - 178.8) + (291.6 + 291.6) * (178.8 - 64.4) + (291.6 + 456.4) * (64.4 - 64.4)\right) * 0.5 * 0.00694$
UTILITY ROOM (Non-living area)	180	$-\left((456.4 + 456.4) * (182.8 - 398.3) + (456.4 + 310.7) * (398.3 - 398.3) + (310.7 + 310.7) * (398.3 - 231.4) + (310.7 + 334.2) * (231.4 - 231.4) + (334.2 + 334.2) * (231.4 - 256.6) + (334.2 + 392.7) * (256.6 - 256.6) + (392.7 + 392.7) * (256.6 - 182.8) + (392.7 + 456.4) * (182.8 - 182.8)\right) * 0.5 * 0.00694$

73 Killoran Cres, Stratford, Ontario, Canada

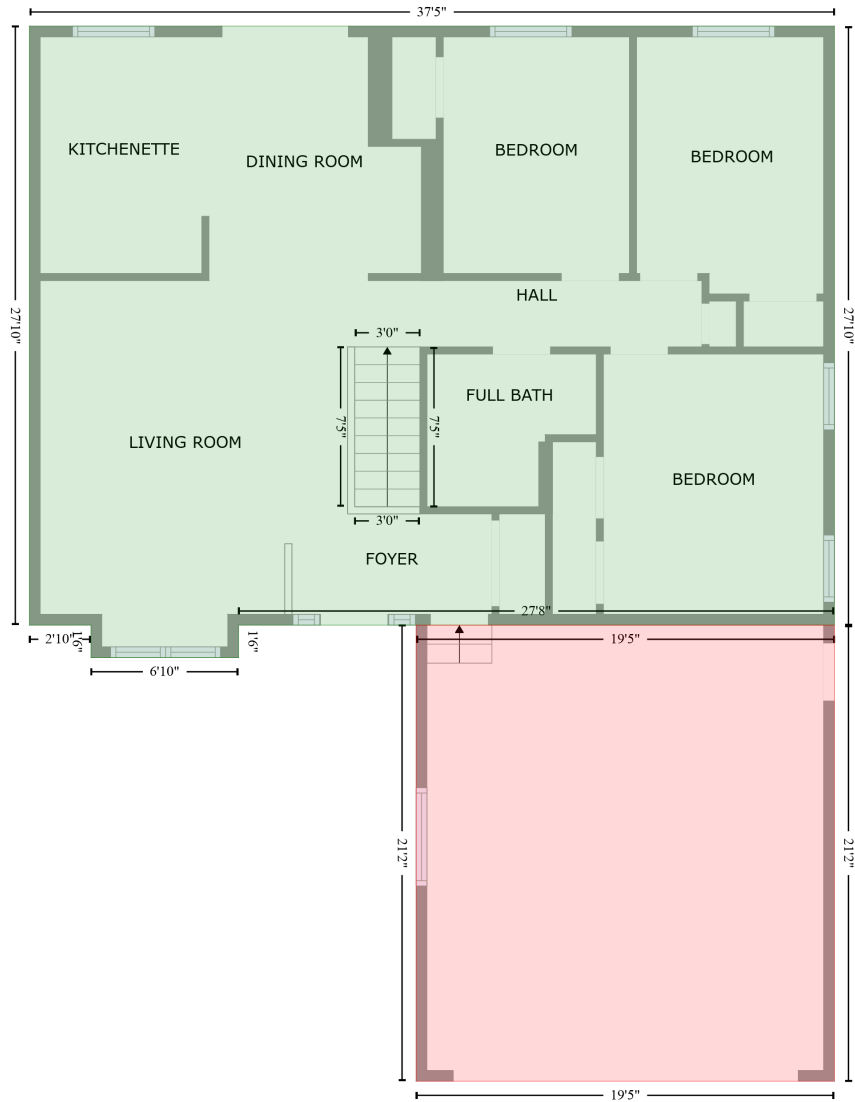
Gross Living Area: 1052 sq. ft

Space	Area (sq. ft)	Calculation <small>Coordinate Polygon Area Algorithm using inches</small>
BASEMENT (Non-living area)	542	$-\left((261 + 261) * (64.4 - 70.4) + (261 + 265) * (70.4 - 70.4) + (265 + 265) * (70.4 - 182.8) + (265 + 261) * (182.8 - 182.8) + (261 + 261) * (182.8 - 227.4) + (261 + 235.1) * (227.4 - 227.4) + (235.1 + 235.1) * (227.4 - 231.4) + (235.1 + 231.1) * (231.4 - 231.4) + (231.1 + 231.1) * (231.4 - 398.3) + (231.1 + 13.3) * (398.3 - 398.3) + (13.3 + 13.3) * (398.3 - 64.4) + (13.3 + 261) * (64.4 - 64.4)\right) * 0.5 * 0.00694$
OTHER ROOM (Non-living area)	21	$-\left((291.6 + 291.6) * (64.4 - 178.8) + (291.6 + 265) * (178.8 - 178.8) + (265 + 265) * (178.8 - 70.4) + (265 + 261) * (70.4 - 70.4) + (261 + 261) * (70.4 - 64.4) + (261 + 291.6) * (64.4 - 64.4)\right) * 0.5 * 0.00694$

73 Killoran Cres, Stratford, Ontario, Canada

Gross Living Area: 1052 sq. ft

FLOOR 2
[AREA: 1052]



GARAGE (1)
[AREA: 412]

Space	Area (sq. ft)	Calculation <small>Coordinate Polygon Area Algorithm using inches</small>
FLOOR 2 (Living area)	1052	$-((462.4 + 462.4) * (64.4 - 398.3) + (462.4 + 129.9) * (398.3 - 398.3) + (129.9 + 129.9) * (398.3 - 416.4) + (129.9 + 47.6) * (416.4 - 416.4) + (47.6 + 47.6) * (416.4 - 398.3) + (47.6 + 13.3) * (398.3 - 398.3) + (13.3 + 13.3) * (398.3 - 64.4) + (13.3 + 462.4) * (64.4 - 64.4)) * 0.5 + 0.00694$
GARAGE (Non-living area)	412	$-((462.4 + 462.4) * (398.3 - 652.6) + (462.4 + 229) * (652.6 - 652.6) + (229 + 229) * (652.6 - 398.3) + (229 + 462.4) * (398.3 - 398.3)) * 0.5 + 0.00694$