

Home data report

617 Lechner Ln,Custer,SD,US



**Total Area: 1680 sq. ft**  
Below Ground: 795 sq. ft, 1st Floor: 885 sq. ft  
Excluded: Utility 82 sq. ft, Walls: 126 sq. ft

Property summary

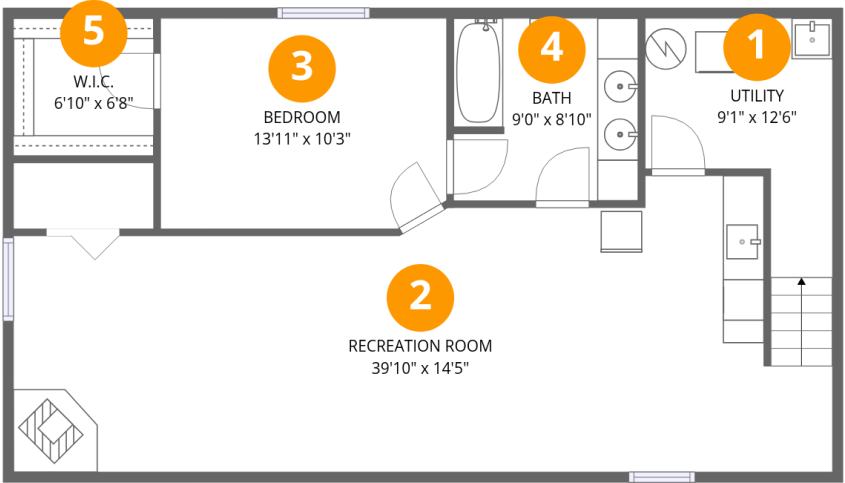
 **2** Floors

 **3** Bedrooms

 **2** Bathrooms

Home data report

617 Lechner Ln,Custer,SD,US



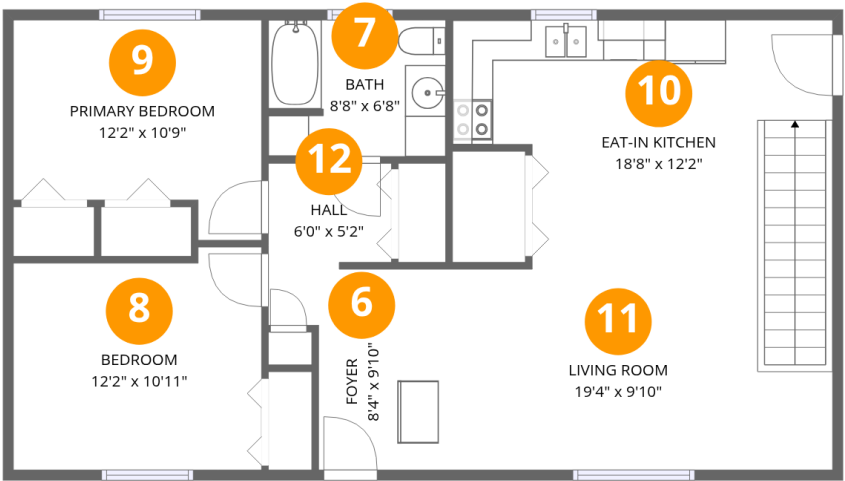
Room dimensions

Floor 1 Below grade Total:795sqft    Excluded: 82sqft

#		Dimensions	sqft	Counted as living area
1	Utility	9'1" x 12'6"	82 sq. ft	No
2	Recreation Room	39'10" x 14'5"	480 sq. ft	Yes
3	Bedroom	13'11" x 10'3"	141 sq. ft	Yes
4	Bath	9'0" x 8'10"	79 sq. ft	Yes
5	W.I.C.	6'10" x 6'8"	46 sq. ft	Yes

Home data report

617 Lechner Ln,Custer,SD,US

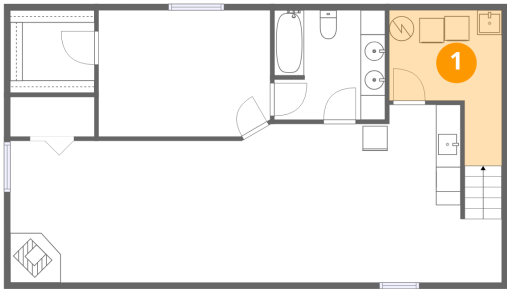


Room dimensions

Floor 2 Total:885sqft Excluded: 0sqft

#		Dimensions	sqft	Counted as living area
6	Foyer	8'4" x 9'10"	64 sq. ft	Yes
7	Bath	8'8" x 6'8"	57 sq. ft	Yes
8	Bedroom	12'2" x 10'11"	126 sq. ft	Yes
9	Primary Bedroom	12'2" x 10'9"	113 sq. ft	Yes
10	Eat-in Kitchen	18'8" x 12'2"	204 sq. ft	Yes
11	Living Room	19'4" x 9'10"	190 sq. ft	Yes
12	Hall	6'0" x 5'2"	30 sq. ft	Yes

1 Floor 1 - Utility



Dimensions: 9'1" x 12'6"  
Area: 82 sq. ft  
Counted as living area: No

Heated: Yes  
Finished: No  
Enclosed: Yes  
Contiguous: Yes  
Permitted: Yes  
Wet space: No  
Addition: No  
Conversion: No

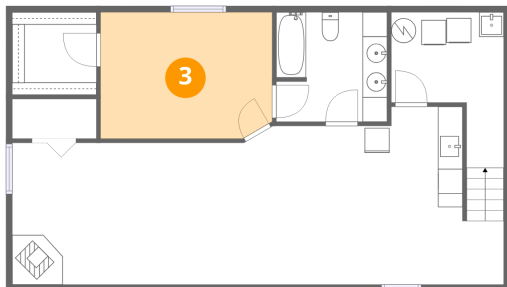
2 Floor 1 - Recreation Room



Dimensions: 39'10" x 14'5"  
Area: 480 sq. ft  
Counted as living area: Yes

Heated: Yes  
Finished: Yes  
Enclosed: Yes  
Contiguous: Yes  
Permitted: Yes  
Wet space: No  
Addition: No  
Conversion: No

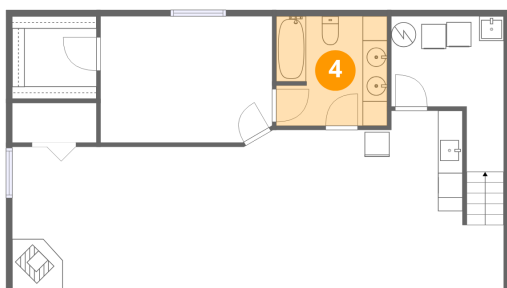
### 3 Floor 1 - Bedroom



Dimensions: 13'11" x 10'3"  
Area: 141 sq. ft  
Counted as living area: Yes

Heated: Yes  
Finished: Yes  
Enclosed: Yes  
Contiguous: Yes  
Permitted: Yes  
Wet space: No  
Addition: No  
Conversion: No

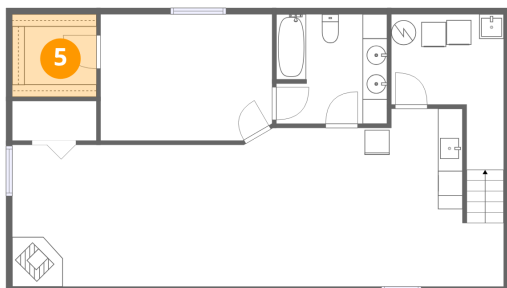
### 4 Floor 1 - Bath



Dimensions: 9'0" x 8'10"  
Area: 79 sq. ft  
Counted as living area: Yes

Heated: Yes  
Finished: Yes  
Enclosed: Yes  
Contiguous: Yes  
Permitted: Yes  
Wet space: Yes  
Addition: No  
Conversion: No

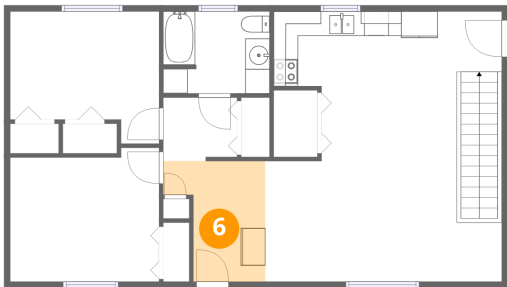
### 5 Floor 1 - W.I.C.



Dimensions: 6'10" x 6'8"  
Area: 46 sq. ft  
Counted as living area: Yes

Heated: Yes  
Finished: Yes  
Enclosed: Yes  
Contiguous: Yes  
Permitted: Yes  
Wet space: No  
Addition: No  
Conversion: No

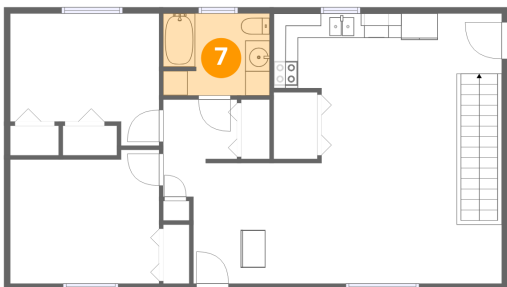
6 Floor 2 - Foyer



Dimensions: 8'4" x 9'10"  
Area: 64 sq. ft  
Counted as living area: Yes

Heated: Yes  
Finished: Yes  
Enclosed: Yes  
Contiguous: Yes  
Permitted: Yes  
Wet space: No  
Addition: No  
Conversion: No

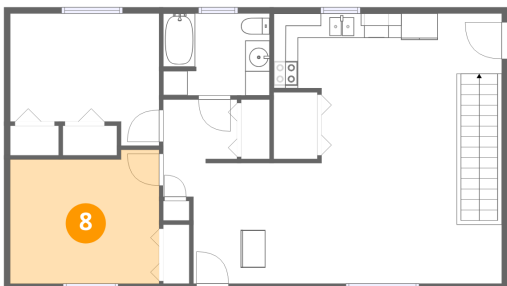
7 Floor 2 - Bath



Dimensions: 8'8" x 6'8"  
Area: 57 sq. ft  
Counted as living area: Yes

Heated: Yes  
Finished: Yes  
Enclosed: Yes  
Contiguous: Yes  
Permitted: Yes  
Wet space: Yes  
Addition: No  
Conversion: No

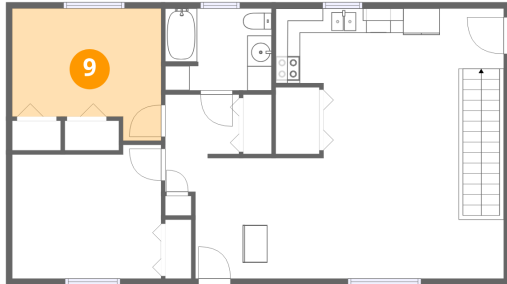
8 Floor 2 - Bedroom



Dimensions: 12'2" x 10'11"  
Area: 126 sq. ft  
Counted as living area: Yes

Heated: Yes  
Finished: Yes  
Enclosed: Yes  
Contiguous: Yes  
Permitted: Yes  
Wet space: No  
Addition: No  
Conversion: No

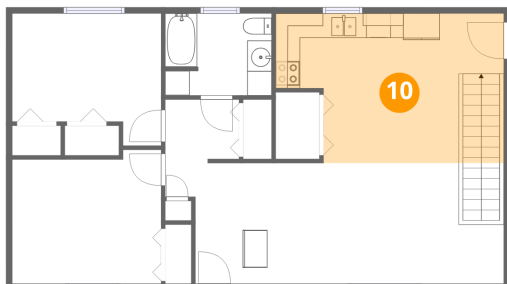
## 9 Floor 2 - Primary Bedroom



Dimensions: 12'2" x 10'9"  
Area: 113 sq. ft  
Counted as living area: Yes

Heated: Yes  
Finished: Yes  
Enclosed: Yes  
Contiguous: Yes  
Permitted: Yes  
Wet space: No  
Addition: No  
Conversion: No

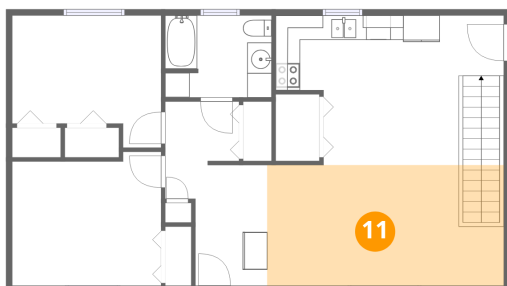
## 10 Floor 2 - Eat-in Kitchen



Dimensions: 18'8" x 12'2"  
Area: 204 sq. ft  
Counted as living area: Yes

Heated: Yes  
Finished: Yes  
Enclosed: Yes  
Contiguous: Yes  
Permitted: Yes  
Wet space: No  
Addition: No  
Conversion: No

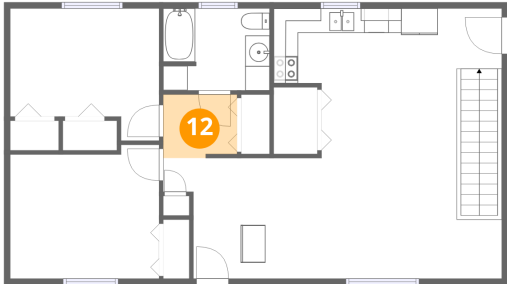
## 11 Floor 2 - Living Room



Dimensions: 19'4" x 9'10"  
Area: 190 sq. ft  
Counted as living area: Yes

Heated: Yes  
Finished: Yes  
Enclosed: Yes  
Contiguous: Yes  
Permitted: Yes  
Wet space: No  
Addition: No  
Conversion: No

12 Floor 2 - Hall



Dimensions: 6'0" x 5'2"  
Area: 30 sq. ft  
Counted as living area: Yes

Heated: Yes  
Finished: Yes  
Enclosed: Yes  
Contiguous: Yes  
Permitted: Yes  
Wet space: No  
Addition: No  
Conversion: No