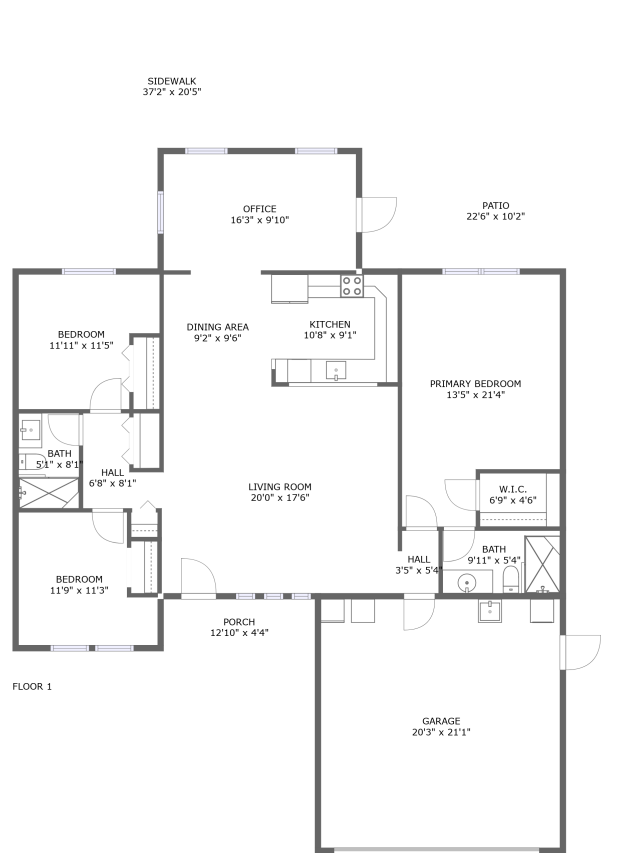






819 Settlers Road, Lake Magdalene, Tampa, Hillsborough County, Florida, United States,

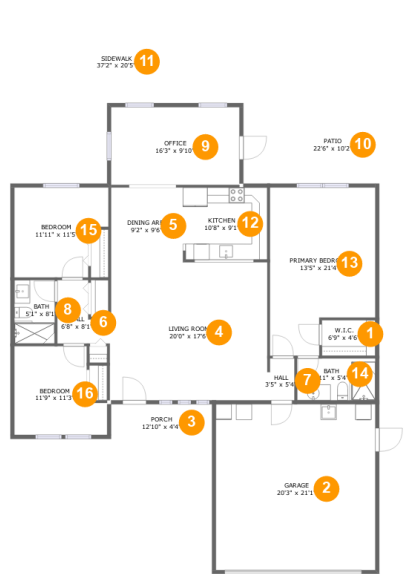


Property Summary

 **1** garages  **3** bedrooms  **2** bathrooms  **0** half baths

 **1** floors  **1,544** Gross Living Area sqft  **2,444** total sqft

819 Settlers Road, Lake Magdalene, Tampa, Hillsborough County, Florida, United States,



Room Dimensions

Floor 1

Total sqft: 2444

Living area: 1544

#	Room name	Dimensions	Area (sqft)	Counted as Living Area
1	W.i.c.	6'9" x 4'6"	31 sq. ft	Yes
2	Garage	20'3" x 21'1"	426 sq. ft	No
3	Porch	12'10" x 4'4"	56 sq. ft	No
4	Living Room	20'0" x 17'6"	349 sq. ft	Yes
5	Dining Area	9'2" x 9'6"	87 sq. ft	Yes
6	Hall	6'8" x 8'1"	40 sq. ft	Yes
7	Hall	3'5" x 5'4"	18 sq. ft	Yes
8	Bath	5'1" x 8'1"	41 sq. ft	Yes
9	Office	16'3" x 9'10"	161 sq. ft	Yes
10	Patio	22'6" x 10'2"	230 sq. ft	No
11	Sidewalk	37'2" x 20'5"	156 sq. ft	No

Scan captured on Mon, 16 Sep 2024 16:55:53 GMT

Information is calculated by CubiCasa technology; deemed highly reliable but not guaranteed.

**819 Settlers Road, Lake Magdalene, Tampa,
Hillsborough County, Florida, United States,**

#	Room name	Dimensions	Area (sqft)	Counted as Living Area
12	Kitchen	10'8" x 9'1"	101 sq. ft	Yes
13	Primary Bedroom	13'5" x 21'4"	251 sq. ft	Yes
14	Bath	9'11" x 5'4"	53 sq. ft	Yes
15	Bedroom	11'11" x 11'5"	120 sq. ft	Yes
16	Bedroom	11'9" x 11'3"	114 sq. ft	Yes

819 Settlers Road, Lake Magdalene, Tampa, Hillsborough County, Florida, United States,

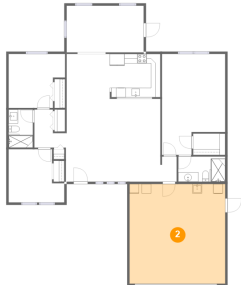
1 Floor 1 - W.i.c.



Dimensions: 6'9" x 4'6"
Area: 31 sq. ft
Counted as Living Area:
Yes

Heated: Yes
Finished: Yes
Enclosed: Yes
Contiguous:
Yes
Permitted: Yes
Wet Space: No
Addition: No
Conversion: No

2 Floor 1 - Garage

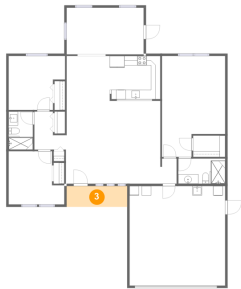


Dimensions: 20'3" x 21'1"
Area: 426 sq. ft
Counted as Living Area: No

Heated: No
Finished: No
Enclosed: Yes
Contiguous: Yes
Permitted: Yes
Wet Space: No
Addition: No
Conversion: No

819 Settlers Road, Lake Magdalene, Tampa, Hillsborough County, Florida, United States,

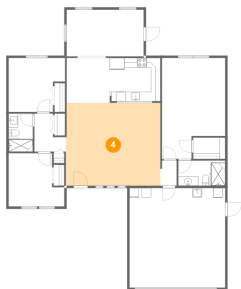
3 Floor 1 - Porch



Dimensions: 12'10" x 4'4"
Area: 56 sq. ft
Counted as Living Area: No

Heated: No
Finished: Yes
Enclosed: No
Contiguous: Yes
Permitted: Yes
Wet Space: No
Addition: No
Conversion: No

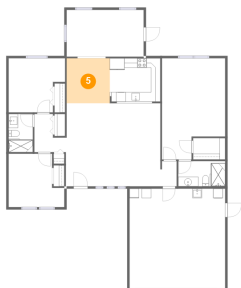
4 Floor 1 - Living Room



Dimensions: 20'0" x 17'6"
Area: 349 sq. ft
Counted as Living Area: Yes

Heated: Yes
Finished: Yes
Enclosed: Yes
Contiguous: Yes
Permitted: Yes
Wet Space: No
Addition: No
Conversion: No

5 Floor 1 - Dining Area

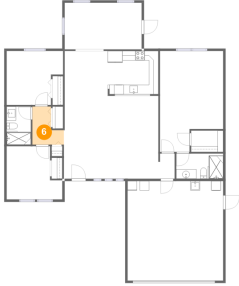


Dimensions: 9'2" x 9'6"
Area: 87 sq. ft
Counted as Living Area: Yes

Heated: Yes
Finished: Yes
Enclosed: Yes
Contiguous: Yes
Permitted: Yes
Wet Space: No
Addition: No
Conversion: No

819 Settlers Road, Lake Magdalene, Tampa, Hillsborough County, Florida, United States,

6 Floor 1 - Hall



Dimensions: 6'8" x 8'1"
Area: 40 sq. ft
Counted as Living Area:
Yes

Heated: Yes
Finished: Yes
Enclosed: Yes
Contiguous:
Yes
Permitted: Yes
Wet Space: No
Addition: No
Conversion: No

7 Floor 1 - Hall



Dimensions: 3'5" x 5'4"
Area: 18 sq. ft
Counted as Living Area:
Yes

Heated: Yes
Finished: Yes
Enclosed: Yes
Contiguous:
Yes
Permitted: Yes
Wet Space: No
Addition: No
Conversion: No

8 Floor 1 - Bath



Dimensions: 5'1" x 8'1"
Area: 41 sq. ft
Counted as Living Area:
Yes

Heated: Yes
Finished: Yes
Enclosed: Yes
Contiguous:
Yes
Permitted: Yes
Wet Space: Yes
Addition: No
Conversion: No

819 Settlers Road, Lake Magdalene, Tampa, Hillsborough County, Florida, United States,

9 Floor 1 - Office



Dimensions: 16'3" x 9'10"
Area: 161 sq. ft
Counted as Living Area: Yes

Heated: Yes
Finished: Yes
Enclosed: Yes
Contiguous: Yes
Permitted: Yes
Wet Space: No
Addition: No
Conversion: No

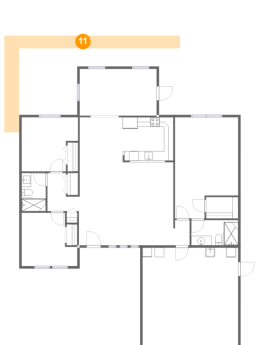
10 Floor 1 - Patio



Dimensions: 22'6" x 10'2"
Area: 230 sq. ft
Counted as Living Area: No

Heated: No
Finished: Yes
Enclosed: No
Contiguous: Yes
Permitted: Yes
Wet Space: No
Addition: No
Conversion: No

11 Floor 1 - Sidewalk

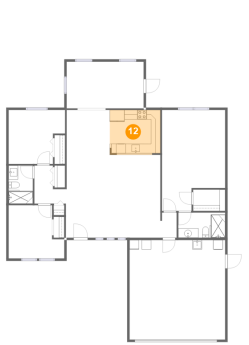


Dimensions: 37'2" x 20'5"
Area: 156 sq. ft
Counted as Living Area: No

Heated: No
Finished: Yes
Enclosed: No
Contiguous: Yes
Permitted: Yes
Wet Space: No
Addition: No
Conversion: No

819 Settlers Road, Lake Magdalene, Tampa, Hillsborough County, Florida, United States,

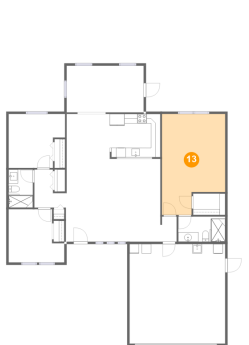
12 Floor 1 - Kitchen



Dimensions: 10'8" x 9'1"
Area: 101 sq. ft
Counted as Living Area:
Yes

Heated: Yes
Finished: Yes
Enclosed: Yes
Contiguous:
Yes
Permitted: Yes
Wet Space: No
Addition: No
Conversion: No

13 Floor 1 - Primary Bedroom



Dimensions: 13'5" x 21'4"
Area: 251 sq. ft
Counted as Living Area:
Yes

Heated: Yes
Finished: Yes
Enclosed: Yes
Contiguous:
Yes
Permitted: Yes
Wet Space: No
Addition: No
Conversion: No

14 Floor 1 - Bath



Dimensions: 9'11" x 5'4"
Area: 53 sq. ft
Counted as Living Area:
Yes

Heated: Yes
Finished: Yes
Enclosed: Yes
Contiguous:
Yes
Permitted: Yes
Wet Space: Yes
Addition: No
Conversion: No

819 Settlers Road, Lake Magdalene, Tampa, Hillsborough County, Florida, United States,

15 Floor 1 - Bedroom



Dimensions: 11'11" x 11'5"
Area: 120 sq. ft
Counted as Living Area:
Yes

Heated: Yes
Finished: Yes
Enclosed: Yes
Contiguous:
Yes
Permitted: Yes
Wet Space: No
Addition: No
Conversion: No

16 Floor 1 - Bedroom



Dimensions: 11'9" x 11'3"
Area: 114 sq. ft
Counted as Living Area:
Yes

Heated: Yes
Finished: Yes
Enclosed: Yes
Contiguous:
Yes
Permitted: Yes
Wet Space: No
Addition: No
Conversion: No