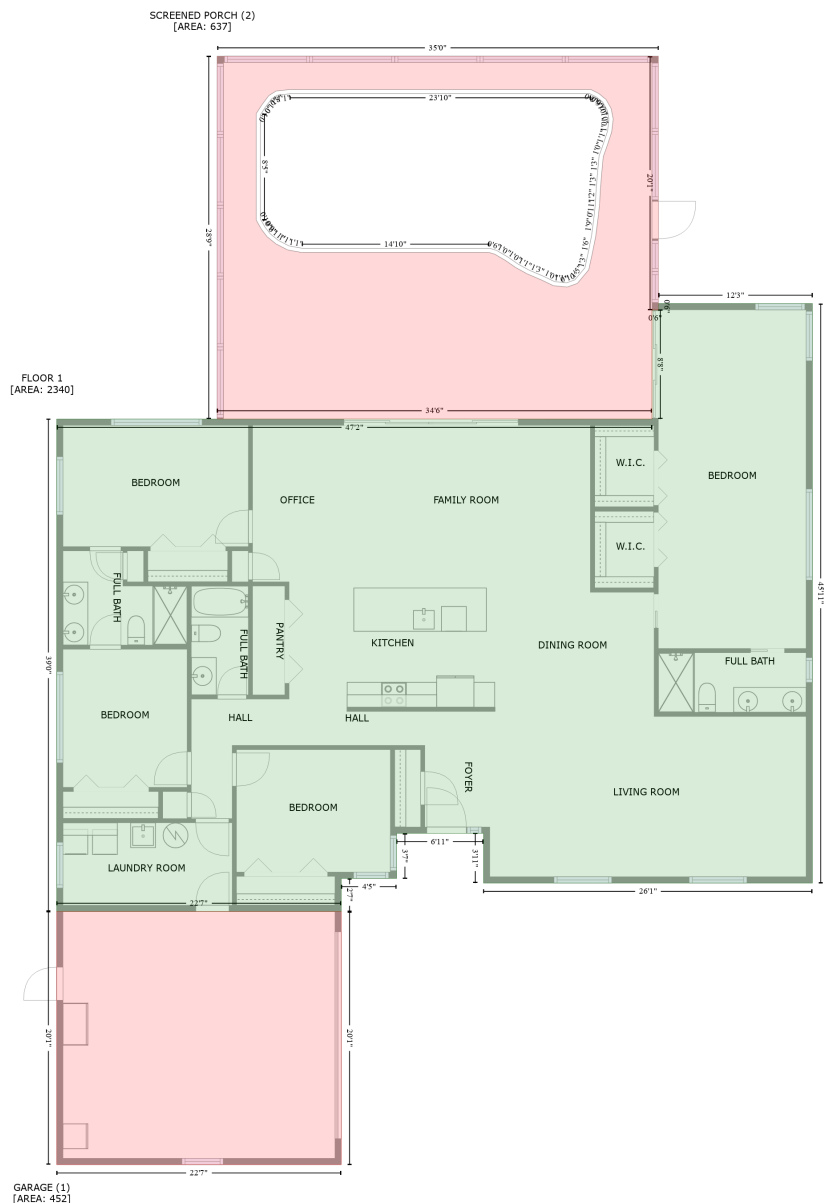


# 1840 Palmcrest Lane, Allen Creek, Clearwater, Pinellas County, Florida, United States, 33764

Gross Living Area: 2340 sq. ft



Space	Area (sq. ft)	Calculation
FLOOR 1 (Living area)	2340	Coordinate Polygon Area Algorithm using inches $-((715.4 + 715.4) * (308.2 - 859.2) + (715.4 + 402.7) * (859.2 - 859.2) + (402.7 + 402.7) * (859.2 - 811.9) + (402.7 + 320.1) * (811.9 - 811.9) + (320.1 + 320.1) * (811.9 - 854.8) + (320.1 + 267.4) * (854.8 - 854.8) + (267.4 + 267.4) * (854.8 - 886.2) + (267.4 + -3.2) * (886.2 - 886.2) + (-3.2 + -3.2) * (886.2 - 418) + (-3.2 + 562.9) * (418 - 418) + (562.9 + 562.9) * (418 - 314.2) + (562.9 + 568.9) * (314.2 - 314.2) + (568.9 + 568.9) * (314.2 - 308.2) + (568.9 + 715.4) * (308.2 - 308.2)) * 0.5 * 0.00694$

# 1840 Palmcrest Lane, Allen Creek, Clearwater, Pinellas County, Florida, United States, 33764

Gross Living Area: 2340 sq. ft

Space	Area (sq. ft)	Calculation <small>Coordinate Polygon Area Algorithm using inches</small>
GARAGE (Non-living area)	452	$-\left((267.4 + 267.4) * (886.2 - 1126.9) + (267.4 + -3.2) * (1126.9 - 1126.9) + (-3.2 + -3.2) * (1126.9 - 886.2) + (-3.2 + 267.4) * (886.2 - 886.2)\right) * 0.5 * 0.00694$
SCREENED PORCH (Non-living area)	637	$-\left((568.9 + 568.9) * (73 - 314.2) + (568.9 + 562.9) * (314.2 - 314.2) + (562.9 + 562.9) * (314.2 - 418) + (562.9 + 149.3) * (418 - 418) + (149.3 + 149.3) * (418 - 73) + (149.3 + 568.9) * (73 - 73)\right) * 0.5 * 0.00694 + \left((504.8 + 218.6) * (104.8 - 104.8) + (218.6 + 205.4) * (104.8 - 106.2) + (205.4 + 198.5) * (106.2 - 110.5) + (198.5 + 191.9) * (110.5 - 119.3) + (191.9 + 186.5) * (119.3 - 127.7) + (186.5 + 186.5) * (127.7 - 228.8) + (186.5 + 191.5) * (228.8 - 237.7) + (191.5 + 196.9) * (237.7 - 244.7) + (196.9 + 205.3) * (244.7 - 251.5) + (205.3 + 216.4) * (251.5 - 257.3) + (216.4 + 229.7) * (257.3 - 259.6) + (229.7 + 407.8) * (259.6 - 259.6) + (407.8 + 413.4) * (259.6 - 261.3) + (413.4 + 423.5) * (261.3 - 267.3) + (423.5 + 433.1) * (267.3 - 273.9) + (433.1 + 444.1) * (273.9 - 280) + (444.1 + 458.3) * (280 - 286.1) + (458.3 + 469.1) * (286.1 - 291.3) + (469.1 + 482.3) * (291.3 - 292.5) + (482.3 + 491.9) * (292.5 - 289.1) + (491.9 + 502.7) * (289.1 - 276.2) + (502.7 + 505.9) * (276.2 - 261.8) + (505.9 + 509.4) * (261.8 - 244.4) + (509.4 + 512) * (244.4 - 223.8) + (512 + 513.1) * (223.8 - 212.9) + (513.1 + 513.8) * (212.9 - 199.1) + (513.8 + 515.1) * (199.1 - 183.7) + (515.1 + 516.5) * (183.7 - 168.7) + (516.5 + 520.4) * (168.7 - 157.7) + (520.4 + 524.6) * (157.7 - 145) + (524.6 + 526) * (145 - 132.8) + (526 + 524.1) * (132.8 - 123) + (524.1 + 519.2) * (123 - 114.2) + (519.2 + 512.2) * (114.2 - 108.5) + (512.2 + 504.8) * (108.5 - 104.8)\right) * 0.5 * 0.00694$