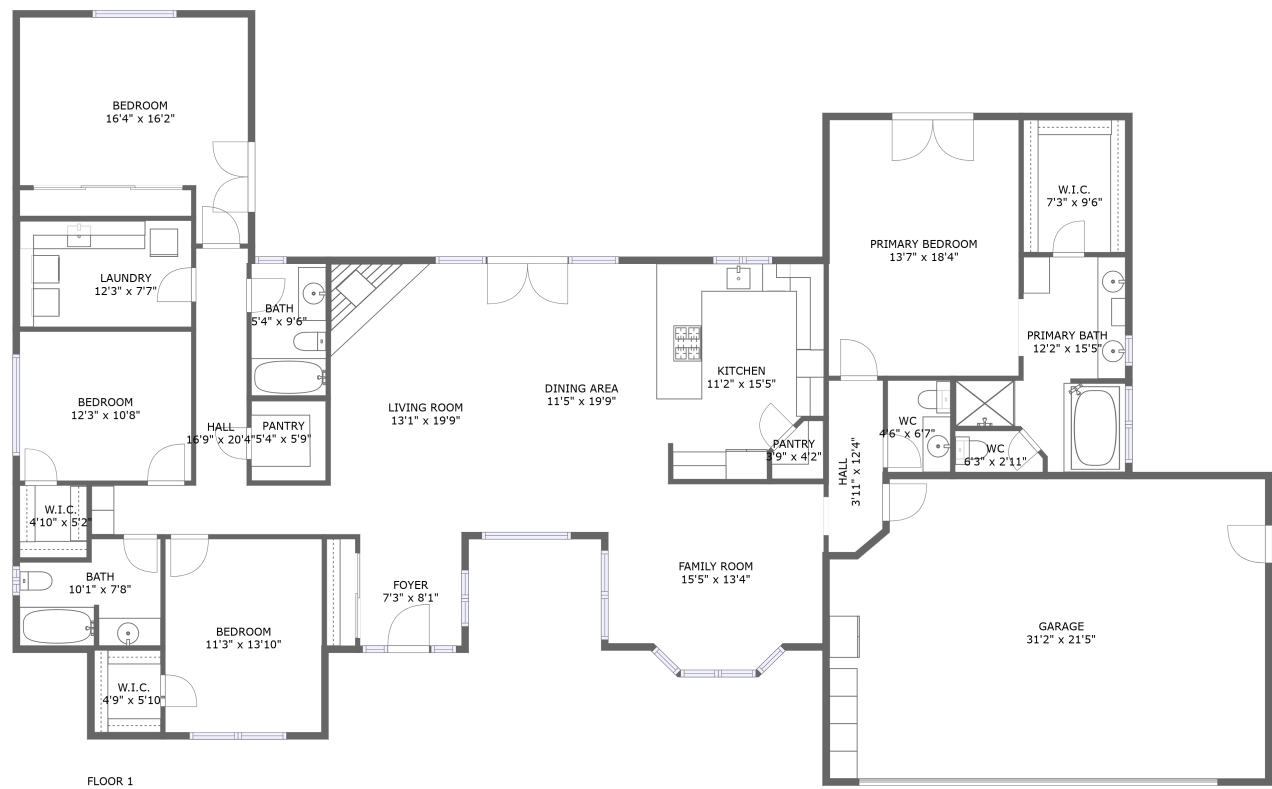


Home report

5570 Rancho La Loma Linda Drive, Paso Robles, San Luis Obispo County, California, United States, 93446, Main Home




Total Area: 2604 sq. ft


Floor 1: 2604 sq. ft

Excluded: Garage 683 sq. ft

Property summary

 1 Floors

 4 Bedrooms

 3 Bathrooms

Home report

**5570 Rancho La Loma Linda Drive, Paso Robles, San Luis  
Obispo County, California, United States, 93446, Main Home**



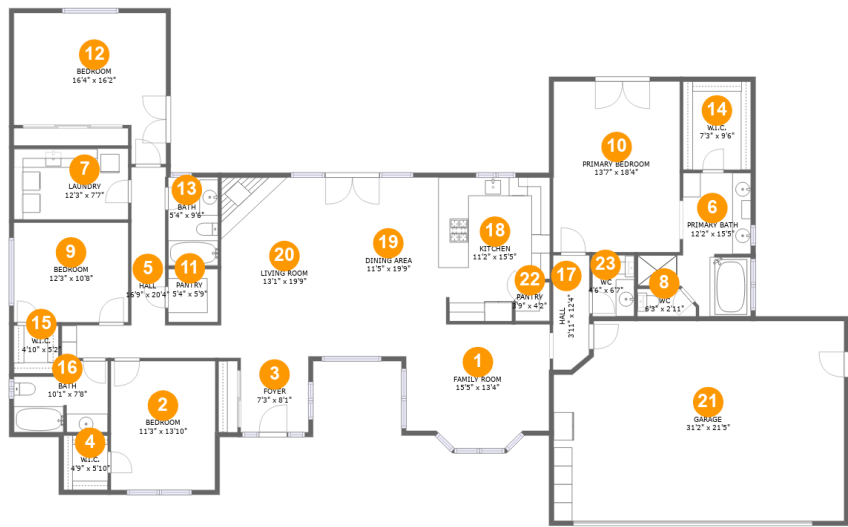
**1**  
Half baths



**1**  
Garages

Home report

5570 Rancho La Loma Linda Drive, Paso Robles, San Luis Obispo County, California, United States, 93446, Main Home



Room dimensions

Floor 1 Total:2604sqft Excluded: 683sqft

#		Max Dimensions	sqft	Included
1	Family Room	15'5" x 13'4"	190 sq. ft	Yes
2	Bedroom	11'3" x 13'10"	155 sq. ft	Yes
3	Foyer	7'3" x 8'1"	59 sq. ft	Yes
4	W.I.C.	4'9" x 5'10"	28 sq. ft	Yes
5	Hall	16'9" x 20'4"	118 sq. ft	Yes
6	Primary Bath	12'2" x 15'5"	124 sq. ft	Yes
7	Laundry	12'3" x 7'7"	93 sq. ft	Yes
8	WC	6'3" x 2'11"	17 sq. ft	Yes
9	Bedroom	12'3" x 10'8"	131 sq. ft	Yes
10	Primary Bedroom	13'7" x 18'4"	249 sq. ft	Yes
11	Pantry	5'4" x 5'9"	31 sq. ft	Yes

## Home report

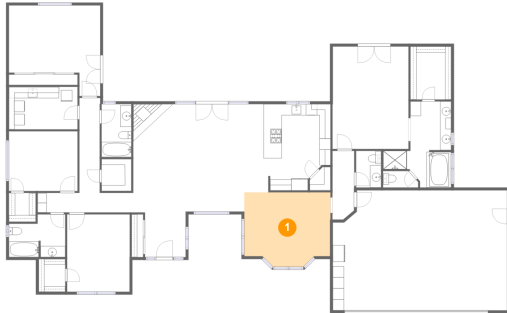
**5570 Rancho La Loma Linda Drive, Paso Robles, San Luis Obispo County, California, United States, 93446, Main Home**

#		Max Dimensions	sqft	Included
12	Bedroom	16'4" x 16'2"	212 sq. ft	Yes
13	Bath	5'4" x 9'6"	51 sq. ft	Yes
14	W.I.C.	7'3" x 9'6"	69 sq. ft	Yes
15	W.I.C.	4'10" x 5'2"	25 sq. ft	Yes
16	Bath	10'1" x 7'8"	68 sq. ft	Yes
17	Hall	3'11" x 12'4"	46 sq. ft	Yes
18	Kitchen	11'2" x 15'5"	156 sq. ft	Yes
19	Dining Area	11'5" x 19'9"	208 sq. ft	Yes
20	Living Room	13'1" x 19'9"	246 sq. ft	Yes
21	Garage	31'2" x 21'5"	647 sq. ft	No
22	Pantry	3'9" x 4'2"	13 sq. ft	Yes
23	WC	4'6" x 6'7"	29 sq. ft	Yes

**5570 Rancho La Loma Linda Drive, Paso Robles, San Luis  
Obispo County, California, United States, 93446, Main Home**

## **1 Floor 1 - Family Room**

---

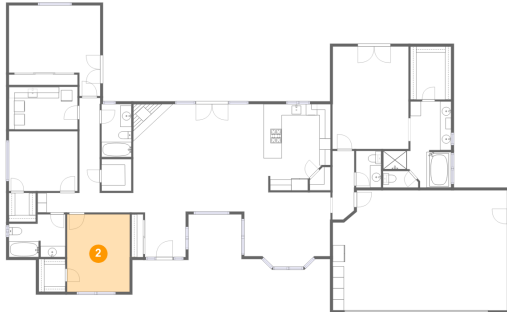


**Max Dimensions:** 15'5" x 13'4"  
**Calculated Area:** 190 sq. ft  
**Included:** Yes

**Heated:** Yes  
**Finished:** Yes  
**Enclosed:** Yes  
**Contiguous:** Yes  
**Permitted:** Yes  
**Wet space:** No  
**Addition:** No  
**Conversion:** No

## **2 Floor 1 - Bedroom**

---

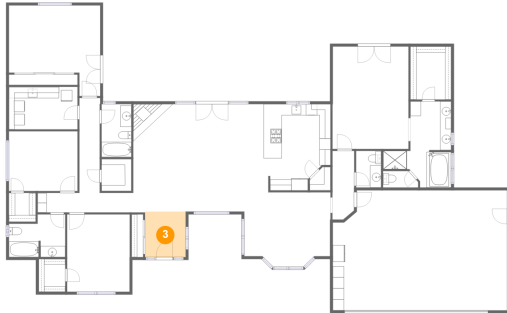


**Max Dimensions:** 11'3" x 13'10"  
**Calculated Area:** 155 sq. ft  
**Included:** Yes

**Heated:** Yes  
**Finished:** Yes  
**Enclosed:** Yes  
**Contiguous:** Yes  
**Permitted:** Yes  
**Wet space:** No  
**Addition:** No  
**Conversion:** No

5570 Rancho La Loma Linda Drive, Paso Robles, San Luis  
Obispo County, California, United States, 93446, Main Home

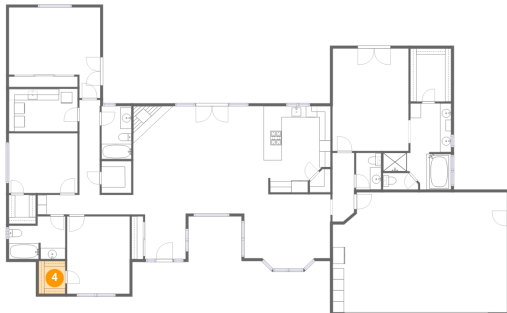
**3 Floor 1 - Foyer**



Max Dimensions: 7'3" x 8'1"  
Calculated Area: 59 sq. ft  
Included: Yes

Heated: Yes  
Finished: Yes  
Enclosed: Yes  
Contiguous: Yes  
Permitted: Yes  
Wet space: No  
Addition: No  
Conversion: No

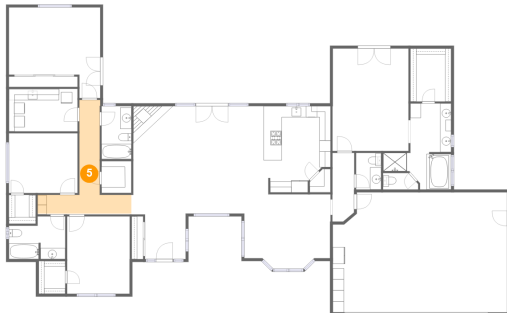
**4 Floor 1 - W.I.C.**



Max Dimensions: 4'9" x 5'10"  
Calculated Area: 28 sq. ft  
Included: Yes

Heated: Yes  
Finished: Yes  
Enclosed: Yes  
Contiguous: Yes  
Permitted: Yes  
Wet space: No  
Addition: No  
Conversion: No

**5 Floor 1 - Hall**

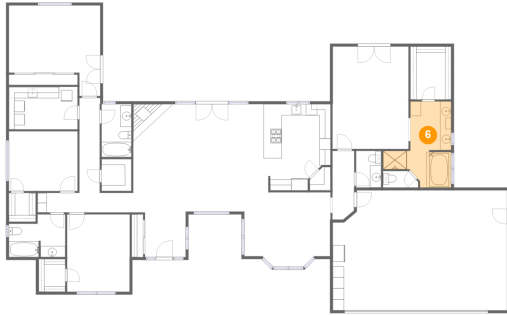


Max Dimensions: 16'9" x 20'4"  
Calculated Area: 118 sq. ft  
Included: Yes

Heated: Yes  
Finished: Yes  
Enclosed: Yes  
Contiguous: Yes  
Permitted: Yes  
Wet space: No  
Addition: No  
Conversion: No

5570 Rancho La Loma Linda Drive, Paso Robles, San Luis  
Obispo County, California, United States, 93446, Main Home

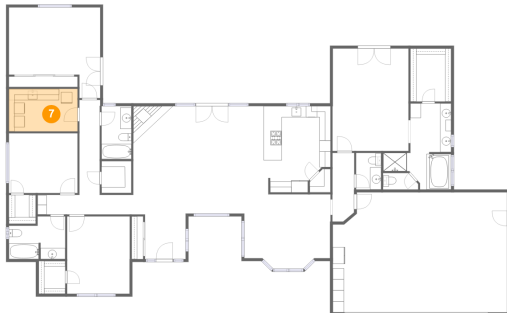
## 6 Floor 1 - Primary Bath



Max Dimensions: 12'2" x 15'5"  
Calculated Area: 124 sq. ft  
Included: Yes

Heated: Yes  
Finished: Yes  
Enclosed: Yes  
Contiguous: Yes  
Permitted: Yes  
Wet space: Yes  
Addition: No  
Conversion: No

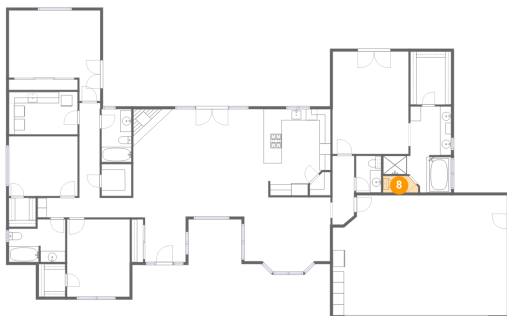
## 7 Floor 1 - Laundry



Max Dimensions: 12'3" x 7'7"  
Calculated Area: 93 sq. ft  
Included: Yes

Heated: Yes  
Finished: Yes  
Enclosed: Yes  
Contiguous: Yes  
Permitted: Yes  
Wet space: No  
Addition: No  
Conversion: No

## 8 Floor 1 - WC

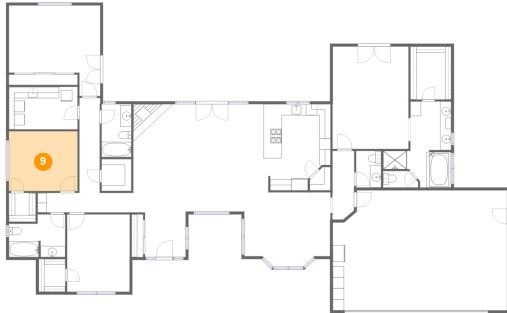


Max Dimensions: 6'3" x 2'11"  
Calculated Area: 17 sq. ft  
Included: Yes

Heated: Yes  
Finished: Yes  
Enclosed: Yes  
Contiguous: Yes  
Permitted: Yes  
Wet space: Yes  
Addition: No  
Conversion: No

**5570 Rancho La Loma Linda Drive, Paso Robles, San Luis  
Obispo County, California, United States, 93446, Main Home**

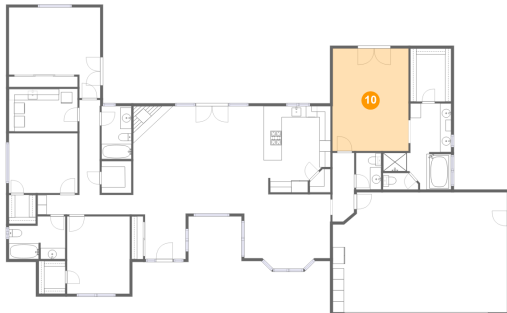
**9 Floor 1 - Bedroom**



Max Dimensions: 12'3" x 10'8"  
Calculated Area: 131 sq. ft  
Included: Yes

Heated: Yes  
Finished: Yes  
Enclosed: Yes  
Contiguous: Yes  
Permitted: Yes  
Wet space: No  
Addition: No  
Conversion: No

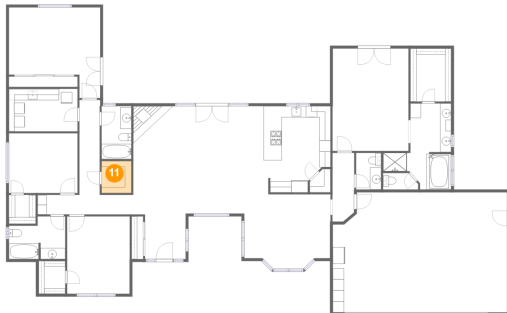
**10 Floor 1 - Primary Bedroom**



Max Dimensions: 13'7" x 18'4"  
Calculated Area: 249 sq. ft  
Included: Yes

Heated: Yes  
Finished: Yes  
Enclosed: Yes  
Contiguous: Yes  
Permitted: Yes  
Wet space: No  
Addition: No  
Conversion: No

**11 Floor 1 - Pantry**



Max Dimensions: 5'4" x 5'9"  
Calculated Area: 31 sq. ft  
Included: Yes

Heated: Yes  
Finished: Yes  
Enclosed: Yes  
Contiguous: Yes  
Permitted: Yes  
Wet space: No  
Addition: No  
Conversion: No



## Home report

5570 Rancho La Loma Linda Drive, Paso Robles, San Luis  
Obispo County, California, United States, 93446, Main Home

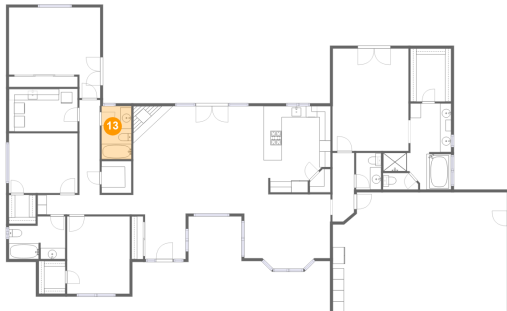
### 12 Floor 1 - Bedroom



Max Dimensions: 16'4" x 16'2"  
Calculated Area: 212 sq. ft  
Included: Yes

Heated: Yes  
Finished: Yes  
Enclosed: Yes  
Contiguous: Yes  
Permitted: Yes  
Wet space: No  
Addition: No  
Conversion: No

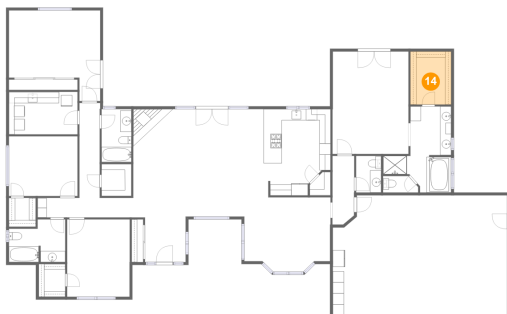
### 13 Floor 1 - Bath



Max Dimensions: 5'4" x 9'6"  
Calculated Area: 51 sq. ft  
Included: Yes

Heated: Yes  
Finished: Yes  
Enclosed: Yes  
Contiguous: Yes  
Permitted: Yes  
Wet space: Yes  
Addition: No  
Conversion: No

### 14 Floor 1 - W.I.C.

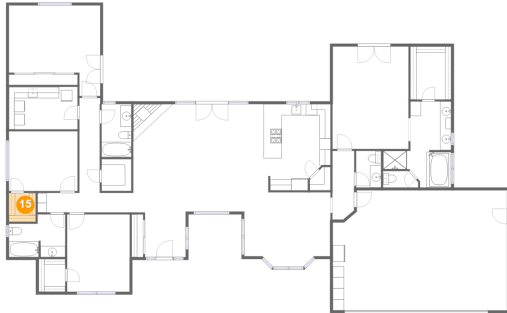


Max Dimensions: 7'3" x 9'6"  
Calculated Area: 69 sq. ft  
Included: Yes

Heated: Yes  
Finished: Yes  
Enclosed: Yes  
Contiguous: Yes  
Permitted: Yes  
Wet space: No  
Addition: No  
Conversion: No

5570 Rancho La Loma Linda Drive, Paso Robles, San Luis  
Obispo County, California, United States, 93446, Main Home

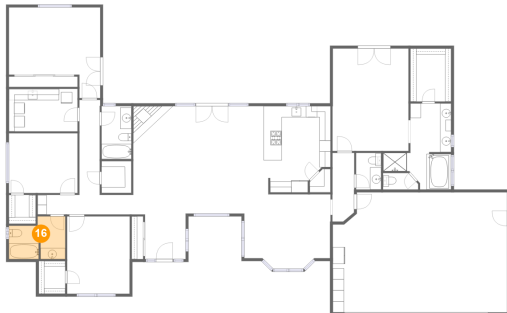
**15** Floor 1 - W.I.C.



Max Dimensions: 4'10" x 5'2"  
Calculated Area: 25 sq. ft  
Included: Yes

Heated: Yes  
Finished: Yes  
Enclosed: Yes  
Contiguous: Yes  
Permitted: Yes  
Wet space: No  
Addition: No  
Conversion: No

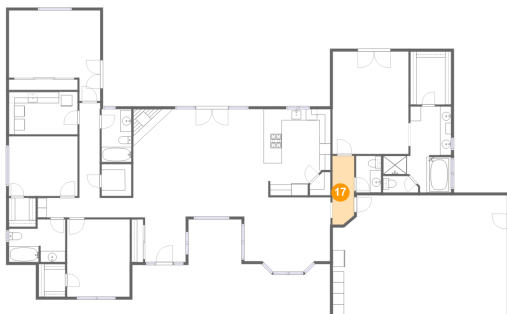
**16** Floor 1 - Bath



Max Dimensions: 10'1" x 7'8"  
Calculated Area: 68 sq. ft  
Included: Yes

Heated: Yes  
Finished: Yes  
Enclosed: Yes  
Contiguous: Yes  
Permitted: Yes  
Wet space: Yes  
Addition: No  
Conversion: No

**17** Floor 1 - Hall

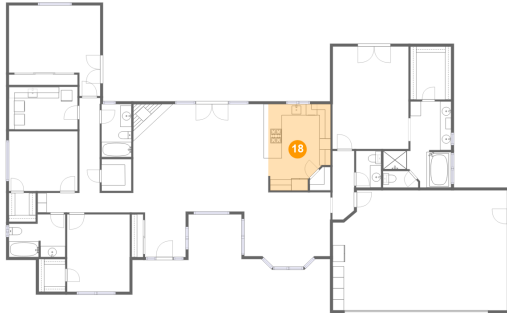


Max Dimensions: 3'11" x 12'4"  
Calculated Area: 46 sq. ft  
Included: Yes

Heated: Yes  
Finished: Yes  
Enclosed: Yes  
Contiguous: Yes  
Permitted: Yes  
Wet space: No  
Addition: No  
Conversion: No

5570 Rancho La Loma Linda Drive, Paso Robles, San Luis  
Obispo County, California, United States, 93446, Main Home

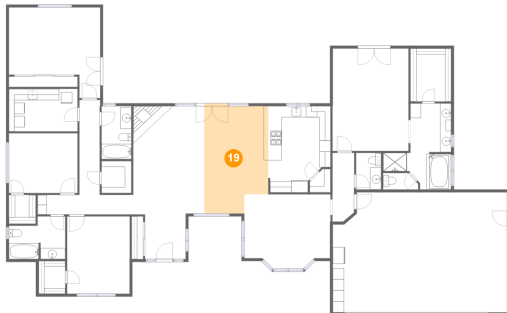
**18** Floor 1 - Kitchen



Max Dimensions: 11'2" x 15'5"  
Calculated Area: 156 sq. ft  
Included: Yes

Heated: Yes  
Finished: Yes  
Enclosed: Yes  
Contiguous: Yes  
Permitted: Yes  
Wet space: No  
Addition: No  
Conversion: No

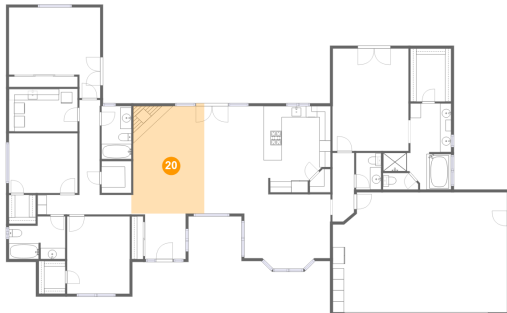
**19** Floor 1 - Dining Area



Max Dimensions: 11'5" x 19'9"  
Calculated Area: 208 sq. ft  
Included: Yes

Heated: Yes  
Finished: Yes  
Enclosed: Yes  
Contiguous: Yes  
Permitted: Yes  
Wet space: No  
Addition: No  
Conversion: No

**20** Floor 1 - Living Room

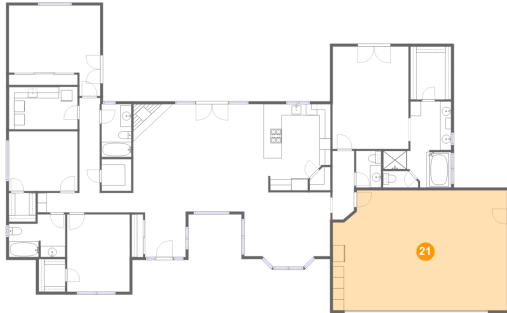


Max Dimensions: 13'1" x 19'9"  
Calculated Area: 246 sq. ft  
Included: Yes

Heated: Yes  
Finished: Yes  
Enclosed: Yes  
Contiguous: Yes  
Permitted: Yes  
Wet space: No  
Addition: No  
Conversion: No

5570 Rancho La Loma Linda Drive, Paso Robles, San Luis  
Obispo County, California, United States, 93446, Main Home

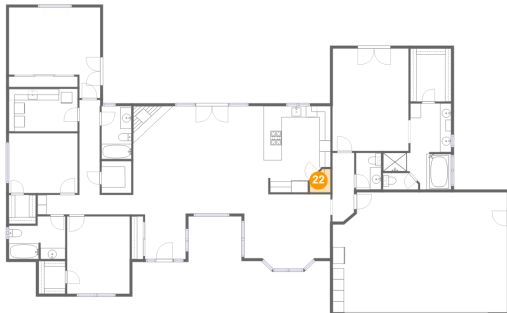
**21** Floor 1 - Garage



Max Dimensions: 31'2" x 21'5"  
Calculated Area: 647 sq. ft  
Included: No

Heated: No  
Finished: No  
Enclosed: Yes  
Contiguous: Yes  
Permitted: Yes  
Wet space: No  
Addition: No  
Conversion: No

**22** Floor 1 - Pantry



Max Dimensions: 3'9" x 4'2"  
Calculated Area: 13 sq. ft  
Included: Yes

Heated: Yes  
Finished: Yes  
Enclosed: Yes  
Contiguous: Yes  
Permitted: Yes  
Wet space: No  
Addition: No  
Conversion: No

**23** Floor 1 - WC



Max Dimensions: 4'6" x 6'7"  
Calculated Area: 29 sq. ft  
Included: Yes

Heated: Yes  
Finished: Yes  
Enclosed: Yes  
Contiguous: Yes  
Permitted: Yes  
Wet space: Yes  
Addition: No  
Conversion: No