

Home report

1147 Mulder Avenue, Orléans Avalon - Notting Gate -
Fallingbrook - Gardenway South, Orléans, Ontario, Canada, K4A



Total Area: 1481 sq. ft

Below Ground: 160 sq. ft, Floor 2: 1321 sq. ft

Excluded: Basement 997 sq. ft, Storage 93 sq. ft, Fireplace 7 sq. ft, Walls: 164 sq. ft

Property summary

2 Floors

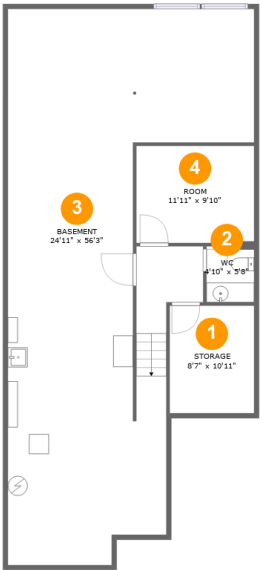
2 Bedrooms

1 Bathrooms

1 Half baths

Home report

1147 Mulder Avenue, Orléans Avalon - Notting Gate -
Fallingbrook - Gardenway South, Orléans, Ontario, Canada, K4A



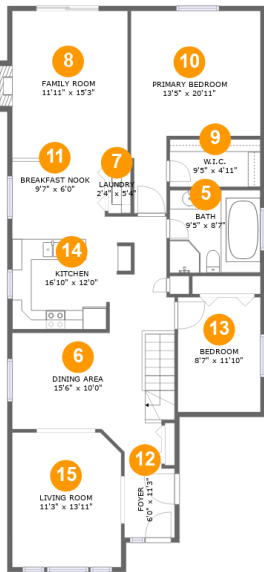
Room dimensions

Floor 1 Below ground Total:160sqft Excluded: 1090sqft

#		Max Dimensions	sqft	Included
1	Storage	8'7" x 10'11"	93 sq. ft	No
2	WC	4'10" x 5'8"	27 sq. ft	Yes
3	Basement	24'11" x 56'3"	986 sq. ft	No
4	Room	11'11" x 9'10"	117 sq. ft	Yes

Home report

1147 Mulder Avenue, Orléans Avalon - Notting Gate -
Fallingbrook - Gardenway South, Orléans, Ontario, Canada, K4A



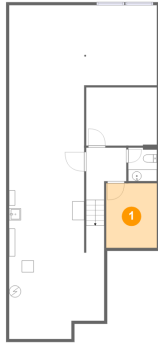
Room dimensions

Floor 2 Total:1321sqft Excluded: 7sqft

#		Max Dimensions	sqft	Included
5	Bath	9'5" x 8'7"	80 sq. ft	Yes
6	Dining Area	15'6" x 10'0"	166 sq. ft	Yes
7	Laundry	2'4" x 5'4"	13 sq. ft	Yes
8	Family Room	11'11" x 15'3"	188 sq. ft	Yes
9	W.I.C.	9'5" x 4'11"	46 sq. ft	Yes
10	Primary Bedroom	13'5" x 20'11"	201 sq. ft	Yes
11	Breakfast Nook	9'7" x 6'0"	58 sq. ft	Yes
12	Foyer	6'0" x 11'3"	56 sq. ft	Yes
13	Bedroom	8'7" x 11'10"	102 sq. ft	Yes
14	Kitchen	16'10" x 12'0"	191 sq. ft	Yes
15	Living Room	11'3" x 13'11"	155 sq. ft	Yes

**1147 Mulder Avenue, Orléans Avalon - Notting Gate -
Fallingbrook - Gardenway South, Orléans, Ontario, Canada, K4A**

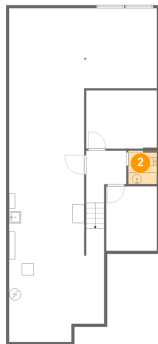
1 Floor 1 - Storage



Max Dimensions: 8'7" x 10'11"
Calculated Area: 93 sq. ft
Included: No

Heated: No
Finished: No
Enclosed: No
Contiguous: Yes
Permitted: Yes
Wet space: No
Addition: No
Conversion: No

2 Floor 1 - WC



Max Dimensions: 4'10" x 5'8"
Calculated Area: 27 sq. ft
Included: No

Heated: Yes
Finished: Yes
Enclosed: Yes
Contiguous: No
Permitted: Yes
Wet space: Yes
Addition: No
Conversion: No

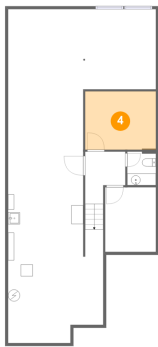
3 Floor 1 - Basement



Max Dimensions: 24'11" x 56'3"
Calculated Area: 986 sq. ft
Included: No

Heated: Yes
Finished: No
Enclosed: Yes
Contiguous: Yes
Permitted: Yes
Wet space: No
Addition: No
Conversion: No

4 Floor 1 - Room



Max Dimensions: 11'11" x 9'10"
Calculated Area: 117 sq. ft
Included: No

Heated: Yes
Finished: Yes
Enclosed: Yes
Contiguous: No
Permitted: Yes
Wet space: No
Addition: No
Conversion: No

5 Floor 2 - Bath



Max Dimensions: 9'5" x 8'7"
Calculated Area: 80 sq. ft
Included: Yes

Heated: Yes
Finished: Yes
Enclosed: Yes
Contiguous: Yes
Permitted: Yes
Wet space: Yes
Addition: No
Conversion: No

1147 Mulder Avenue, Orléans Avalon - Notting Gate -
Fallingbrook - Gardenway South, Orléans, Ontario, Canada, K4A

6 Floor 2 - Dining Area



Max Dimensions: 15'6" x 10'0"
Calculated Area: 166 sq. ft
Included: Yes

Heated: Yes
Finished: Yes
Enclosed: Yes
Contiguous: Yes
Permitted: Yes
Wet space: No
Addition: No
Conversion: No

7 Floor 2 - Laundry



Max Dimensions: 2'4" x 5'4"
Calculated Area: 13 sq. ft
Included: Yes

Heated: Yes
Finished: Yes
Enclosed: Yes
Contiguous: Yes
Permitted: Yes
Wet space: No
Addition: No
Conversion: No

8 Floor 2 - Family Room



Max Dimensions: 11'11" x 15'3"
Calculated Area: 188 sq. ft
Included: Yes

Heated: Yes
Finished: Yes
Enclosed: Yes
Contiguous: Yes
Permitted: Yes
Wet space: No
Addition: No
Conversion: No

Home report

1147 Mulder Avenue, Orléans Avalon - Notting Gate -
Fallingbrook - Gardenway South, Orléans, Ontario, Canada, K4A

9 Floor 2 - W.I.C.



Max Dimensions: 9'5" x 4'11"
Calculated Area: 46 sq. ft
Included: Yes

Heated: Yes
Finished: Yes
Enclosed: Yes
Contiguous: Yes
Permitted: Yes
Wet space: No
Addition: No
Conversion: No

10 Floor 2 - Primary Bedroom



Max Dimensions: 13'5" x 20'11"
Calculated Area: 201 sq. ft
Included: Yes

Heated: Yes
Finished: Yes
Enclosed: Yes
Contiguous: Yes
Permitted: Yes
Wet space: No
Addition: No
Conversion: No

11 Floor 2 - Breakfast Nook



Max Dimensions: 9'7" x 6'0"
Calculated Area: 58 sq. ft
Included: Yes

Heated: Yes
Finished: Yes
Enclosed: Yes
Contiguous: Yes
Permitted: Yes
Wet space: No
Addition: No
Conversion: No

1147 Mulder Avenue, Orléans Avalon - Notting Gate -
Fallingbrook - Gardenway South, Orléans, Ontario, Canada, K4A

12 Floor 2 - Foyer



Max Dimensions: 6'0" x 11'3"
Calculated Area: 56 sq. ft
Included: Yes

Heated: Yes
Finished: Yes
Enclosed: Yes
Contiguous: Yes
Permitted: Yes
Wet space: No
Addition: No
Conversion: No

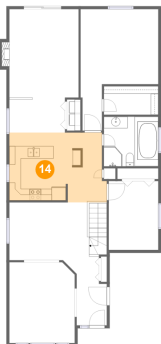
13 Floor 2 - Bedroom



Max Dimensions: 8'7" x 11'10"
Calculated Area: 102 sq. ft
Included: Yes

Heated: Yes
Finished: Yes
Enclosed: Yes
Contiguous: Yes
Permitted: Yes
Wet space: No
Addition: No
Conversion: No

14 Floor 2 - Kitchen



Max Dimensions: 16'10" x 12'0"
Calculated Area: 191 sq. ft
Included: Yes

Heated: Yes
Finished: Yes
Enclosed: Yes
Contiguous: Yes
Permitted: Yes
Wet space: No
Addition: No
Conversion: No

1147 Mulder Avenue, Orléans Avalon - Notting Gate -
Fallingbrook - Gardenway South, Orléans, Ontario, Canada, K4A

15 Floor 2 - Living Room



Max Dimensions: 11'3" x 13'11"
Calculated Area: 155 sq. ft
Included: Yes

Heated: Yes
Finished: Yes
Enclosed: Yes
Contiguous: Yes
Permitted: Yes
Wet space: No
Addition: No
Conversion: No