

# 5896 Whistlewood Way, Central Sarasota, Sarasota Springs, Sarasota, Sarasota County,




## Property Summary

 **1** garages

 **4** bedrooms

 **2** bathrooms

 **0** half baths

 **1** floors

 **1,753**  
Gross Living  
Area sqft

 **3,549**  
total sqft

# 5896 Whistlewood Way, Central Sarasota, Sarasota Springs, Sarasota, Sarasota County,



## Room Dimensions

Floor 1

Total sqft: 3549

Living area: 1753

#	Room name	Dimensions	Area (sqft)	Counted as Living Area
1	W.i.c.	5'0" x 5'3"	26 sq. ft	Yes
2	Kitchen	19'9" x 16'1"	315 sq. ft	Yes
3	Swimming Pool	12'11" x 26'4"	293 sq. ft	No
4	Hall	11'9" x 20'7"	98 sq. ft	Yes
5	Garage	21'10" x 21'7"	444 sq. ft	No
6	Patio	27'7" x 59'1"	1614 sq. ft	No
7	Bath	5'6" x 5'1"	28 sq. ft	Yes
8	Primary Bedroom	10'10" x 13'7"	148 sq. ft	Yes
9	Bath	5'6" x 5'3"	29 sq. ft	Yes
10	Bedroom	10'11" x 10'1"	111 sq. ft	Yes
11	Bedroom	9'11" x 10'0"	99 sq. ft	Yes

Scan captured on Thu, 11 Jul 2024 02:17:34 GMT

Information is calculated by CubiCasa technology; deemed highly reliable but not guaranteed.

**5896 Whistlewood Way, Central Sarasota,  
Sarasota Springs, Sarasota, Sarasota County,**

#	Room name	Dimensions	Area (sqft)	Counted as Living Area
12	Bath	5'0" x 7'5"	37 sq. ft	Yes
13	Sunroom	19'9" x 14'0"	276 sq. ft	Yes
14	Bedroom	9'11" x 9'7"	95 sq. ft	Yes
15	Living Room	22'9" x 13'4"	277 sq. ft	Yes

# 5896 Whistlewood Way, Central Sarasota, Sarasota Springs, Sarasota, Sarasota County,

## 1 Floor 1 - W.i.c.

---

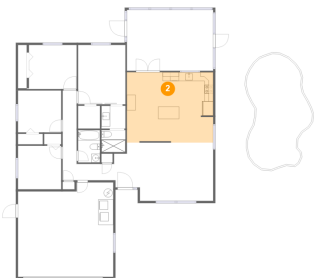


Dimensions: 5'0" x 5'3"  
Area: 26 sq. ft  
Counted as Living Area:  
Yes

Heated: Yes  
Finished: Yes  
Enclosed: Yes  
Contiguous:  
Yes  
Permitted: Yes  
Wet Space: No  
Addition: No  
Conversion: No

## 2 Floor 1 - Kitchen

---



Dimensions: 19'9" x 16'1"  
Area: 315 sq. ft  
Counted as Living Area:  
Yes

Heated: Yes  
Finished: Yes  
Enclosed: Yes  
Contiguous:  
Yes  
Permitted: Yes  
Wet Space: No  
Addition: No  
Conversion: No

# 5896 Whistlewood Way, Central Sarasota, Sarasota Springs, Sarasota, Sarasota County,

## 3 Floor 1 - Swimming Pool



Dimensions: 12'11" x 26'4"  
Area: 293 sq. ft  
Counted as Living Area: No

Heated: No  
Finished: No  
Enclosed: No  
Contiguous: Yes  
Permitted: No  
Wet Space: No  
Addition: No  
Conversion: No

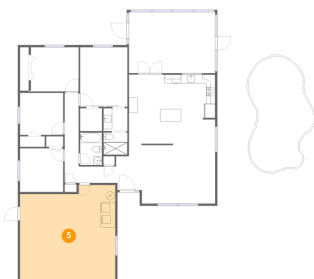
## 4 Floor 1 - Hall



Dimensions: 11'9" x 20'7"  
Area: 98 sq. ft  
Counted as Living Area:  
Yes

Heated: Yes  
Finished: Yes  
Enclosed: Yes  
Contiguous:  
Yes  
Permitted: Yes  
Wet Space: No  
Addition: No  
Conversion: No

## 5 Floor 1 - Garage

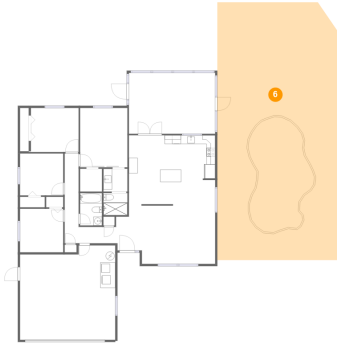


Dimensions: 21'10" x 21'7"  
Area: 444 sq. ft  
Counted as Living Area: No

Heated: No  
Finished: No  
Enclosed: Yes  
Contiguous: Yes  
Permitted: Yes  
Wet Space: No  
Addition: No  
Conversion: No

# 5896 Whistlewood Way, Central Sarasota, Sarasota Springs, Sarasota, Sarasota County,

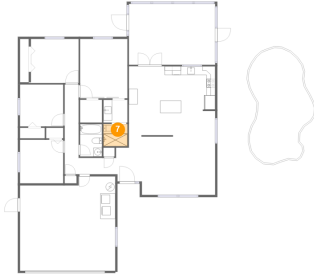
## 6 Floor 1 - Patio



Dimensions: 27'7" x 59'1"  
Area: 1614 sq. ft  
Counted as Living Area: No

Heated: No  
Finished: Yes  
Enclosed: No  
Contiguous: Yes  
Permitted: Yes  
Wet Space: No  
Addition: No  
Conversion: No

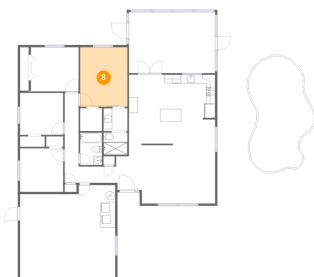
## 7 Floor 1 - Bath



Dimensions: 5'6" x 5'1"  
Area: 28 sq. ft  
Counted as Living Area:  
Yes

Heated: Yes  
Finished: Yes  
Enclosed: Yes  
Contiguous:  
Yes  
Permitted: Yes  
Wet Space: Yes  
Addition: No  
Conversion: No

## 8 Floor 1 - Primary Bedroom



Dimensions: 10'10" x 13'7"  
Area: 148 sq. ft  
Counted as Living Area:  
Yes

Heated: Yes  
Finished: Yes  
Enclosed: Yes  
Contiguous:  
Yes  
Permitted: Yes  
Wet Space: No  
Addition: No  
Conversion: No

# 5896 Whistlewood Way, Central Sarasota, Sarasota Springs, Sarasota, Sarasota County,

## 9 Floor 1 - Bath



Dimensions: 5'6" x 5'3"  
Area: 29 sq. ft  
Counted as Living Area:  
Yes

Heated: Yes  
Finished: Yes  
Enclosed: Yes  
Contiguous:  
Yes  
Permitted: Yes  
Wet Space: Yes  
Addition: No  
Conversion: No

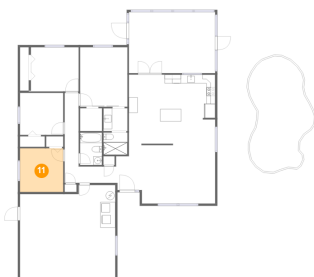
## 10 Floor 1 - Bedroom



Dimensions: 10'11" x 10'1"  
Area: 111 sq. ft  
Counted as Living Area:  
Yes

Heated: Yes  
Finished: Yes  
Enclosed: Yes  
Contiguous:  
Yes  
Permitted: Yes  
Wet Space: No  
Addition: No  
Conversion: No

## 11 Floor 1 - Bedroom

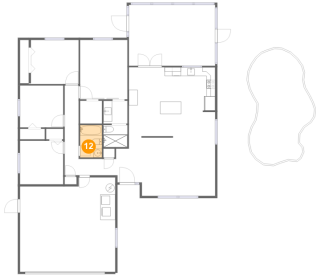


Dimensions: 9'11" x 10'0"  
Area: 99 sq. ft  
Counted as Living Area:  
Yes

Heated: Yes  
Finished: Yes  
Enclosed: Yes  
Contiguous:  
Yes  
Permitted: Yes  
Wet Space: No  
Addition: No  
Conversion: No

# 5896 Whistlewood Way, Central Sarasota, Sarasota Springs, Sarasota, Sarasota County,

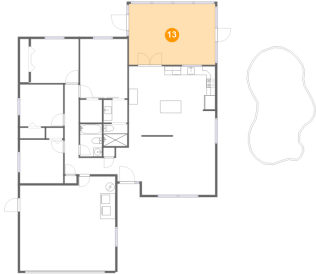
## 12 Floor 1 - Bath



Dimensions: 5'0" x 7'5"  
Area: 37 sq. ft  
Counted as Living Area:  
Yes

Heated: Yes  
Finished: Yes  
Enclosed: Yes  
Contiguous:  
Yes  
Permitted: Yes  
Wet Space: Yes  
Addition: No  
Conversion: No

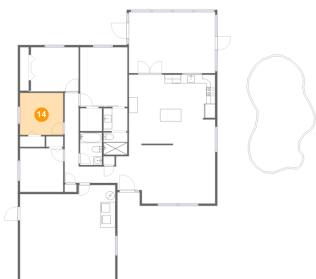
## 13 Floor 1 - Sunroom



Dimensions: 19'9" x 14'0"  
Area: 276 sq. ft  
Counted as Living Area:  
Yes

Heated: Yes  
Finished: Yes  
Enclosed: Yes  
Contiguous:  
Yes  
Permitted: Yes  
Wet Space: No  
Addition: No  
Conversion: No

## 14 Floor 1 - Bedroom



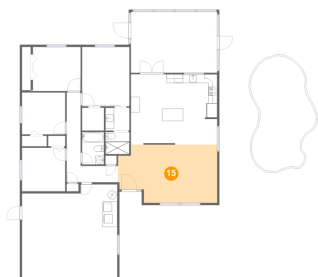
Dimensions: 9'11" x 9'7"  
Area: 95 sq. ft  
Counted as Living Area:  
Yes

Heated: Yes  
Finished: Yes  
Enclosed: Yes  
Contiguous:  
Yes  
Permitted: Yes  
Wet Space: No  
Addition: No  
Conversion: No



# 5896 Whistlewood Way, Central Sarasota, Sarasota Springs, Sarasota, Sarasota County,

## 15 Floor 1 - Living Room



Dimensions: 22'9" x 13'4"  
Area: 277 sq. ft  
Counted as Living Area:  
Yes

Heated: Yes  
Finished: Yes  
Enclosed: Yes  
Contiguous:  
Yes  
Permitted: Yes  
Wet Space: No  
Addition: No  
Conversion: No