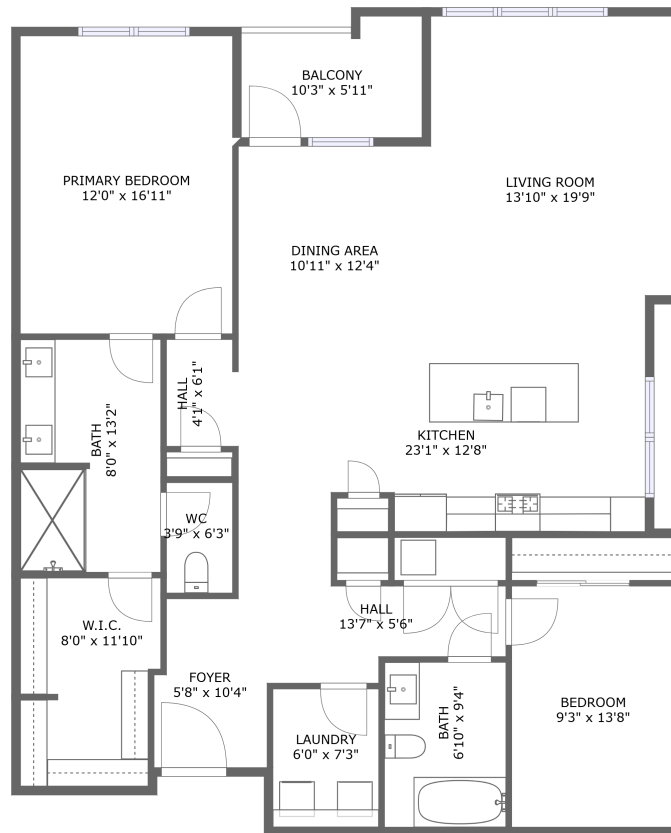



106 St Ives Pl unit 407, Oxon Hill, MD, US



Property summary

 **0** Garages

 **2** Bedrooms

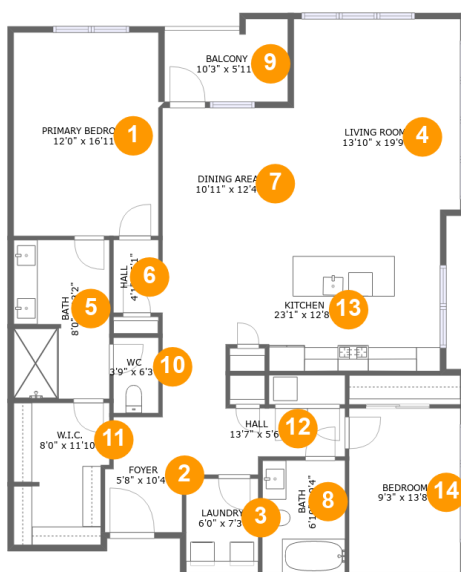
 **2** Bathrooms

 **0** Half baths

 **1** Floors

 **1,551**
Gross living
area sqft

 **1,615**
Total sqft

106 St Ives Pl unit 407, Oxon Hill, MD, US**Room dimensions**

Floor 1

Total sqft: 1615 Living area: 1551

#		Dimensions	sqft	Counted as living area
1	Primary Bedroom	12'0" x 16'11"	204 sq. ft	Yes
2	Foyer	5'8" x 10'4"	60 sq. ft	Yes
3	Laundry	6'0" x 7'3"	47 sq. ft	Yes
4	Living Room	13'10" x 19'9"	267 sq. ft	Yes
5	Bath	8'0" x 13'2"	104 sq. ft	Yes
6	Hall	4'1" x 6'1"	24 sq. ft	Yes
7	Dining Area	10'11" x 12'4"	135 sq. ft	Yes
8	Bath	6'10" x 9'4"	64 sq. ft	Yes
9	Balcony	10'3" x 5'11"	64 sq. ft	No
10	WC	3'9" x 6'3"	23 sq. ft	Yes
11	W.I.C.	8'0" x 11'10"	89 sq. ft	Yes

Scan captured on Sat, 15 Feb 2025 17:26:41 GMT

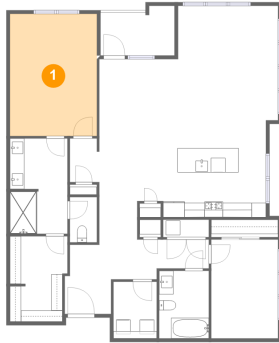
Information is calculated by Cubicasa technology deemed highly reliable but not guaranteed.

106 St Ives Pl unit 407, Oxon Hill, MD, US

#		Dimensions	sqft	Counted as living area
12	Hall	13'7" x 5'6"	64 sq. ft	Yes
13	Kitchen	23'1" x 12'8"	229 sq. ft	Yes
14	Bedroom	9'3" x 13'8"	127 sq. ft	Yes

106 St Ives Pl unit 407, Oxon Hill, MD, US

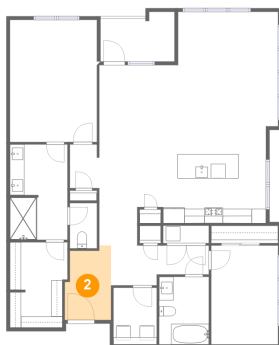
1 Floor 1 - Primary Bedroom



Dimensions: 12'0" x 16'11"
Area: 204 sq. ft
Counted as living area: Yes

Heated: Yes
Finished: Yes
Enclosed: Yes
Contiguous: Yes
Permitted: Yes
Wet space: No
Addition: No
Conversion: No

2 Floor 1 - Foyer

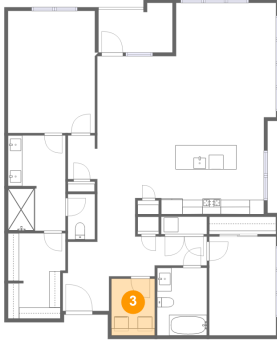


Dimensions: 5'8" x 10'4"
Area: 60 sq. ft
Counted as living area: Yes

Heated: Yes
Finished: Yes
Enclosed: Yes
Contiguous: Yes
Permitted: Yes
Wet space: No
Addition: No
Conversion: No

106 St Ives Pl unit 407, Oxon Hill, MD, US

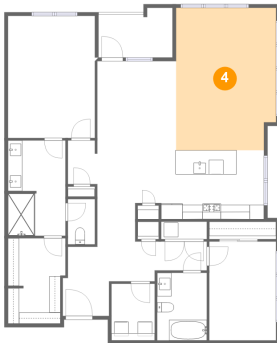
3 Floor 1 - Laundry



Dimensions: 6'0" x 7'3"
Area: 47 sq. ft
Counted as living area: Yes

Heated: Yes
Finished: Yes
Enclosed: Yes
Contiguous: Yes
Permitted: Yes
Wet space: No
Addition: No
Conversion: No

4 Floor 1 - Living Room



Dimensions: 13'10" x 19'9"
Area: 267 sq. ft
Counted as living area: Yes

Heated: Yes
Finished: Yes
Enclosed: Yes
Contiguous: Yes
Permitted: Yes
Wet space: No
Addition: No
Conversion: No

5 Floor 1 - Bath

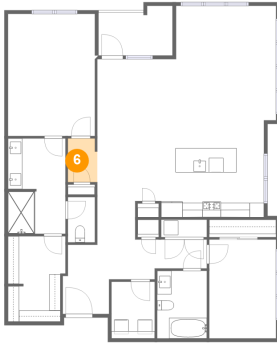


Dimensions: 8'0" x 13'2"
Area: 104 sq. ft
Counted as living area: Yes

Heated: Yes
Finished: Yes
Enclosed: Yes
Contiguous: Yes
Permitted: Yes
Wet space: Yes
Addition: No
Conversion: No

106 St Ives Pl unit 407, Oxon Hill, MD, US

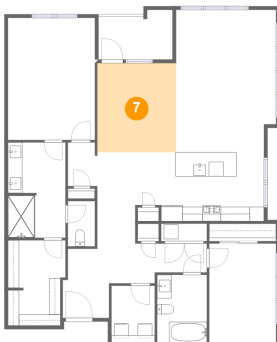
6 Floor 1 - Hall



Dimensions: 4'1" x 6'1"
Area: 24 sq. ft
Counted as living area: Yes

Heated: Yes
Finished: Yes
Enclosed: Yes
Contiguous: Yes
Permitted: Yes
Wet space: No
Addition: No
Conversion: No

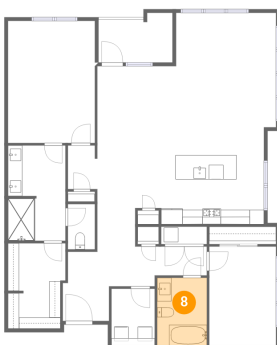
7 Floor 1 - Dining Area



Dimensions: 10'11" x 12'4"
Area: 135 sq. ft
Counted as living area: Yes

Heated: Yes
Finished: Yes
Enclosed: Yes
Contiguous: Yes
Permitted: Yes
Wet space: No
Addition: No
Conversion: No

8 Floor 1 - Bath

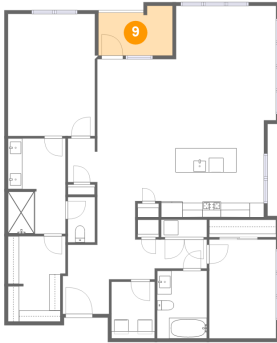


Dimensions: 6'10" x 9'4"
Area: 64 sq. ft
Counted as living area: Yes

Heated: Yes
Finished: Yes
Enclosed: Yes
Contiguous: Yes
Permitted: Yes
Wet space: Yes
Addition: No
Conversion: No

106 St Ives Pl unit 407, Oxon Hill, MD, US

9 Floor 1 - Balcony



Dimensions: 10'3" x 5'11"
Area: 64 sq. ft
Counted as living area: No

Heated: No
Finished: Yes
Enclosed: No
Contiguous: Yes
Permitted: Yes
Wet space: No
Addition: No
Conversion: No

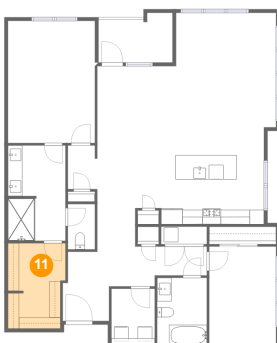
10 Floor 1 - WC



Dimensions: 3'9" x 6'3"
Area: 23 sq. ft
Counted as living area: Yes

Heated: Yes
Finished: Yes
Enclosed: Yes
Contiguous: Yes
Permitted: Yes
Wet space: Yes
Addition: No
Conversion: No

11 Floor 1 - W.I.C.

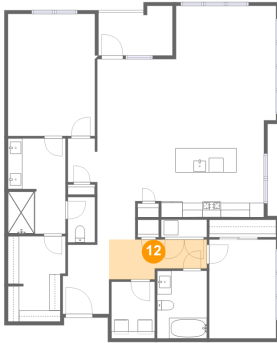


Dimensions: 8'0" x 11'10"
Area: 89 sq. ft
Counted as living area: Yes

Heated: Yes
Finished: Yes
Enclosed: Yes
Contiguous: Yes
Permitted: Yes
Wet space: No
Addition: No
Conversion: No

106 St Ives Pl unit 407, Oxon Hill, MD, US

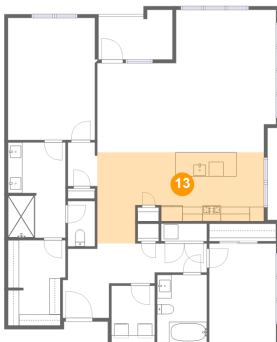
12 Floor 1 - Hall



Dimensions: 13'7" x 5'6"
Area: 64 sq. ft
Counted as living area: Yes

Heated: Yes
Finished: Yes
Enclosed: Yes
Contiguous: Yes
Permitted: Yes
Wet space: No
Addition: No
Conversion: No

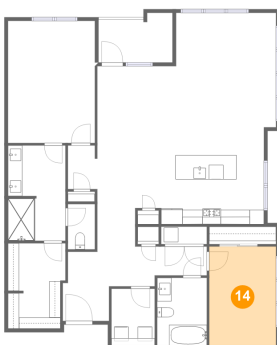
13 Floor 1 - Kitchen



Dimensions: 23'1" x 12'8"
Area: 229 sq. ft
Counted as living area: Yes

Heated: Yes
Finished: Yes
Enclosed: Yes
Contiguous: Yes
Permitted: Yes
Wet space: No
Addition: No
Conversion: No

14 Floor 1 - Bedroom



Dimensions: 9'3" x 13'8"
Area: 127 sq. ft
Counted as living area: Yes

Heated: Yes
Finished: Yes
Enclosed: Yes
Contiguous: Yes
Permitted: Yes
Wet space: No
Addition: No
Conversion: No