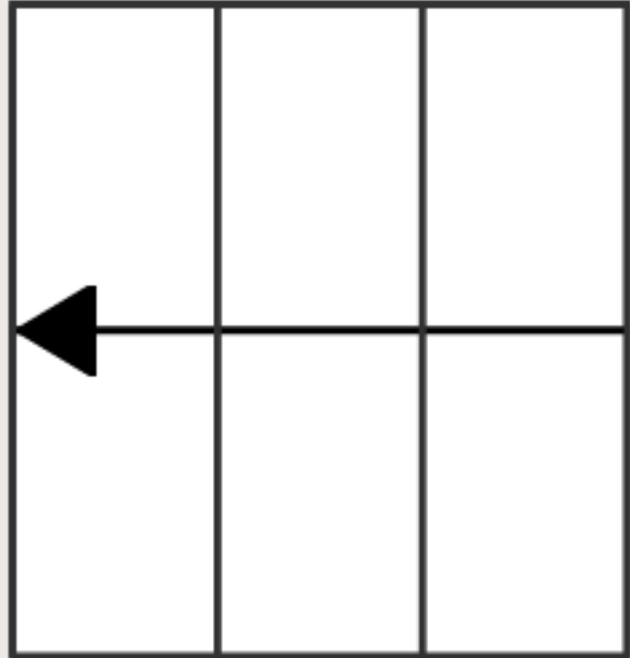
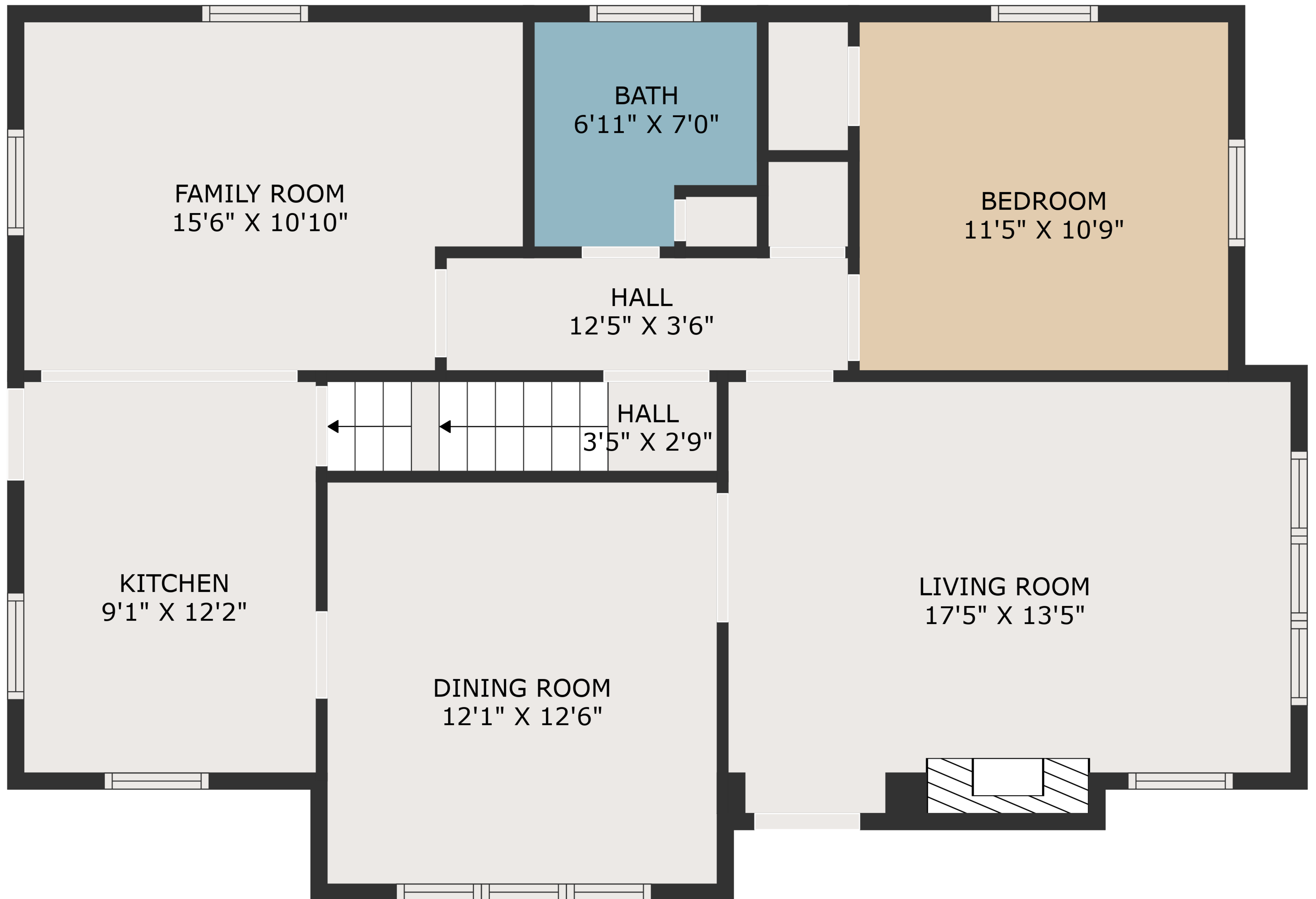


BASEMENT
39'3" X 26'9"



TOTAL: 1579 sq. ft
BELOW GROUND: 0 sq. ft, FLOOR 2: 950 sq. ft, FLOOR 3: 629 sq. ft
EXCLUDED AREAS: BASEMENT: 936 sq. ft, LOW CEILING: 24 sq. ft, WALLS: 198 sq. ft

MEASUREMENTS ARE DEEMED HIGHLY RELIABLE BUT NOT GUARANTEED.

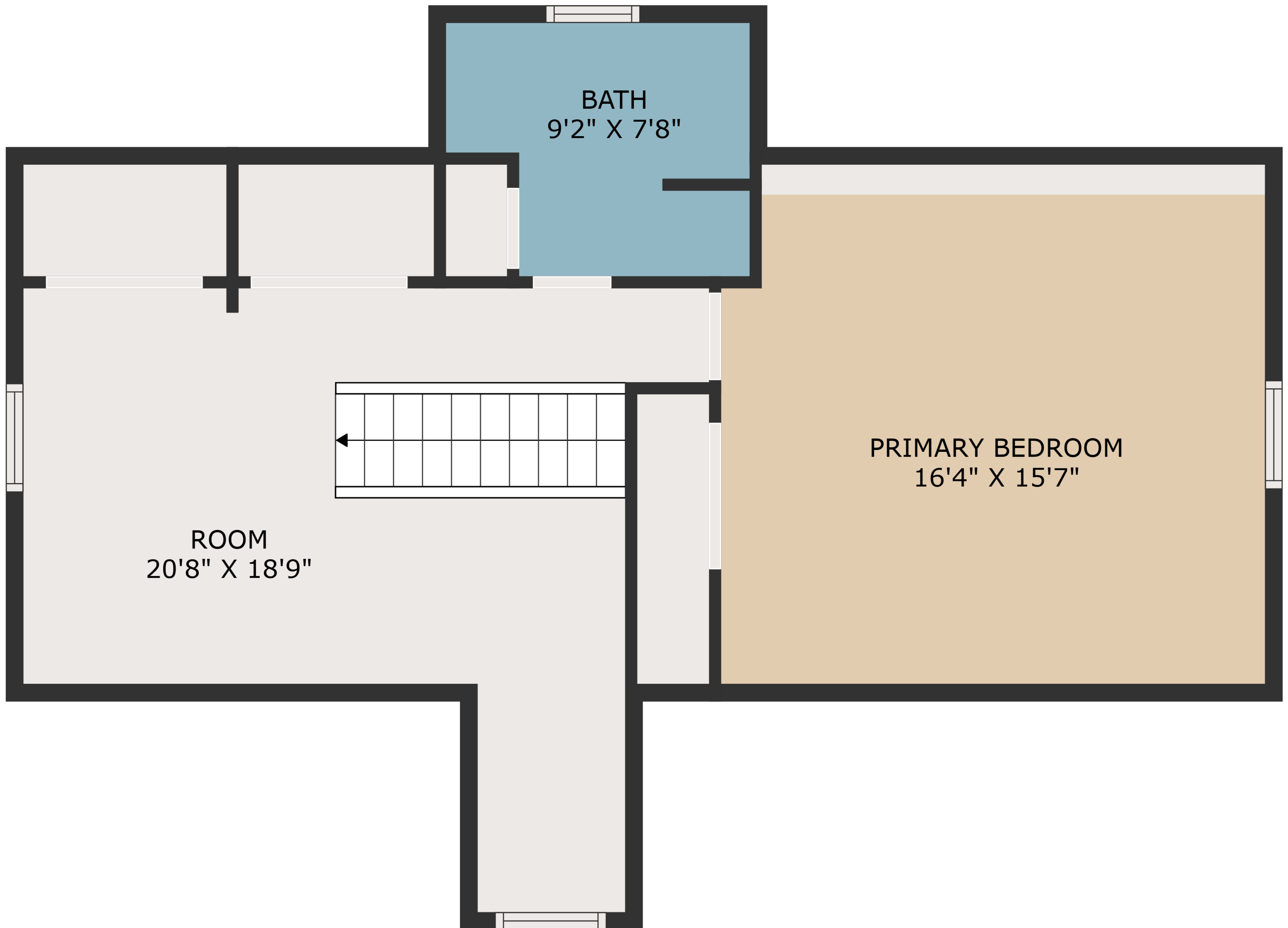


TOTAL: 1579 sq. ft

BELOW GROUND: 0 sq. ft, FLOOR 2: 950 sq. ft, FLOOR 3: 629 sq. ft

EXCLUDED AREAS: BASEMENT: 936 sq. ft, LOW CEILING: 24 sq. ft, WALLS: 198 sq. ft

MEASUREMENTS ARE DEEMED HIGHLY RELIABLE BUT NOT GUARANTEED.



TOTAL: 1579 sq. ft

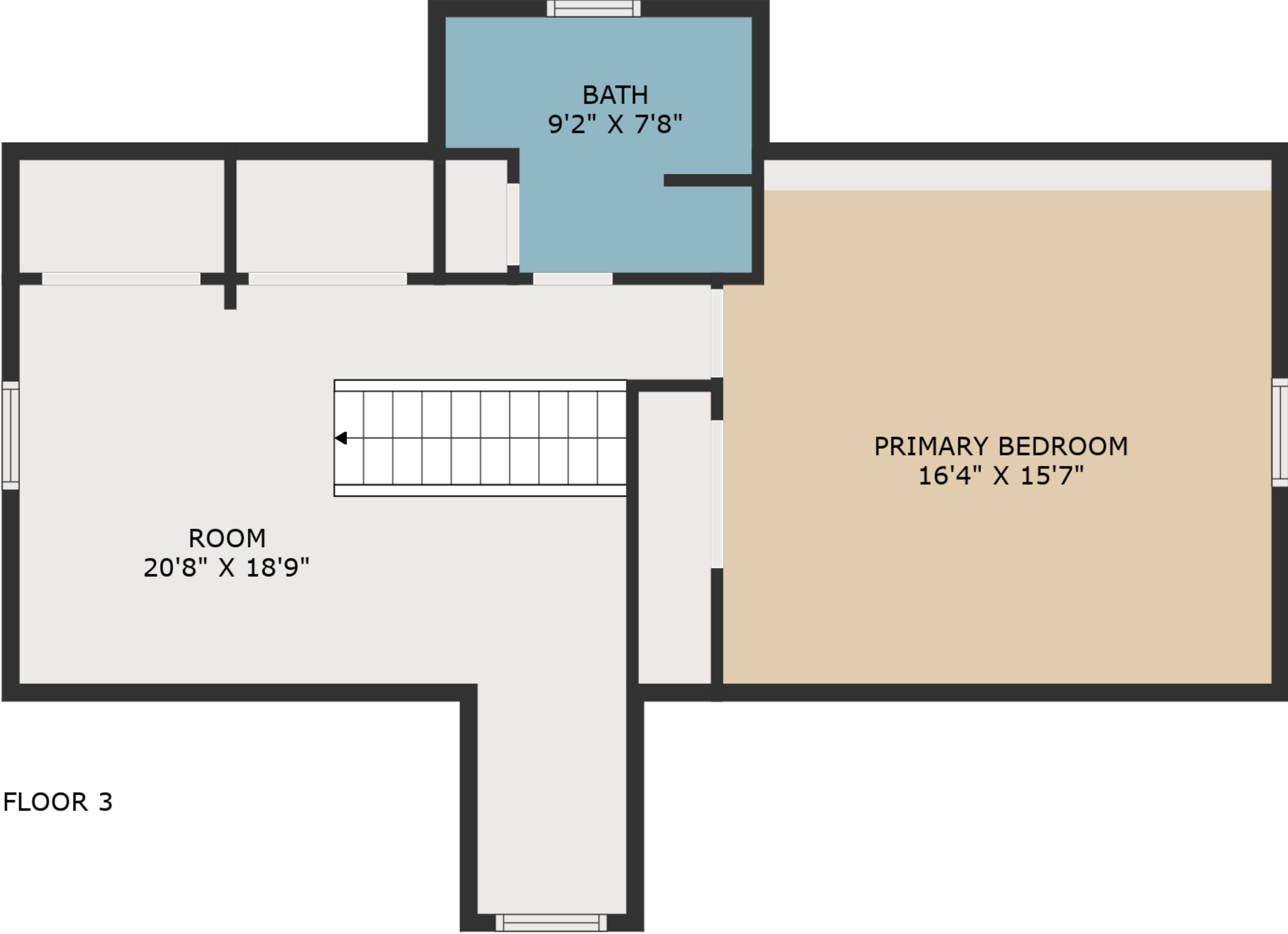
BELOW GROUND: 0 sq. ft, FLOOR 2: 950 sq. ft, FLOOR 3: 629 sq. ft

EXCLUDED AREAS: BASEMENT: 936 sq. ft, LOW CEILING: 24 sq. ft, WALLS: 198 sq. ft

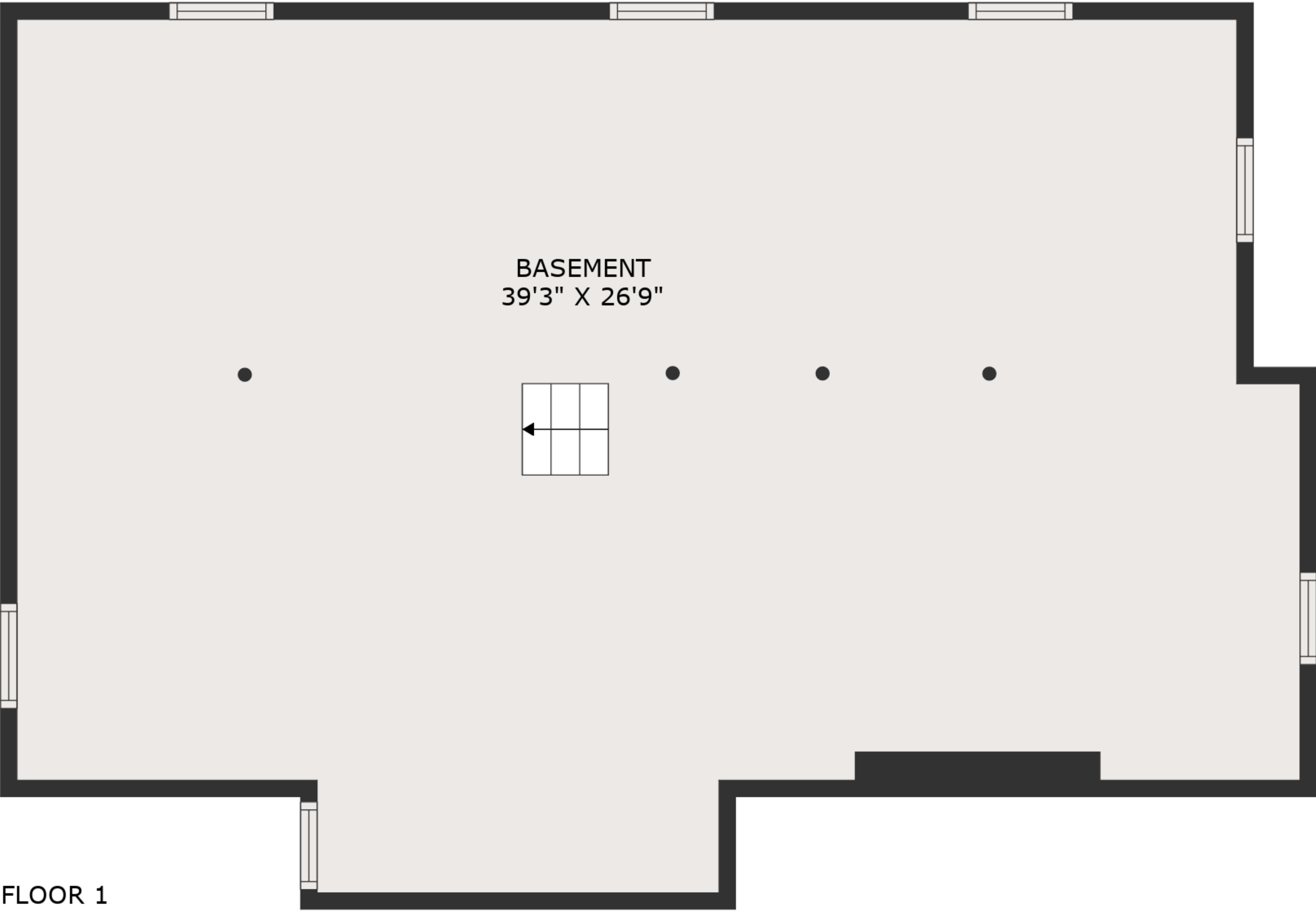
MEASUREMENTS ARE DEEMED HIGHLY RELIABLE BUT NOT GUARANTEED.



FLOOR 2



FLOOR 3



FLOOR 1

TOTAL: 1579 sq. ft
BELOW GROUND: 0 sq. ft, FLOOR 2: 950 sq. ft, FLOOR 3: 629 sq. ft
EXCLUDED AREAS: BASEMENT: 936 sq. ft, LOW CEILING: 24 sq. ft, WALLS: 198 sq. ft
MEASUREMENTS ARE DEEMED HIGHLY RELIABLE BUT NOT GUARANTEED.