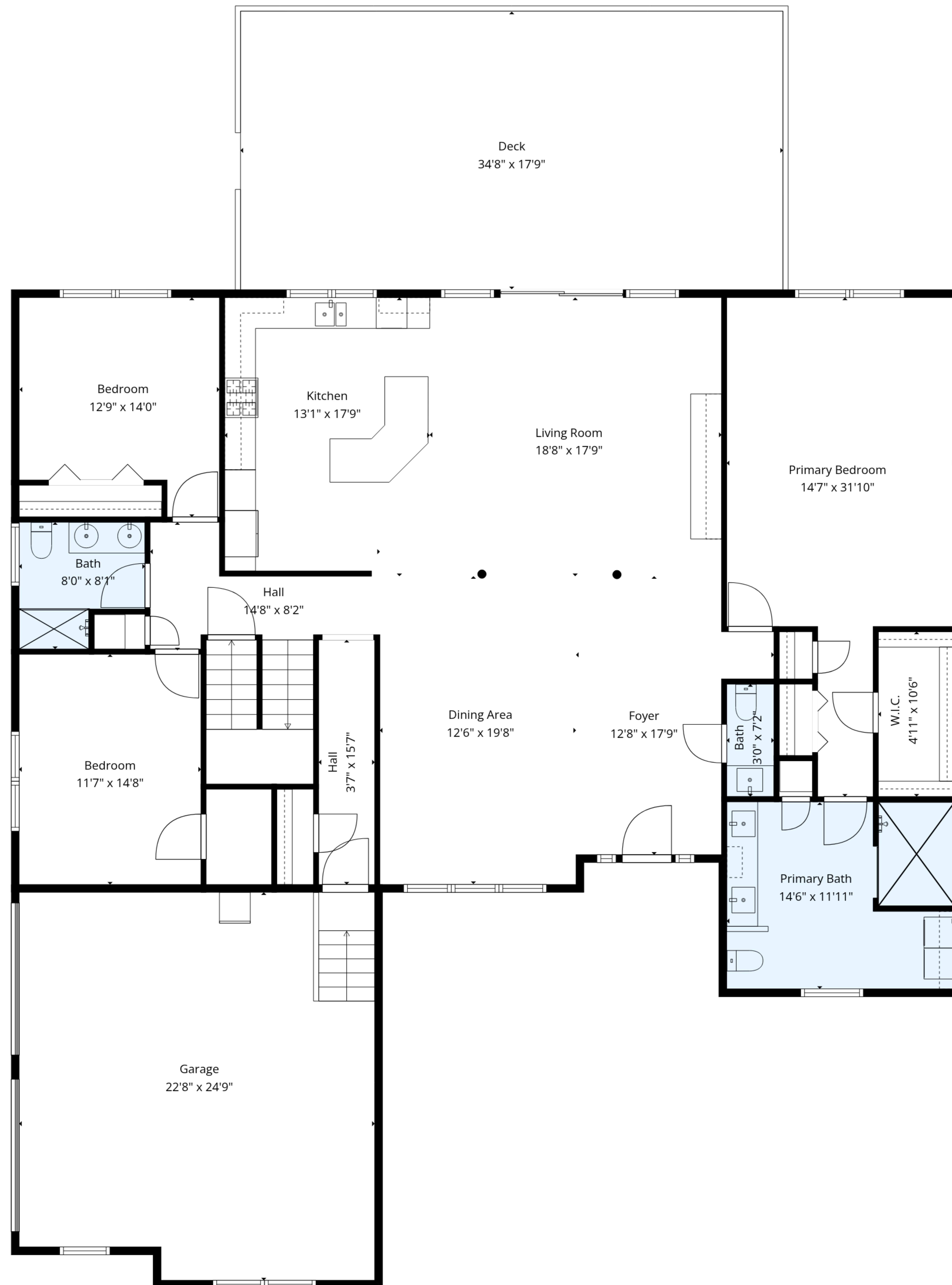


Basement
58'2" x 41'11"

TOTAL: 3055 sq. ft

Basement: 0 sq. ft, 1st floor: 2316 sq. ft, 2nd floor: 739 sq. ft
EXCLUDED AREAS: BASEMENT: 2141 sq. ft, GARAGE: 543 sq. ft, DECK: 616 sq. ft,
ATTIC | STORAGE: 1893 sq. ft, ATTIC | AC: 237 sq. ft, WALLS: 372 sq. ft



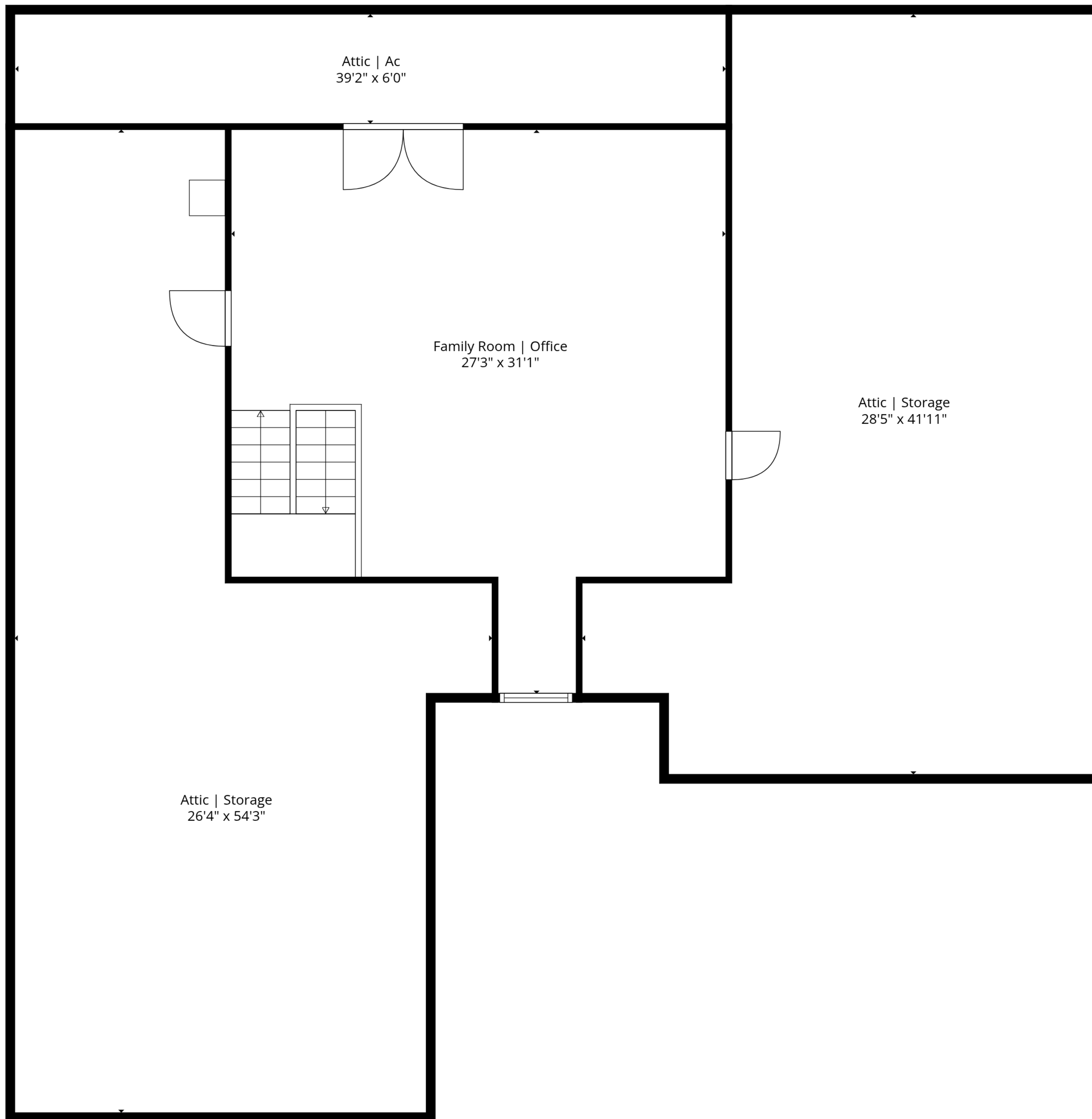


TOTAL: 3055 sq. ft

Basement: 0 sq. ft, 1st floor: 2316 sq. ft, 2nd floor: 739 sq. ft

EXCLUDED AREAS: BASEMENT: 2141 sq. ft, GARAGE: 543 sq. ft, DECK: 616 sq. ft,
 ATTIC | STORAGE: 1893 sq. ft, ATTIC | AC: 237 sq. ft, WALLS: 372 sq. ft





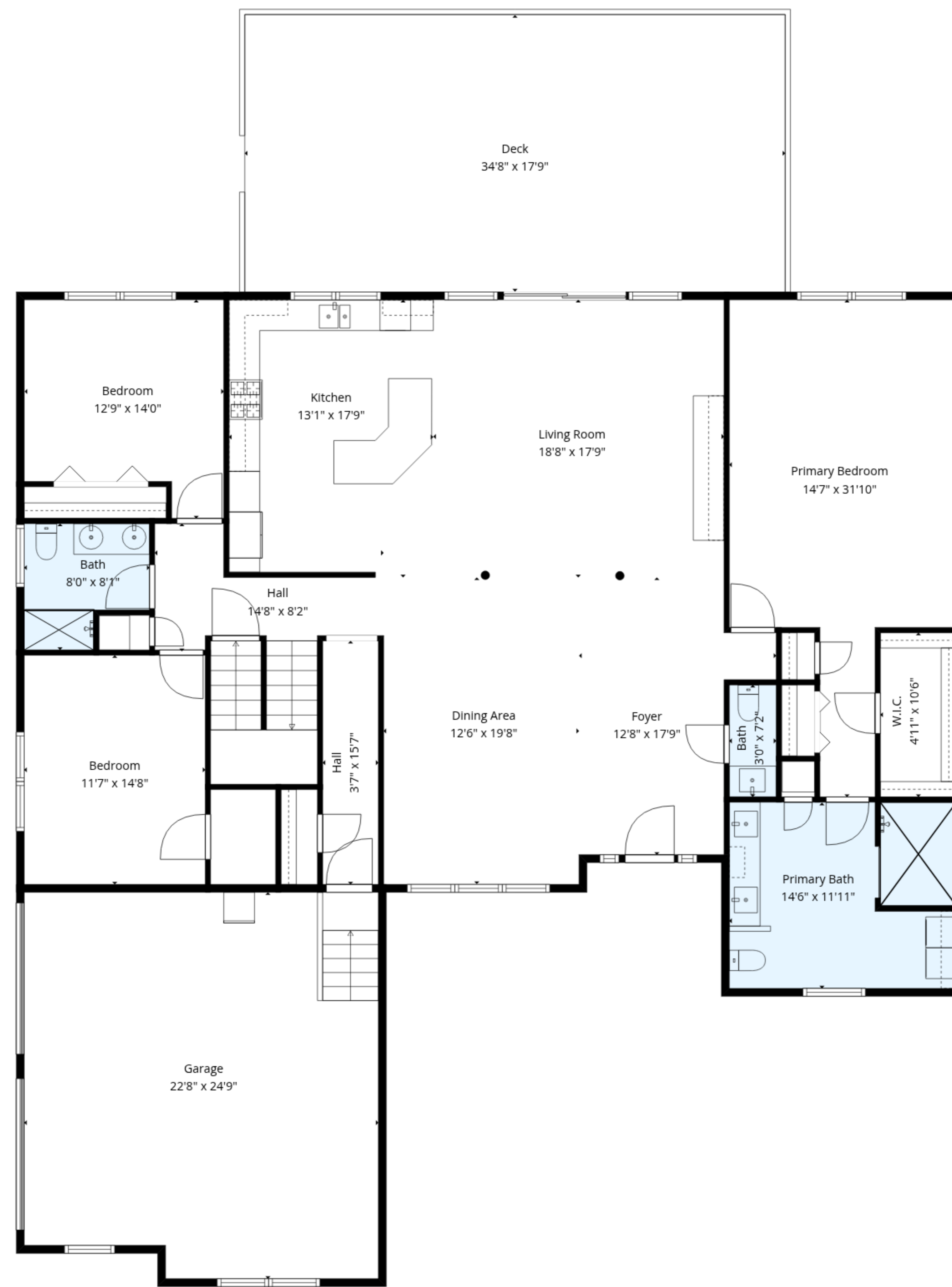
TOTAL: 3055 sq. ft

Basement: 0 sq. ft, 1st floor: 2316 sq. ft, 2nd floor: 739 sq. ft

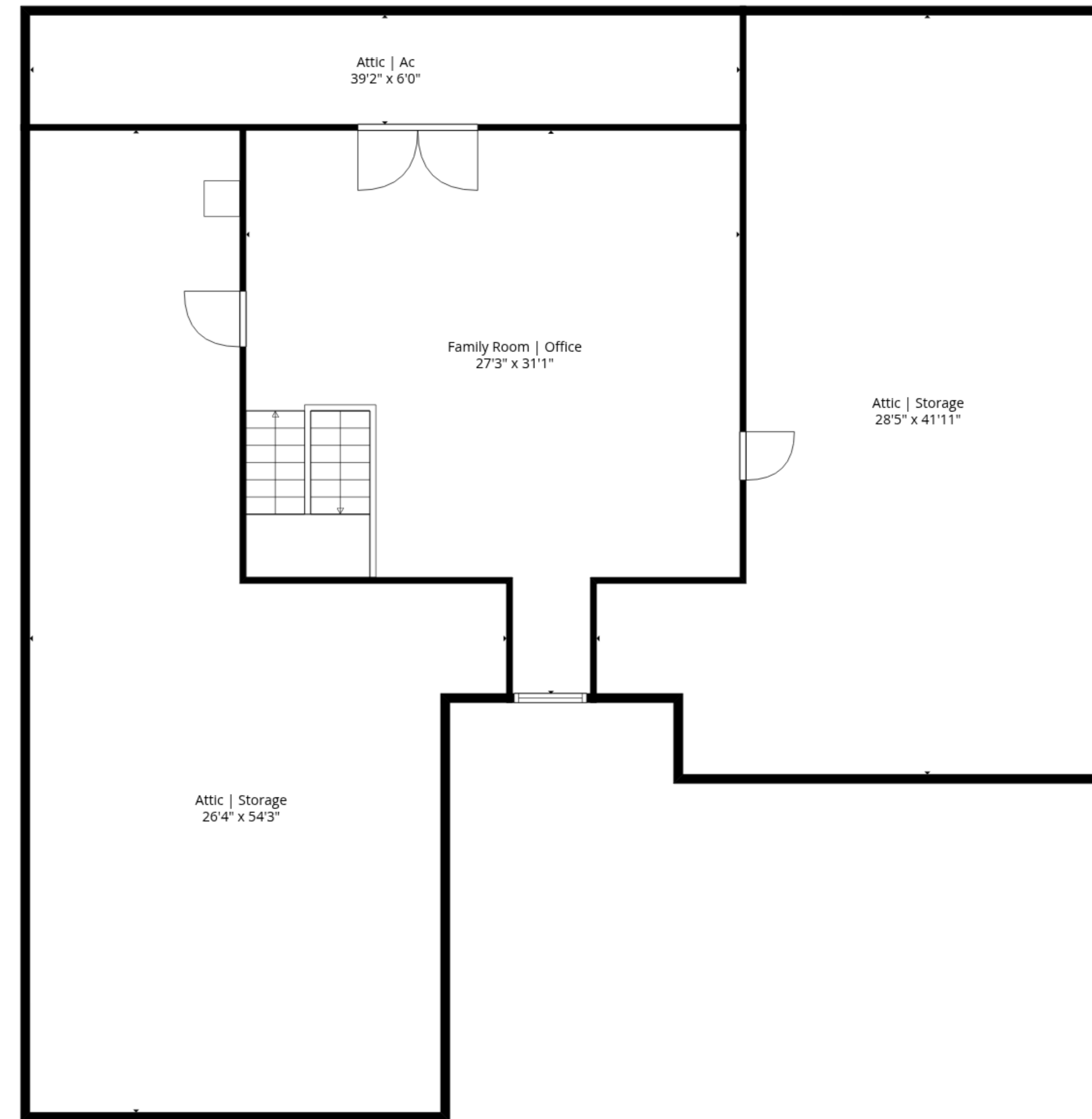
EXCLUDED AREAS: BASEMENT: 2141 sq. ft, GARAGE: 543 sq. ft, DECK: 616 sq. ft,

ATTIC | STORAGE: 1893 sq. ft, ATTIC | AC: 237 sq. ft, WALLS: 372 sq. ft

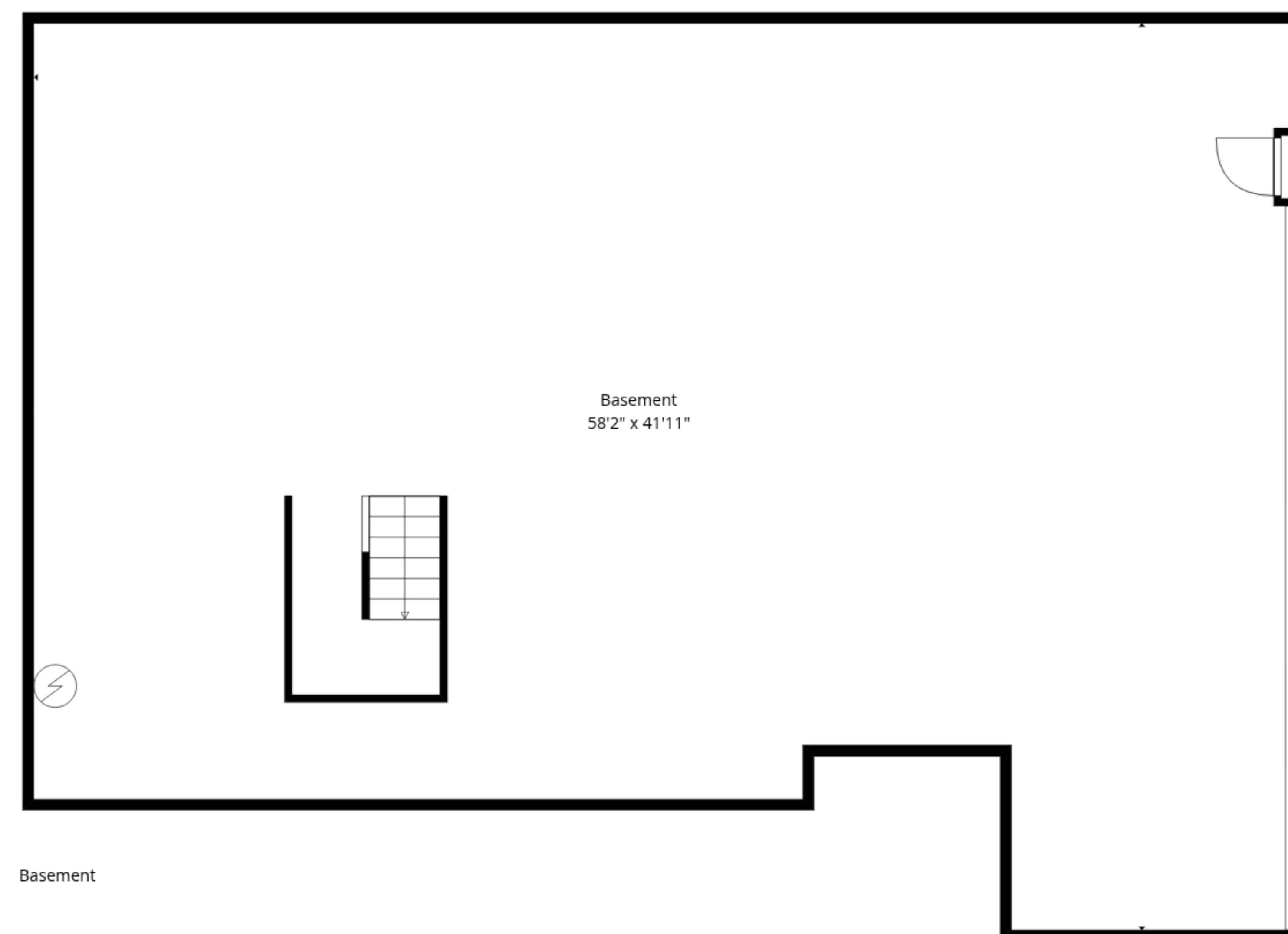




1st Floor



2nd Floor



Basement

TOTAL: 3055 sq. ft

Basement: 0 sq. ft, 1st floor: 2316 sq. ft, 2nd floor: 739 sq. ft

EXCLUDED AREAS: BASEMENT: 2141 sq. ft, GARAGE: 543 sq. ft, DECK: 616 sq. ft,

ATTIC | STORAGE: 1893 sq. ft, ATTIC | AC: 237 sq. ft, WALLS: 372 sq. ft

