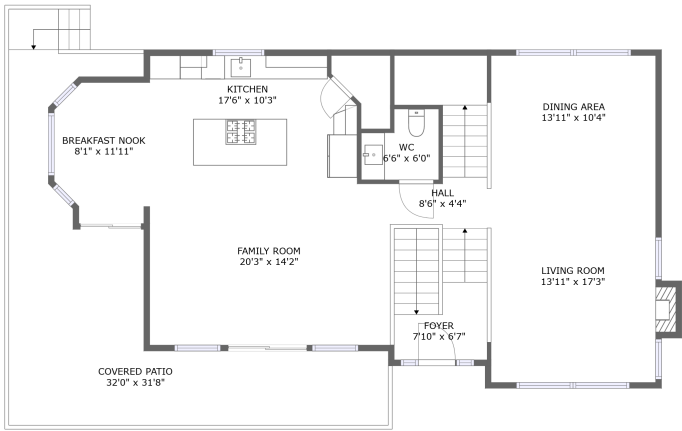
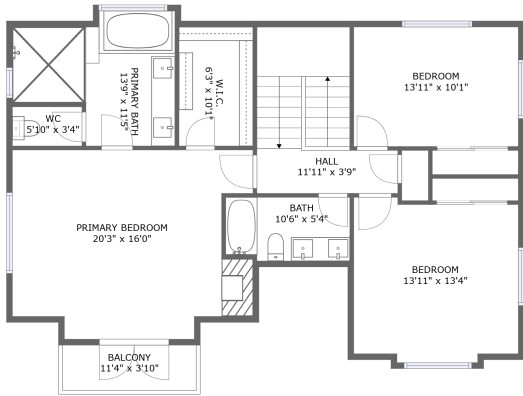


Home report

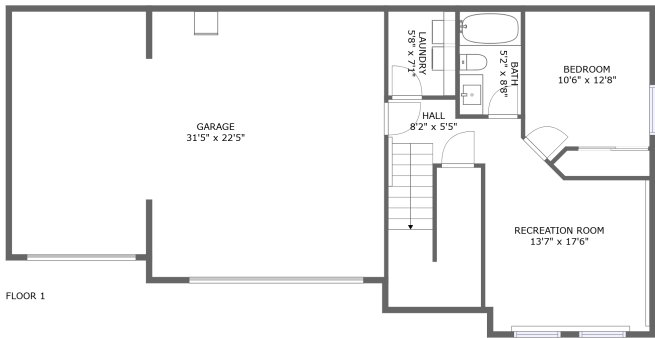
28640 6th Avenue South, Redondo, Des Moines, King County,
Washington, United States, 98198



FLOOR 2




FLOOR 3





FLOOR 1

Property summary

 **1** Garages

 **4** Bedrooms

 **3** Bathrooms

 **1** Half baths

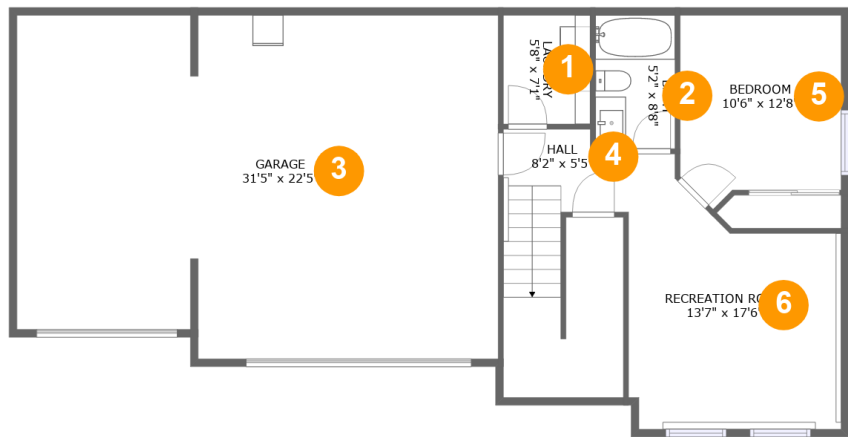
 **3** Floors

 **3,046** Gross living area sqft

 **4,215** Total sqft

Home report

28640 6th Avenue South, Redondo, Des Moines, King County,
Washington, United States, 98198



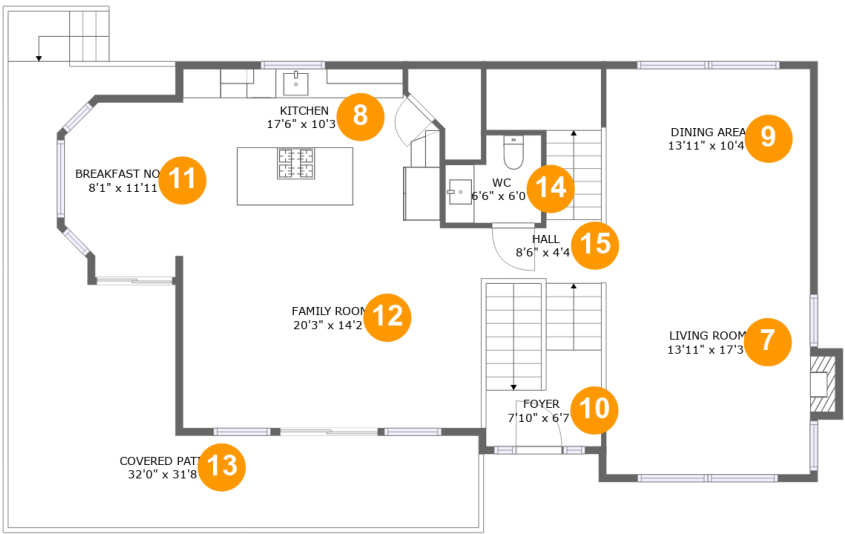
Room dimensions

Floor 1 Total sqft: 1348 Living area: 623

#		Dimensions	sqft	Counted as living area
1	Laundry	5'8" x 7'1"	40 sq. ft	Yes
2	Bath	5'2" x 8'8"	45 sq. ft	Yes
3	Garage	31'5" x 22'5"	677 sq. ft	No
4	Hall	8'2" x 5'5"	131 sq. ft	Yes
5	Bedroom	10'6" x 12'8"	121 sq. ft	Yes
6	Recreation Room	13'7" x 17'6"	198 sq. ft	Yes

Home report

28640 6th Avenue South, Redondo, Des Moines, King County,
Washington, United States, 98198



Room dimensions

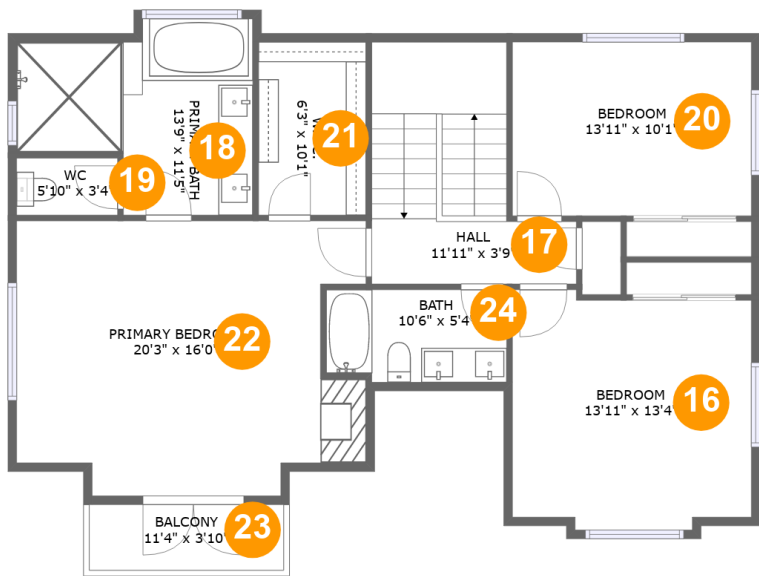
Floor 2

Total sqft: 1663 Living area: 1262

#		Dimensions	sqft	Counted as living area
7	Living Room	13'11" x 17'3"	245 sq. ft	Yes
8	Kitchen	17'6" x 10'3"	172 sq. ft	Yes
9	Dining Area	13'11" x 10'4"	144 sq. ft	Yes
10	Foyer	7'10" x 6'7"	93 sq. ft	Yes
11	Breakfast Nook	8'1" x 11'11"	87 sq. ft	Yes
12	Family Room	20'3" x 14'2"	286 sq. ft	Yes
13	Covered Patio	32'0" x 31'8"	393 sq. ft	No
14	WC	6'6" x 6'0"	34 sq. ft	Yes
15	Hall	8'6" x 4'4"	92 sq. ft	Yes

Home report

28640 6th Avenue South, Redondo, Des Moines, King County,
Washington, United States, 98198



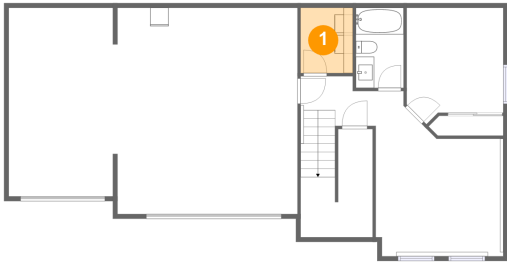
Room dimensions

Floor 3 Total sqft: 1204 Living area: 1161

#		Dimensions	sqft	Counted as living area
16	Bedroom	13'11" x 13'4"	182 sq. ft	Yes
17	Hall	11'11" x 3'9"	125 sq. ft	Yes
18	Primary Bath	13'9" x 11'5"	124 sq. ft	Yes
19	WC	5'10" x 3'4"	19 sq. ft	Yes
20	Bedroom	13'11" x 10'1"	140 sq. ft	Yes
21	W.I.C.	6'3" x 10'1"	63 sq. ft	Yes
22	Primary Bedroom	20'3" x 16'0"	291 sq. ft	Yes
23	Balcony	11'4" x 3'10"	43 sq. ft	No
24	Bath	10'6" x 5'4"	55 sq. ft	Yes

28640 6th Avenue South, Redondo, Des Moines, King County,
Washington, United States, 98198

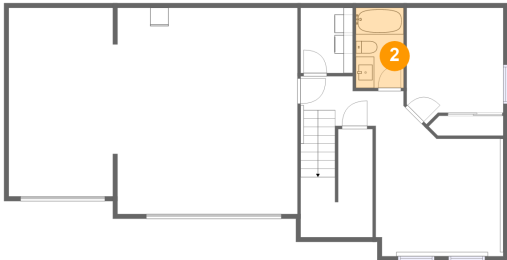
1 Floor 1 - Laundry



Dimensions: 5'8" x 7'1"
Area: 40 sq. ft
Counted as living area: Yes

Heated: Yes
Finished: Yes
Enclosed: Yes
Contiguous: Yes
Permitted: Yes
Wet space: No
Addition: No
Conversion: No

2 Floor 1 - Bath



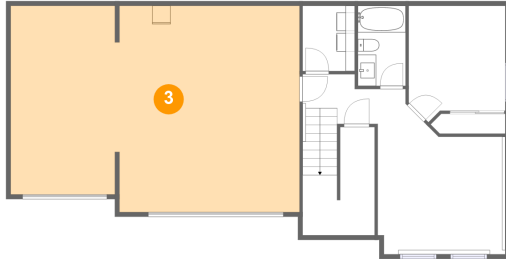
Dimensions: 5'2" x 8'8"
Area: 45 sq. ft
Counted as living area: Yes

Heated: Yes
Finished: Yes
Enclosed: Yes
Contiguous: Yes
Permitted: Yes
Wet space: Yes
Addition: No
Conversion: No

Home report

28640 6th Avenue South, Redondo, Des Moines, King County,
Washington, United States, 98198

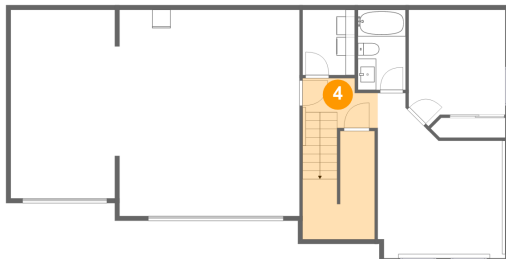
3 Floor 1 - Garage



Dimensions: 31'5" x 22'5"
Area: 677 sq. ft
Counted as living area: No

Heated: No
Finished: No
Enclosed: Yes
Contiguous: Yes
Permitted: Yes
Wet space: No
Addition: No
Conversion: No

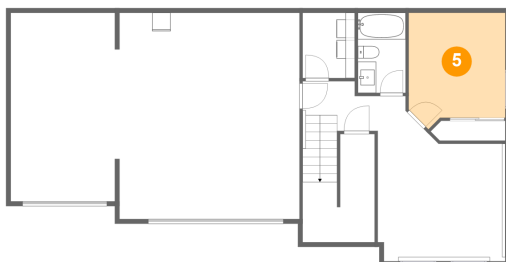
4 Floor 1 - Hall



Dimensions: 8'2" x 5'5"
Area: 131 sq. ft
Counted as living area: Yes

Heated: Yes
Finished: Yes
Enclosed: Yes
Contiguous: Yes
Permitted: Yes
Wet space: No
Addition: No
Conversion: No

5 Floor 1 - Bedroom

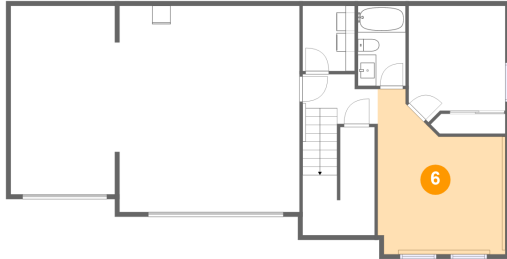


Dimensions: 10'6" x 12'8"
Area: 121 sq. ft
Counted as living area: Yes

Heated: Yes
Finished: Yes
Enclosed: Yes
Contiguous: Yes
Permitted: Yes
Wet space: No
Addition: No
Conversion: No

28640 6th Avenue South, Redondo, Des Moines, King County,
Washington, United States, 98198

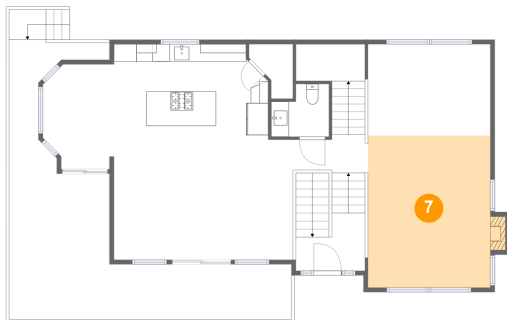
6 Floor 1 - Recreation Room



Dimensions: 13'7" x 17'6"
Area: 198 sq. ft
Counted as living area: Yes

Heated: Yes
Finished: Yes
Enclosed: Yes
Contiguous: Yes
Permitted: Yes
Wet space: No
Addition: No
Conversion: No

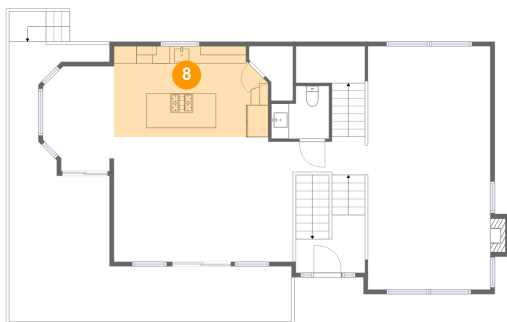
7 Floor 2 - Living Room



Dimensions: 13'11" x 17'3"
Area: 245 sq. ft
Counted as living area: Yes

Heated: Yes
Finished: Yes
Enclosed: Yes
Contiguous: Yes
Permitted: Yes
Wet space: No
Addition: No
Conversion: No

8 Floor 2 - Kitchen

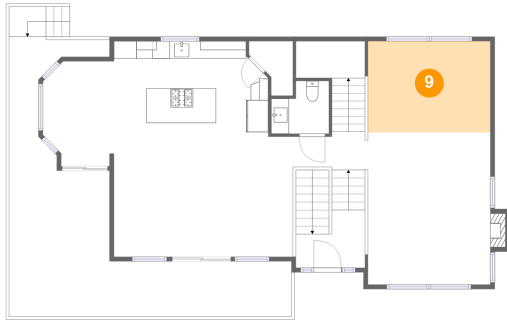


Dimensions: 17'6" x 10'3"
Area: 172 sq. ft
Counted as living area: Yes

Heated: Yes
Finished: Yes
Enclosed: Yes
Contiguous: Yes
Permitted: Yes
Wet space: No
Addition: No
Conversion: No

28640 6th Avenue South, Redondo, Des Moines, King County,
Washington, United States, 98198

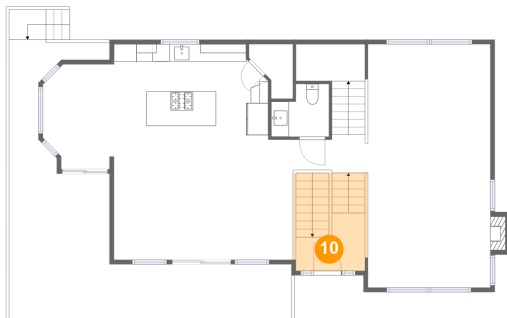
9 Floor 2 - Dining Area



Dimensions: 13'11" x 10'4"
Area: 144 sq. ft
Counted as living area: Yes

Heated: Yes
Finished: Yes
Enclosed: Yes
Contiguous: Yes
Permitted: Yes
Wet space: No
Addition: No
Conversion: No

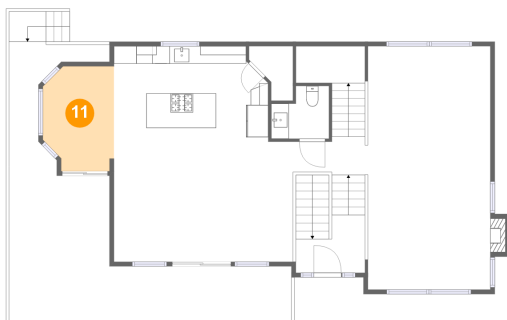
10 Floor 2 - Foyer



Dimensions: 7'10" x 6'7"
Area: 93 sq. ft
Counted as living area: Yes

Heated: Yes
Finished: Yes
Enclosed: Yes
Contiguous: Yes
Permitted: Yes
Wet space: No
Addition: No
Conversion: No

11 Floor 2 - Breakfast Nook

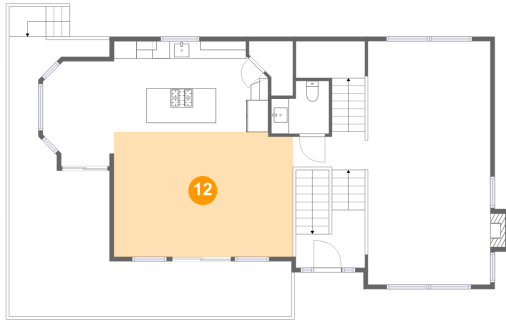


Dimensions: 8'1" x 11'11"
Area: 87 sq. ft
Counted as living area: Yes

Heated: Yes
Finished: Yes
Enclosed: Yes
Contiguous: Yes
Permitted: Yes
Wet space: No
Addition: No
Conversion: No

28640 6th Avenue South, Redondo, Des Moines, King County,
Washington, United States, 98198

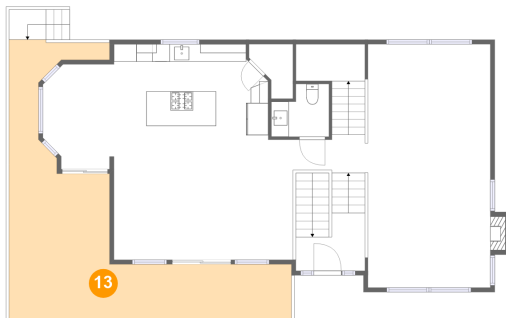
12 Floor 2 - Family Room



Dimensions: 20'3" x 14'2"
Area: 286 sq. ft
Counted as living area: Yes

Heated: Yes
Finished: Yes
Enclosed: Yes
Contiguous: Yes
Permitted: Yes
Wet space: No
Addition: No
Conversion: No

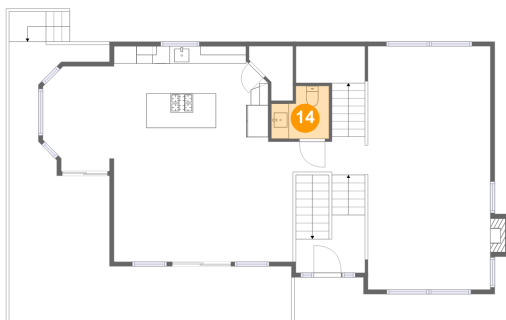
13 Floor 2 - Covered Patio



Dimensions: 32'0" x 31'8"
Area: 393 sq. ft
Counted as living area: No

Heated: No
Finished: Yes
Enclosed: No
Contiguous: Yes
Permitted: Yes
Wet space: No
Addition: No
Conversion: No

14 Floor 2 - WC



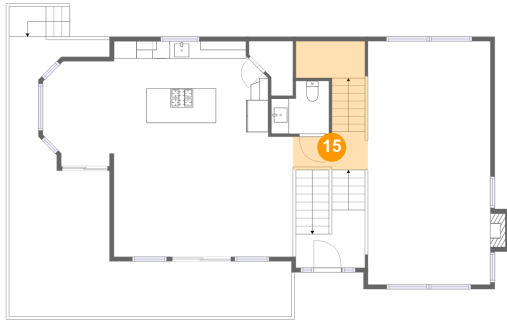
Dimensions: 6'6" x 6'0"
Area: 34 sq. ft
Counted as living area: Yes

Heated: Yes
Finished: Yes
Enclosed: Yes
Contiguous: Yes
Permitted: Yes
Wet space: Yes
Addition: No
Conversion: No

Home report

28640 6th Avenue South, Redondo, Des Moines, King County,
Washington, United States, 98198

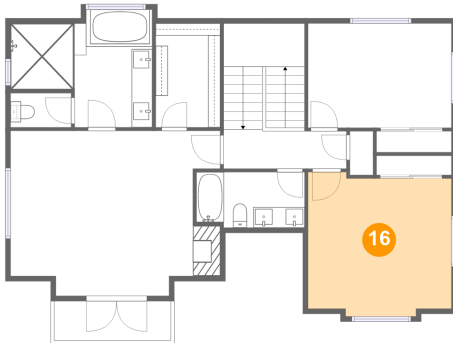
15 Floor 2 - Hall



Dimensions: 8'6" x 4'4"
Area: 92 sq. ft
Counted as living area: Yes

Heated: Yes
Finished: Yes
Enclosed: Yes
Contiguous: Yes
Permitted: Yes
Wet space: No
Addition: No
Conversion: No

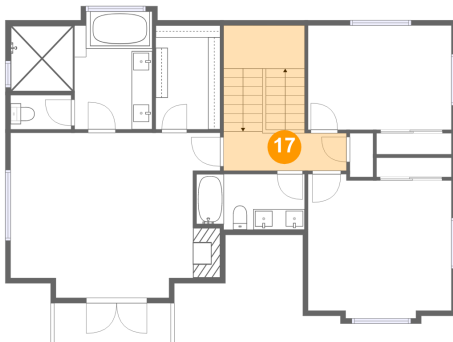
16 Floor 3 - Bedroom



Dimensions: 13'11" x 13'4"
Area: 182 sq. ft
Counted as living area: Yes

Heated: Yes
Finished: Yes
Enclosed: Yes
Contiguous: Yes
Permitted: Yes
Wet space: No
Addition: No
Conversion: No

17 Floor 3 - Hall

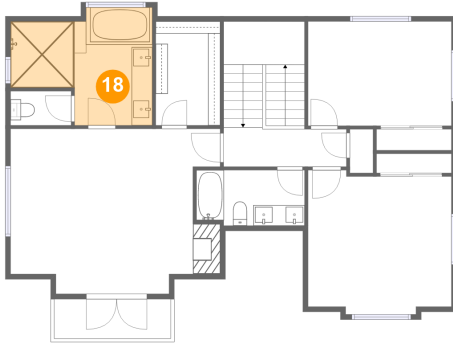


Dimensions: 11'11" x 3'9"
Area: 125 sq. ft
Counted as living area: Yes

Heated: Yes
Finished: Yes
Enclosed: Yes
Contiguous: Yes
Permitted: Yes
Wet space: No
Addition: No
Conversion: No

28640 6th Avenue South, Redondo, Des Moines, King County,
Washington, United States, 98198

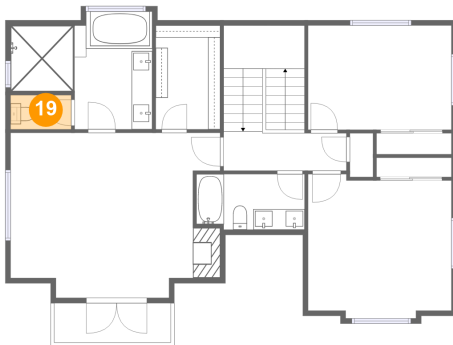
18 Floor 3 - Primary Bath



Dimensions: 13'9" x 11'5"
Area: 124 sq. ft
Counted as living area: Yes

Heated: Yes
Finished: Yes
Enclosed: Yes
Contiguous: Yes
Permitted: Yes
Wet space: Yes
Addition: No
Conversion: No

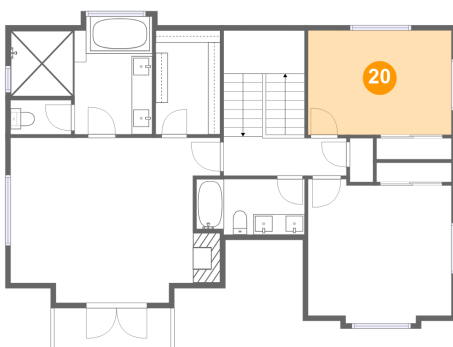
19 Floor 3 - WC



Dimensions: 5'10" x 3'4"
Area: 19 sq. ft
Counted as living area: Yes

Heated: Yes
Finished: Yes
Enclosed: Yes
Contiguous: Yes
Permitted: Yes
Wet space: Yes
Addition: No
Conversion: No

20 Floor 3 - Bedroom



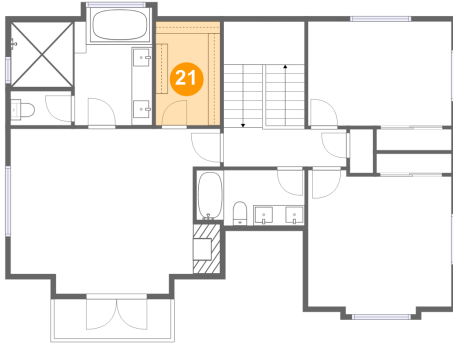
Dimensions: 13'11" x 10'1"
Area: 140 sq. ft
Counted as living area: Yes

Heated: Yes
Finished: Yes
Enclosed: Yes
Contiguous: Yes
Permitted: Yes
Wet space: No
Addition: No
Conversion: No

Home report

28640 6th Avenue South, Redondo, Des Moines, King County,
Washington, United States, 98198

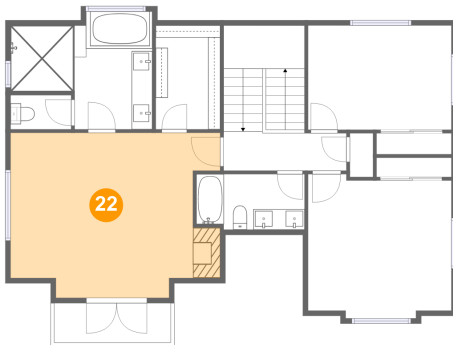
21 Floor 3 - W.I.C.



Dimensions: 6'3" x 10'1"
Area: 63 sq. ft
Counted as living area: Yes

Heated: Yes
Finished: Yes
Enclosed: Yes
Contiguous: Yes
Permitted: Yes
Wet space: No
Addition: No
Conversion: No

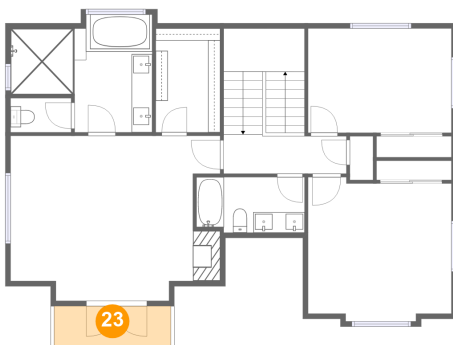
22 Floor 3 - Primary Bedroom



Dimensions: 20'3" x 16'0"
Area: 291 sq. ft
Counted as living area: Yes

Heated: Yes
Finished: Yes
Enclosed: Yes
Contiguous: Yes
Permitted: Yes
Wet space: No
Addition: No
Conversion: No

23 Floor 3 - Balcony

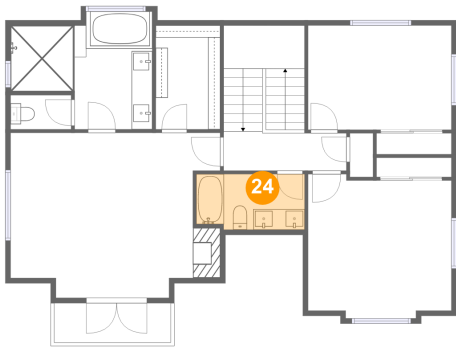


Dimensions: 11'4" x 3'10"
Area: 43 sq. ft
Counted as living area: No

Heated: No
Finished: Yes
Enclosed: No
Contiguous: Yes
Permitted: Yes
Wet space: No
Addition: No
Conversion: No

28640 6th Avenue South, Redondo, Des Moines, King County,
Washington, United States, 98198

24 Floor 3 - Bath



Dimensions: 10'6" x 5'4"
Area: 55 sq. ft
Counted as living area: Yes

Heated: Yes
Finished: Yes
Enclosed: Yes
Contiguous: Yes
Permitted: Yes
Wet space: Yes
Addition: No
Conversion: No