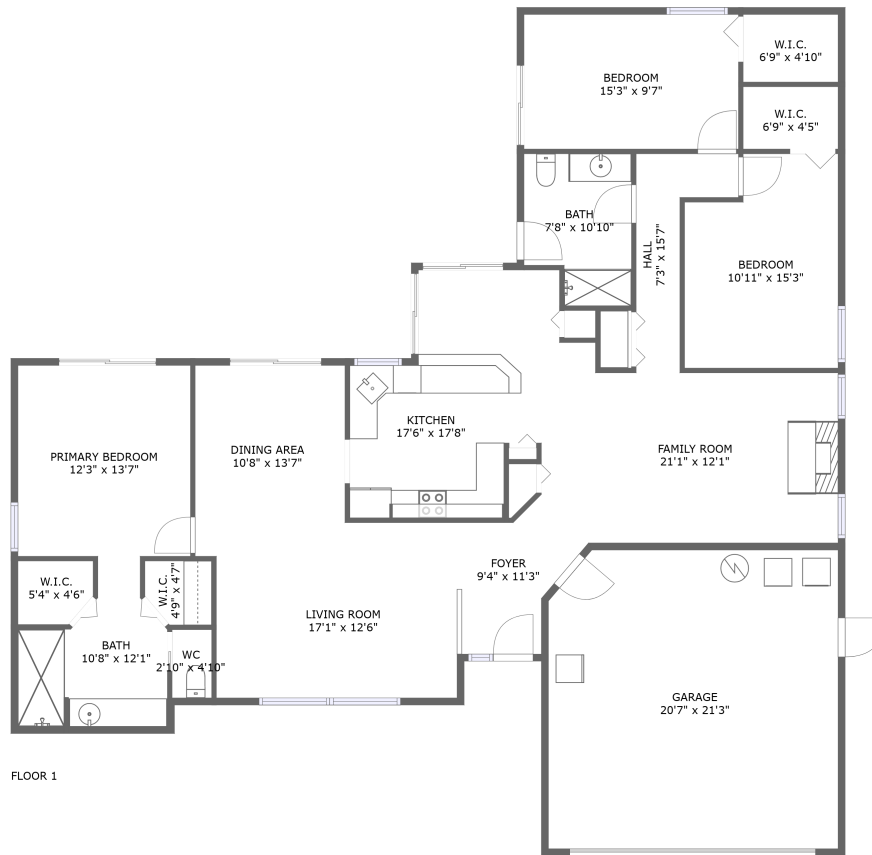


19532 Midway Boulevard, Port Charlotte, Charlotte County, Florida, United States, 33948

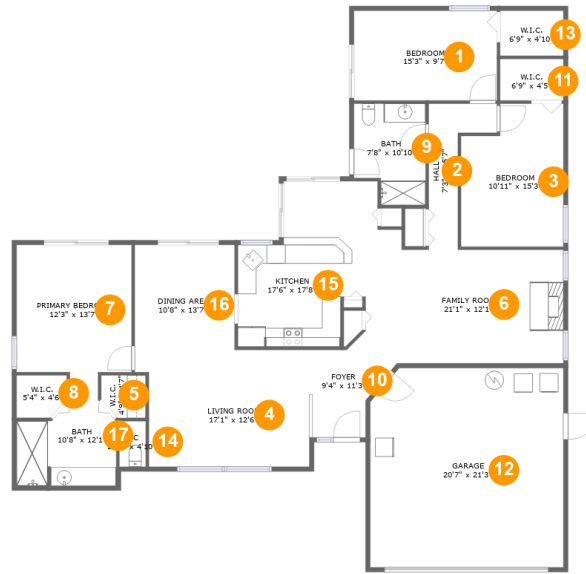


Property Summary

 **1** garages  **3** bedrooms  **2** bathrooms  **0** half baths

 **1** floors  **1,874** Gross Living Area sqft  **2,335** total sqft

**19532 Midway Boulevard, Port Charlotte,
Charlotte County, Florida, United States, 33948**



Room Dimensions

Floor 1

Total sqft: 2335

Living area: 1874

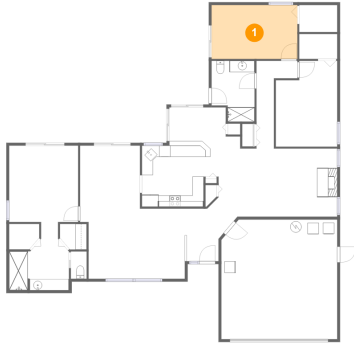
#	Room name	Dimensions	Area (sqft)	Counted as Living Area
1	Bedroom	15'3" x 9'7"	146 sq. ft	Yes
2	Hall	7'3" x 15'7"	61 sq. ft	Yes
3	Bedroom	10'11" x 15'3"	152 sq. ft	Yes
4	Living Room	17'1" x 12'6"	203 sq. ft	Yes
5	W.i.c.	4'9" x 4'7"	20 sq. ft	Yes
6	Family Room	21'1" x 12'1"	240 sq. ft	Yes
7	Primary Bedroom	12'3" x 13'7"	167 sq. ft	Yes
8	W.i.c.	5'4" x 4'6"	22 sq. ft	Yes
9	Bath	7'8" x 10'10"	74 sq. ft	Yes
10	Foyer	9'4" x 11'3"	70 sq. ft	Yes
11	W.i.c.	6'9" x 4'5"	30 sq. ft	Yes

**19532 Midway Boulevard, Port Charlotte,
Charlotte County, Florida, United States, 33948**

#	Room name	Dimensions	Area (sqft)	Counted as Living Area
12	Garage	20'7" x 21'3"	432 sq. ft	No
13	W.i.c.	6'9" x 4'10"	32 sq. ft	Yes
14	Wc	2'10" x 4'10"	14 sq. ft	Yes
15	Kitchen	17'6" x 17'8"	218 sq. ft	Yes
16	Dining Area	10'8" x 13'7"	134 sq. ft	Yes
17	Bath	10'8" x 12'1"	93 sq. ft	Yes

19532 Midway Boulevard, Port Charlotte, Charlotte County, Florida, United States, 33948

1 Floor 1 - Bedroom



Dimensions: 15'3" x 9'7"
Area: 146 sq. ft
Counted as Living Area:
Yes

Heated: Yes
Finished: Yes
Enclosed: Yes
Contiguous:
Yes
Permitted: Yes
Wet Space: No
Addition: No
Conversion: No

2 Floor 1 - Hall

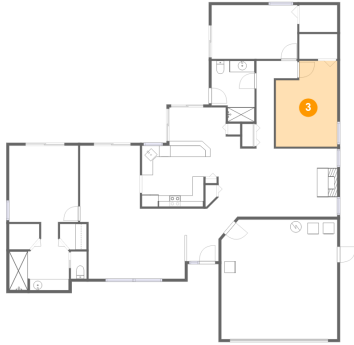


Dimensions: 7'3" x 15'7"
Area: 61 sq. ft
Counted as Living Area:
Yes

Heated: Yes
Finished: Yes
Enclosed: Yes
Contiguous:
Yes
Permitted: Yes
Wet Space: No
Addition: No
Conversion: No

19532 Midway Boulevard, Port Charlotte, Charlotte County, Florida, United States, 33948

3 Floor 1 - Bedroom



Dimensions: 10'11" x 15'3"
Area: 152 sq. ft
Counted as Living Area:
Yes

Heated: Yes
Finished: Yes
Enclosed: Yes
Contiguous:
Yes
Permitted: Yes
Wet Space: No
Addition: No
Conversion: No

4 Floor 1 - Living Room



Dimensions: 17'1" x 12'6"
Area: 203 sq. ft
Counted as Living Area:
Yes

Heated: Yes
Finished: Yes
Enclosed: Yes
Contiguous:
Yes
Permitted: Yes
Wet Space: No
Addition: No
Conversion: No

5 Floor 1 - W.i.c.

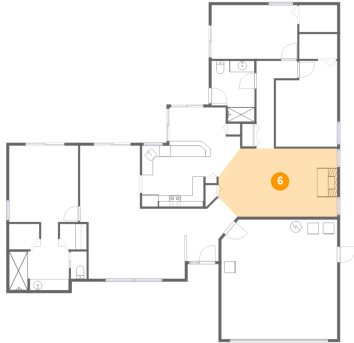


Dimensions: 4'9" x 4'7"
Area: 20 sq. ft
Counted as Living Area:
Yes

Heated: Yes
Finished: Yes
Enclosed: Yes
Contiguous:
Yes
Permitted: Yes
Wet Space: No
Addition: No
Conversion: No

19532 Midway Boulevard, Port Charlotte, Charlotte County, Florida, United States, 33948

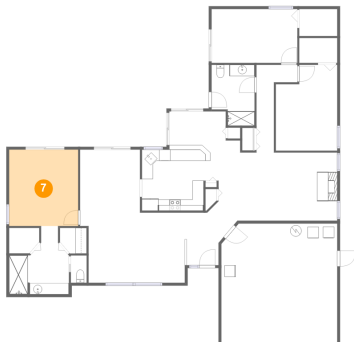
6 Floor 1 - Family Room



Dimensions: 21'1" x 12'1"
Area: 240 sq. ft
Counted as Living Area:
Yes

Heated: Yes
Finished: Yes
Enclosed: Yes
Contiguous:
Yes
Permitted: Yes
Wet Space: No
Addition: No
Conversion: No

7 Floor 1 - Primary Bedroom



Dimensions: 12'3" x 13'7"
Area: 167 sq. ft
Counted as Living Area:
Yes

Heated: Yes
Finished: Yes
Enclosed: Yes
Contiguous:
Yes
Permitted: Yes
Wet Space: No
Addition: No
Conversion: No

8 Floor 1 - W.i.c.

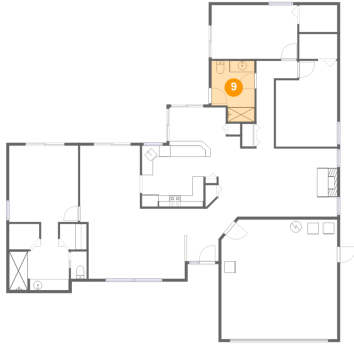


Dimensions: 5'4" x 4'6"
Area: 22 sq. ft
Counted as Living Area:
Yes

Heated: Yes
Finished: Yes
Enclosed: Yes
Contiguous:
Yes
Permitted: Yes
Wet Space: No
Addition: No
Conversion: No

**19532 Midway Boulevard, Port Charlotte,
Charlotte County, Florida, United States, 33948**

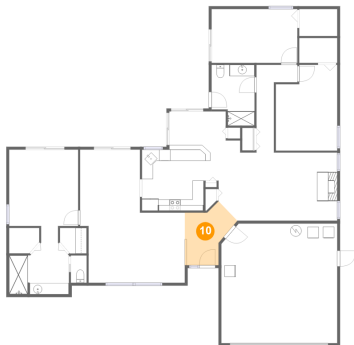
9 Floor 1 - Bath



Dimensions: 7'8" x 10'10"
Area: 74 sq. ft
Counted as Living Area:
Yes

Heated: Yes
Finished: Yes
Enclosed: Yes
Contiguous:
Yes
Permitted: Yes
Wet Space: Yes
Addition: No
Conversion: No

10 Floor 1 - Foyer



Dimensions: 9'4" x 11'3"
Area: 70 sq. ft
Counted as Living Area:
Yes

Heated: Yes
Finished: Yes
Enclosed: Yes
Contiguous:
Yes
Permitted: Yes
Wet Space: No
Addition: No
Conversion: No

11 Floor 1 - W.i.c.

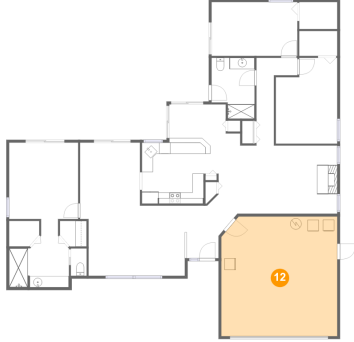


Dimensions: 6'9" x 4'5"
Area: 30 sq. ft
Counted as Living Area:
Yes

Heated: Yes
Finished: Yes
Enclosed: Yes
Contiguous:
Yes
Permitted: Yes
Wet Space: No
Addition: No
Conversion: No

19532 Midway Boulevard, Port Charlotte, Charlotte County, Florida, United States, 33948

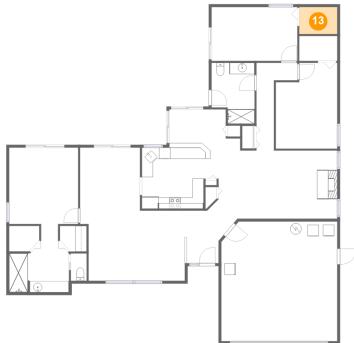
12 Floor 1 - Garage



Dimensions: 20'7" x 21'3"
Area: 432 sq. ft
Counted as Living Area: No

Heated: No
Finished: No
Enclosed: Yes
Contiguous: Yes
Permitted: Yes
Wet Space: No
Addition: No
Conversion: No

13 Floor 1 - W.i.c.



Dimensions: 6'9" x 4'10"
Area: 32 sq. ft
Counted as Living Area:
Yes

Heated: Yes
Finished: Yes
Enclosed: Yes
Contiguous:
Yes
Permitted: Yes
Wet Space: No
Addition: No
Conversion: No

14 Floor 1 - Wc

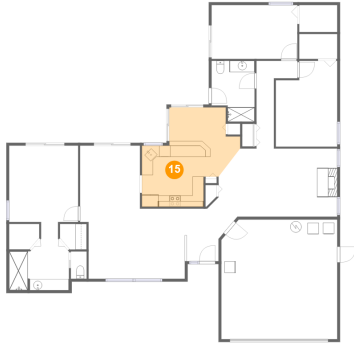


Dimensions: 2'10" x 4'10"
Area: 14 sq. ft
Counted as Living Area:
Yes

Heated: Yes
Finished: Yes
Enclosed: Yes
Contiguous:
Yes
Permitted: Yes
Wet Space: Yes
Addition: No
Conversion: No

19532 Midway Boulevard, Port Charlotte, Charlotte County, Florida, United States, 33948

15 Floor 1 - Kitchen



Dimensions: 17'6" x 17'8"
Area: 218 sq. ft
Counted as Living Area:
Yes

Heated: Yes
Finished: Yes
Enclosed: Yes
Contiguous:
Yes
Permitted: Yes
Wet Space: No
Addition: No
Conversion: No

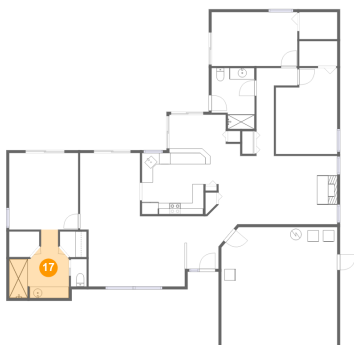
16 Floor 1 - Dining Area



Dimensions: 10'8" x 13'7"
Area: 134 sq. ft
Counted as Living Area:
Yes

Heated: Yes
Finished: Yes
Enclosed: Yes
Contiguous:
Yes
Permitted: Yes
Wet Space: No
Addition: No
Conversion: No

17 Floor 1 - Bath



Dimensions: 10'8" x 12'1"
Area: 93 sq. ft
Counted as Living Area:
Yes

Heated: Yes
Finished: Yes
Enclosed: Yes
Contiguous:
Yes
Permitted: Yes
Wet Space: Yes
Addition: No
Conversion: No