



4 CLAIRLEA CRESCENT



Lainey Bonsell & Teresita Link

LTHOME.ca

Bringing your dreams home.

ROYAL LEPAGE
Estate Realty
MEMBER
BROKERAGE INDEPENDENTLY OWNED AND OPERATED



For more information on

4 CLAIRLEA CRESCENT



Details: The perfect 3+1 bedroom family home on Clairlea. Fully renovated top to bottom with great attention to detail & tons of built-in storage. Private drive and large green backyard on a family friendly street walking distance to Clairlea park. Features main floor principal suite with built-in closets, 3-piece ensuite and walk out to deck with hot tub. 2nd floor features two spacious bedrooms and bonus flex area, plus full bath. Complete with fully finished high basement which includes, a family room, separate office space and bedroom, plus laundry & bath.

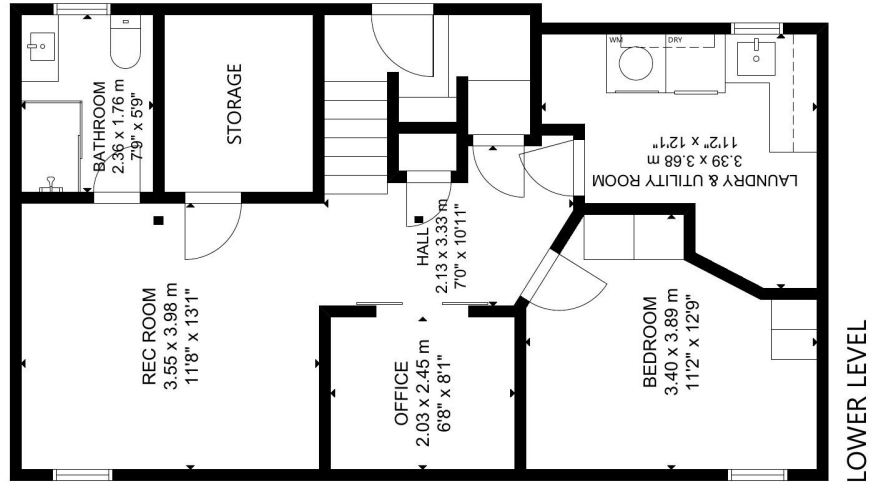
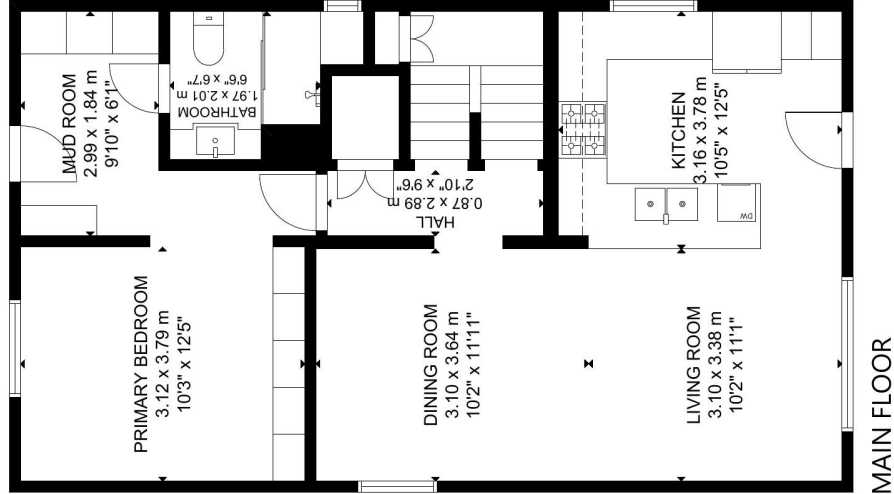
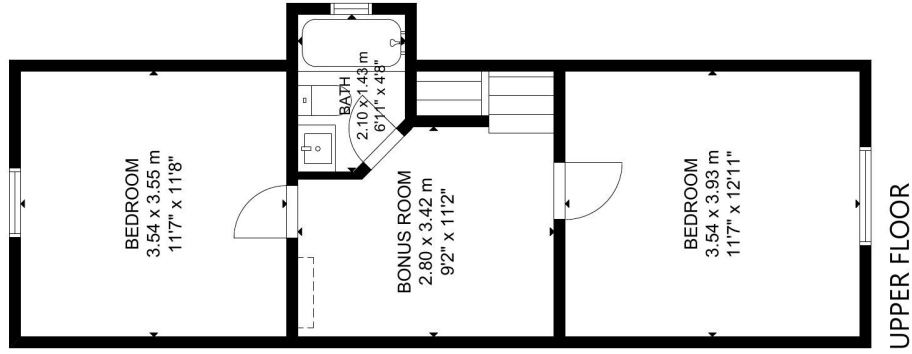


Visit

www.LTHome.ca



4 Clairlea Crescent



GROSS INTERNAL AREA
 MAIN FLOOR: 69 m²/738 sq ft, UPPER FLOOR: 41 m²/440 sq ft
 LOWER LEVEL: 63 m²/682 sq ft
 TOTAL: 173 m²/1,864 sq ft
 SIZE AND DIMENSIONS ARE APPROXIMATE, ACTUAL MAY VARY.

Not intended to solicit buyers or sellers currently under contract with another Brokerage



Lainey Bonsell & Teresita Link

LTHOME.ca

Bringing your dreams home.

Presented by:

Lainey Bonsell, Broker

Royal LePage Estate Realty, Brokerage

Lainey@LTHome.ca

416-690-5100