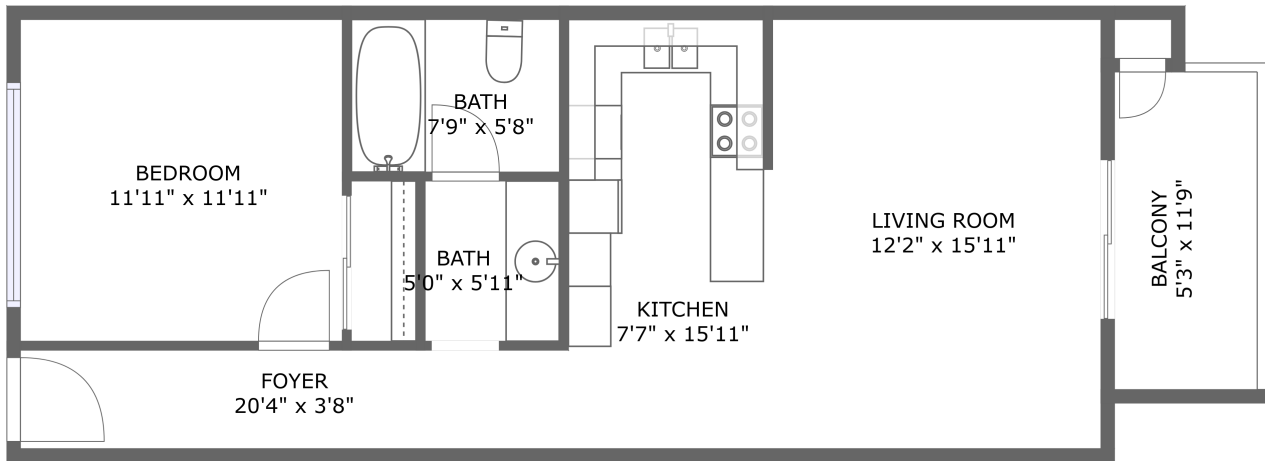


**2611 Solano Road, Pismo Beach, California 93449,  
United States, 204**



FLOOR 1

## Property summary

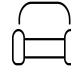
 **0** Garages


 **1** Bedrooms

 **1** Bathrooms

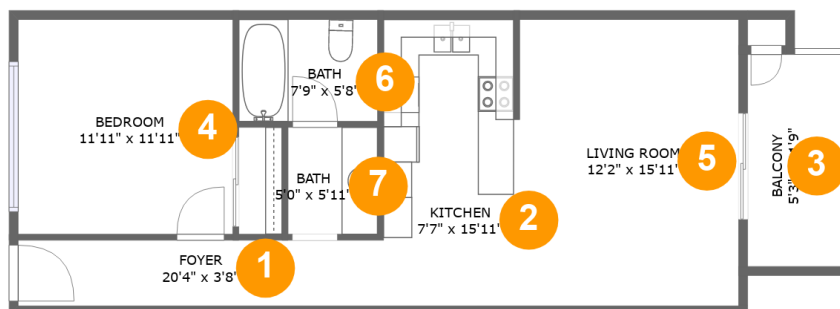
 **0** Half baths

 **1** Floors

 **638**  
Gross living  
area sqft

 **703**  
Total sqft

2611 Solano Road, Pismo Beach, California 93449,  
United States, 204



## Room dimensions

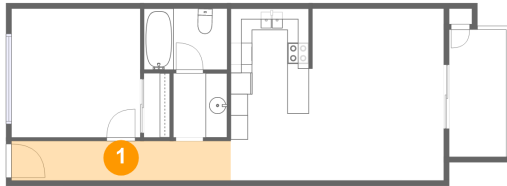
Floor 1

Total sqft: 703 Living area: 638

#		Dimensions	sqft	Counted as living area
1	Foyer	20'4" x 3'8"	74 sq. ft	Yes
2	Kitchen	7'7" x 15'11"	119 sq. ft	Yes
3	Balcony	5'3" x 11'9"	62 sq. ft	No
4	Bedroom	11'11" x 11'11"	142 sq. ft	Yes
5	Living Room	12'2" x 15'11"	194 sq. ft	Yes
6	Bath	7'9" x 5'8"	44 sq. ft	Yes
7	Bath	5'0" x 5'11"	30 sq. ft	Yes

2611 Solano Road, Pismo Beach, California 93449,  
United States, 204

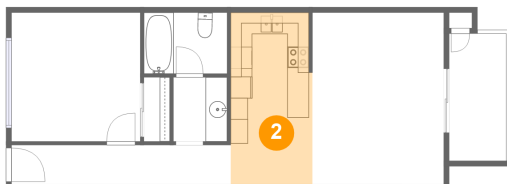
## 1 Floor 1 - Foyer



Dimensions: 20'4" x 3'8"  
Area: 74 sq. ft  
Counted as living area: Yes

Heated: Yes  
Finished: Yes  
Enclosed: Yes  
Contiguous: Yes  
Permitted: Yes  
Wet space: No  
Addition: No  
Conversion: No

## 2 Floor 1 - Kitchen

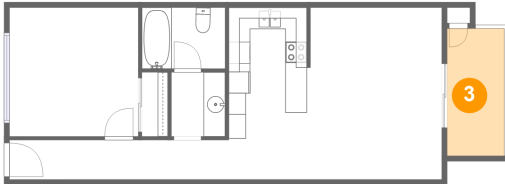


Dimensions: 7'7" x 15'11"  
Area: 119 sq. ft  
Counted as living area: Yes

Heated: Yes  
Finished: Yes  
Enclosed: Yes  
Contiguous: Yes  
Permitted: Yes  
Wet space: No  
Addition: No  
Conversion: No

2611 Solano Road, Pismo Beach, California 93449,  
United States, 204

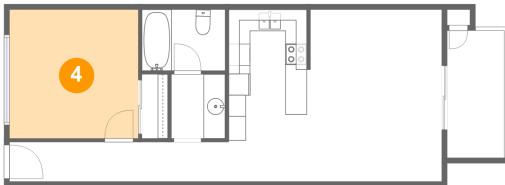
### 3 Floor 1 - Balcony



Dimensions: 5'3" x 11'9"  
Area: 62 sq. ft  
Counted as living area: No

Heated: No  
Finished: Yes  
Enclosed: No  
Contiguous: Yes  
Permitted: Yes  
Wet space: No  
Addition: No  
Conversion: No

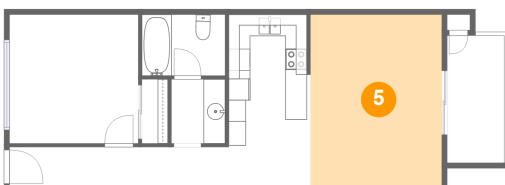
### 4 Floor 1 - Bedroom



Dimensions: 11'11" x 11'11"  
Area: 142 sq. ft  
Counted as living area: Yes

Heated: Yes  
Finished: Yes  
Enclosed: Yes  
Contiguous: Yes  
Permitted: Yes  
Wet space: No  
Addition: No  
Conversion: No

### 5 Floor 1 - Living Room



Dimensions: 12'2" x 15'11"  
Area: 194 sq. ft  
Counted as living area: Yes

Heated: Yes  
Finished: Yes  
Enclosed: Yes  
Contiguous: Yes  
Permitted: Yes  
Wet space: No  
Addition: No  
Conversion: No

2611 Solano Road, Pismo Beach, California 93449,  
United States, 204

## 6 Floor 1 - Bath



Dimensions: 7'9" x 5'8"  
Area: 44 sq. ft  
Counted as living area: Yes

Heated: Yes  
Finished: Yes  
Enclosed: Yes  
Contiguous: Yes  
Permitted: Yes  
Wet space: Yes  
Addition: No  
Conversion: No

## 7 Floor 1 - Bath



Dimensions: 5'0" x 5'11"  
Area: 30 sq. ft  
Counted as living area: Yes

Heated: Yes  
Finished: Yes  
Enclosed: Yes  
Contiguous: Yes  
Permitted: Yes  
Wet space: Yes  
Addition: No  
Conversion: No