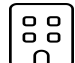




1264 Keffield Street, Ardmore, Hollins, Roanoke County, Virginia, United States, 24019

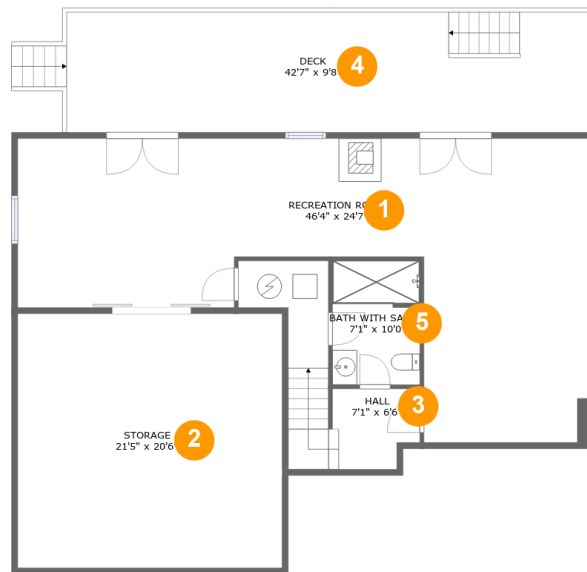


Property Summary

 **1** garages
  **4** bedrooms
  **3** bathrooms
  **1** half baths

 **3** floors
  **3,415** Gross Living Area sqft
  **5,154** total sqft

1264 Keffield Street, Ardmore, Hollins, Roanoke County, Virginia, United States, 24019



Room Dimensions

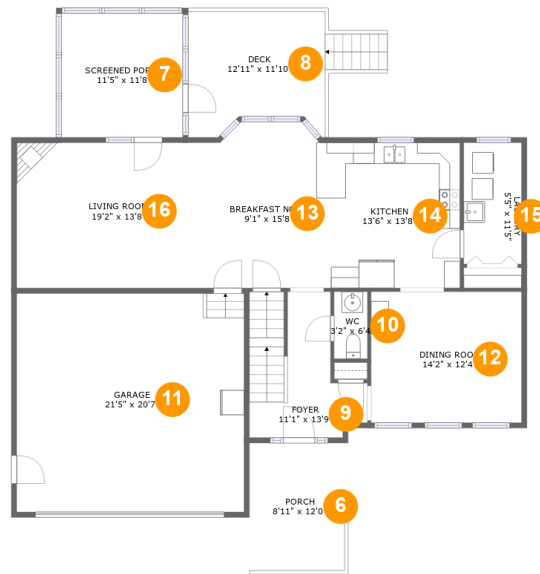
Floor 1

Total sqft: 1874

Living area: 995

#	Room name	Dimensions	Area (sqft)	Counted as Living Area
1	Recreation Room	46'4" x 24'7"	715 sq. ft	Yes
2	Storage	21'5" x 20'6"	440 sq. ft	No
3	Hall	7'1" x 6'6"	113 sq. ft	Yes
4	Deck	42'7" x 9'8"	414 sq. ft	No
5	Bath With Sauna	7'1" x 10'0"	70 sq. ft	Yes

1264 Keffield Street, Ardmore, Hollins, Roanoke County, Virginia, United States, 24019



Room Dimensions

Floor 2

Total sqft: 1939

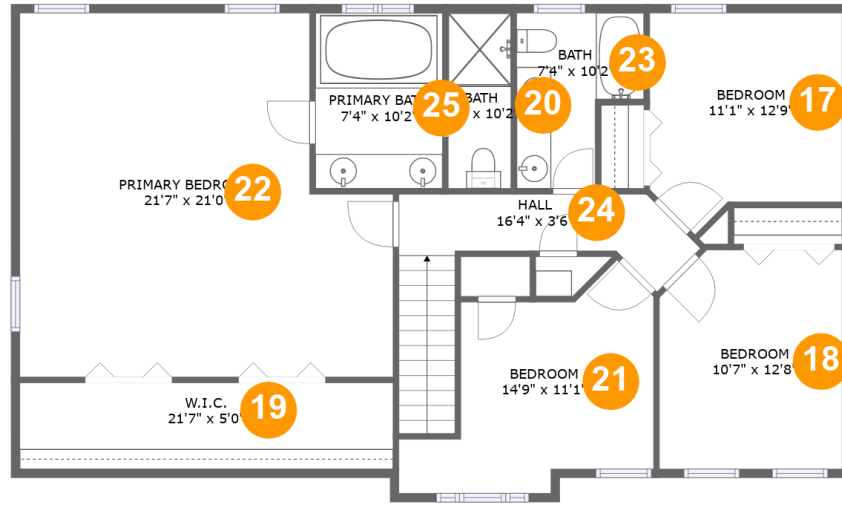
Living area: 1079

#	Room name	Dimensions	Area (sqft)	Counted as Living Area
6	Porch	8'11" x 12'0"	107 sq. ft	No
7	Screened Porch	11'5" x 11'8"	133 sq. ft	No
8	Deck	12'11" x 11'10"	137 sq. ft	No
9	Foyer	11'1" x 13'9"	117 sq. ft	Yes
10	Wc	3'2" x 6'4"	20 sq. ft	Yes
11	Garage	21'5" x 20'7"	440 sq. ft	No
12	Dining Room	14'2" x 12'4"	175 sq. ft	Yes
13	Breakfast Nook	9'1" x 15'8"	139 sq. ft	Yes
14	Kitchen	13'6" x 13'8"	185 sq. ft	Yes
15	Laundry	5'5" x 11'5"	62 sq. ft	Yes
16	Living Room	19'2" x 13'8"	262 sq. ft	Yes

Scan captured on Tue, 20 Aug 2024 20:14:58 GMT

Information is calculated by CubiCasa technology; deemed highly reliable but not guaranteed.

1264 Keffield Street, Ardmore, Hollins, Roanoke County, Virginia, United States, 24019



Room Dimensions

Floor 3

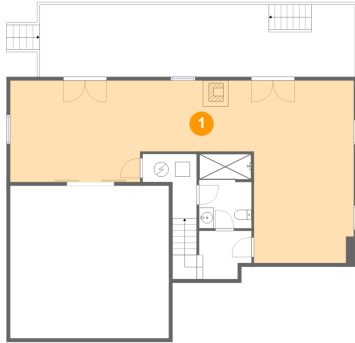
Total sqft: 1341

Living area: 1341

#	Room name	Dimensions	Area (sqft)	Counted as Living Area
17	Bedroom	11'1" x 12'9"	125 sq. ft	Yes
18	Bedroom	10'7" x 12'8"	130 sq. ft	Yes
19	W.i.c.	21'7" x 5'0"	107 sq. ft	Yes
20	Bath	3'7" x 10'2"	37 sq. ft	Yes
21	Bedroom	14'9" x 11'1"	132 sq. ft	Yes
22	Primary Bedroom	21'7" x 21'0"	403 sq. ft	Yes
23	Bath	7'4" x 10'2"	60 sq. ft	Yes
24	Hall	16'4" x 3'6"	92 sq. ft	Yes
25	Primary Bath	7'4" x 10'2"	74 sq. ft	Yes

1264 Keffield Street, Ardmore, Hollins, Roanoke County, Virginia, United States, 24019

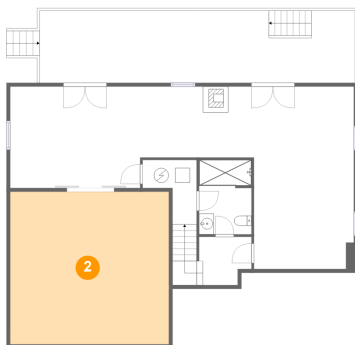
1 Floor 1 - Recreation Room



Dimensions: 46'4" x 24'7"
Area: 715 sq. ft
Counted as Living Area:
Yes

Heated: Yes
Finished: Yes
Enclosed: Yes
Contiguous:
Yes
Permitted: Yes
Wet Space: No
Addition: No
Conversion: No

2 Floor 1 - Storage

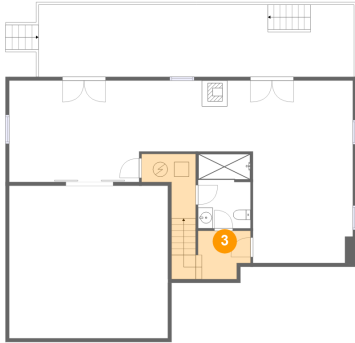


Dimensions: 21'5" x 20'6"
Area: 440 sq. ft
Counted as Living Area: No

Heated: No
Finished: No
Enclosed: No
Contiguous: No
Permitted: Yes
Wet Space: No
Addition: No
Conversion: No

1264 Keffield Street, Ardmore, Hollins, Roanoke County, Virginia, United States, 24019

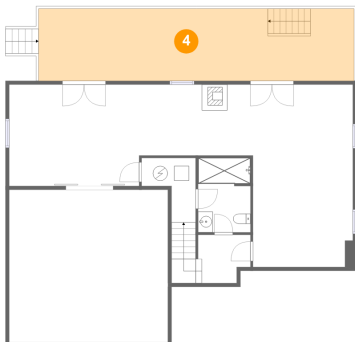
3 Floor 1 - Hall



Dimensions: 7'1" x 6'6"
Area: 113 sq. ft
Counted as Living Area:
Yes

Heated: Yes
Finished: Yes
Enclosed: Yes
Contiguous:
Yes
Permitted: Yes
Wet Space: No
Addition: No
Conversion: No

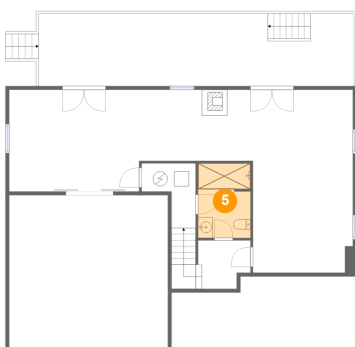
4 Floor 1 - Deck



Dimensions: 42'7" x 9'8"
Area: 414 sq. ft
Counted as Living Area: No

Heated: No
Finished: Yes
Enclosed: No
Contiguous: Yes
Permitted: Yes
Wet Space: No
Addition: No
Conversion: No

5 Floor 1 - Bath With Sauna



Dimensions: 7'1" x 10'0"
Area: 70 sq. ft
Counted as Living Area:
Yes

Heated: Yes
Finished: Yes
Enclosed: Yes
Contiguous:
Yes
Permitted: Yes
Wet Space: Yes
Addition: No
Conversion: No

1264 Keffield Street, Ardmore, Hollins, Roanoke County, Virginia, United States, 24019

6 Floor 2 - Porch



Dimensions: 8'11" x 12'0"
Area: 107 sq. ft
Counted as Living Area: No

Heated: No
Finished: Yes
Enclosed: No
Contiguous: Yes
Permitted: Yes
Wet Space: No
Addition: No
Conversion: No

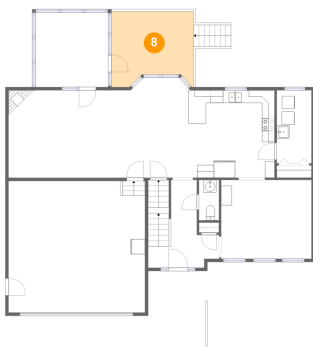
7 Floor 2 - Screened Porch



Dimensions: 11'5" x 11'8"
Area: 133 sq. ft
Counted as Living Area: No

Heated: No
Finished: Yes
Enclosed: No
Contiguous: Yes
Permitted: Yes
Wet Space: No
Addition: No
Conversion: No

8 Floor 2 - Deck



Dimensions: 12'11" x 11'10"
Area: 137 sq. ft
Counted as Living Area: No

Heated: No
Finished: Yes
Enclosed: No
Contiguous: Yes
Permitted: Yes
Wet Space: No
Addition: No
Conversion: No

1264 Keffield Street, Ardmore, Hollins, Roanoke County, Virginia, United States, 24019

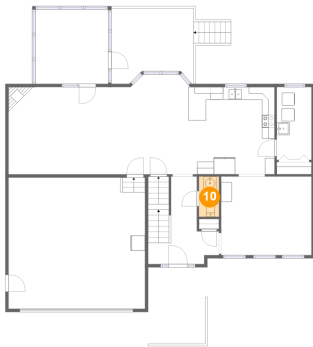
9 Floor 2 - Foyer



Dimensions: 11'1" x 13'9"
Area: 117 sq. ft
Counted as Living Area:
Yes

Heated: Yes
Finished: Yes
Enclosed: Yes
Contiguous:
Yes
Permitted: Yes
Wet Space: No
Addition: No
Conversion: No

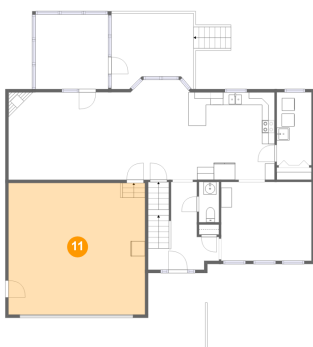
10 Floor 2 - Wc



Dimensions: 3'2" x 6'4"
Area: 20 sq. ft
Counted as Living Area:
Yes

Heated: Yes
Finished: Yes
Enclosed: Yes
Contiguous:
Yes
Permitted: Yes
Wet Space: Yes
Addition: No
Conversion: No

11 Floor 2 - Garage

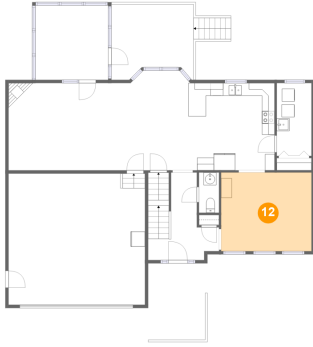


Dimensions: 21'5" x 20'7"
Area: 440 sq. ft
Counted as Living Area: No

Heated: No
Finished: No
Enclosed: Yes
Contiguous: Yes
Permitted: Yes
Wet Space: No
Addition: No
Conversion: No

1264 Keffield Street, Ardmore, Hollins, Roanoke County, Virginia, United States, 24019

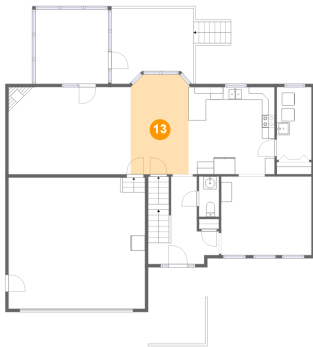
12 Floor 2 - Dining Room



Dimensions: 14'2" x 12'4"
Area: 175 sq. ft
Counted as Living Area:
Yes

Heated: Yes
Finished: Yes
Enclosed: Yes
Contiguous:
Yes
Permitted: Yes
Wet Space: No
Addition: No
Conversion: No

13 Floor 2 - Breakfast Nook



Dimensions: 9'1" x 15'8"
Area: 139 sq. ft
Counted as Living Area:
Yes

Heated: Yes
Finished: Yes
Enclosed: Yes
Contiguous:
Yes
Permitted: Yes
Wet Space: No
Addition: No
Conversion: No

14 Floor 2 - Kitchen



Dimensions: 13'6" x 13'8"
Area: 185 sq. ft
Counted as Living Area:
Yes

Heated: Yes
Finished: Yes
Enclosed: Yes
Contiguous:
Yes
Permitted: Yes
Wet Space: No
Addition: No
Conversion: No

1264 Keffield Street, Ardmore, Hollins, Roanoke County, Virginia, United States, 24019

15 Floor 2 - Laundry



Dimensions: 5'5" x 11'5"
Area: 62 sq. ft
Counted as Living Area:
Yes

Heated: Yes
Finished: Yes
Enclosed: Yes
Contiguous:
Yes
Permitted: Yes
Wet Space: No
Addition: No
Conversion: No

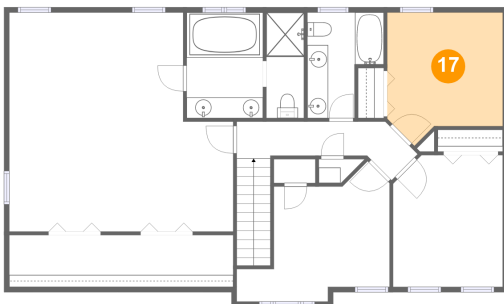
16 Floor 2 - Living Room



Dimensions: 19'2" x 13'8"
Area: 262 sq. ft
Counted as Living Area:
Yes

Heated: Yes
Finished: Yes
Enclosed: Yes
Contiguous:
Yes
Permitted: Yes
Wet Space: No
Addition: No
Conversion: No

17 Floor 3 - Bedroom

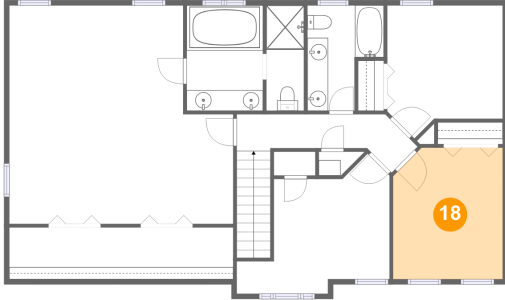


Dimensions: 11'1" x 12'9"
Area: 125 sq. ft
Counted as Living Area:
Yes

Heated: Yes
Finished: Yes
Enclosed: Yes
Contiguous:
Yes
Permitted: Yes
Wet Space: No
Addition: No
Conversion: No

1264 Keffield Street, Ardmore, Hollins, Roanoke County, Virginia, United States, 24019

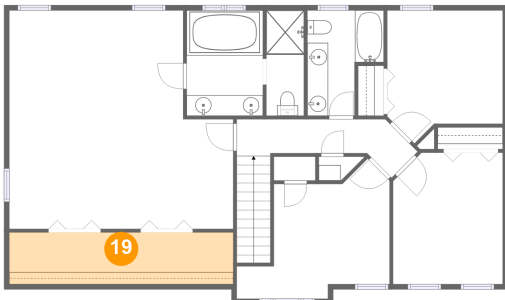
18 Floor 3 - Bedroom



Dimensions: 10'7" x 12'8"
Area: 130 sq. ft
Counted as Living Area:
Yes

Heated: Yes
Finished: Yes
Enclosed: Yes
Contiguous:
Yes
Permitted: Yes
Wet Space: No
Addition: No
Conversion: No

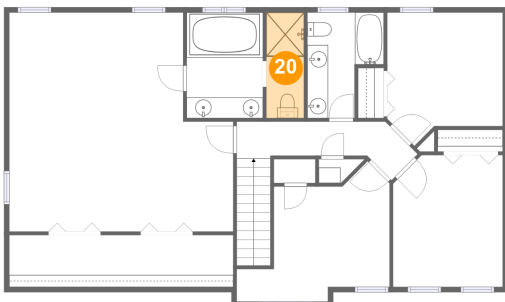
19 Floor 3 - W.i.c.



Dimensions: 21'7" x 5'0"
Area: 107 sq. ft
Counted as Living Area:
Yes

Heated: Yes
Finished: Yes
Enclosed: Yes
Contiguous:
Yes
Permitted: Yes
Wet Space: No
Addition: No
Conversion: No

20 Floor 3 - Bath

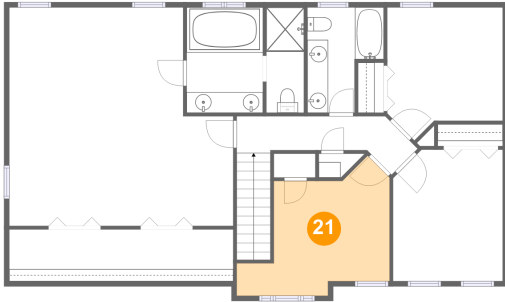


Dimensions: 3'7" x 10'2"
Area: 37 sq. ft
Counted as Living Area:
Yes

Heated: Yes
Finished: Yes
Enclosed: Yes
Contiguous:
Yes
Permitted: Yes
Wet Space: Yes
Addition: No
Conversion: No

1264 Keffield Street, Ardmore, Hollins, Roanoke County, Virginia, United States, 24019

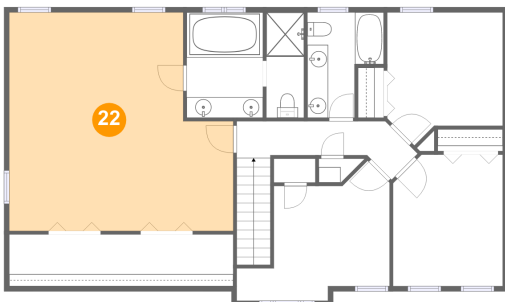
21 Floor 3 - Bedroom



Dimensions: 14'9" x 11'1"
Area: 132 sq. ft
Counted as Living Area:
Yes

Heated: Yes
Finished: Yes
Enclosed: Yes
Contiguous:
Yes
Permitted: Yes
Wet Space: No
Addition: No
Conversion: No

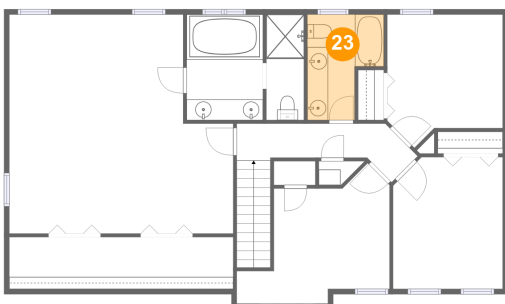
22 Floor 3 - Primary Bedroom



Dimensions: 21'7" x 21'0"
Area: 403 sq. ft
Counted as Living Area:
Yes

Heated: Yes
Finished: Yes
Enclosed: Yes
Contiguous:
Yes
Permitted: Yes
Wet Space: No
Addition: No
Conversion: No

23 Floor 3 - Bath

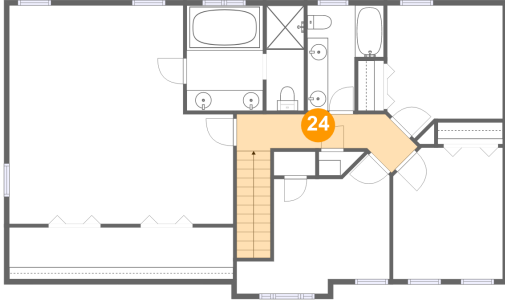


Dimensions: 7'4" x 10'2"
Area: 60 sq. ft
Counted as Living Area:
Yes

Heated: Yes
Finished: Yes
Enclosed: Yes
Contiguous:
Yes
Permitted: Yes
Wet Space: Yes
Addition: No
Conversion: No

1264 Keffield Street, Ardmore, Hollins, Roanoke County, Virginia, United States, 24019

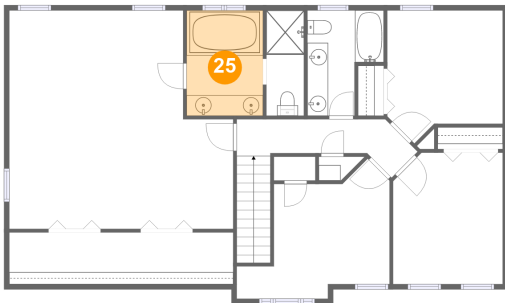
24 Floor 3 - Hall



Dimensions: 16'4" x 3'6"
Area: 92 sq. ft
Counted as Living Area:
Yes

Heated: Yes
Finished: Yes
Enclosed: Yes
Contiguous:
Yes
Permitted: Yes
Wet Space: No
Addition: No
Conversion: No

25 Floor 3 - Primary Bath



Dimensions: 7'4" x 10'2"
Area: 74 sq. ft
Counted as Living Area:
Yes

Heated: Yes
Finished: Yes
Enclosed: Yes
Contiguous:
Yes
Permitted: Yes
Wet Space: Yes
Addition: No
Conversion: No