

Home data report

13 Ferncliff Terrace, Glen Ridge, Essex County, New Jersey, United States, 07028



Total Area: 4007 sq. ft

Below Ground: 749 sq. ft, 1st Floor: 1218 sq. ft, 2nd Floor: 1218 sq. ft, 3rd Floor: 822 sq. ft

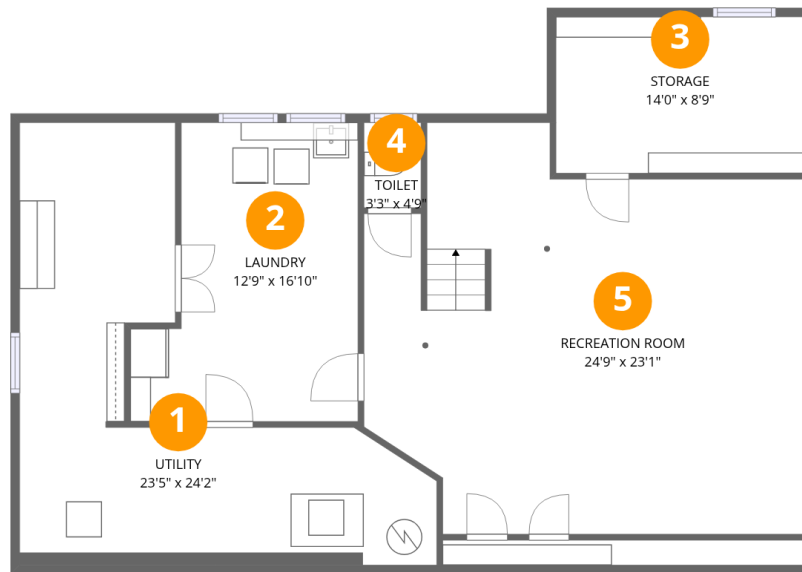
Excluded: Utility 414 sq. ft, Storage 123 sq. ft, Porch 71 sq. ft, Patio 750 sq. ft, Fireplace 11 sq. ft, Attic 24 sq. ft, Low ceiling 35 sq. ft, Walls: 304 sq. ft

Property summary



Home data report

13 Ferncliff Terrace, Glen Ridge, Essex County, New Jersey, United States, 07028



Room dimensions

Floor 1 Below grade

Total:749sqft

Excluded: 431sqft

#		Dimensions	sqft	Counted as living area
1	Utility	23'5" x 24'2"	307 sq. ft	No
2	Laundry	12'9" x 16'10"	182 sq. ft	Yes
3	Storage	14'0" x 8'9"	123 sq. ft	No
4	Toilet	3'3" x 4'9"	15 sq. ft	Yes
5	Recreation Room	24'9" x 23'1"	487 sq. ft	Yes

Home data report

**13 Ferncliff Terrace, Glen Ridge, Essex County, New Jersey,
United States, 07028**



Room dimensions

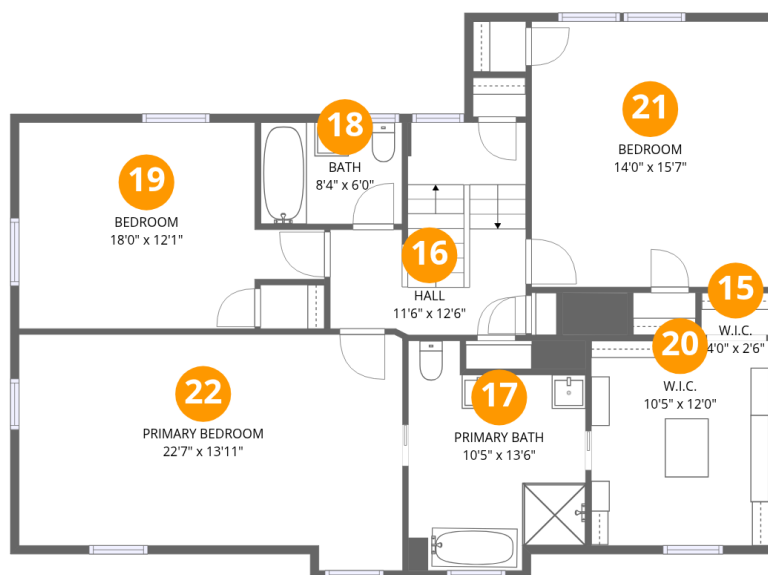
Floor 2

Total:1218sqft Excluded: 832sqft

#		Dimensions	sqft	Counted as living area
6	Foyer	6'11" x 14'0"	127 sq. ft	Yes
7	Kitchen	12'0" x 15'10"	200 sq. ft	Yes
8	Hall	0'4" x 0'6"	53 sq. ft	Yes
9	P/R	5'2" x 5'7"	24 sq. ft	Yes
10	Patio	39'10" x 20'1"	750 sq. ft	No
11	Porch	12'7" x 5'7"	71 sq. ft	No
12	Dining Room	15'10" x 14'7"	219 sq. ft	Yes
13	Living Room	13'6" x 24'10"	344 sq. ft	Yes
14	Sun Room	8'9" x 24'10"	218 sq. ft	Yes

Home data report

13 Ferncliff Terrace, Glen Ridge, Essex County, New Jersey, United States, 07028



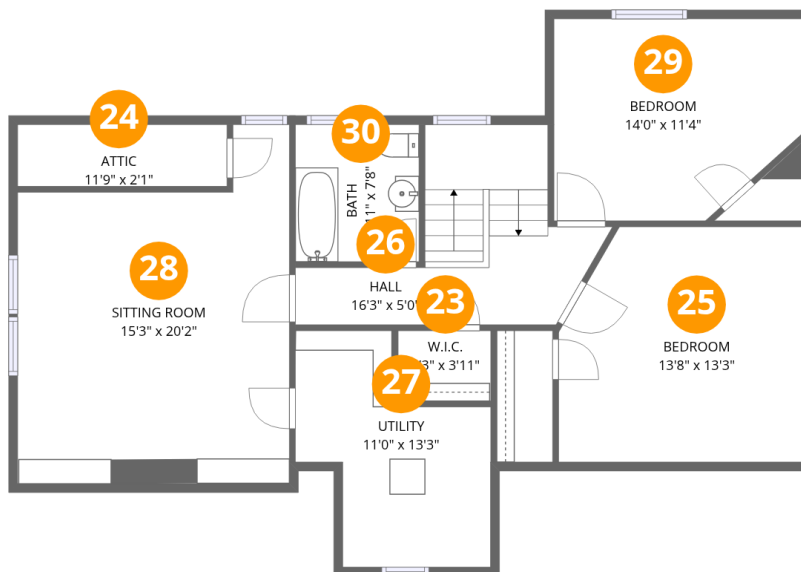
Room dimensions

Floor 3

Total:1218sqft Excluded: 0sqft

#		Dimensions	sqft	Counted as living area
15	W.I.C.	4'0" x 2'6"	10 sq. ft	Yes
16	Hall	11'6" x 12'6"	113 sq. ft	Yes
17	Primary Bath	10'5" x 13'6"	121 sq. ft	Yes
18	Bath	8'4" x 6'0"	50 sq. ft	Yes
19	Bedroom	18'0" x 12'1"	180 sq. ft	Yes
20	W.I.C.	10'5" x 12'0"	126 sq. ft	Yes
21	Bedroom	14'0" x 15'7"	218 sq. ft	Yes
22	Primary Bedroom	22'7" x 13'11"	287 sq. ft	Yes

13 Ferncliff Terrace, Glen Ridge, Essex County, New Jersey, United States, 07028



Room dimensions

Floor 4

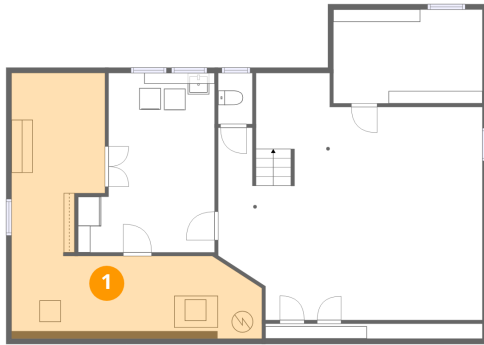
Total:822sqft

Excluded: 165sqft

#		Dimensions	sqft	Counted as living area
23	W.I.C.	5'3" x 3'11"	21 sq. ft	Yes
24	Attic	11'9" x 2'1"	24 sq. ft	No
25	Bedroom	13'8" x 13'3"	171 sq. ft	Yes
26	Hall	16'3" x 5'0"	113 sq. ft	Yes
27	Utility	11'0" x 13'3"	106 sq. ft	No
28	Sitting Room	15'3" x 20'2"	262 sq. ft	Yes
29	Bedroom	14'0" x 11'4"	126 sq. ft	Yes
30	Bath	6'11" x 7'8"	54 sq. ft	Yes

**13 Ferncliff Terrace, Glen Ridge, Essex County, New Jersey,
United States, 07028**

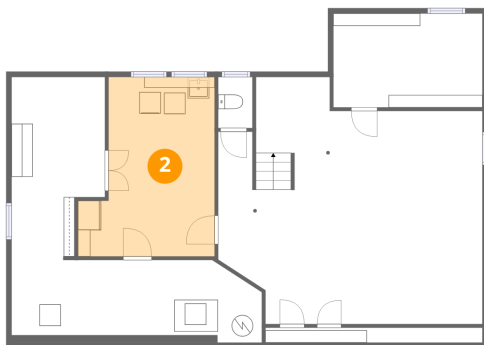
1 Floor 1 - Utility



Dimensions: 23'5" x 24'2"
Area: 307 sq. ft
Counted as living area: No

Heated: Yes
Finished: No
Enclosed: Yes
Contiguous: Yes
Permitted: Yes
Wet space: No
Addition: No
Conversion: No

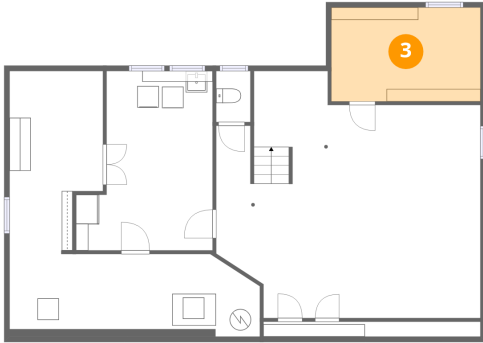
2 Floor 1 - Laundry



Dimensions: 12'9" x 16'10"
Area: 182 sq. ft
Counted as living area: Yes

Heated: Yes
Finished: Yes
Enclosed: Yes
Contiguous: Yes
Permitted: Yes
Wet space: No
Addition: No
Conversion: No

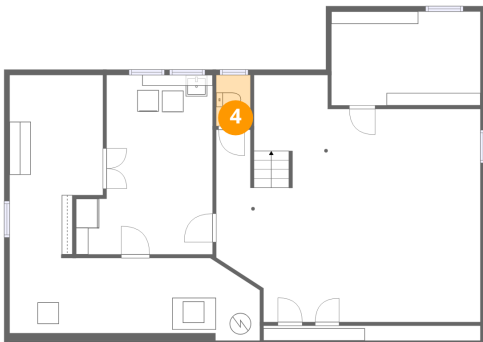
3 Floor 1 - Storage



Dimensions: 14'0" x 8'9"
Area: 123 sq. ft
Counted as living area: No

Heated: No
Finished: No
Enclosed: No
Contiguous: Yes
Permitted: Yes
Wet space: No
Addition: No
Conversion: No

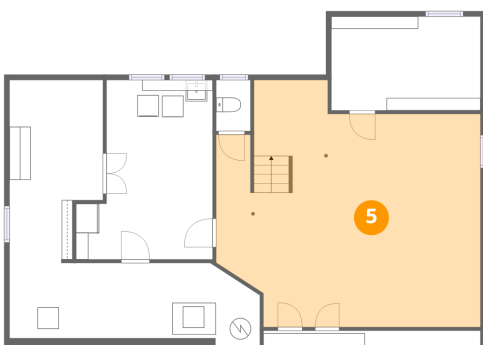
4 Floor 1 - Toilet



Dimensions: 3'3" x 4'9"
Area: 15 sq. ft
Counted as living area: Yes

Heated: Yes
Finished: Yes
Enclosed: Yes
Contiguous: Yes
Permitted: Yes
Wet space: No
Addition: No
Conversion: No

5 Floor 1 - Recreation Room



Dimensions: 24'9" x 23'1"
Area: 487 sq. ft
Counted as living area: Yes

Heated: Yes
Finished: Yes
Enclosed: Yes
Contiguous: Yes
Permitted: Yes
Wet space: No
Addition: No
Conversion: No

13 Ferncliff Terrace, Glen Ridge, Essex County, New Jersey,
United States, 07028

6 Floor 2 - Foyer



Dimensions: 6'11" x 14'0"
Area: 127 sq. ft
Counted as living area: Yes

Heated: Yes
Finished: Yes
Enclosed: Yes
Contiguous: Yes
Permitted: Yes
Wet space: No
Addition: No
Conversion: No

7 Floor 2 - Kitchen



Dimensions: 12'0" x 15'10"
Area: 200 sq. ft
Counted as living area: Yes

Heated: Yes
Finished: Yes
Enclosed: Yes
Contiguous: Yes
Permitted: Yes
Wet space: No
Addition: No
Conversion: No

8 Floor 2 - Hall



Dimensions: 0'4" x 0'6"
Area: 53 sq. ft
Counted as living area: Yes

Heated: Yes
Finished: Yes
Enclosed: Yes
Contiguous: Yes
Permitted: Yes
Wet space: No
Addition: No
Conversion: No

13 Ferncliff Terrace, Glen Ridge, Essex County, New Jersey,
United States, 07028

9 Floor 2 - P/R



Dimensions: 5'2" x 5'7"
Area: 24 sq. ft
Counted as living area: Yes

Heated: Yes
Finished: Yes
Enclosed: Yes
Contiguous: Yes
Permitted: Yes
Wet space: Yes
Addition: No
Conversion: No

10 Floor 2 - Patio



Dimensions: 39'10" x 20'1"
Area: 750 sq. ft
Counted as living area: No

Heated: No
Finished: No
Enclosed: No
Contiguous: Yes
Permitted: Yes
Wet space: No
Addition: No
Conversion: No

11 Floor 2 - Porch



Dimensions: 12'7" x 5'7"
Area: 71 sq. ft
Counted as living area: No

Heated: No
Finished: No
Enclosed: No
Contiguous: Yes
Permitted: Yes
Wet space: No
Addition: No
Conversion: No

13 Ferncliff Terrace, Glen Ridge, Essex County, New Jersey,
United States, 07028

12 Floor 2 - Dining Room



Dimensions: 15'10" x 14'7"
Area: 219 sq. ft
Counted as living area: Yes

Heated: Yes
Finished: Yes
Enclosed: Yes
Contiguous: Yes
Permitted: Yes
Wet space: No
Addition: No
Conversion: No

13 Floor 2 - Living Room



Dimensions: 13'6" x 24'10"
Area: 344 sq. ft
Counted as living area: Yes

Heated: Yes
Finished: Yes
Enclosed: Yes
Contiguous: Yes
Permitted: Yes
Wet space: No
Addition: No
Conversion: No

14 Floor 2 - Sun Room

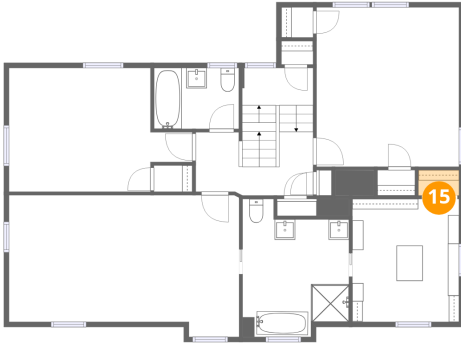


Dimensions: 8'9" x 24'10"
Area: 218 sq. ft
Counted as living area: Yes

Heated: Yes
Finished: Yes
Enclosed: Yes
Contiguous: Yes
Permitted: Yes
Wet space: No
Addition: No
Conversion: No

13 Ferncliff Terrace, Glen Ridge, Essex County, New Jersey,
United States, 07028

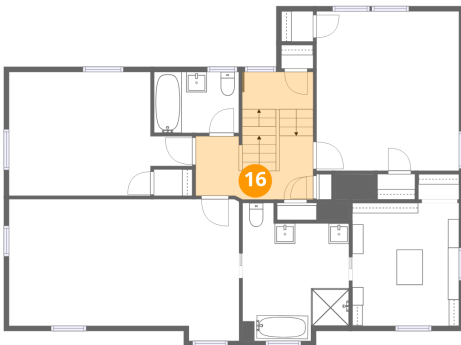
15 Floor 3 - W.I.C.



Dimensions: 4'0" x 2'6"
Area: 10 sq. ft
Counted as living area: Yes

Heated: Yes
Finished: Yes
Enclosed: Yes
Contiguous: Yes
Permitted: Yes
Wet space: No
Addition: No
Conversion: No

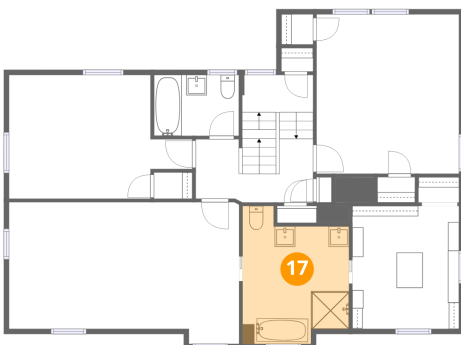
16 Floor 3 - Hall



Dimensions: 11'6" x 12'6"
Area: 113 sq. ft
Counted as living area: Yes

Heated: Yes
Finished: Yes
Enclosed: Yes
Contiguous: Yes
Permitted: Yes
Wet space: No
Addition: No
Conversion: No

17 Floor 3 - Primary Bath

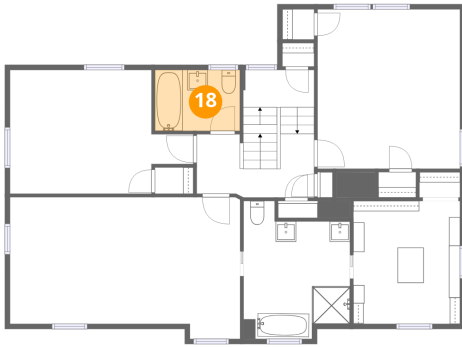


Dimensions: 10'5" x 13'6"
Area: 121 sq. ft
Counted as living area: Yes

Heated: Yes
Finished: Yes
Enclosed: Yes
Contiguous: Yes
Permitted: Yes
Wet space: Yes
Addition: No
Conversion: No

13 Ferncliff Terrace, Glen Ridge, Essex County, New Jersey,
United States, 07028

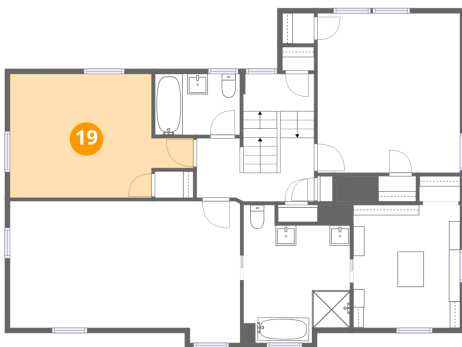
18 Floor 3 - Bath



Dimensions: 8'4" x 6'0"
Area: 50 sq. ft
Counted as living area: Yes

Heated: Yes
Finished: Yes
Enclosed: Yes
Contiguous: Yes
Permitted: Yes
Wet space: Yes
Addition: No
Conversion: No

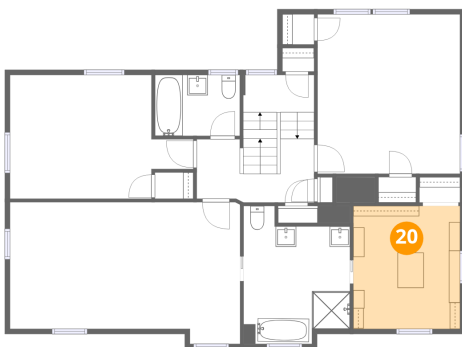
19 Floor 3 - Bedroom



Dimensions: 18'0" x 12'1"
Area: 180 sq. ft
Counted as living area: Yes

Heated: Yes
Finished: Yes
Enclosed: Yes
Contiguous: Yes
Permitted: Yes
Wet space: No
Addition: No
Conversion: No

20 Floor 3 - W.I.C.

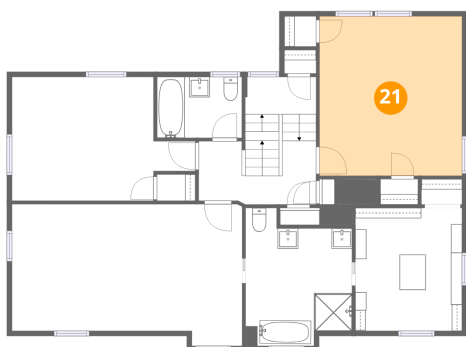


Dimensions: 10'5" x 12'0"
Area: 126 sq. ft
Counted as living area: Yes

Heated: Yes
Finished: Yes
Enclosed: Yes
Contiguous: Yes
Permitted: Yes
Wet space: No
Addition: No
Conversion: No

13 Ferncliff Terrace, Glen Ridge, Essex County, New Jersey,
United States, 07028

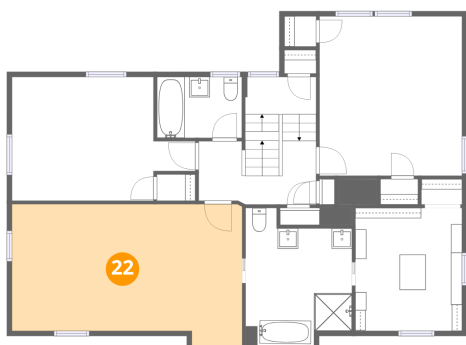
21 Floor 3 - Bedroom



Dimensions: 14'0" x 15'7"
Area: 218 sq. ft
Counted as living area: Yes

Heated: Yes
Finished: Yes
Enclosed: Yes
Contiguous: Yes
Permitted: Yes
Wet space: No
Addition: No
Conversion: No

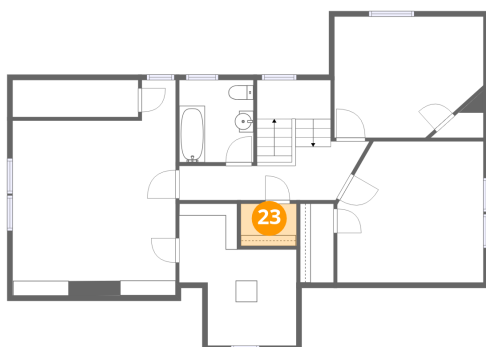
22 Floor 3 - Primary Bedroom



Dimensions: 22'7" x 13'11"
Area: 287 sq. ft
Counted as living area: Yes

Heated: Yes
Finished: Yes
Enclosed: Yes
Contiguous: Yes
Permitted: Yes
Wet space: No
Addition: No
Conversion: No

23 Floor 4 - W.I.C.

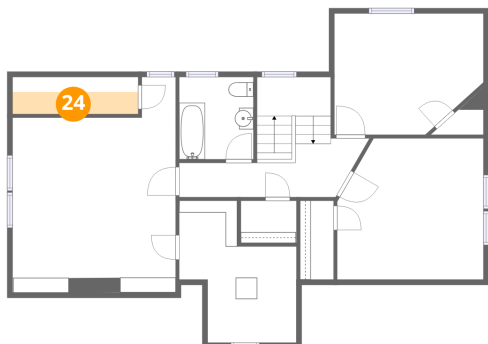


Dimensions: 5'3" x 3'11"
Area: 21 sq. ft
Counted as living area: Yes

Heated: Yes
Finished: Yes
Enclosed: Yes
Contiguous: Yes
Permitted: Yes
Wet space: No
Addition: No
Conversion: No

13 Ferncliff Terrace, Glen Ridge, Essex County, New Jersey,
United States, 07028

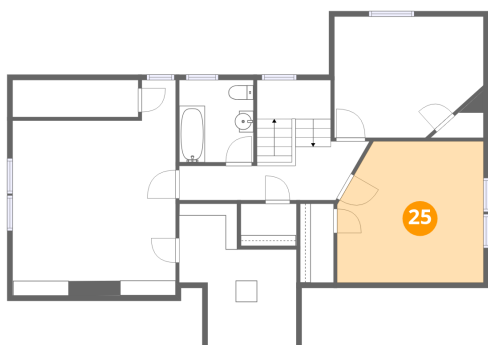
24 Floor 4 - Attic



Dimensions: 11'9" x 2'1"
Area: 24 sq. ft
Counted as living area: No

Heated: No
Finished: No
Enclosed: Yes
Contiguous: Yes
Permitted: Yes
Wet space: No
Addition: No
Conversion: No

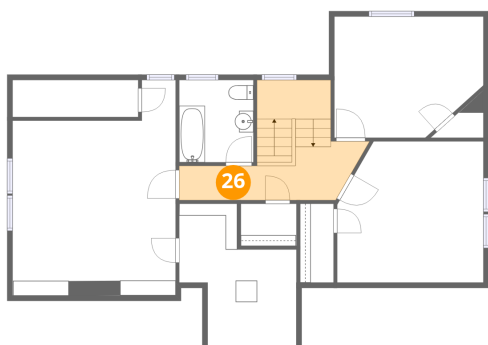
25 Floor 4 - Bedroom



Dimensions: 13'8" x 13'3"
Area: 171 sq. ft
Counted as living area: Yes

Heated: Yes
Finished: Yes
Enclosed: Yes
Contiguous: Yes
Permitted: Yes
Wet space: No
Addition: No
Conversion: No

26 Floor 4 - Hall

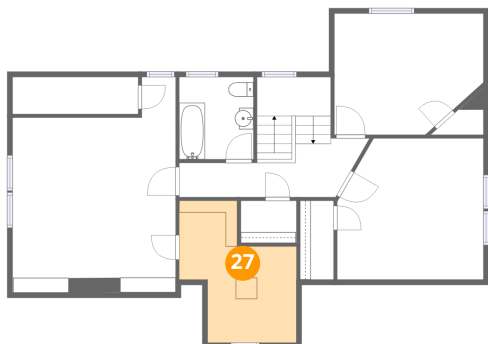


Dimensions: 16'3" x 5'0"
Area: 113 sq. ft
Counted as living area: Yes

Heated: Yes
Finished: Yes
Enclosed: Yes
Contiguous: Yes
Permitted: Yes
Wet space: No
Addition: No
Conversion: No

13 Ferncliff Terrace, Glen Ridge, Essex County, New Jersey,
United States, 07028

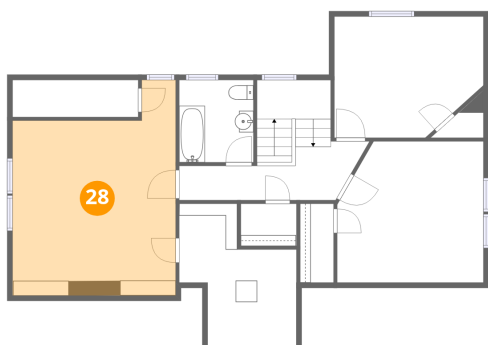
27 Floor 4 - Utility



Dimensions: 11'0" x 13'3"
Area: 106 sq. ft
Counted as living area: No

Heated: Yes
Finished: No
Enclosed: Yes
Contiguous: Yes
Permitted: Yes
Wet space: No
Addition: No
Conversion: No

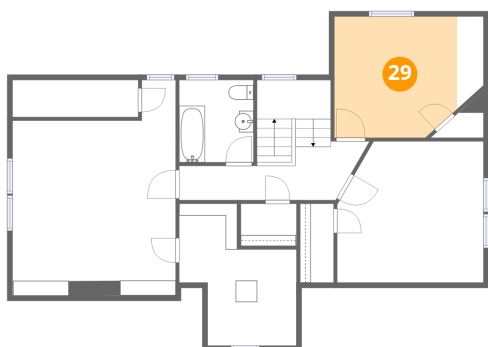
28 Floor 4 - Sitting Room



Dimensions: 15'3" x 20'2"
Area: 262 sq. ft
Counted as living area: Yes

Heated: Yes
Finished: Yes
Enclosed: Yes
Contiguous: Yes
Permitted: Yes
Wet space: No
Addition: No
Conversion: No

29 Floor 4 - Bedroom



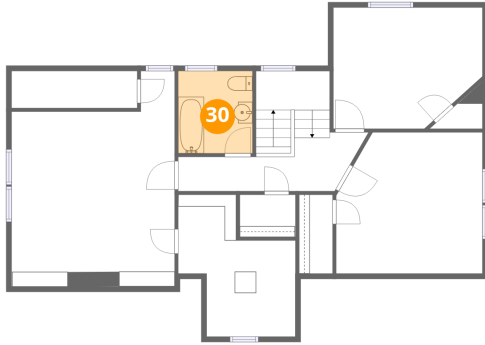
Dimensions: 14'0" x 11'4"
Area: 126 sq. ft
Counted as living area: Yes

Heated: Yes
Finished: Yes
Enclosed: Yes
Contiguous: Yes
Permitted: Yes
Wet space: No
Addition: No
Conversion: No

Home data report

**13 Ferncliff Terrace, Glen Ridge, Essex County, New Jersey,
United States, 07028**

30 Floor 4 - Bath



Dimensions: 6'11" x 7'8"
Area: 54 sq. ft
Counted as living area: Yes

Heated: Yes
Finished: Yes
Enclosed: Yes
Contiguous: Yes
Permitted: Yes
Wet space: Yes
Addition: No
Conversion: No