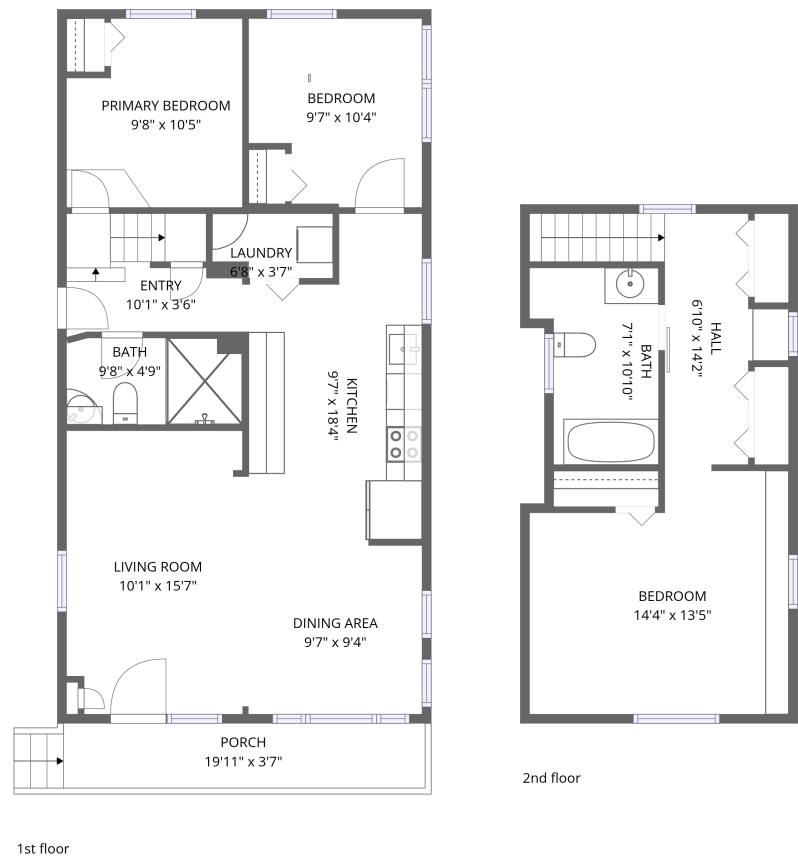


Home data report

134 Chestnut St, Factoryville, PA, US



Total Area: 983 sq. ft
1st Floor: 753 sq. ft, 2nd Floor: 230 sq. ft
Excluded: Porch 71 sq. ft, Low ceiling 152 sq. ft, Walls: 101 sq. ft

Property summary

**2**
Floors

**3**
Bedrooms

**1**
Bathrooms

**1**
Half baths

Home data report

134 Chestnut St,Factoryville,PA,US



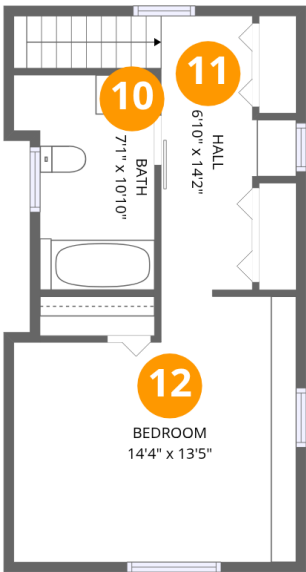
Room dimensions

Floor 1 Total:753sqft Excluded: 71sqft

#		Dimensions	sqft	Counted as living area
1	Dining Area	9'7" x 9'4"	89 sq. ft	Yes
2	Bedroom	9'7" x 10'4"	91 sq. ft	Yes
3	Laundry	6'8" x 3'7"	22 sq. ft	Yes
4	Entry	10'1" x 3'6"	57 sq. ft	Yes
5	Living Room	10'1" x 15'7"	154 sq. ft	Yes
6	Porch	19'11" x 3'7"	71 sq. ft	No
7	Primary Bedroom	9'8" x 10'5"	93 sq. ft	Yes
8	Kitchen	9'7" x 18'4"	155 sq. ft	Yes
9	Bath	9'8" x 4'9"	46 sq. ft	Yes

Home data report

134 Chestnut St,Factoryville,PA,US



Room dimensions

Floor 2 Total:230sqft Excluded: 152sqft

#		Dimensions	sqft	Counted as living area
10	Bath	7'1" x 10'10"	35 sq. ft	Yes
11	Hall	6'10" x 14'2"	82 sq. ft	Yes
12	Bedroom	14'4" x 13'5"	98 sq. ft	Yes

1 Floor 1 - Dining Area



Dimensions: 9'7" x 9'4"
Area: 89 sq. ft
Counted as living area: Yes

Heated: Yes
Finished: Yes
Enclosed: Yes
Contiguous: Yes
Permitted: Yes
Wet space: No
Addition: No
Conversion: No

2 Floor 1 - Bedroom



Dimensions: 9'7" x 10'4"
Area: 91 sq. ft
Counted as living area: Yes

Heated: Yes
Finished: Yes
Enclosed: Yes
Contiguous: Yes
Permitted: Yes
Wet space: No
Addition: No
Conversion: No

3 Floor 1 - Laundry



Dimensions: 6'8" x 3'7"
Area: 22 sq. ft
Counted as living area: Yes

Heated: Yes
Finished: Yes
Enclosed: Yes
Contiguous: Yes
Permitted: Yes
Wet space: No
Addition: No
Conversion: No

4 Floor 1 - Entry



Dimensions: 10'1" x 3'6"
Area: 57 sq. ft
Counted as living area: Yes

Heated: Yes
Finished: Yes
Enclosed: Yes
Contiguous: Yes
Permitted: Yes
Wet space: No
Addition: No
Conversion: No

5 Floor 1 - Living Room



Dimensions: 10'1" x 15'7"
Area: 154 sq. ft
Counted as living area: Yes

Heated: Yes
Finished: Yes
Enclosed: Yes
Contiguous: Yes
Permitted: Yes
Wet space: No
Addition: No
Conversion: No

6 Floor 1 - Porch



Dimensions: 19'11" x 3'7"
Area: 71 sq. ft
Counted as living area: No

Heated: No
Finished: No
Enclosed: No
Contiguous: Yes
Permitted: Yes
Wet space: No
Addition: No
Conversion: No

7 Floor 1 - Primary Bedroom



Dimensions: 9'8" x 10'5"
Area: 93 sq. ft
Counted as living area: Yes

Heated: Yes
Finished: Yes
Enclosed: Yes
Contiguous: Yes
Permitted: Yes
Wet space: No
Addition: No
Conversion: No

8 Floor 1 - Kitchen



Dimensions: 9'7" x 18'4"
Area: 155 sq. ft
Counted as living area: Yes

Heated: Yes
Finished: Yes
Enclosed: Yes
Contiguous: Yes
Permitted: Yes
Wet space: No
Addition: No
Conversion: No

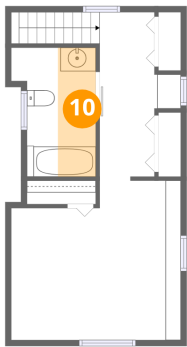
9 Floor 1 - Bath



Dimensions: 9'8" x 4'9"
Area: 46 sq. ft
Counted as living area: Yes

Heated: Yes
Finished: Yes
Enclosed: Yes
Contiguous: Yes
Permitted: Yes
Wet space: Yes
Addition: No
Conversion: No

10 Floor 2 - Bath



Dimensions: 7'1" x 10'10"
Area: 35 sq. ft
Counted as living area: Yes

Heated: Yes
Finished: Yes
Enclosed: Yes
Contiguous: Yes
Permitted: Yes
Wet space: Yes
Addition: No
Conversion: No

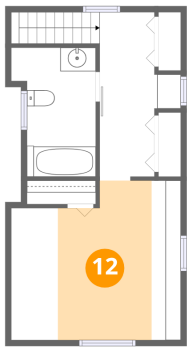
11 Floor 2 - Hall



Dimensions: 6'10" x 14'2"
Area: 82 sq. ft
Counted as living area: Yes

Heated: Yes
Finished: Yes
Enclosed: Yes
Contiguous: Yes
Permitted: Yes
Wet space: No
Addition: No
Conversion: No

12 Floor 2 - Bedroom



Dimensions: 14'4" x 13'5"
Area: 98 sq. ft
Counted as living area: Yes

Heated: Yes
Finished: Yes
Enclosed: Yes
Contiguous: Yes
Permitted: Yes
Wet space: No
Addition: No
Conversion: No