

Home report

2222 West 30th Street, Davenport, Scott County, Iowa, United States, 52804



Total Area: 1959 sq. ft

Below Ground: 465 sq. ft, Floor 2: 862 sq. ft, Floor 3: 632 sq. ft

Excluded: Utility 107 sq. ft, Garage 516 sq. ft, Screened porch 263 sq. ft, Porch 83 sq. ft, Fireplace 13 sq. ft, Walls: 224 sq. ft

Property summary

 **3** Floors

 **2** Bedrooms

 **1** Bathrooms

Home report

2222 West 30th Street, Davenport, Scott County, Iowa, United States, 52804



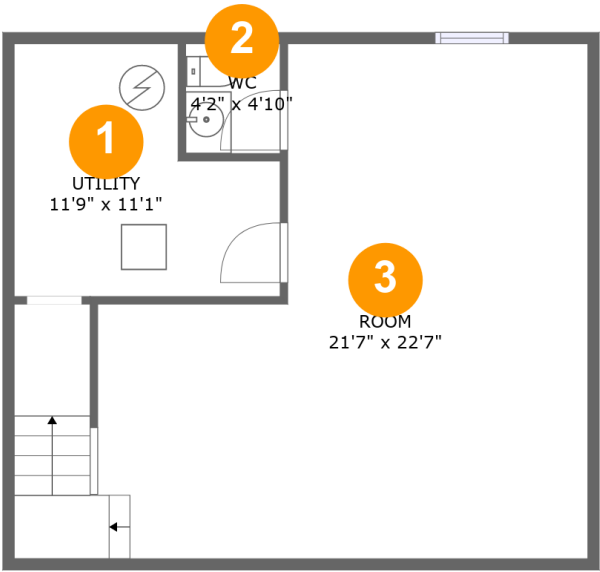
2
Half baths



1
Garages

Home report

2222 West 30th Street, Davenport, Scott County, Iowa, United States, 52804



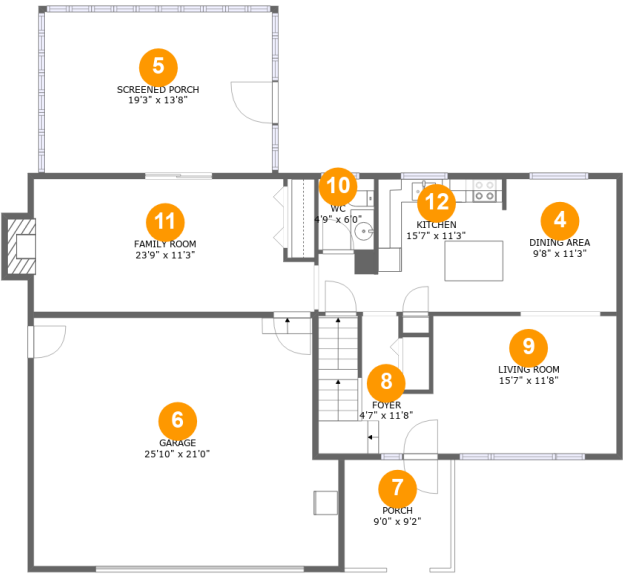
Room dimensions

Floor 1 Below ground Total:465sqft Excluded: 107sqft

#		Max Dimensions	sqft	Included
1	Utility	11'9" x 11'1"	107 sq. ft	No
2	WC	4'2" x 4'10"	20 sq. ft	Yes
3	Room	21'7" x 22'7"	433 sq. ft	Yes

Home report

2222 West 30th Street, Davenport, Scott County, Iowa, United States, 52804



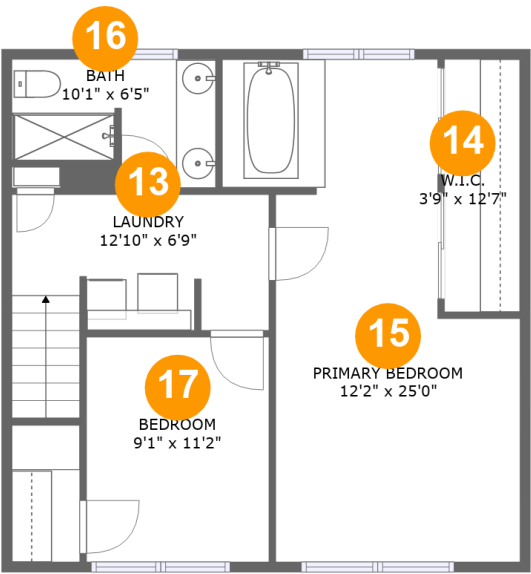
Room dimensions

Floor 2 Total:862sqft Excluded: 875sqft

#		Max Dimensions	sqft	Included
4	Dining Area	9'8" x 11'3"	108 sq. ft	Yes
5	Screened Porch	19'3" x 13'8"	263 sq. ft	No
6	Garage	25'10" x 21'0"	516 sq. ft	No
7	Porch	9'0" x 9'2"	83 sq. ft	No
8	Foyer	4'7" x 11'8"	92 sq. ft	Yes
9	Living Room	15'7" x 11'8"	181 sq. ft	Yes
10	WC	4'9" x 6'0"	28 sq. ft	Yes
11	Family Room	23'9" x 11'3"	260 sq. ft	Yes
12	Kitchen	15'7" x 11'3"	143 sq. ft	Yes

Home report

2222 West 30th Street, Davenport, Scott County, Iowa, United States, 52804



Room dimensions

Floor 3 Total:632sqft Excluded: 0sqft

#		Max Dimensions	sqft	Included
13	Laundry	12'10" x 6'9"	99 sq. ft	Yes
14	W.I.C.	3'9" x 12'7"	47 sq. ft	Yes
15	Primary Bedroom	12'2" x 25'0"	268 sq. ft	Yes
16	Bath	10'1" x 6'5"	56 sq. ft	Yes
17	Bedroom	9'1" x 11'2"	102 sq. ft	Yes

2222 West 30th Street, Davenport, Scott County, Iowa, United States, 52804

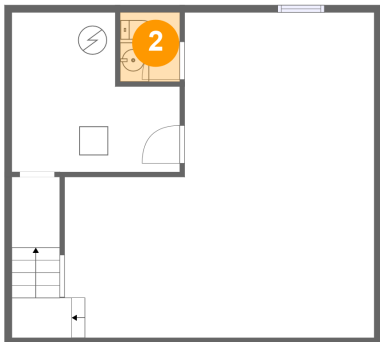
1 Floor 1 - Utility



Max Dimensions: 11'9" x 11'1"
Calculated Area: 107 sq. ft
Included: No

Heated: Yes
Finished: No
Enclosed: Yes
Contiguous: Yes
Permitted: Yes
Wet space: No
Addition: No
Conversion: No

2 Floor 1 - WC

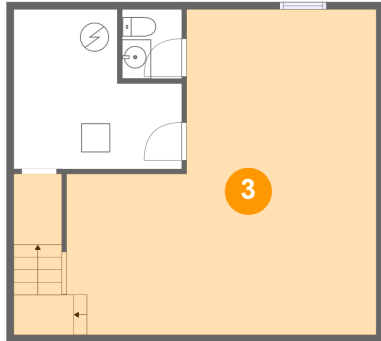


Max Dimensions: 4'2" x 4'10"
Calculated Area: 20 sq. ft
Included: Yes

Heated: Yes
Finished: Yes
Enclosed: Yes
Contiguous: Yes
Permitted: Yes
Wet space: Yes
Addition: No
Conversion: No

2222 West 30th Street, Davenport, Scott County, Iowa, United States, 52804

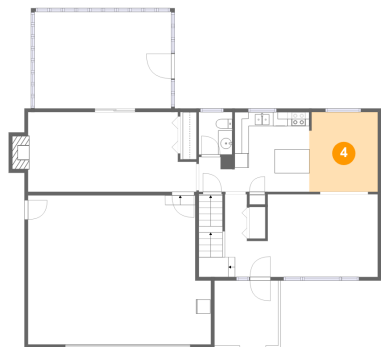
3 Floor 1 - Room



Max Dimensions: 21'7" x 22'7"
Calculated Area: 433 sq. ft
Included: Yes

Heated: Yes
Finished: Yes
Enclosed: Yes
Contiguous: Yes
Permitted: Yes
Wet space: No
Addition: No
Conversion: No

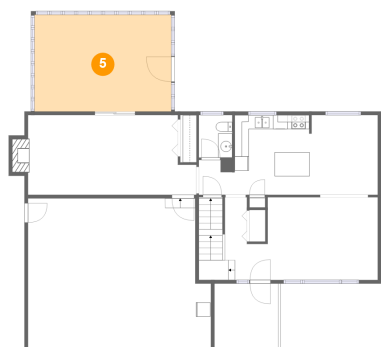
4 Floor 2 - Dining Area



Max Dimensions: 9'8" x 11'3"
Calculated Area: 108 sq. ft
Included: Yes

Heated: Yes
Finished: Yes
Enclosed: Yes
Contiguous: Yes
Permitted: Yes
Wet space: No
Addition: No
Conversion: No

5 Floor 2 - Screened Porch

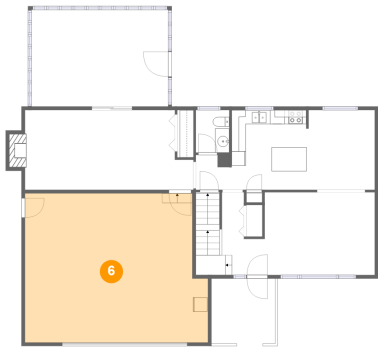


Max Dimensions: 19'3" x 13'8"
Calculated Area: 263 sq. ft
Included: No

Heated: No
Finished: Yes
Enclosed: No
Contiguous: Yes
Permitted: Yes
Wet space: No
Addition: No
Conversion: No

2222 West 30th Street, Davenport, Scott County, Iowa, United States, 52804

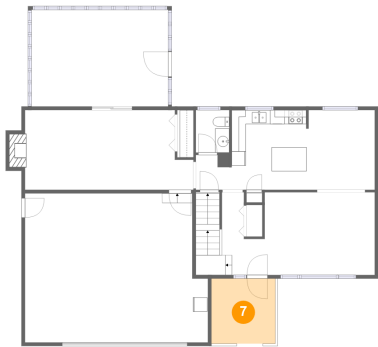
6 Floor 2 - Garage



Max Dimensions: 25'10" x 21'0"
Calculated Area: 516 sq. ft
Included: No

Heated: No
Finished: No
Enclosed: Yes
Contiguous: Yes
Permitted: Yes
Wet space: No
Addition: No
Conversion: No

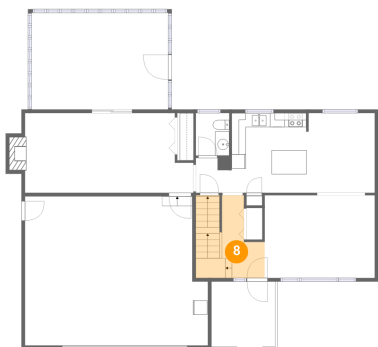
7 Floor 2 - Porch



Max Dimensions: 9'0" x 9'2"
Calculated Area: 83 sq. ft
Included: No

Heated: No
Finished: Yes
Enclosed: No
Contiguous: Yes
Permitted: Yes
Wet space: No
Addition: No
Conversion: No

8 Floor 2 - Foyer

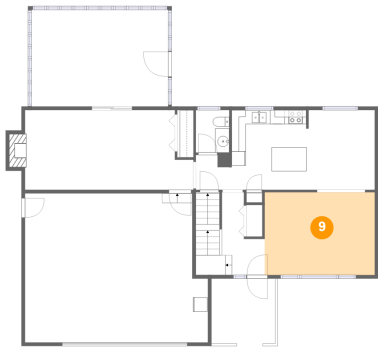


Max Dimensions: 4'7" x 11'8"
Calculated Area: 92 sq. ft
Included: Yes

Heated: Yes
Finished: Yes
Enclosed: Yes
Contiguous: Yes
Permitted: Yes
Wet space: No
Addition: No
Conversion: No

2222 West 30th Street, Davenport, Scott County, Iowa, United States, 52804

9 Floor 2 - Living Room



Max Dimensions: 15'7" x 11'8"
Calculated Area: 181 sq. ft
Included: Yes

Heated: Yes
Finished: Yes
Enclosed: Yes
Contiguous: Yes
Permitted: Yes
Wet space: No
Addition: No
Conversion: No

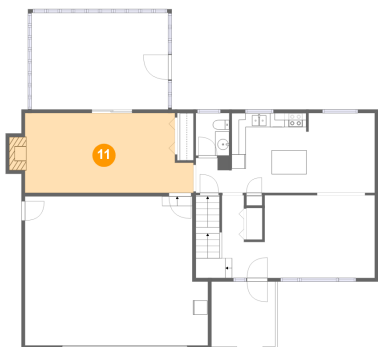
10 Floor 2 - WC



Max Dimensions: 4'9" x 6'0"
Calculated Area: 28 sq. ft
Included: Yes

Heated: Yes
Finished: Yes
Enclosed: Yes
Contiguous: Yes
Permitted: Yes
Wet space: Yes
Addition: No
Conversion: No

11 Floor 2 - Family Room



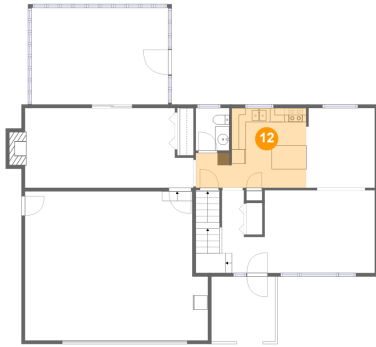
Max Dimensions: 23'9" x 11'3"
Calculated Area: 260 sq. ft
Included: Yes

Heated: Yes
Finished: Yes
Enclosed: Yes
Contiguous: Yes
Permitted: Yes
Wet space: No
Addition: No
Conversion: No

Home report

2222 West 30th Street, Davenport, Scott County, Iowa, United States, 52804

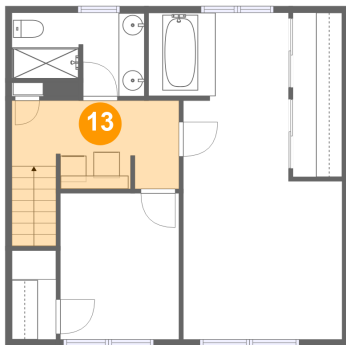
12 Floor 2 - Kitchen



Max Dimensions: 15'7" x 11'3"
Calculated Area: 143 sq. ft
Included: Yes

Heated: Yes
Finished: Yes
Enclosed: Yes
Contiguous: Yes
Permitted: Yes
Wet space: No
Addition: No
Conversion: No

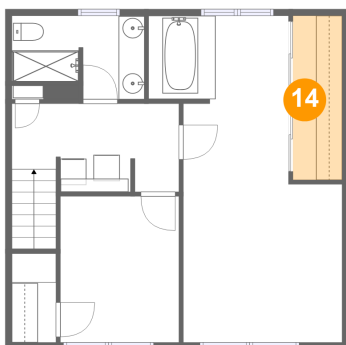
13 Floor 3 - Laundry



Max Dimensions: 12'10" x 6'9"
Calculated Area: 99 sq. ft
Included: Yes

Heated: Yes
Finished: Yes
Enclosed: Yes
Contiguous: Yes
Permitted: Yes
Wet space: No
Addition: No
Conversion: No

14 Floor 3 - W.I.C.

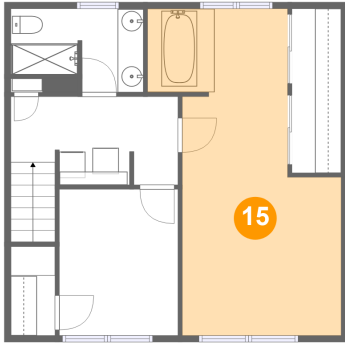


Max Dimensions: 3'9" x 12'7"
Calculated Area: 47 sq. ft
Included: Yes

Heated: Yes
Finished: Yes
Enclosed: Yes
Contiguous: Yes
Permitted: Yes
Wet space: No
Addition: No
Conversion: No

2222 West 30th Street, Davenport, Scott County, Iowa, United States, 52804

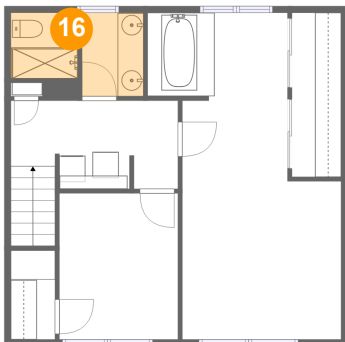
15 Floor 3 - Primary Bedroom



Max Dimensions: 12'2" x 25'0"
Calculated Area: 268 sq. ft
Included: Yes

Heated: Yes
Finished: Yes
Enclosed: Yes
Contiguous: Yes
Permitted: Yes
Wet space: No
Addition: No
Conversion: No

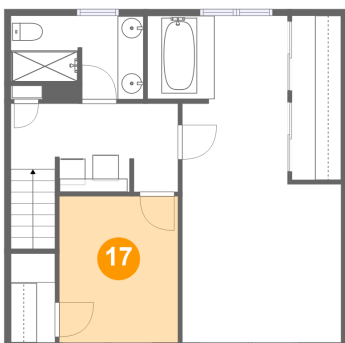
16 Floor 3 - Bath



Max Dimensions: 10'1" x 6'5"
Calculated Area: 56 sq. ft
Included: Yes

Heated: Yes
Finished: Yes
Enclosed: Yes
Contiguous: Yes
Permitted: Yes
Wet space: Yes
Addition: No
Conversion: No

17 Floor 3 - Bedroom



Max Dimensions: 9'1" x 11'2"
Calculated Area: 102 sq. ft
Included: Yes

Heated: Yes
Finished: Yes
Enclosed: Yes
Contiguous: Yes
Permitted: Yes
Wet space: No
Addition: No
Conversion: No