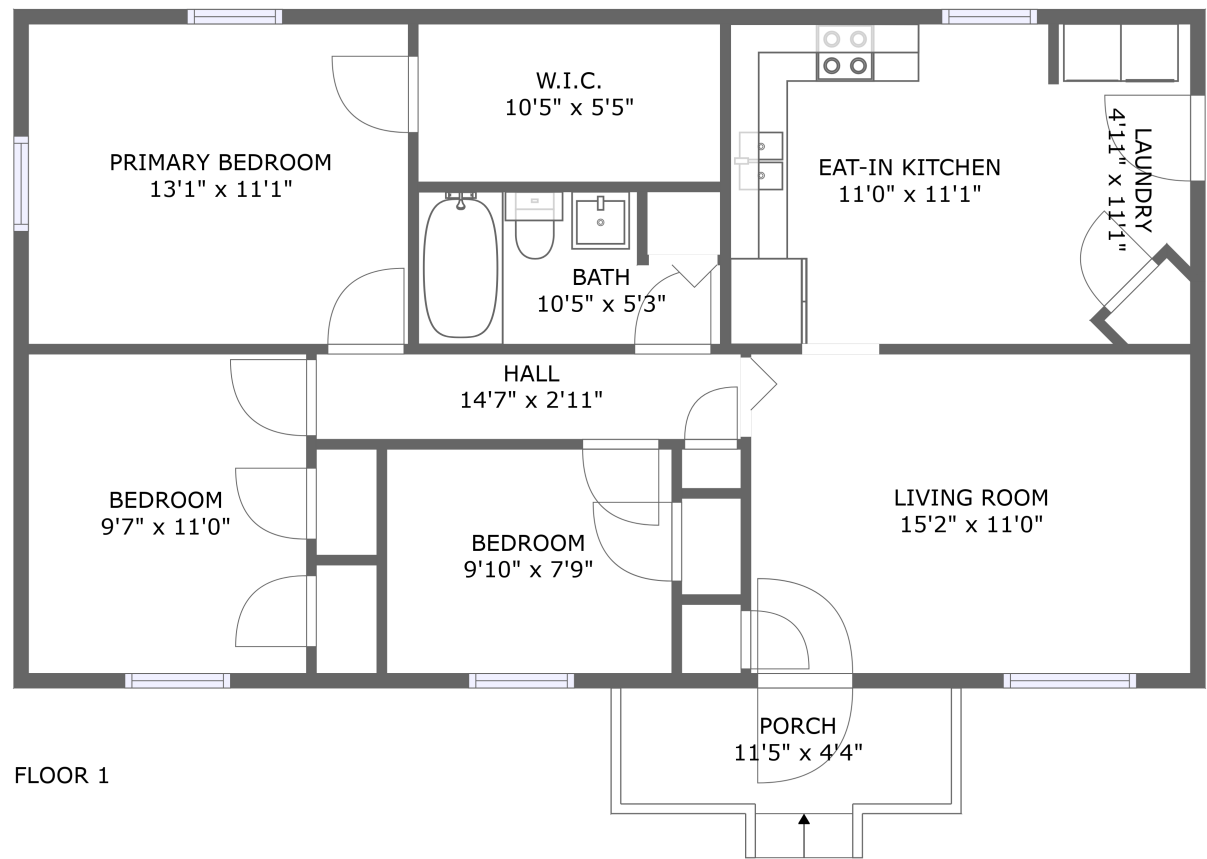


Home report

1130 Deep Woods Road, Hardy, Franklin County, Virginia, United States, 24101



Total GLA: 961 sq. ft

Floor 1: 961 sq. ft
Excluded: Porch 52 sq. ft

Property summary

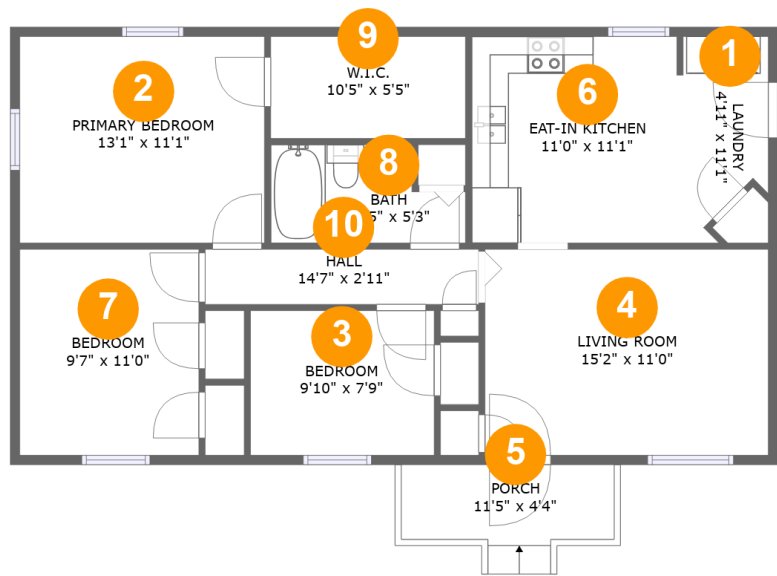
 1 Floors

 3 Bedrooms

 1 Bathrooms

Home report

1130 Deep Woods Road, Hardy, Franklin County, Virginia, United States, 24101



Room dimensions

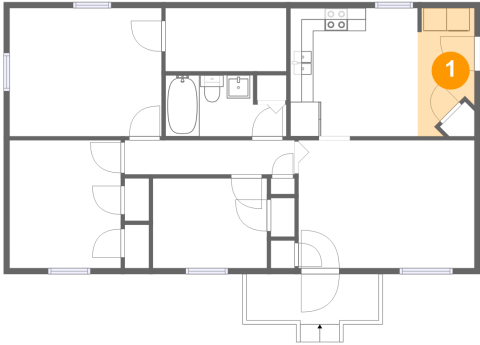
Floor 1

Total:961sqft

Excluded: 52sqft

#		Max Dimensions	sqft	Included
1	Laundry	4'11" x 11'1"	46 sq. ft	Yes
2	Primary Bedroom	13'1" x 11'1"	145 sq. ft	Yes
3	Bedroom	9'10" x 7'9"	76 sq. ft	Yes
4	Living Room	15'2" x 11'0"	167 sq. ft	Yes
5	Porch	11'5" x 4'4"	52 sq. ft	No
6	Eat-in Kitchen	11'0" x 11'1"	121 sq. ft	Yes
7	Bedroom	9'7" x 11'0"	106 sq. ft	Yes
8	Bath	10'5" x 5'3"	48 sq. ft	Yes
9	W.I.C.	10'5" x 5'5"	57 sq. ft	Yes
10	Hall	14'7" x 2'11"	43 sq. ft	Yes

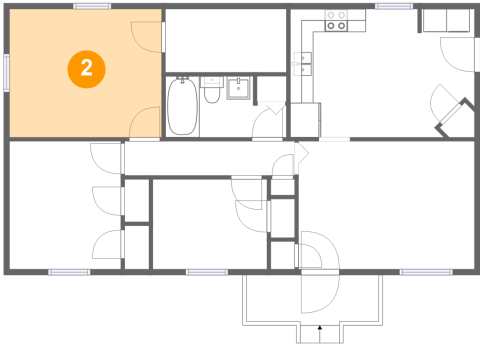
1 Floor 1 - Laundry



Max Dimensions: 4'11" x 11'1"
Calculated Area: 46 sq. ft
Included: Yes

Heated: Yes
Finished: Yes
Enclosed: Yes
Contiguous: Yes
Permitted: Yes
Wet space: No
Addition: No
Conversion: No

2 Floor 1 - Primary Bedroom



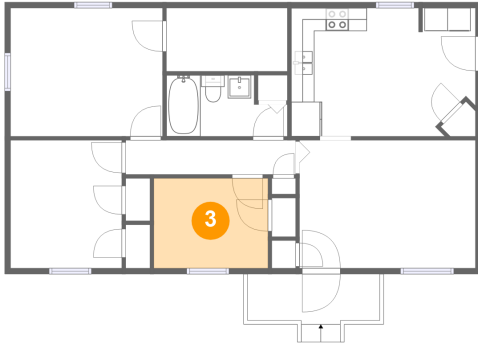
Max Dimensions: 13'1" x 11'1"
Calculated Area: 145 sq. ft
Included: Yes

Heated: Yes
Finished: Yes
Enclosed: Yes
Contiguous: Yes
Permitted: Yes
Wet space: No
Addition: No
Conversion: No

Home report

1130 Deep Woods Road, Hardy, Franklin County, Virginia, United States, 24101

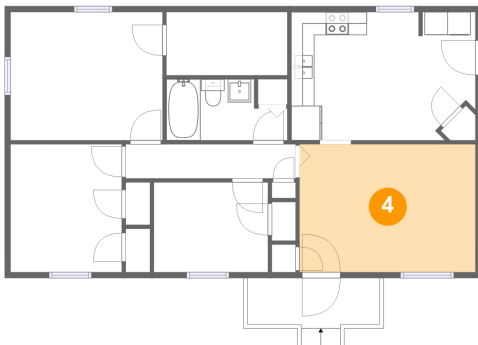
3 Floor 1 - Bedroom



Max Dimensions: 9'10" x 7'9"
Calculated Area: 76 sq. ft
Included: Yes

Heated: Yes
Finished: Yes
Enclosed: Yes
Contiguous: Yes
Permitted: Yes
Wet space: No
Addition: No
Conversion: No

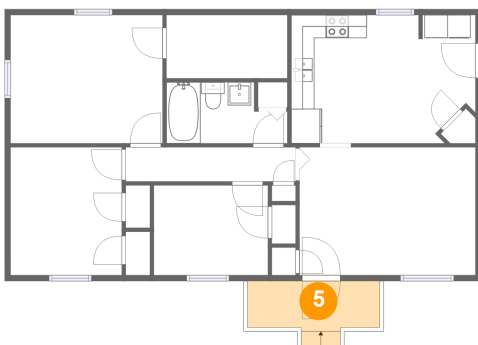
4 Floor 1 - Living Room



Max Dimensions: 15'2" x 11'0"
Calculated Area: 167 sq. ft
Included: Yes

Heated: Yes
Finished: Yes
Enclosed: Yes
Contiguous: Yes
Permitted: Yes
Wet space: No
Addition: No
Conversion: No

5 Floor 1 - Porch

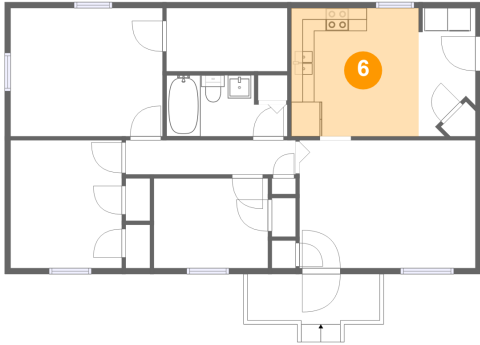


Max Dimensions: 11'5" x 4'4"
Calculated Area: 52 sq. ft
Included: No

Heated: No
Finished: Yes
Enclosed: No
Contiguous: Yes
Permitted: Yes
Wet space: No
Addition: No
Conversion: No

1130 Deep Woods Road, Hardy, Franklin County, Virginia, United States, 24101

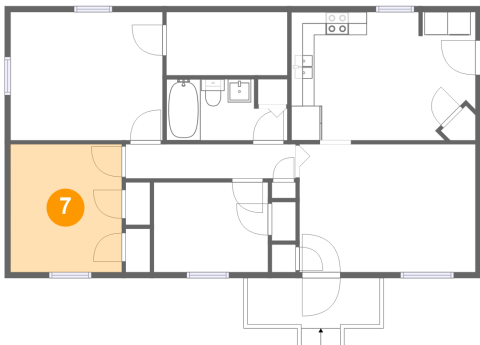
6 Floor 1 - Eat-in Kitchen



Max Dimensions: 11'0" x 11'1"
Calculated Area: 121 sq. ft
Included: Yes

Heated: Yes
Finished: Yes
Enclosed: Yes
Contiguous: Yes
Permitted: Yes
Wet space: No
Addition: No
Conversion: No

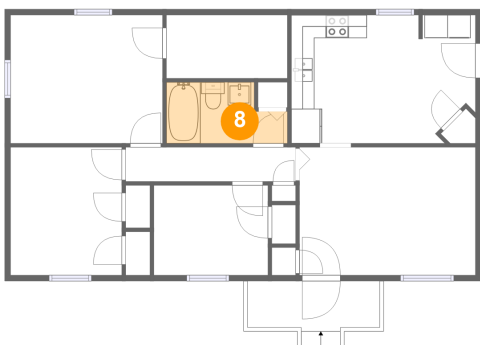
7 Floor 1 - Bedroom



Max Dimensions: 9'7" x 11'0"
Calculated Area: 106 sq. ft
Included: Yes

Heated: Yes
Finished: Yes
Enclosed: Yes
Contiguous: Yes
Permitted: Yes
Wet space: No
Addition: No
Conversion: No

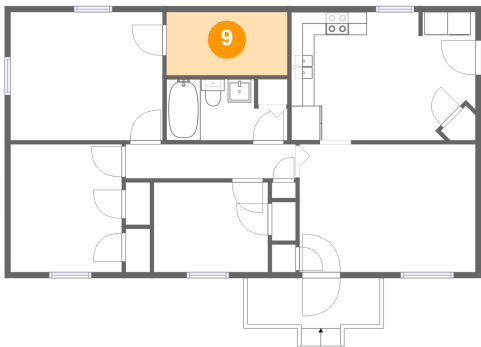
8 Floor 1 - Bath



Max Dimensions: 10'5" x 5'3"
Calculated Area: 48 sq. ft
Included: Yes

Heated: Yes
Finished: Yes
Enclosed: Yes
Contiguous: Yes
Permitted: Yes
Wet space: Yes
Addition: No
Conversion: No

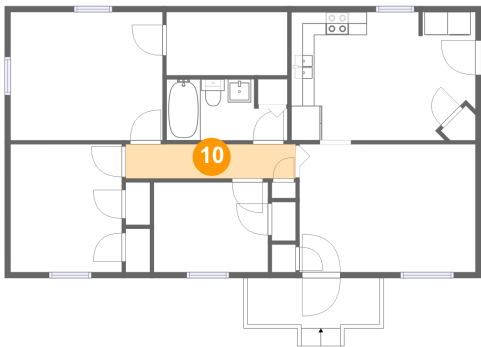
9 Floor 1 - W.I.C.



Max Dimensions: 10'5" x 5'5"
Calculated Area: 57 sq. ft
Included: Yes

Heated: Yes
Finished: Yes
Enclosed: Yes
Contiguous: Yes
Permitted: Yes
Wet space: No
Addition: No
Conversion: No

10 Floor 1 - Hall



Max Dimensions: 14'7" x 2'11"
Calculated Area: 43 sq. ft
Included: Yes

Heated: Yes
Finished: Yes
Enclosed: Yes
Contiguous: Yes
Permitted: Yes
Wet space: No
Addition: No
Conversion: No