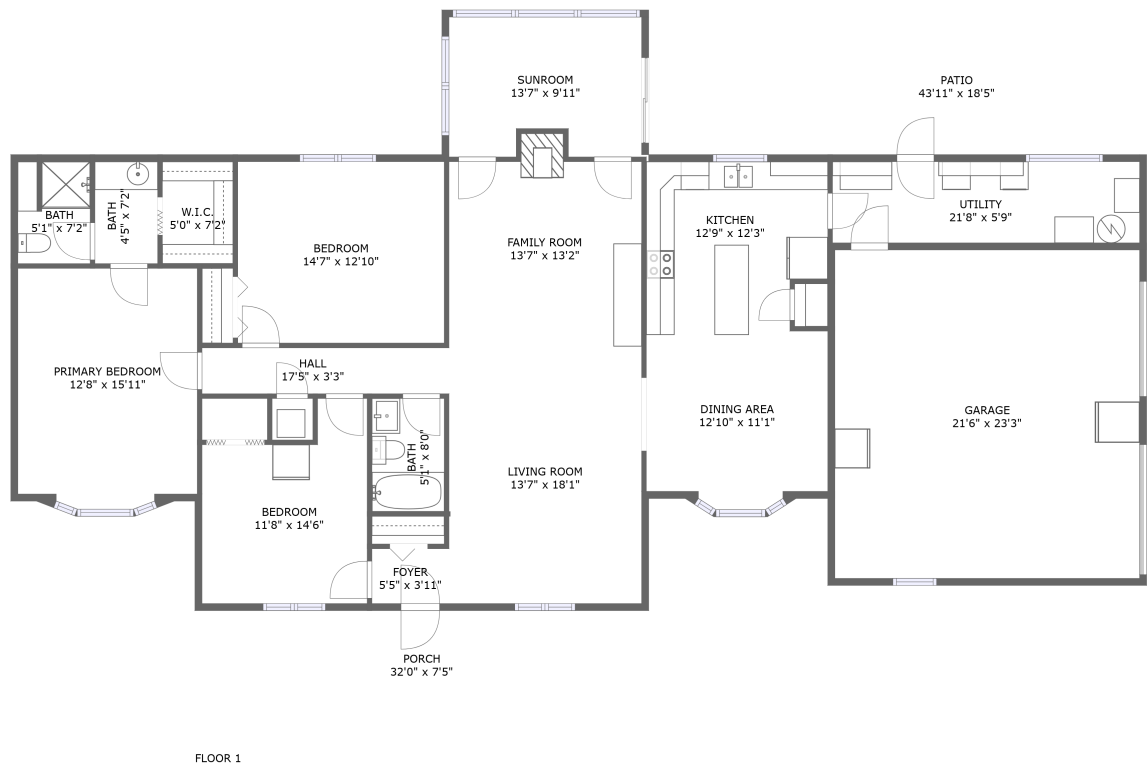
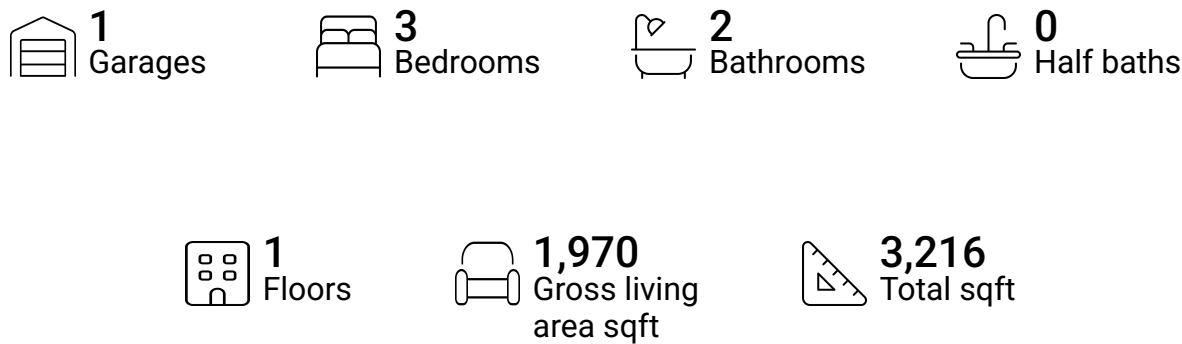


Home report

1033 Annie Bell Road,Blue Ridge,Virginia,United States

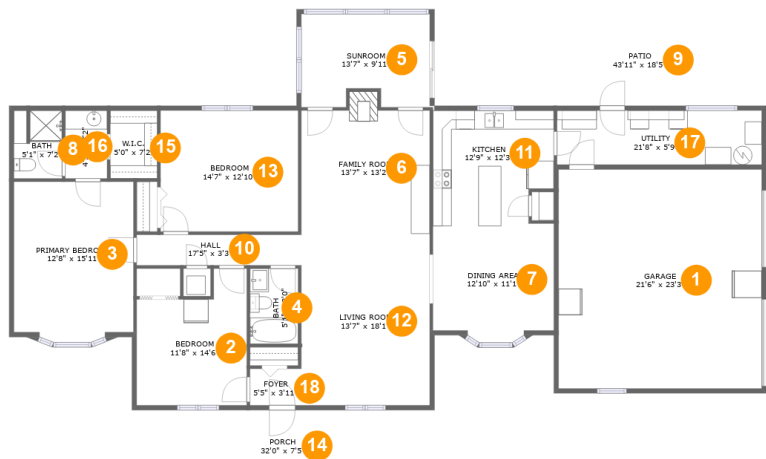


Property summary



Home report

1033 Annie Bell Road,Blue Ridge,Virginia,United States



Room dimensions

Floor 1

Total sqft: 3216 Living area: 1970

#		Dimensions	sqft	Counted as living area
1	Garage	21'6" x 23'3"	500 sq. ft	No
2	Bedroom	11'8" x 14'6"	143 sq. ft	Yes
3	Primary Bedroom	12'8" x 15'11"	202 sq. ft	Yes
4	Bath	5'1" x 8'0"	41 sq. ft	Yes
5	Sunroom	13'7" x 9'11"	127 sq. ft	Yes
6	Family Room	13'7" x 13'2"	185 sq. ft	Yes
7	Dining Area	12'10" x 11'1"	142 sq. ft	Yes
8	Bath	5'1" x 7'2"	36 sq. ft	Yes
9	Patio	43'11" x 18'5"	467 sq. ft	No
10	Hall	17'5" x 3'3"	57 sq. ft	Yes
11	Kitchen	12'9" x 12'3"	147 sq. ft	Yes

Home report

1033 Annie Bell Road,Blue Ridge,Virginia,United States

#		Dimensions	sqft	Counted as living area
12	Living Room	13'7" x 18'1"	246 sq. ft	Yes
13	Bedroom	14'7" x 12'10"	187 sq. ft	Yes
14	Porch	32'0" x 7'5"	238 sq. ft	No
15	W.I.C.	5'0" x 7'2"	36 sq. ft	Yes
16	Bath	4'5" x 7'2"	32 sq. ft	Yes
17	Utility	21'8" x 5'9"	125 sq. ft	Yes
18	Foyer	5'5" x 3'11"	21 sq. ft	Yes

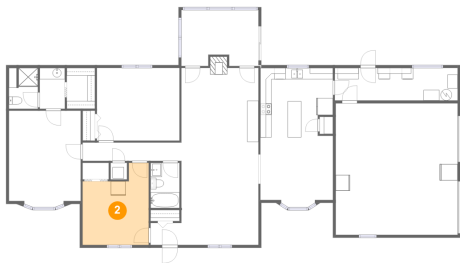
1 Floor 1 - Garage



Dimensions: 21'6" x 23'3"
Area: 500 sq. ft
Counted as living area: No

Heated: No
Finished: No
Enclosed: Yes
Contiguous: Yes
Permitted: Yes
Wet space: No
Addition: No
Conversion: No

2 Floor 1 - Bedroom



Dimensions: 11'8" x 14'6"
Area: 143 sq. ft
Counted as living area: Yes

Heated: Yes
Finished: Yes
Enclosed: Yes
Contiguous: Yes
Permitted: Yes
Wet space: No
Addition: No
Conversion: No

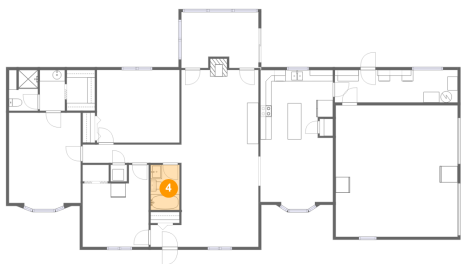
3 Floor 1 - Primary Bedroom



Dimensions: 12'8" x 15'11"
Area: 202 sq. ft
Counted as living area: Yes

Heated: Yes
Finished: Yes
Enclosed: Yes
Contiguous: Yes
Permitted: Yes
Wet space: No
Addition: No
Conversion: No

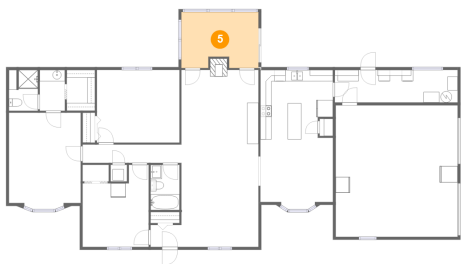
4 Floor 1 - Bath



Dimensions: 5'1" x 8'0"
Area: 41 sq. ft
Counted as living area: Yes

Heated: Yes
Finished: Yes
Enclosed: Yes
Contiguous: Yes
Permitted: Yes
Wet space: Yes
Addition: No
Conversion: No

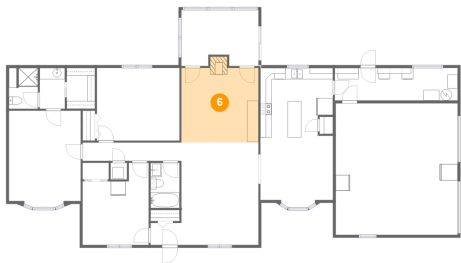
5 Floor 1 - Sunroom



Dimensions: 13'7" x 9'11"
Area: 127 sq. ft
Counted as living area: Yes

Heated: Yes
Finished: Yes
Enclosed: Yes
Contiguous: Yes
Permitted: Yes
Wet space: No
Addition: No
Conversion: No

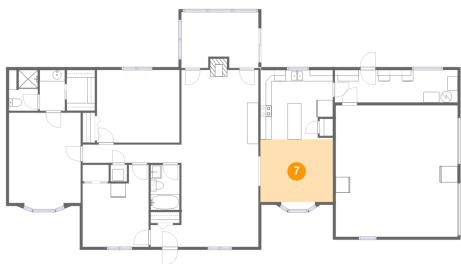
6 Floor 1 - Family Room



Dimensions: 13'7" x 13'2"
Area: 185 sq. ft
Counted as living area: Yes

Heated: Yes
Finished: Yes
Enclosed: Yes
Contiguous: Yes
Permitted: Yes
Wet space: No
Addition: No
Conversion: No

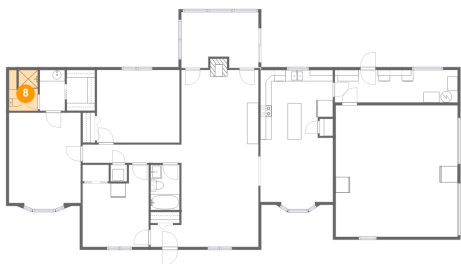
7 Floor 1 - Dining Area



Dimensions: 12'10" x 11'1"
Area: 142 sq. ft
Counted as living area: Yes

Heated: Yes
Finished: Yes
Enclosed: Yes
Contiguous: Yes
Permitted: Yes
Wet space: No
Addition: No
Conversion: No

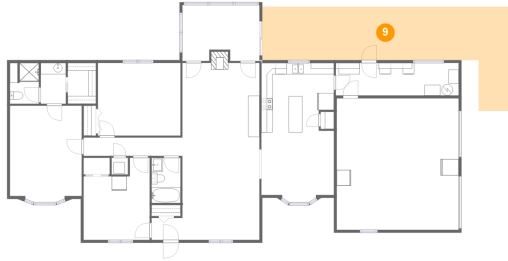
8 Floor 1 - Bath



Dimensions: 5'1" x 7'2"
Area: 36 sq. ft
Counted as living area: Yes

Heated: Yes
Finished: Yes
Enclosed: Yes
Contiguous: Yes
Permitted: Yes
Wet space: Yes
Addition: No
Conversion: No

9 Floor 1 - Patio



Dimensions: 43'11" x 18'5"
Area: 467 sq. ft
Counted as living area: No

Heated: No
Finished: Yes
Enclosed: No
Contiguous: Yes
Permitted: Yes
Wet space: No
Addition: No
Conversion: No

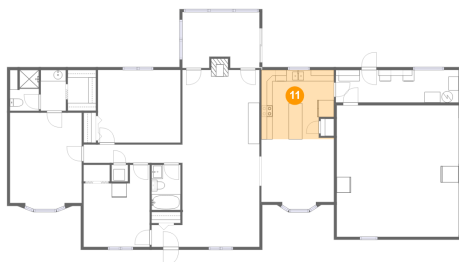
10 Floor 1 - Hall



Dimensions: 17'5" x 3'3"
Area: 57 sq. ft
Counted as living area: Yes

Heated: Yes
Finished: Yes
Enclosed: Yes
Contiguous: Yes
Permitted: Yes
Wet space: No
Addition: No
Conversion: No

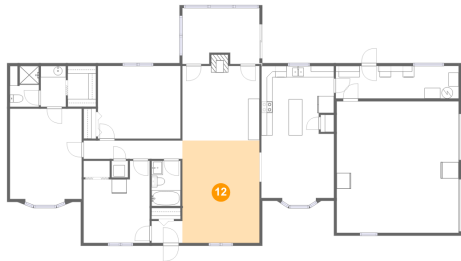
11 Floor 1 - Kitchen



Dimensions: 12'9" x 12'3"
Area: 147 sq. ft
Counted as living area: Yes

Heated: Yes
Finished: Yes
Enclosed: Yes
Contiguous: Yes
Permitted: Yes
Wet space: No
Addition: No
Conversion: No

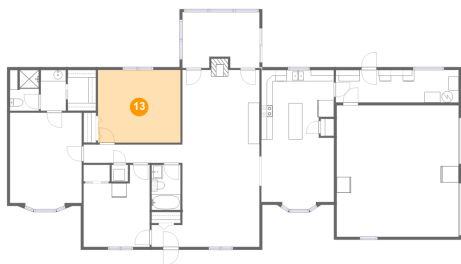
12 Floor 1 - Living Room



Dimensions: 13'7" x 18'1"
Area: 246 sq. ft
Counted as living area: Yes

Heated: Yes
Finished: Yes
Enclosed: Yes
Contiguous: Yes
Permitted: Yes
Wet space: No
Addition: No
Conversion: No

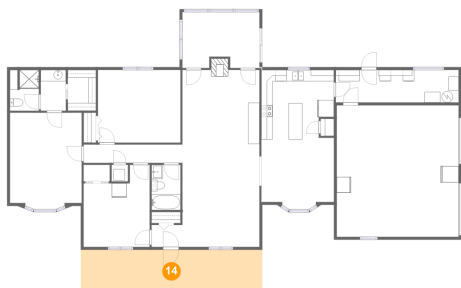
13 Floor 1 - Bedroom



Dimensions: 14'7" x 12'10"
Area: 187 sq. ft
Counted as living area: Yes

Heated: Yes
Finished: Yes
Enclosed: Yes
Contiguous: Yes
Permitted: Yes
Wet space: No
Addition: No
Conversion: No

14 Floor 1 - Porch



Dimensions: 32'0" x 7'5"
Area: 238 sq. ft
Counted as living area: No

Heated: No
Finished: Yes
Enclosed: No
Contiguous: Yes
Permitted: Yes
Wet space: No
Addition: No
Conversion: No

15 Floor 1 - W.I.C.



Dimensions: 5'0" x 7'2"
Area: 36 sq. ft
Counted as living area: Yes

Heated: Yes
Finished: Yes
Enclosed: Yes
Contiguous: Yes
Permitted: Yes
Wet space: No
Addition: No
Conversion: No

16 Floor 1 - Bath



Dimensions: 4'5" x 7'2"
Area: 32 sq. ft
Counted as living area: Yes

Heated: Yes
Finished: Yes
Enclosed: Yes
Contiguous: Yes
Permitted: Yes
Wet space: Yes
Addition: No
Conversion: No

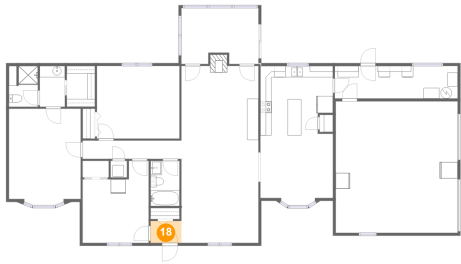
17 Floor 1 - Utility



Dimensions: 21'8" x 5'9"
Area: 125 sq. ft
Counted as living area: Yes

Heated: Yes
Finished: Yes
Enclosed: Yes
Contiguous: Yes
Permitted: Yes
Wet space: No
Addition: No
Conversion: No

18 Floor 1 - Foyer



Dimensions: 5'5" x 3'11"
Area: 21 sq. ft
Counted as living area: Yes

Heated: Yes
Finished: Yes
Enclosed: Yes
Contiguous: Yes
Permitted: Yes
Wet space: No
Addition: No
Conversion: No