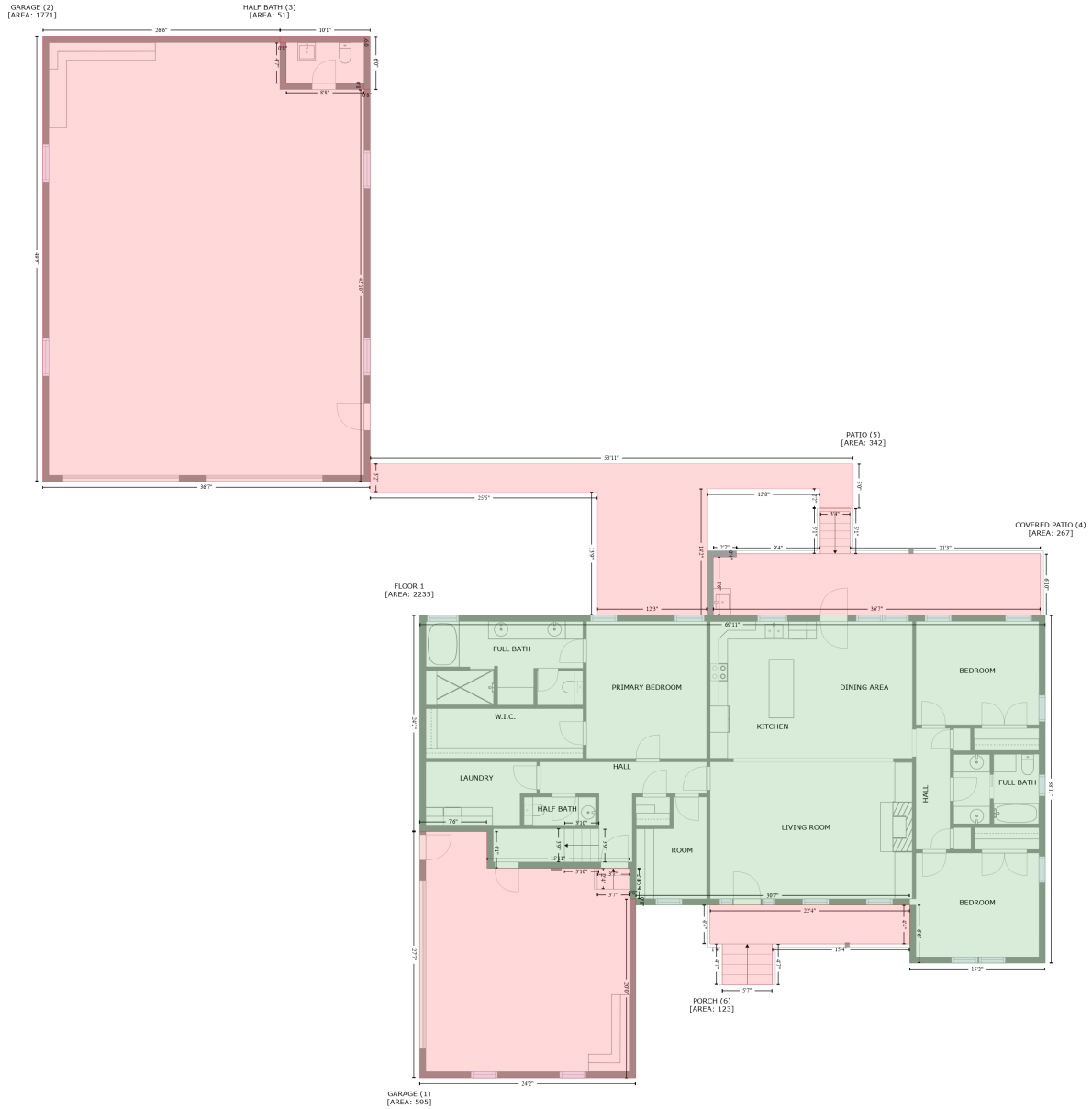


113 Lev Drive, Hazel Green, Madison County, Alabama, United States, 35750

Gross Living Area: 3431 sq. ft



| Space | Area (sq. ft) | Calculation |
|--------------------------|---------------|--|
| FLOOR 1 (Living area) | 2235 | Coordinate Polygon Area Algorithm using inches $-((1344.6 + 1344.6) * (780 - 1246.8) + (1344.6 + 1162.9) * (1246.8 - 1246.8) + (1162.9 + 1162.9) * (1246.8 - 1168.9) + (1162.9 + 795.7) * (1168.9 - 1168.9) + (795.7 + 795.7) * (1168.9 - 1160.5) + (795.7 + 787.3) * (1160.5 - 1160.5) + (787.3 + 787.3) * (1160.5 - 1119.5) + (787.3 + 596.1) * (1119.5 - 1119.5) + (596.1 + 596.1) * (1119.5 - 1070.2) + (596.1 + 505.8) * (1070.2 - 1070.2) + (505.8 + 505.8) * (1070.2 - 780) + (505.8 + 1344.6) * (780 - 780)) * 0.5 * 0.00694$ |
| GARAGE | 595 | $-((596.1 + 596.1) * (1070.2 - 1119.5) + (596.1 + 787.3) * (1119.5 - 1119.5) + (787.3 + 787.3) * (1119.5 - 1119.5)) * 0.5 * 0.00694$ |

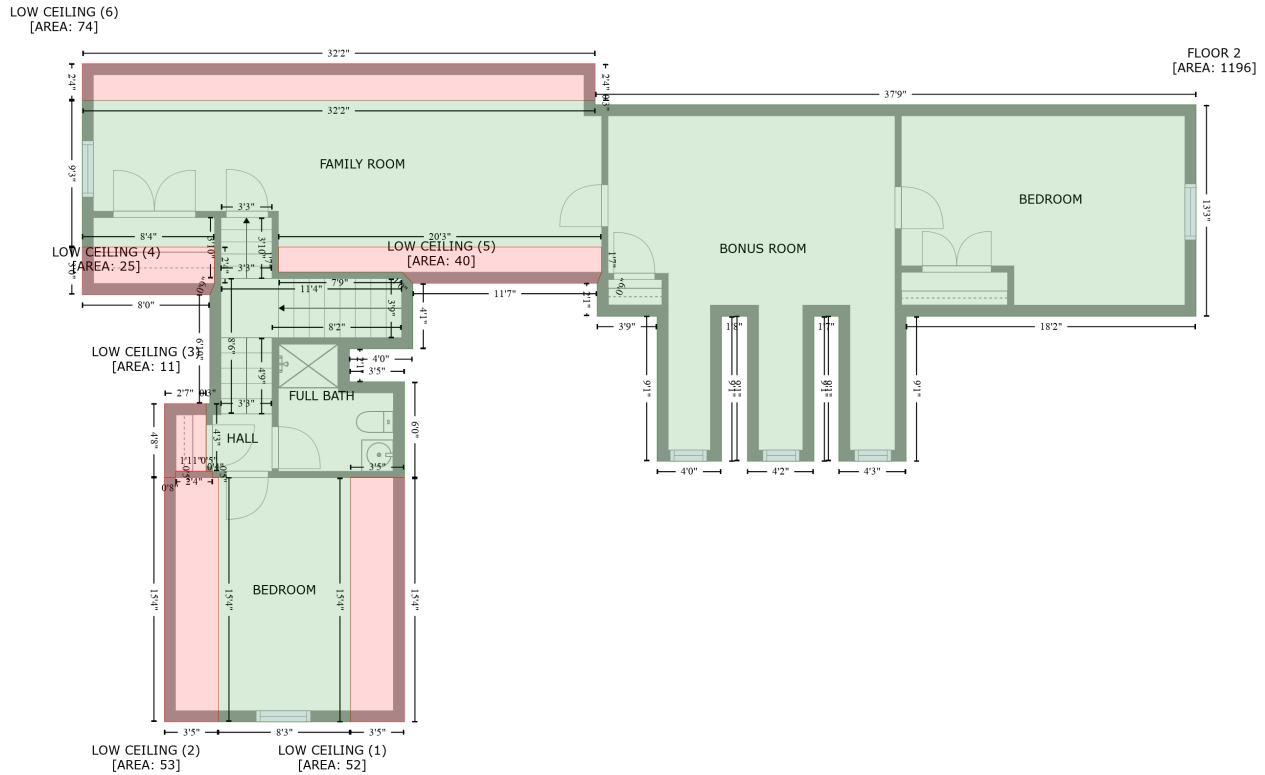
113 Lev Drive, Hazel Green, Madison County, Alabama, United States, 35750

Gross Living Area: 3431 sq. ft

| Space | Area (sq. ft) | Calculation <small>Coordinate Polygon Area Algorithm using inches</small> |
|------------------------------------|---------------|--|
| (Non-living area) | | $(1119.5 - 1160.5) + (787.3 + 795.7) * (1160.5 - 1160.5) + (795.7 + 795.7) * (1160.5 - 1400.8) + (795.7 + 505.8) * (1400.8 - 1400.8) + (505.8 + 505.8) * (1400.8 - 1070.2) + (505.8 + 596.1) * (1070.2 - 1070.2)) * 0.5 * 0.00694$ |
| GARAGE (Non-living area) | 1771 | $-((318.4 + 318.4) * (3.3 - 12.1) + (318.4 + 326.8) * (12.1 - 12.1) + (326.8 + 326.8) * (12.1 - 66.7) + (326.8 + 431.1) * (66.7 - 66.7) + (431.1 + 431.1) * (66.7 - 75.1) + (431.1 + 439.5) * (75.1 - 75.1) + (439.5 + 439.5) * (75.1 - 600.8) + (439.5 + 0.3) * (600.8 - 600.8) + (0.3 + 0.3) * (600.8 - 3.3) + (0.3 + 318.4) * (3.3 - 3.3)) * 0.5 * 0.00694$ |
| HALF BATH (Non-living area) | 51 | $-((439.5 + 439.5) * (3.3 - 75.1) + (439.5 + 431.1) * (75.1 - 75.1) + (431.1 + 431.1) * (75.1 - 66.7) + (431.1 + 326.8) * (66.7 - 66.7) + (326.8 + 326.8) * (66.7 - 12.1) + (326.8 + 318.4) * (12.1 - 12.1) + (318.4 + 318.4) * (12.1 - 3.3) + (318.4 + 439.5) * (3.3 - 3.3)) * 0.5 * 0.00694$ |
| COVERED PATIO (Non-living area) | 267 | $-((1082.9 + 1082.9) * (636.6 - 697.7) + (1082.9 + 1338.2) * (697.7 - 697.7) + (1338.2 + 1338.2) * (697.7 - 780) + (1338.2 + 899.5) * (780 - 780) + (899.5 + 899.5) * (780 - 702) + (899.5 + 930.6) * (702 - 702) + (930.6 + 930.6) * (702 - 697.7) + (930.6 + 1042.8) * (697.7 - 697.7) + (1042.8 + 1042.8) * (697.7 - 636.6) + (1042.8 + 1082.9) * (636.6 - 636.6)) * 0.5 * 0.00694$ |
| PATIO (Non-living area) | 342 | $-((1086.9 + 1086.9) * (576.8 - 636.6) + (1086.9 + 1042.8) * (636.6 - 636.6) + (1042.8 + 1042.8) * (636.6 - 610.3) + (1042.8 + 891.1) * (610.3 - 610.3) + (891.1 + 891.1) * (610.3 - 780) + (891.1 + 744.2) * (780 - 780) + (744.2 + 744.2) * (780 - 615) + (744.2 + 439.5) * (615 - 615) + (439.5 + 439.5) * (615 - 576.8) + (439.5 + 1086.9) * (576.8 - 576.8)) * 0.5 * 0.00694$ |
| PORCH (Non-living area) | 123 | $-((1162.9 + 1162.9) * (1168.9 - 1221.1) + (1162.9 + 978.8) * (1221.1 - 1221.1) + (978.8 + 978.8) * (1221.1 - 1275.7) + (978.8 + 911.4) * (1275.7 - 1275.7) + (911.4 + 911.4) * (1275.7 - 1221.1) + (911.4 + 895.1) * (1221.1 - 1221.1) + (895.1 + 895.1) * (1221.1 - 1168.9) + (895.1 + 1162.9) * (1168.9 - 1168.9)) * 0.5 * 0.00694$ |

113 Lev Drive, Hazel Green, Madison County, Alabama, United States, 35750

Gross Living Area: 3431 sq. ft



| Space | Area (sq. ft) | Calculation |
|----------------------------------|---------------|--|
| FLOOR 2 (Living area) | 1196 | $-(892 + 892) * (932.3 - 935.6) + (892 + 1344.6) * (935.6 - 935.6) + (1344.6 + 1344.6) * (935.6 - 1095) + (1344.6 + 1126.2) * (1095 - 1095) + (1126.2 + 1126.2) * (1095 - 1204.3) + (1126.2 + 1075.6) * (1204.3 - 1204.3) + (1075.6 + 1075.6) * (1204.3 - 1095) + (1075.6 + 1056.8) * (1095 - 1095) + (1056.8 + 1056.8) * (1095 - 1204.3) + (1056.8 + 1006.8) * (1204.3 - 1204.3) + (1006.8 + 1006.8) * (1204.3 - 1095) + (1006.8 + 987.2) * (1095 - 1095) + (987.2 + 987.2) * (1095 - 1204.3) + (987.2 + 938.7) * (1204.3 - 1204.3) + (938.7 + 938.7) * (1204.3 - 1095) + (938.7 + 893.6) * (1095 - 1095) + (893.6 + 893.6) * (1095 - 1070.2) + (893.6 + 896.9) * (1070.2 - 1061.8) + (896.9 + 896.9) * (1061.8 - 1042.9) + (896.9 + 653.5) * (1042.9 - 1042.9) + (653.5 + 653.5) * (1042.9 - 1061.8) + (653.5 + 746.4) * (1061.8 - 1061.8) + (746.4 + 754.7) * (1061.8 - 1070.2) + (754.7 + 754.7) * (1070.2 - 1119.5) + (754.7 + 707) * (1119.5 - 1119.5) + (707 + 707) * (1119.5 - 1144.4) + (707 + 748.4) * (1144.4 - 1144.4) + (748.4 + 748.4) * (1144.4 - 1216.7) + (748.4 + 707.7) * (1216.7 - 1216.7) + (707.7 + 707.7) * (1216.7 - 1400.8) + (707.7 + 608.4) * (1400.8 - 1400.8) + (608.4 + 608.4) * (1400.8 - 1216.7) + (608.4 + 603.9) * (1216.7 - 1216.7) + (603.9 + 603.9) * (1216.7 - 1211.9) + (603.9 + 599.1) * (1211.9 - 1211.9) + (599.1 + 599.1) * (1211.9 - 1160.9) + (599.1 + 601.8) * (1160.9 - 1160.9) + (601.8 + 601.8) * (1160.9 - 1078.8) + (601.8 + 605.4) * (1078.8 - 1070.5) + (605.4 + 605.4) * (1070.5 - 1042.9) + (605.4 + 505.8) * (1042.9 - 1042.9) + (505.8 + 505.8) * (1042.9 - 932.3) + (505.8 + 892) * (932.3 - 932.3) * 0.5 * 0.00694$ |
| LOW CEILING (Non-living area) | 52 | $-(748.4 + 748.4) * (1216.7 - 1400.8) + (748.4 + 707.7) * (1400.8 - 1400.8) + (707.7 + 707.7) * (1400.8 - 1216.7) + (707.7 + 748.4) * (1216.7 - 1216.7) * 0.5 * 0.00694$ |
| LOW CEILING (Non-living area) | 53 | $-(603.9 + 603.9) * (1211.9 - 1216.7) + (603.9 + 608.4) * (1216.7 - 1216.7) + (608.4 + 608.4) * (1216.7 - 1400.8) + (608.4 + 567.6) * (1400.8 - 1400.8) + (567.6 + 567.6) * (1400.8 - 1216.7) + (567.6 + 576) * (1216.7 - 1216.7) + (576 + 576) * (1216.7 - 1211.9) + (576 + 603.9) * (1211.9 - 1211.9) * 0.5 * 0.00694$ |

113 Lev Drive, Hazel Green, Madison County, Alabama, United States, 35750

Gross Living Area: 3431 sq. ft

| Space | Area (sq. ft) | Calculation <small>Coordinate Polygon Area Algorithm using inches</small> |
|----------------------------------|---------------|---|
| LOW CEILING (Non-living area) | 11 | $-\left((599.1 + 599.1) * (1160.9 - 1211.9) + (599.1 + 576) * (1211.9 - 1211.9) + (576 + 576) * (1211.9 - 1216.7) + (576 + 567.6) * (1216.7 - 1216.7) + (567.6 + 567.6) * (1216.7 - 1160.9) + (567.6 + 599.1) * (1160.9 - 1160.9)\right) * 0.5 * 0.00694$ |
| LOW CEILING (Non-living area) | 25 | $-\left((605.4 + 605.4) * (1042.9 - 1070.5) + (605.4 + 601.8) * (1070.5 - 1078.8) + (601.8 + 505.8) * (1078.8 - 1078.8) + (505.8 + 505.8) * (1078.8 - 1042.9) + (505.8 + 605.4) * (1042.9 - 1042.9)\right) * 0.5 * 0.00694$ |
| LOW CEILING (Non-living area) | 40 | $-\left((896.9 + 896.9) * (1042.9 - 1061.8) + (896.9 + 893.6) * (1061.8 - 1070.2) + (893.6 + 754.7) * (1070.2 - 1070.2) + (754.7 + 746.4) * (1070.2 - 1061.8) + (746.4 + 653.5) * (1061.8 - 1061.8) + (653.5 + 653.5) * (1061.8 - 1042.9) + (653.5 + 896.9) * (1042.9 - 1042.9)\right) * 0.5 * 0.00694$ |
| LOW CEILING (Non-living area) | 74 | $-\left((892 + 892) * (904.7 - 932.3) + (892 + 505.8) * (932.3 - 932.3) + (505.8 + 505.8) * (932.3 - 904.7) + (505.8 + 892) * (904.7 - 904.7)\right) * 0.5 * 0.00694$ |