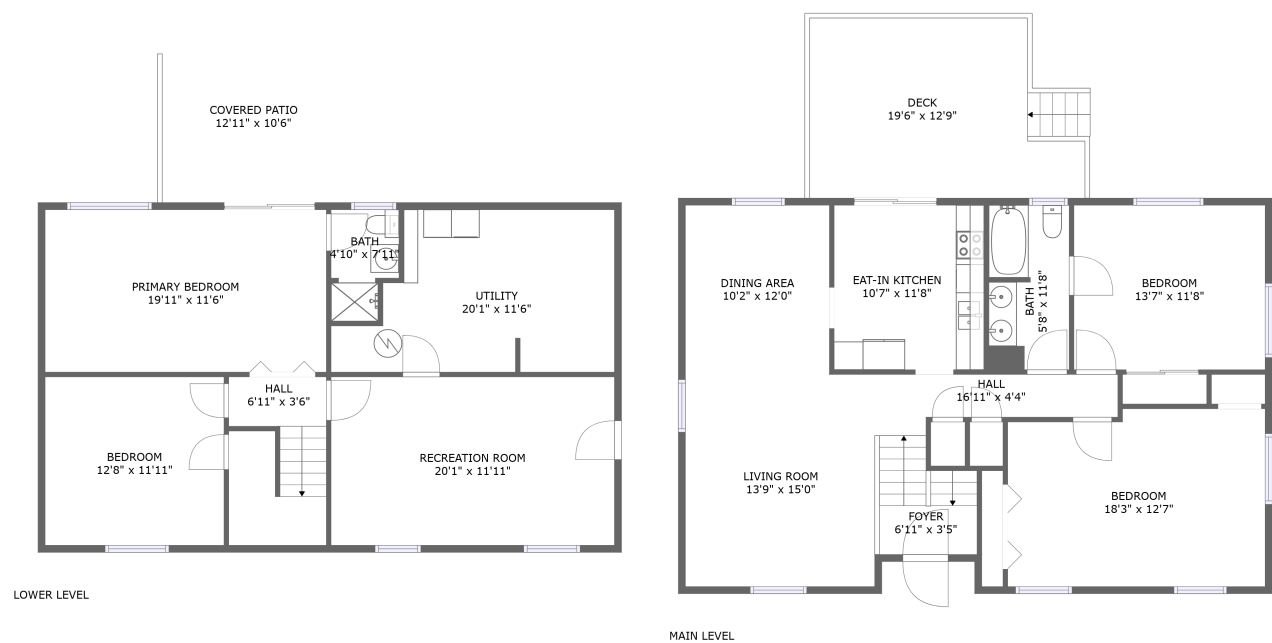


Home report

3920 Kentland Drive, Wyndale, Cave Spring, Roanoke, Roanoke County, Virginia, United States, 24018



Total Area: 1859 sq. ft
Floor 1: 766 sq. ft, Floor 2: 1093 sq. ft
Excluded: Utility 193 sq. ft, Covered patio 137 sq. ft, Deck 214 sq. ft, Walls: 137 sq. ft

Property summary

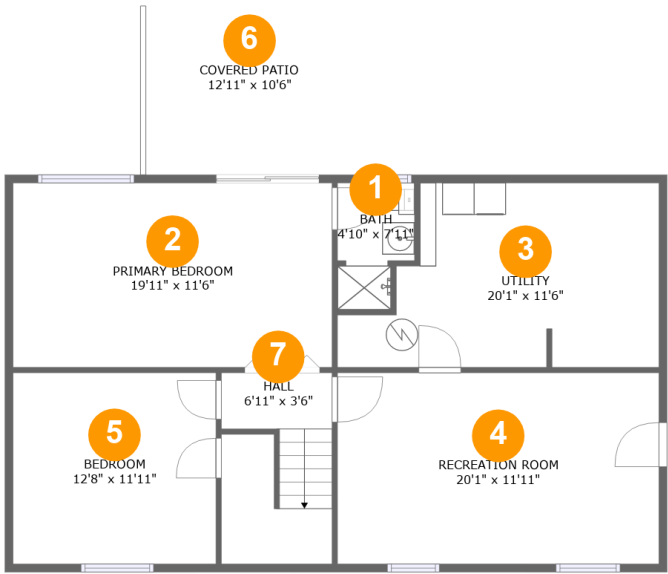
 **2** Floors

 **4** Bedrooms

 **2** Bathrooms

Home report

3920 Kentland Drive, Wyndale, Cave Spring, Roanoke, Roanoke County, Virginia, United States, 24018



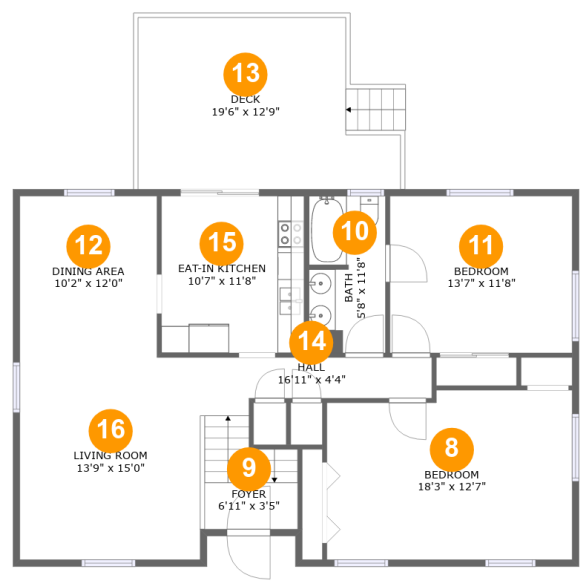
Room dimensions

Floor 1 Total:766sqft Excluded: 330sqft

#		Max Dimensions	sqft	Included
1	Bath	4'10" x 7'11"	33 sq. ft	Yes
2	Primary Bedroom	19'11" x 11'6"	229 sq. ft	Yes
3	Utility	20'1" x 11'6"	192 sq. ft	No
4	Recreation Room	20'1" x 11'11"	240 sq. ft	Yes
5	Bedroom	12'8" x 11'11"	151 sq. ft	Yes
6	Covered Patio	12'11" x 10'6"	137 sq. ft	No
7	Hall	6'11" x 3'6"	80 sq. ft	Yes

Home report

3920 Kentland Drive, Wyndale, Cave Spring, Roanoke, Roanoke County, Virginia, United States, 24018



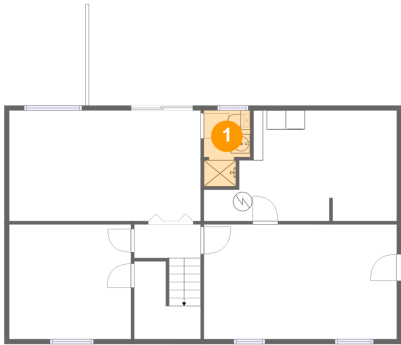
Room dimensions

Floor 2 Total:1093sqft Excluded: 214sqft

#		Max Dimensions	sqft	Included
8	Bedroom	18'3" x 12'7"	222 sq. ft	Yes
9	Foyer	6'11" x 3'5"	49 sq. ft	Yes
10	Bath	5'8" x 11'8"	66 sq. ft	Yes
11	Bedroom	13'7" x 11'8"	158 sq. ft	Yes
12	Dining Area	10'2" x 12'0"	122 sq. ft	Yes
13	Deck	19'6" x 12'9"	214 sq. ft	No
14	Hall	16'11" x 4'4"	55 sq. ft	Yes
15	Eat-in Kitchen	10'7" x 11'8"	124 sq. ft	Yes
16	Living Room	13'9" x 15'0"	206 sq. ft	Yes

3920 Kentland Drive, Wyndale, Cave Spring, Roanoke, Roanoke County, Virginia, United States, 24018

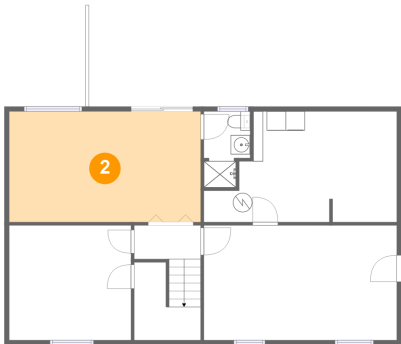
1 Floor 1 - Bath



Max Dimensions: 4'10" x 7'11"
Calculated Area: 33 sq. ft
Included: Yes

Heated: Yes
Finished: Yes
Enclosed: Yes
Contiguous: Yes
Permitted: Yes
Wet space: Yes
Addition: No
Conversion: No

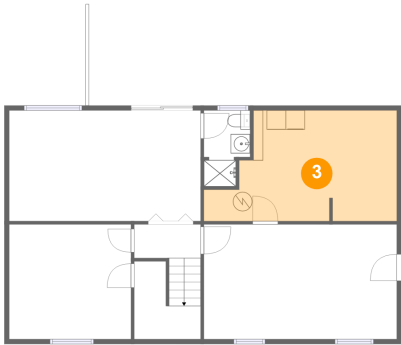
2 Floor 1 - Primary Bedroom



Max Dimensions: 19'11" x 11'6"
Calculated Area: 229 sq. ft
Included: Yes

Heated: Yes
Finished: Yes
Enclosed: Yes
Contiguous: Yes
Permitted: Yes
Wet space: No
Addition: No
Conversion: No

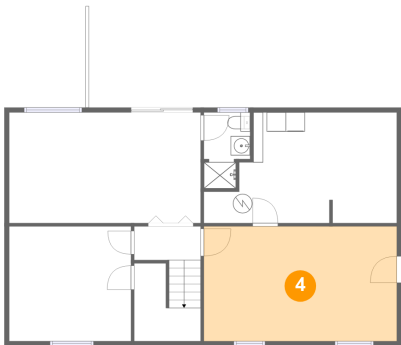
3 Floor 1 - Utility



Max Dimensions: 20'1" x 11'6"
Calculated Area: 192 sq. ft
Included: No

Heated: Yes
Finished: No
Enclosed: Yes
Contiguous: Yes
Permitted: Yes
Wet space: No
Addition: No
Conversion: No

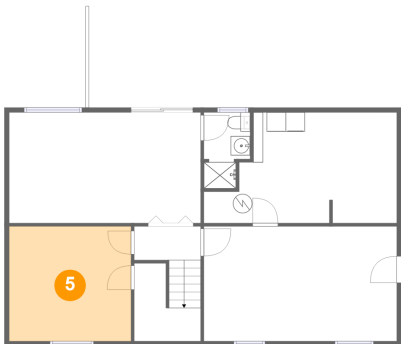
4 Floor 1 - Recreation Room



Max Dimensions: 20'1" x 11'11"
Calculated Area: 240 sq. ft
Included: Yes

Heated: Yes
Finished: Yes
Enclosed: Yes
Contiguous: Yes
Permitted: Yes
Wet space: No
Addition: No
Conversion: No

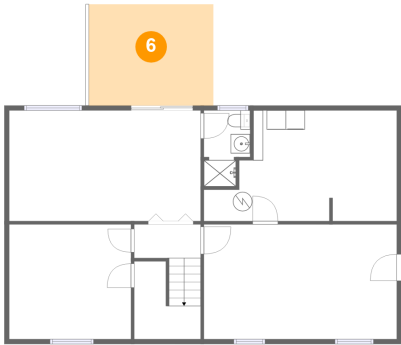
5 Floor 1 - Bedroom



Max Dimensions: 12'8" x 11'11"
Calculated Area: 151 sq. ft
Included: Yes

Heated: Yes
Finished: Yes
Enclosed: Yes
Contiguous: Yes
Permitted: Yes
Wet space: No
Addition: No
Conversion: No

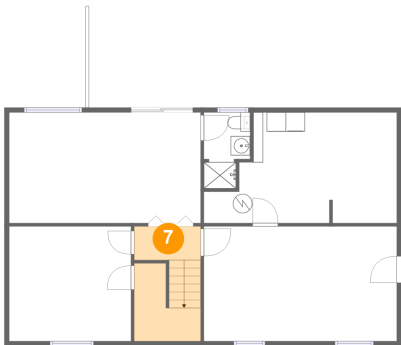
6 Floor 1 - Covered Patio



Max Dimensions: 12'11" x 10'6"
Calculated Area: 137 sq. ft
Included: No

Heated: No
Finished: Yes
Enclosed: No
Contiguous: Yes
Permitted: Yes
Wet space: No
Addition: No
Conversion: No

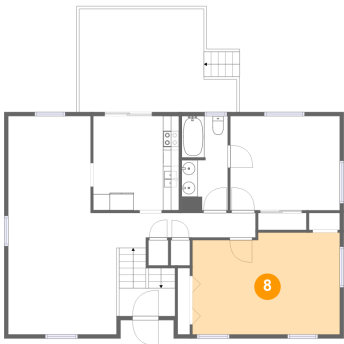
7 Floor 1 - Hall



Max Dimensions: 6'11" x 3'6"
Calculated Area: 80 sq. ft
Included: Yes

Heated: Yes
Finished: Yes
Enclosed: Yes
Contiguous: Yes
Permitted: Yes
Wet space: No
Addition: No
Conversion: No

8 Floor 2 - Bedroom



Max Dimensions: 18'3" x 12'7"
Calculated Area: 222 sq. ft
Included: Yes

Heated: Yes
Finished: Yes
Enclosed: Yes
Contiguous: Yes
Permitted: Yes
Wet space: No
Addition: No
Conversion: No

9 Floor 2 - Foyer



Max Dimensions: 6'11" x 3'5"
Calculated Area: 49 sq. ft
Included: Yes

Heated: Yes
Finished: Yes
Enclosed: Yes
Contiguous: Yes
Permitted: Yes
Wet space: No
Addition: No
Conversion: No

10 Floor 2 - Bath



Max Dimensions: 5'8" x 11'8"
Calculated Area: 66 sq. ft
Included: Yes

Heated: Yes
Finished: Yes
Enclosed: Yes
Contiguous: Yes
Permitted: Yes
Wet space: Yes
Addition: No
Conversion: No

11 Floor 2 - Bedroom



Max Dimensions: 13'7" x 11'8"
Calculated Area: 158 sq. ft
Included: Yes

Heated: Yes
Finished: Yes
Enclosed: Yes
Contiguous: Yes
Permitted: Yes
Wet space: No
Addition: No
Conversion: No

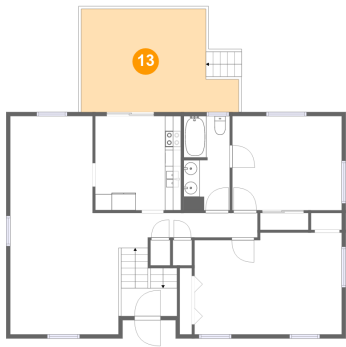
12 Floor 2 - Dining Area



Max Dimensions: 10'2" x 12'0"
Calculated Area: 122 sq. ft
Included: Yes

Heated: Yes
Finished: Yes
Enclosed: Yes
Contiguous: Yes
Permitted: Yes
Wet space: No
Addition: No
Conversion: No

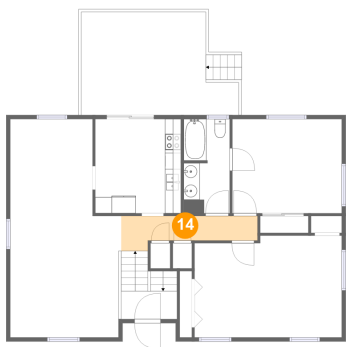
13 Floor 2 - Deck



Max Dimensions: 19'6" x 12'9"
Calculated Area: 214 sq. ft
Included: No

Heated: No
Finished: Yes
Enclosed: No
Contiguous: Yes
Permitted: Yes
Wet space: No
Addition: No
Conversion: No

14 Floor 2 - Hall



Max Dimensions: 16'11" x 4'4"
Calculated Area: 55 sq. ft
Included: Yes

Heated: Yes
Finished: Yes
Enclosed: Yes
Contiguous: Yes
Permitted: Yes
Wet space: No
Addition: No
Conversion: No

15 Floor 2 - Eat-in Kitchen



Max Dimensions: 10'7" x 11'8"
Calculated Area: 124 sq. ft
Included: Yes

Heated: Yes
Finished: Yes
Enclosed: Yes
Contiguous: Yes
Permitted: Yes
Wet space: No
Addition: No
Conversion: No

16 Floor 2 - Living Room



Max Dimensions: 13'9" x 15'0"
Calculated Area: 206 sq. ft
Included: Yes

Heated: Yes
Finished: Yes
Enclosed: Yes
Contiguous: Yes
Permitted: Yes
Wet space: No
Addition: No
Conversion: No